

Airport Noise Advisory Panel (ANAP)

4th Quarter Meeting December 8, 2011



Reno-Tahoe
Airport Authority

And
up we
go.

Scheduled Daily Passenger Airlines Departures *

2011 - Reno-Tahoe International Airport (RNO)

- **July – (71 non-stop departures)**
 - Delta Airlines added one (1) non-stop to Minneapolis St. Paul, MN
- **August – (71 non-stop departures)**
 - There were no changes in the month of August
- **September – (67 non-stop departures)**
 - Alaska discontinued one (1) non-stop to Seattle, WA
 - Southwest discontinued one (1) non-stop to Las Vegas, NV
 - United discontinued
 - One (1) non-stop to Denver, CO
 - One (1) non-stop to Los Angeles, CA
- **October – (61 non-stop departures)**
 - American discontinued one (1) non-stop to Dallas, TX
 - Continental discontinued their non-stop service (1) to Houston, TX**
 - Delta discontinued one (1) non-stop to Salt Lake City, UT
 - Southwest discontinued one (1) non-stop to Seattle, WA
 - United discontinued one (1) non-stop to Denver, CO
 - US Airways discontinued one (1) non-stop to Phoenix, AZ

* Not all flights operate seven days a week.

** Scheduled to resume on December 15, 2011

*** Majority of decreases are seasonal and expected to return

Scheduled Daily Passenger Airlines Departures *

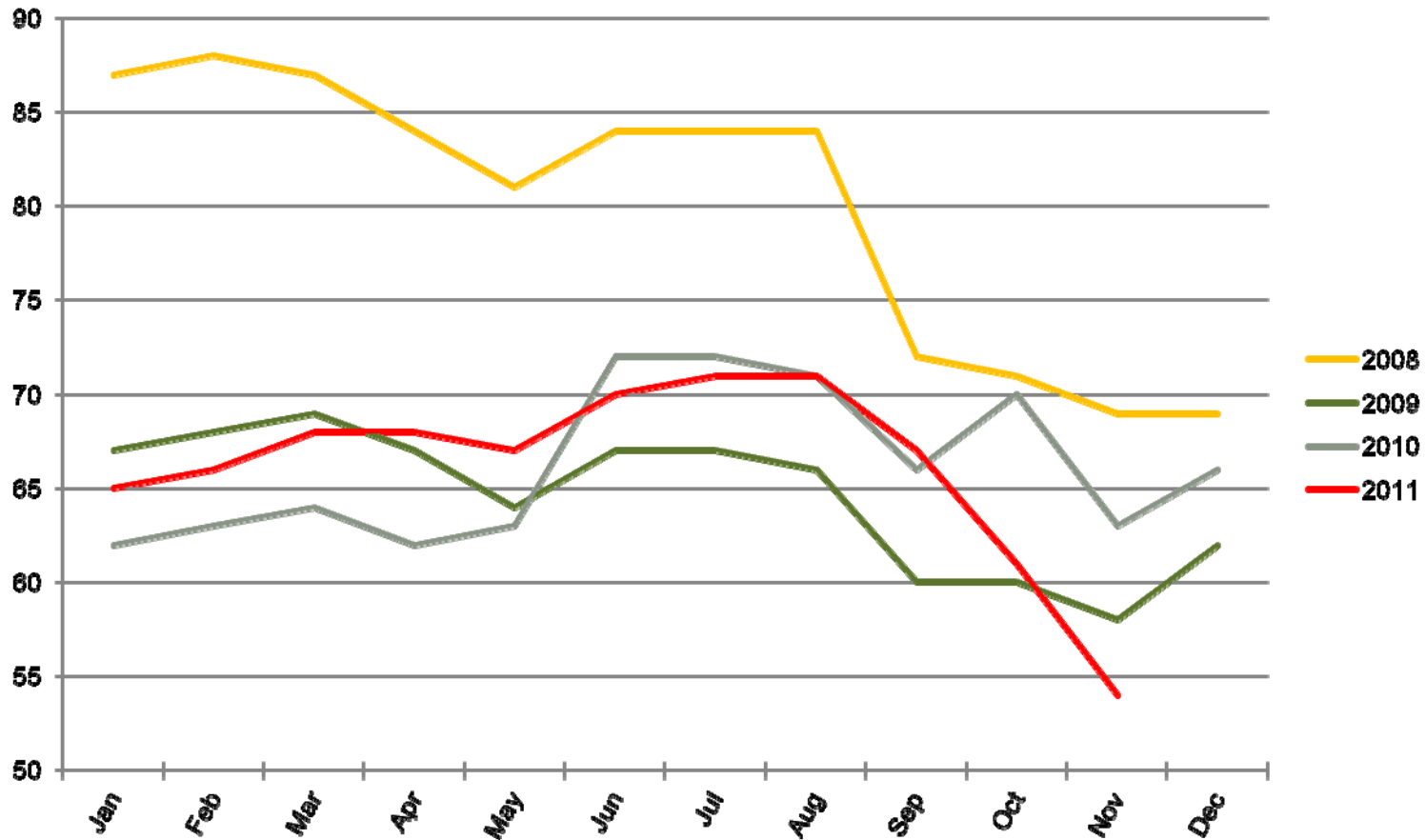
2011 - Reno-Tahoe International Airport (RNO) - Continued

- **November – (54 non-stop departures)**
 - **Southwest discontinued**
 - One (1) non-stop to Denver, CO
 - One (1) non-stop to Los Angeles, CA
 - One (1) non-stop to Oakland, CA
 - One (1) non-stop to Phoenix, AZ
 - One (1) non-stop to Portland, OR
 - One (1) non-stop to San Jose, CA
 - **United discontinued**
 - One (1) non-stop to Los Angeles, CA
 - One (1) non-stop to San Francisco, CA
 - **US Airways added one (1) non-stop to Phoenix, AZ**

* Not all flights operate seven days a week.

*** Majority of decreases are seasonal and expected to return

Scheduled Daily Passenger Airline Departures* Annual Trends 2011 - Reno-Tahoe International Airport (RNO)



*Not all flights operate seven days a week.



Reno-Tahoe
Airport Authority

And
up we
go.

Scheduled Cargo Flight Operations*

July - September 2011

	FEDEX (A310 and B757)	UPS (757)	Ameriflight (Chieftain, Navajo, Lear35A)
SCHEDULE			
12 am – 3 am			
3 am – 5 am	1A (B757) 1D (B757)	2A	
5 am – 7 am	1A (B757)	1A, 2D	1A (Chief.) 1A (Lear)
7 am – 9 am	1D (B757)		1D (Chief.)
9 am – 12 pm			1A (Navajo)
12 pm – 3 pm			1D (Navajo)
3 pm – 5 pm	1A (B757)		
5 pm – 8 pm	1A (A300), 1D (A300)	1A, 2D	1A (Chief.) 1A (Navajo) 3D (Chief, Navajo, Lear)
8 pm – 10 pm	1D (757)		
10 pm – 12 am			

*Not all flights operate seven days a week.



**Reno-Tahoe
Airport Authority**

And
up we
go.

Aircraft Runway Use

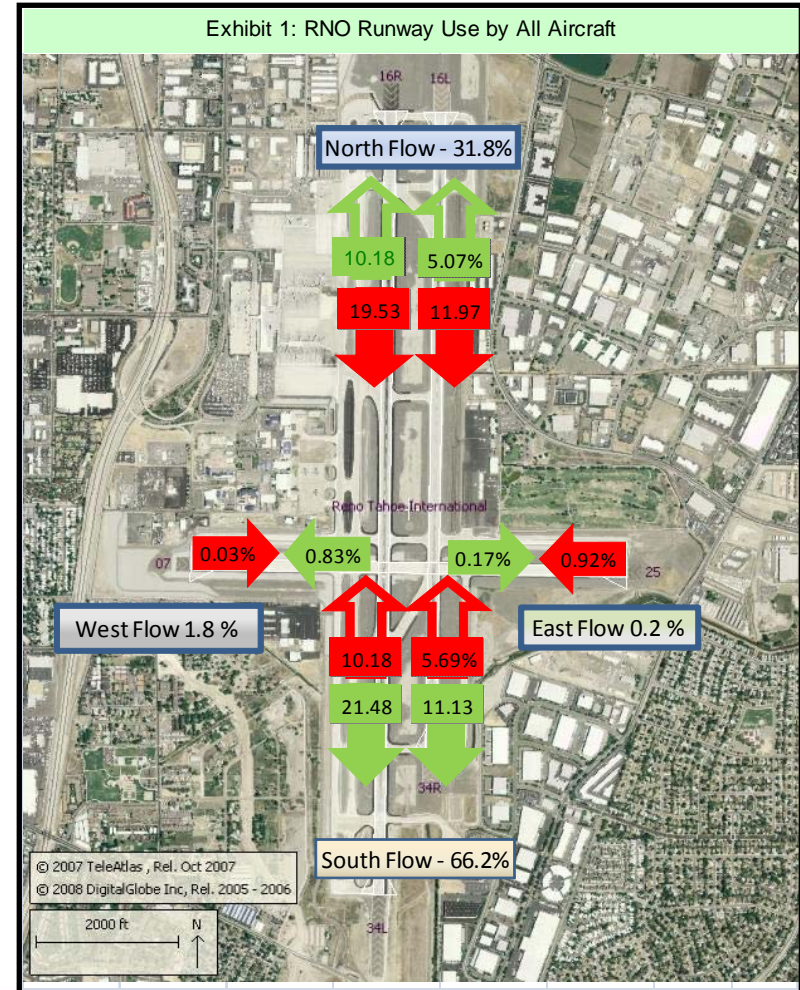
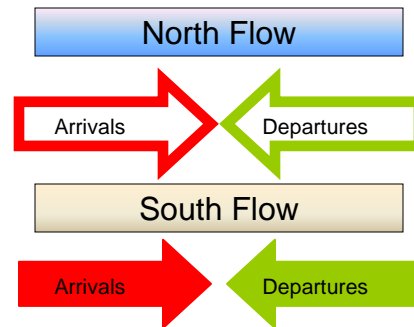
July – September 2011

Table 1: RNO Runway Use by All Aircraft

Runway	Operation Type	% of Operations
North Flow		
34L	Arrival	10.18%
34L	Departure	10.18%
34L	Touch & Go	0.27%
34R	Arrival	5.69%
34R	Departure	5.07%
34R	Touch & Go	0.45%
South Flow		
16L	Arrival	11.97%
16L	Departure	11.13%
16L	Touch & Go	1.56%
16R	Arrival	19.53%
16R	Departure	21.48%
16R	Touch & Go	0.48%
East Flow		
7	Arrival	0.03%
7	Departure	0.17%
7	Touch & Go	0.00%
West Flow		
25	Arrival	0.92%
25	Departure	0.83%
25	Touch & Go	0.05%

Table 2: RNO Runway Use by All Aircraft

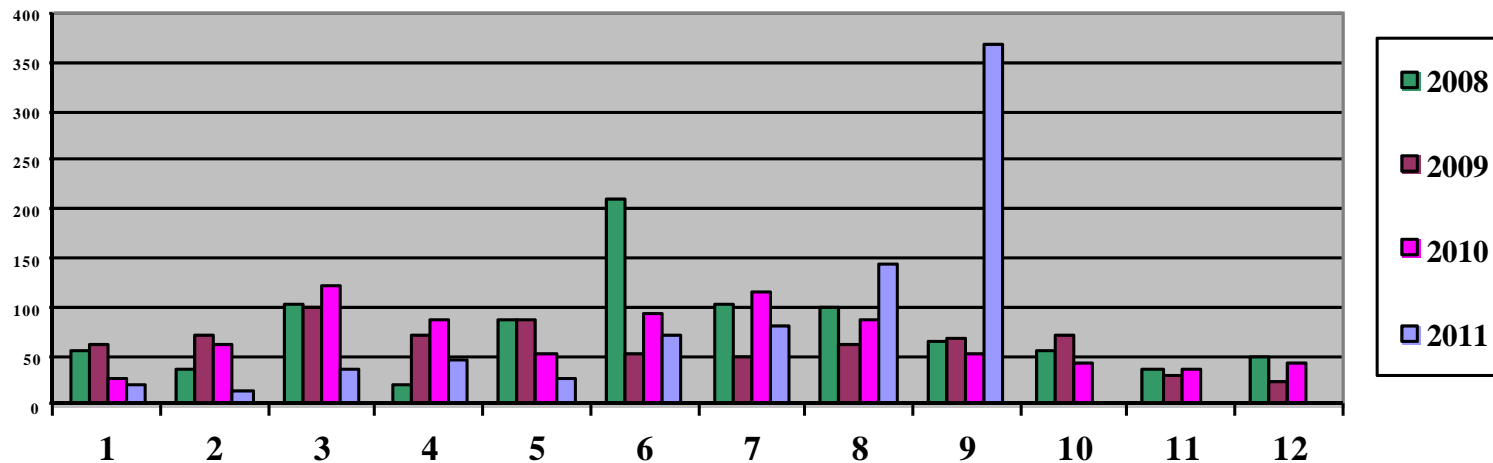
North Flow	Runway 34L & 34R All Ops	31.8%
South Flow	Runway 16L & 16R All Ops	66.2%
East Flow	Runway 7 All Ops	0.2%
West Flow	Runway 25 All Ops	1.8%



Noise Complaints 2008 – 2011

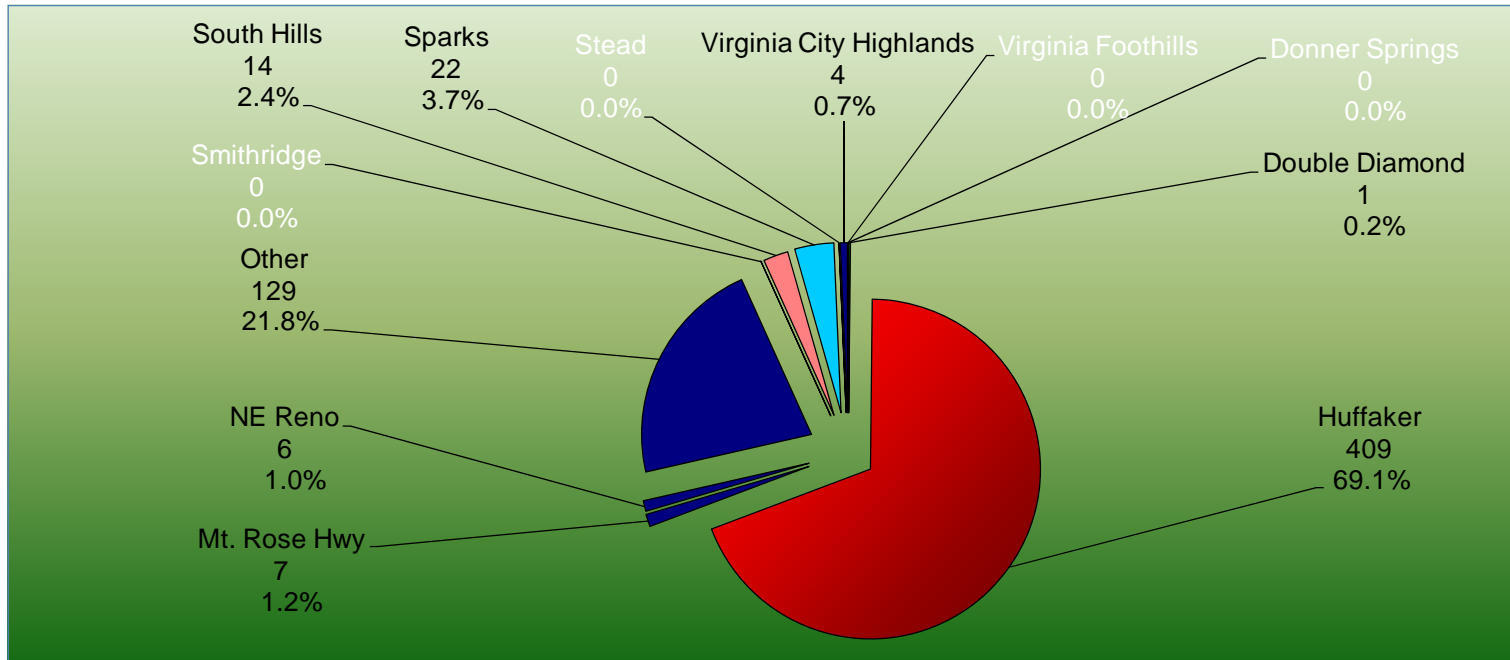
3rd Quarter 2011 July - September

	Jan	Feb	Mar	April	May	June	July	Aug	Sept	Oct	Nov	Dec	Total
2008	56	37	104	22	88	209	104	100	64	55	35	49	923
2009	63	70	98	71	86	52	49	60	67	72	29	24	741
2010	26	62	122	88	52	93	115	86	52	44	35	41	816
2011	20	15	35	45	27	72	81	144	367				806



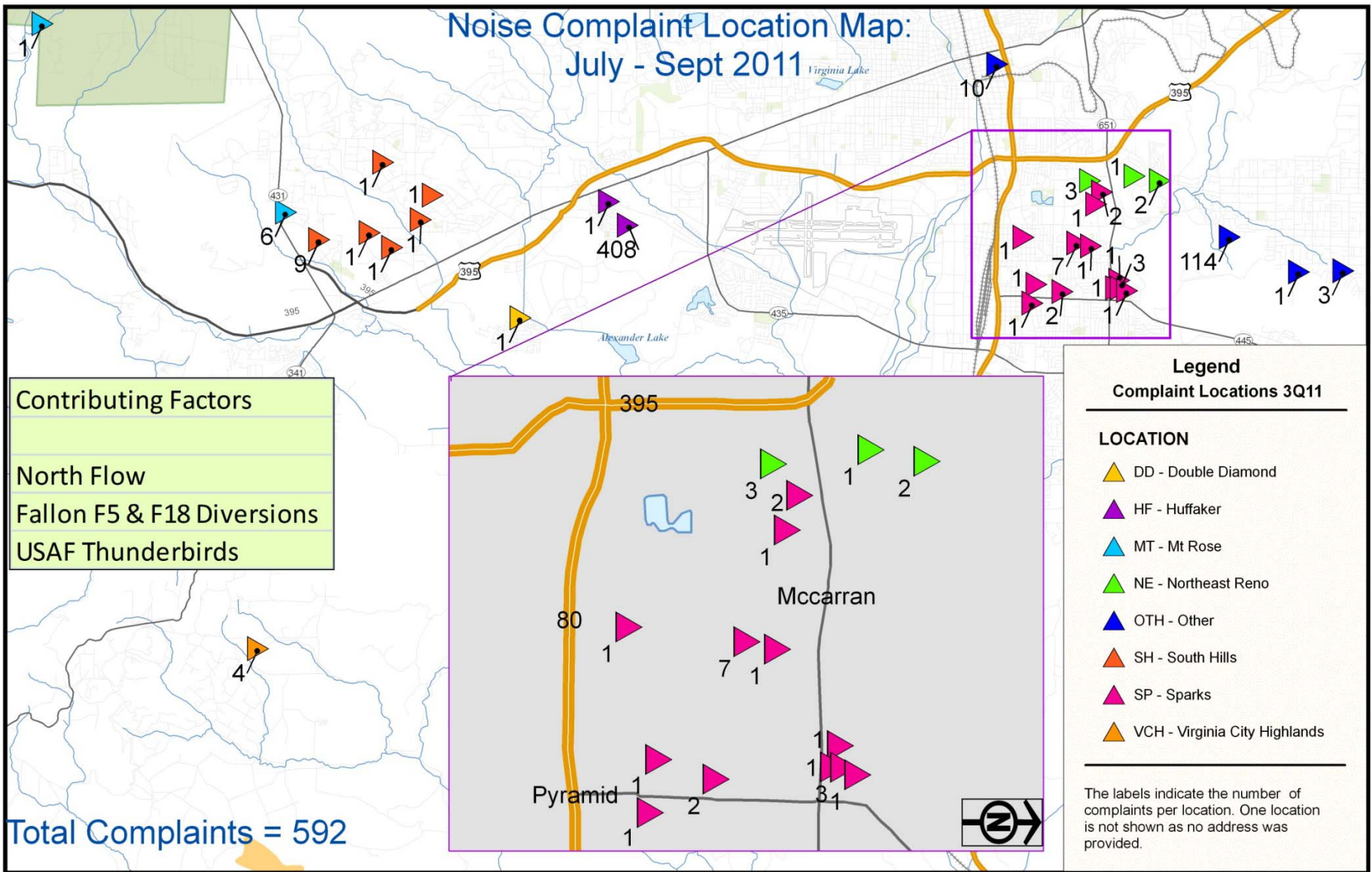
Total Complaints = 592

Noise Complaints by Location July - September 2011



Total 3rd Quarter 2011 Complaints = 592

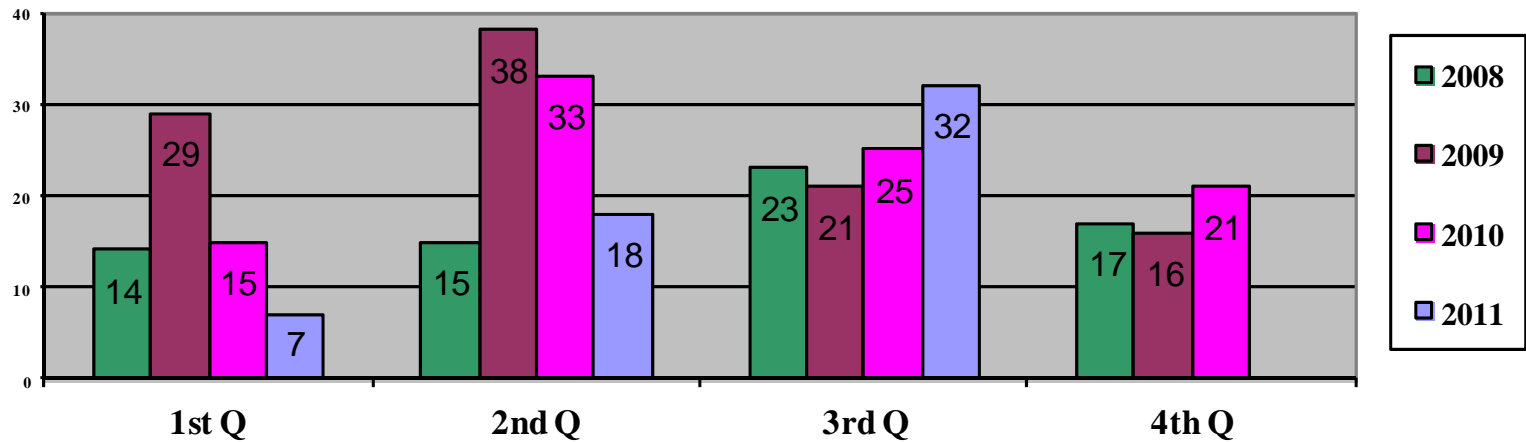
Noise Complaint Location Map: July - Sept 2011



Noise Complaint Location Summary

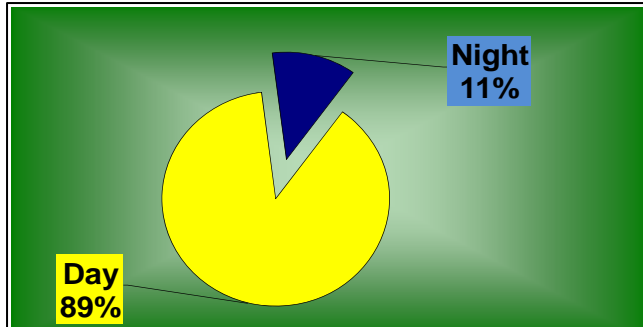
Quarterly Counts 2008 – 2011

3rd Quarter 2011 July - September

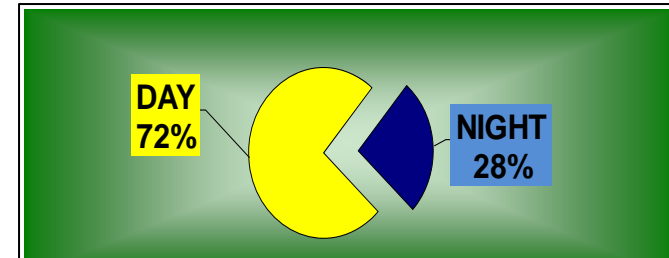


592 Complaints received from 32 locations

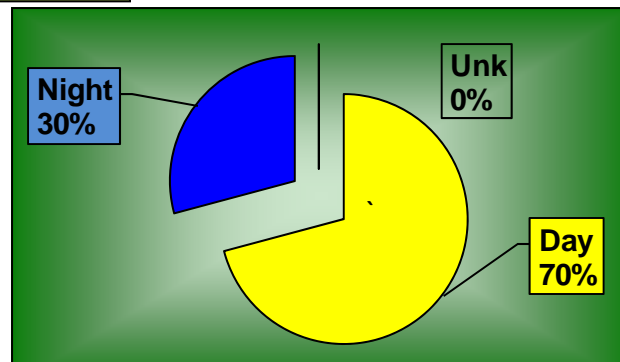
Noise Complaints – Day vs. Night



July – Sept. 2011 DAY VS. NIGHT*
AVG. DAILY AIRLINE
OPERATIONS = 127



July – Sept. 2011 DAY VS. NIGHT*
AVG. DAILY CARGO
OPERATIONS = 12



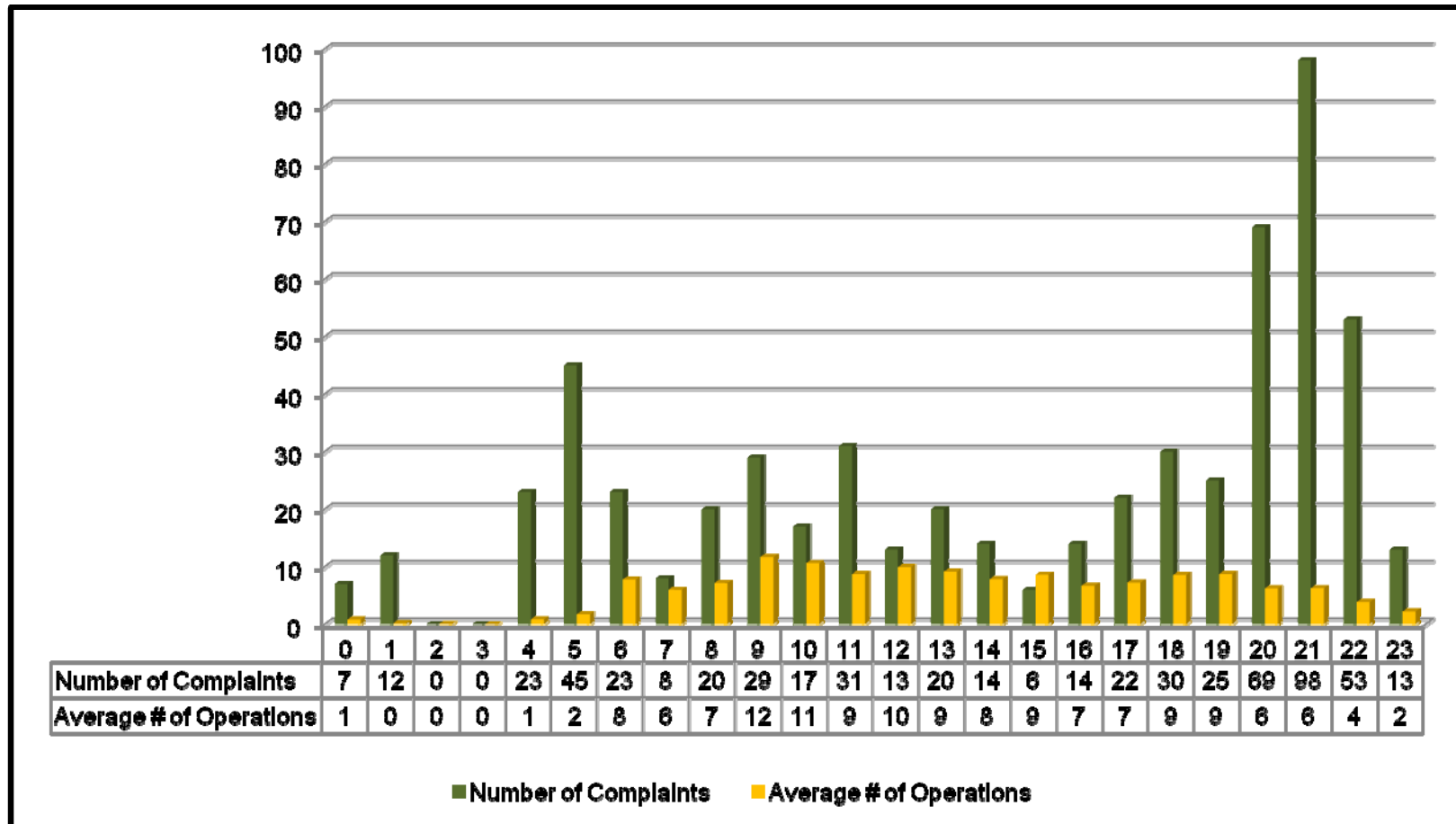
July – Sept. 2011
DAY VS. NIGHT* NOISE COMPLAINTS
TOTAL NOISE COMPLAINTS = 592

* Day 0700 – 2200
Night 2200 - 0700

Complaints vs. Operations *

Distribution by Hour

July – September 2011



* Operations = Airline and Cargo Operations Only

Airport Noise Advisory Panel (ANAP)

PANEL QUESTIONS



Reno-Tahoe
Airport Authority

And
up we
go.

Sound Insulation Program Construction

2011 Construction Season

- Substantial Completion Reached on all Construction Packages
- 532 Total Residences Sound Insulated in Reno, Sparks & Washoe County
- Staff Will be Closing Out Phases 17 & 18 Grants
- Funds Still Available in Grants 19, 20 & 21 for Future Program Phases



Sound Insulation Program Design

2011 Winter Design Season

- Staff is in the planning & design stages for 2012 construction
 - **Phase 19.5** – 4 Apartment Complexes in Sparks with 58 total units
 - Bid Opening Scheduled for February 16, 2012
 - **Phase 20.3** – Parkside Apartment Complex in Sparks with 288 units
 - Bid Opened Nov.17 & Alpine Energy Awarded Contract
 - **Phase 21.2** - 69 Homes in Reno, Sparks & Washoe County
 - Bid Opening Scheduled February 16, 2012
 - **Phase 21.1** – Belle Haven Apartment Complex in Sparks with 91 units
 - Bid Opening Scheduled March 22, 2012
 - *All Construction Scheduled for Spring, Summer &/or Fall*



Sound Insulation Program Status

Completed to Date (Through Year 2011)	4,103 residences
• City of Sparks:	1,899 residences
• City of Reno:	1,726 residences
• Unincorporated Washoe County:	478 residences
In Design (Construction 2012)	502 residences
• City of Sparks:	457 residences
• City of Reno:	35 residences
• Unincorporated Washoe County:	10 residences
Estimated Remaining Residences	809 residences
• City of Sparks:	168 residences
• City of Reno:	468 residences
• Unincorporated Washoe County:	173 residences

Airport Noise Advisory Panel (ANAP)

PANEL QUESTIONS



Reno-Tahoe
Airport Authority

And
up we
go.