

And  
up we  
go.



**June 2014**  
**Passenger and Cargo Traffic Statistics**  
**Reno-Tahoe International Airport**

**August 5, 2014**



**Reno-Tahoe**  
**Airport Authority**



**U.S. DOMESTIC INDUSTRY OVERVIEW FOR JUNE 2014**  
**All RNO Carriers Domestic Systemwide – year over year comparison**

Average Load Factor: 87.3%, Up 0.3 pts.  
 Number of Flights \*: Down (1.6%)  
 Capacity of Seats \*: Up 1.6%  
 Crude Oil : \$105.78 per barrel in JUNE 2014  
 vs. \$95.77 per barrel in JUNE 2013

**RNO OVERVIEW FOR JUNE 2014 – year over year comparison**

Total Passengers: Down (3.7%)  
 Avg. Enplaned Load Factor: 88.9% Up 3.8 pts.  
 Scheduled Departures: Up 0.3%  
 Scheduled Departing Seats: Down (4.4%)  
 Total Cargo: Up 7.5%

*Source: RNO Monthly Flight Activity Reports; \*Diio Mi*

**HIGHLIGHTS**

**June 2014 vs. June 2013**

|                              |                       |
|------------------------------|-----------------------|
| Total Passengers             | Down (3.7%)           |
| Enplaned Passengers          | Down (2.5%)           |
| Deplaned Passengers          | Down (4.8%)           |
| Average Enplaned Load Factor | 88.9 %<br>Up 3.8 pts. |
| Total Cargo                  | Up 7.5%               |

**Full Year 2014 vs. Full Year 2013**

|                              |                         |
|------------------------------|-------------------------|
| Total Passengers             | Down (6.9%)             |
| Enplaned Passengers          | Down (6.6%)             |
| Deplaned Passengers          | Down (7.1%)             |
| Average Enplaned Load Factor | 83.6%<br>Down (0.3 pts) |
| Total Cargo                  | Up 7.2%                 |

**JUNE 2014 SUMMARY**

Reno-Tahoe International Airport (RNO) served 316,720 passengers in June 2014, a decrease of (3.7%) versus June 2013.

Southwest Airlines is the airline seeing the largest decrease in total passengers, carrying 25,713 fewer passengers in June 2014 compared to the same period last year, representing a decrease of (15.0%). The loss of Oakland, Portland and Seattle coupled with Phoenix frequency reductions, decreased the scheduled monthly totals by 124 departures with 17,572 departing seats. Overall, Southwest’s scheduled departures were down (16.5%) in June 2014 versus June 2013.

On the positive side, Alaska Airlines, American Airlines and US Airways saw year-over-year June increases in the amount of 6,979 combined total passengers.

With respect to air cargo, RNO handled 9,679,744 pounds of cargo in June 2014, a 7.5% increase over June 2013. Overall, cargo performance continues to improve, showing strong cargo demand for Reno-Tahoe International Airport. Most cargo carriers experienced a rise in volumes, with FedEx increasing 12.6% and Ameriflight 4.4% year -over-year. UPS decreased (1.6%) in June.

In June 2014, RNO was served by seven major airlines providing 61 peak daily departures to 14 non-stop destinations. For June, our partner airlines reported a (4.4%) decrease in scheduled passenger seats compared to June 2013.

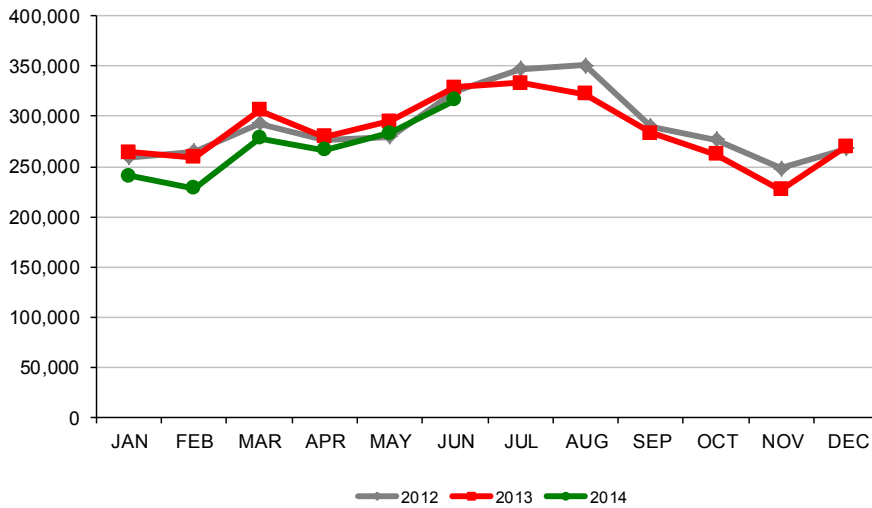




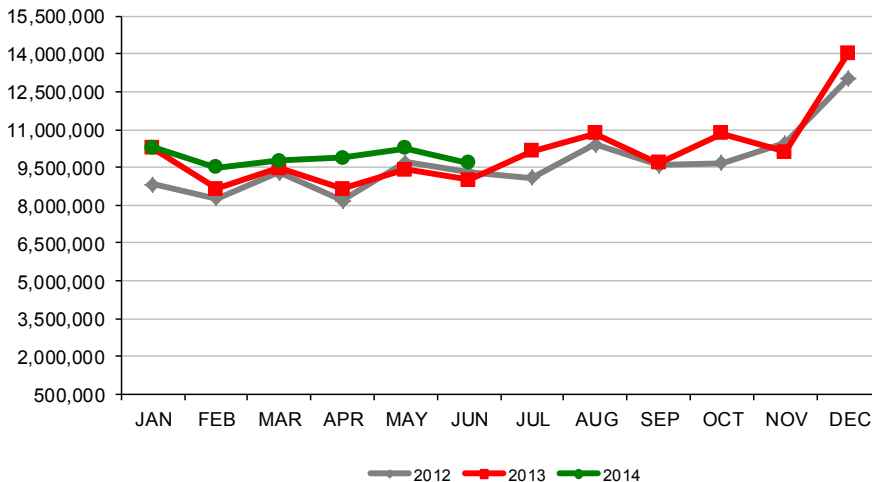
### TOTAL PASSENGERS

In June 2014, total passenger traffic at RNO decreased (3.7%) versus last year. Year-over-year passenger traffic on Alaska Airlines increased by 45% due to a new non-stop flight to Portland, OR which began in November 2013 and increased mid week service to San Jose, CA. Southwest cut service to Portland on June 7th. With respect to load factors, Allegiant Air, Delta Air Lines, Southwest, American Airlines and US Airways reported year-over-year increases. Allegiant Air reported a 92.2% average load factor, an 11.9 point increase from last year. Delta Air Lines reported 92% load factor, increasing 5.7 points. Alaska Airlines' load factor for the month has decreased (4.2pts) to 83% on increased capacity of 20%. U.S. Airways reported an average monthly load factor of 85.4% while United Airlines posted 92.2%. Although Southwest Airlines traffic decreased with the reductions of Portland, Seattle, two Oakland and one Phoenix frequency compared to last year, their load factor has increased to 81.2%.

Total Passengers



Total Cargo

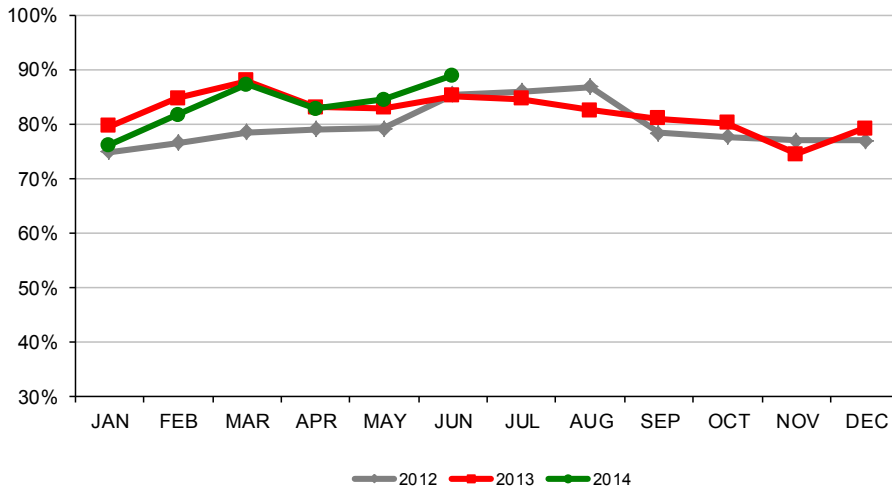


### TOTAL CARGO

Total cargo volume at RNO increased 7.5% in June 2014 versus the same period last year. FedEx was the driver with an increase of 12.6% year-over-year. UPS has decreased by 1.6% while Ameriflight (DHL) increased by 4.4% over the same period. The monthly volume represents the highest June on record since 2008.

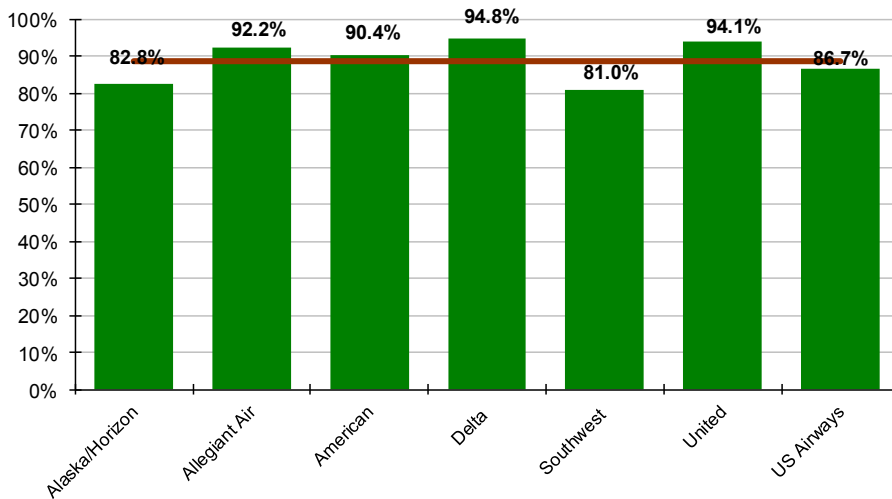


**Average Enplaned Load Factors**



| Load Factors June 2014 |       |         |            |
|------------------------|-------|---------|------------|
| Airline                | RNO   | Network | Difference |
| Alaska                 | 82.8% | 86.9%   | (4.1)      |
| Allegiant Air          | 92.2% | 90.6%   | 1.6        |
| American               | 90.4% | 85.0%   | 5.4        |
| Delta                  | 94.8% | 87.5%   | 7.3        |
| Southwest              | 81.0% | 86.1%   | (5.1)      |
| United                 | 94.1% | 87.1%   | 7.0        |
| US Airways             | 86.7% | 80.3%   | 6.4        |

**Enplaned Load Factors by Airlines**

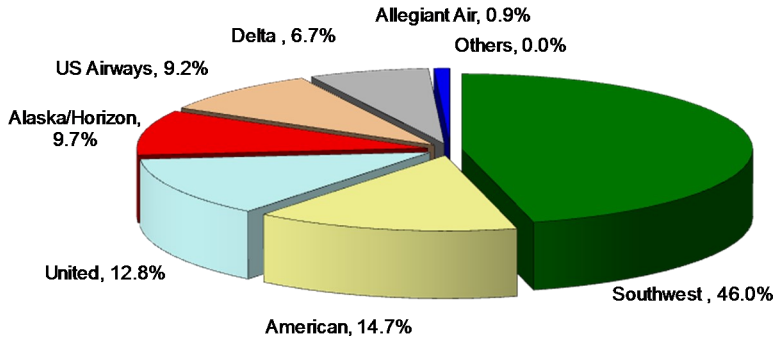


**AIRLINE LOAD FACTORS**

In June 2014, the average enplaned load factor at RNO was 88.9%, a 3.7% increase versus last year. Many airlines showed improved year-over-year average load factor. Delta Air Lines reported RNO load factor was 7.3 points higher than their network average, United Airlines reported RNO as 7.0 points higher than the Network average and U.S. Airways reported RNO load factor was 6.4 points higher than their network average.



**Air Carrier Market Share**



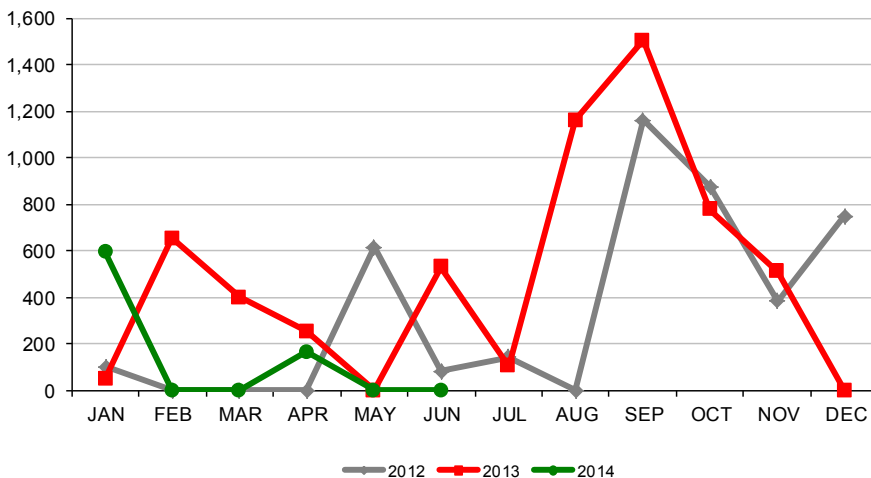
**AIRLINE MARKET SHARE**

In June 2014, Southwest Airlines carried a total of 145,807 passengers resulting in a market share of 46.0%. The next highest market shares were: American Airlines with 14.7%, United Airlines with 12.8%, Alaska Airlines with 9.7%, US Airways with 9.2%, Delta Air Lines at 6.7%, and Allegiant Air rounded out the carriers with 0.9% of the total passengers at Reno-Tahoe International Airport.

**Air Carrier Market Share**

|                | June-14 | June-13 | YOY Change |
|----------------|---------|---------|------------|
| Alaska/Horizon | 9.7%    | 6.3%    | 3.4        |
| Allegiant Air  | 0.9%    | 1.4%    | (0.5)      |
| American       | 14.7%   | 11.4%   | 3.2        |
| Delta          | 6.7%    | 7.2%    | (0.5)      |
| Southwest      | 46.0%   | 52.2%   | (6.1)      |
| United         | 12.8%   | 13.2%   | (0.4)      |
| US Airways     | 9.2%    | 8.2%    | 1.0        |
| Others         | 0.0%    | 0.0%    | 0.0        |

**Total Charter Passengers**

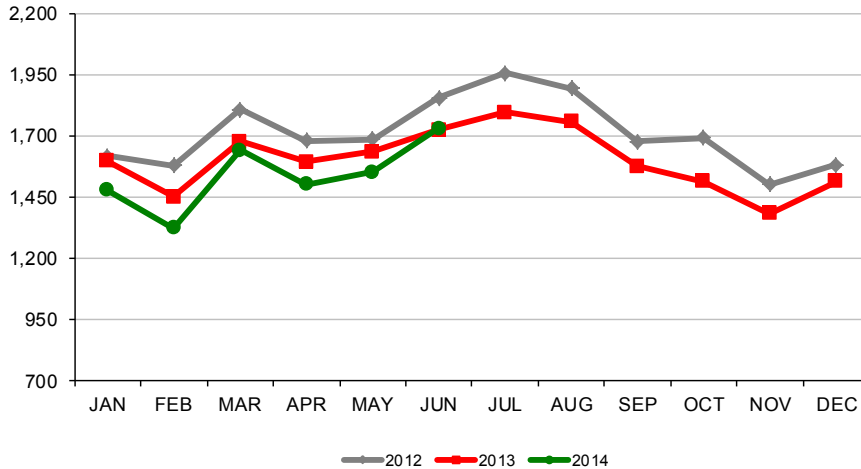


**CHARTER PASSENGERS**

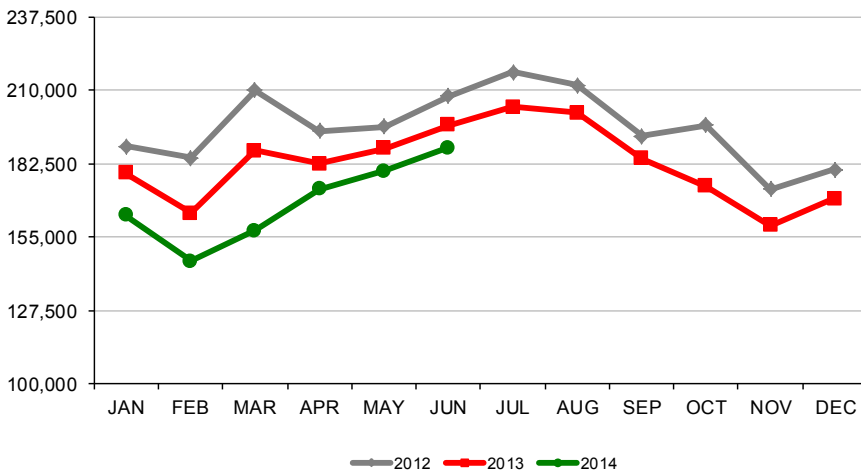
There were no charter passengers going through the Reno-Tahoe International Airport in June 2014.



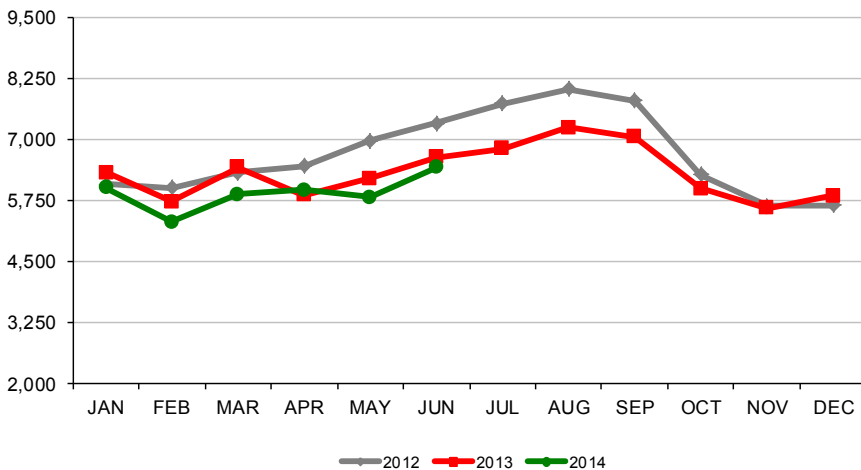
**Monthly Scheduled Departures**



**Monthly Scheduled Seats**



**Total Operations**



**Schedule Changes**

**Alaska Airlines**

- Restored some midweek service to San Jose, CA from one to two daily flights in June 2014, with 10 additional frequencies compared to May 2014.
- In addition, Alaska Airlines started service to Portland, OR with two flights per day starting on June 8.

**American Airlines**

- Effective June 12 it increased service to Los Angeles, CA from four to five daily flights.
- June 11 through August 18, it increased service to Dallas Fort Worth with a third daily departure and to Chicago O'Hare with a second daily departure.

**Delta Air Lines**

- Began Saturday only service to Minneapolis, MN on June 7.

**Southwest Airlines**

- Eliminated non-stop service to Portland, OR and Seattle, WA effective June 7.

**U.S. Airways**

- Will increase seasonal daily Phoenix service from four to six effective July 1, 2014.

**United Airlines**

- Daily Houston service has been reinstated effective June 5, 2014.

**TOTAL OPERATIONS**

A total of 6,420 operations occurred at RNO in June 2014, leading to a (3.2%) decrease compared to June 2013. Total operations include: Air Carrier, Air Taxi, General Aviation and Military operations as reported by the FAA.



# Reno-Tahoe International Airport

## Total Passengers

### June-14

|                    | Passengers       |                  | YOY %        | Passengers     |              | YOY % |
|--------------------|------------------|------------------|--------------|----------------|--------------|-------|
|                    | 2012             | 2013             | Change       | 2014           | Change       |       |
| JAN                | 259,012          | 264,265          | 2.0%         | 241,181        | -8.7%        |       |
| FEB                | 265,017          | 259,299          | -2.2%        | 228,035        | -12.1%       |       |
| MAR                | 292,939          | 306,049          | 4.5%         | 278,172        | -9.1%        |       |
| <b>1st Quarter</b> | <b>816,968</b>   | <b>829,613</b>   | <b>1.5%</b>  | <b>747,388</b> | <b>-9.9%</b> |       |
| APR                | 275,926          | 279,418          | 1.3%         | 266,800        | -4.5%        |       |
| MAY                | 279,857          | 295,494          | 5.6%         | 283,225        | -4.2%        |       |
| JUN                | 325,260          | 328,755          | 1.1%         | 316,720        | -3.7%        |       |
| <b>2nd Quarter</b> | <b>881,043</b>   | <b>903,667</b>   | <b>2.6%</b>  | <b>866,745</b> | <b>-4.1%</b> |       |
| JUL                | 347,060          | 333,321          | -4.0%        |                |              |       |
| AUG                | 350,934          | 322,083          | -8.2%        |                |              |       |
| SEP                | 290,311          | 283,565          | -2.3%        |                |              |       |
| <b>3rd Quarter</b> | <b>988,305</b>   | <b>938,969</b>   | <b>-5.0%</b> |                |              |       |
| OCT                | 277,030          | 262,473          | -5.3%        |                |              |       |
| NOV                | 248,067          | 227,213          | -8.4%        |                |              |       |
| DEC                | 267,739          | 270,051          | 0.9%         |                |              |       |
| <b>4th Quarter</b> | <b>792,836</b>   | <b>759,737</b>   | <b>-4.2%</b> |                |              |       |
| <b>TOTAL</b>       | <b>3,479,152</b> | <b>3,431,986</b> | <b>-1.4%</b> |                |              |       |
| <b>YTD Total</b>   |                  | 1,733,280        |              | 1,614,133      | -6.9%        |       |

## Total Cargo

### June-14

|                    | 2012               |                    | YOY %<br>Change | 2014              |               | YOY %<br>Change |
|--------------------|--------------------|--------------------|-----------------|-------------------|---------------|-----------------|
|                    | Cargo in Pounds    |                    |                 | Pounds            | Metric Tons   |                 |
| JAN                | 8,813,491          | 10,269,546         | 16.5%           | 10,303,380        | 4,673         | 0.3%            |
| FEB                | 8,274,037          | 8,635,807          | 4.4%            | 9,486,697         | 4,302         | 9.9%            |
| MAR                | 9,304,722          | 9,457,376          | 1.6%            | 9,758,391         | 4,426         | 3.2%            |
| <b>1st Quarter</b> | <b>26,392,250</b>  | <b>28,362,729</b>  | <b>7.5%</b>     | <b>29,548,468</b> | <b>13,401</b> | <b>4.2%</b>     |
| APR                | 8,175,766          | 8,639,232          | 5.7%            | 9,874,401         | 4,478         | 14.3%           |
| MAY                | 9,706,074          | 9,398,212          | -3.2%           | 10,269,963        | 4,658         | 9.3%            |
| JUN                | 9,302,777          | 9,001,339          | -3.2%           | 9,679,744         | 4,390         | 7.5%            |
| <b>2nd Quarter</b> | <b>27,184,617</b>  | <b>27,038,783</b>  | <b>-0.5%</b>    | <b>29,824,108</b> | <b>13,526</b> | <b>10.3%</b>    |
| JUL                | 9,096,013          | 10,149,807         | 11.6%           |                   |               |                 |
| AUG                | 10,398,754         | 10,859,694         | 4.4%            |                   |               |                 |
| SEP                | 9,573,812          | 9,689,115          | 1.2%            |                   |               |                 |
| <b>3rd Quarter</b> | <b>29,068,579</b>  | <b>30,698,616</b>  | <b>5.6%</b>     |                   |               |                 |
| OCT                | 9,677,334          | 10,834,930         | 12.0%           |                   |               |                 |
| NOV                | 10,469,628         | 10,099,499         | -3.5%           |                   |               |                 |
| DEC                | 13,007,942         | 13,998,438         | 7.6%            |                   |               |                 |
| <b>4th Quarter</b> | <b>33,154,904</b>  | <b>34,932,867</b>  | <b>5.4%</b>     |                   |               |                 |
| <b>TOTAL</b>       | <b>115,800,350</b> | <b>121,032,995</b> | <b>4.5%</b>     |                   |               |                 |
| <b>YTD Total</b>   |                    | 55,401,512         |                 | 59,372,576        | 26,926        | 7.2%            |

## Total Scheduled Enplaned Passengers

### June-14

|                  | 2012             | 2013             | 2014    |
|------------------|------------------|------------------|---------|
| JAN              | 131,484          | 133,439          | 121,421 |
| FEB              | 131,201          | 129,283          | 113,777 |
| MAR              | 148,163          | 154,142          | 142,542 |
| APR              | 138,938          | 140,054          | 132,183 |
| MAY              | 138,309          | 146,562          | 140,297 |
| JUN              | 161,607          | 162,489          | 158,827 |
| JUL              | 172,563          | 165,218          |         |
| AUG              | 173,097          | 160,091          |         |
| SEP              | 149,113          | 144,896          |         |
| OCT              | 139,927          | 132,347          |         |
| NOV              | 123,267          | 113,903          |         |
| DEC              | 129,707          | 131,328          |         |
| <b>TOTAL</b>     | <b>1,737,376</b> | <b>1,713,752</b> |         |
| <b>YTD Total</b> |                  | 865,969          | 809,047 |

## Total Deplaned Passengers

### June-14

|                  | 2012             | 2013             | 2014    |
|------------------|------------------|------------------|---------|
| JAN              | 127,179          | 130,579          | 119,481 |
| FEB              | 133,816          | 130,016          | 114,258 |
| MAR              | 144,776          | 151,506          | 135,630 |
| APR              | 136,988          | 139,265          | 134,617 |
| MAY              | 141,282          | 148,932          | 142,928 |
| JUN              | 163,571          | 165,931          | 157,893 |
| JUL              | 174,432          | 168,053          |         |
| AUG              | 177,837          | 161,513          |         |
| SEP              | 140,626          | 137,942          |         |
| OCT              | 136,719          | 129,736          |         |
| NOV              | 124,676          | 113,051          |         |
| DEC              | 137,648          | 138,723          |         |
| <b>TOTAL</b>     | <b>1,739,550</b> | <b>1,715,247</b> |         |
| <b>YTD Total</b> |                  | 866,229          | 804,807 |

## Enplaned Passengers & Load Factor

|                | Enplaned PAX | June-14 | June-13 |
|----------------|--------------|---------|---------|
| Alaska/Horizon | 15,286       | 82.8%   | 85.5%   |
| Allegiant Air  | 1,378        | 92.2%   | 79.7%   |
| American       | 22,967       | 90.4%   | 88.4%   |
| Delta          | 10,908       | 94.8%   | 87.9%   |
| Southwest      | 72,728       | 81.0%   | 78.5%   |
| United         | 20,717       | 94.1%   | 93.7%   |
| US Airways     | 14,843       | 86.7%   | 82.2%   |