

And  
up we  
go.



**July 2013**  
**Passenger and Cargo Traffic Statistics**  
**Reno-Tahoe International Airport**

**August 22, 2013**



**Reno-Tahoe**  
**Airport Authority**



**U.S. DOMESTIC INDUSTRY OVERVIEW FOR JULY 2013**  
**All RNO Carriers Systemwide – year over year comparison**

Average Load Factor:	87.6%, Down (0.1) pts.
Number of Flights *:	Down (-0.8%)
Capacity of Seats *:	Up 1.2%
Crude Oil **:	\$104.67 per barrel in July 2013 vs. \$87.93 per barrel in July 2012

**RNO OVERVIEW FOR JULY 2013 – year over year comparison**

Total Passengers:	Down (4.0%)
Avg. Enplaned Load Factor:	84.7% Down (1.3) pts.
Passenger Flights:	Down (12.2%)
Total Seats:	Down (10.1%)
Total Cargo:	Up 11.6%

*Source: RNO Monthly Flight Activity Reports; \*APGDat; \*\* U.S. Energy Information Administration*

**JULY 2013 SUMMARY**

Reno-Tahoe International Airport (RNO) served 333,321 passengers in July 2013, a decrease of 4.0% versus the July 2012. Part of this decline, as compared to previous months, can be attributed to the end of the combined bowling championships which finished in June.

Year-to-date, RNO has served 2,066,601 passengers, an increase of 1.1% versus the same period in 2012.

With respect to Air Cargo, RNO handled 10,149,807 pounds of cargo in July 2013, an increase of 11.6% versus July 2012.

Year-to-date, RNO handled 65,551,319 pounds of cargo, an increase of 4.6% versus the prior year.

In July 2013, RNO was served by seven major airlines providing 61 daily departures to 15 non-stop destinations. RNO reported a (6.0%) decrease in total seats versus July 2012, whereas, total flights were down (8.3%) for the same period. U.S. airlines continue to adjust capacity by eliminating less profitable routes and downgauging aircraft size on certain routes, aligning it more closely with passenger demand to offset high operating costs, especially as the price of oil rises.

Southwest Airlines saw the largest drop in total passengers, carrying 17,501 fewer passengers in July 2013 compared July 2012. The loss of both Oakland and Salt Lake City service resulted in 115 fewer departing flights and 15,761 less departing seats July 2013 vs. July 2012.

Allegiant Air, however, continues to operate twice weekly non-stop flights to both Las Vegas, NV and Bellingham, WA. These flights represent year-over-year

**HIGHLIGHTS**

**July 2013 vs. July 2012**

**Total Passengers  
Down (4.0%)**

**Enplaned Passengers  
Down (4.3%)**

**Deplaned Passengers  
Down (3.7%)**

**Average Enplaned Load  
Factor  
84.7%, Down (1.3) points**

**Total Cargo  
Up 11.6%**



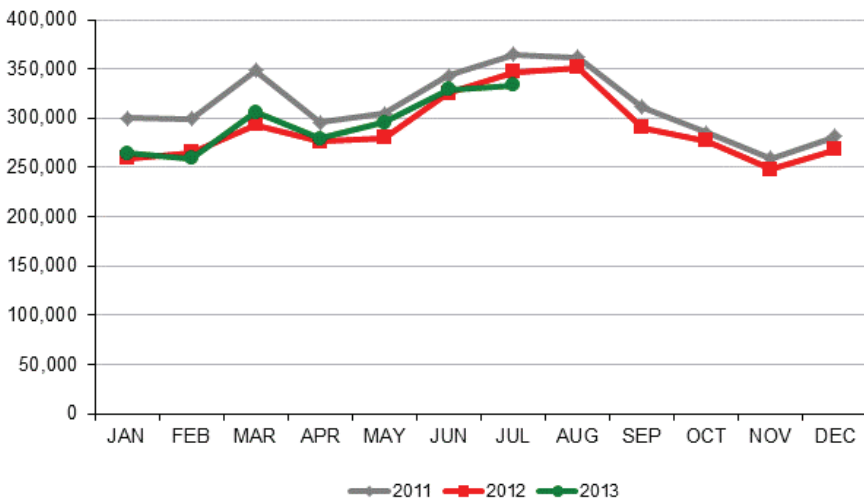


increases for Allegiant, as they did not operate these flights in July 2012. Allegiant will also begin twice weekly service to Oakland beginning August 30th. The Oakland flights operate on Fridays and Sundays using a 166-seat MD80 aircraft.

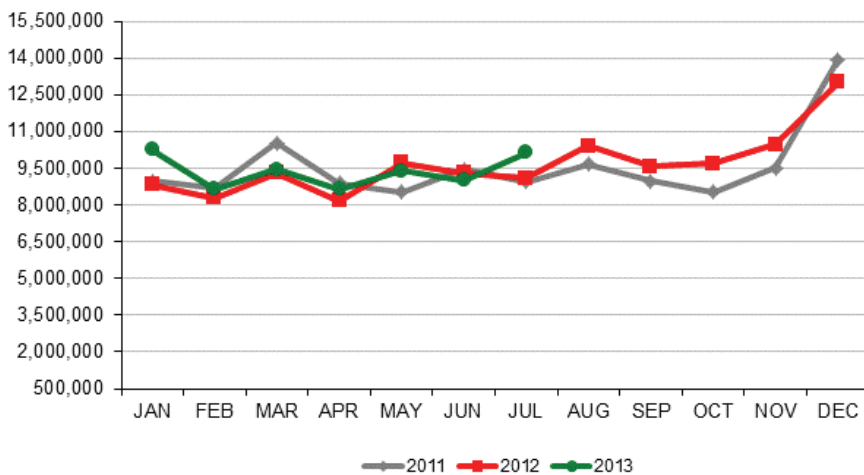
Alaska Airlines began non-stop daily flights between Reno and San Jose in June 2012, providing connections to the entire Alaska network each day. In addition, Alaska has announced that it will begin nonstop service between Portland, OR and Reno-Tahoe, effective November 8th. The daily flight will be operated utilizing a 76-seat Q400 aircraft.

In July 2013, the average enplaned load factor for scheduled airlines was 84.7%, down (1.3) percentage points compared to July of the prior year.

**Total Passengers**



**Total Cargo**



## TOTAL PASSENGERS

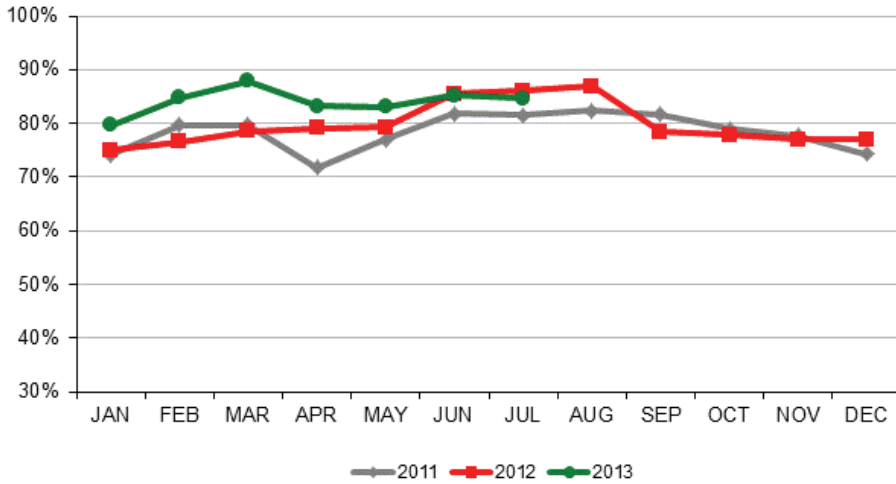
In July 2013, total passenger traffic at RNO decreased (4.0%) versus last year. Year-over-year passenger traffic on Allegiant Air increased exponentially due to the new non-stop flights to both Las Vegas and Bellingham, WA. With increased service to Los Angeles, American Airlines' passenger traffic grew 2.5% for the same period. United reported an increase of 3.0% which resulted in a 93.2% average enplaned load factor. Alaska Air decreased (4.6%) as a result of day of week adjustments to San Jose. Delta Air Lines decreased (7.4%) on declining capacity and flights to/from Salt Lake City. Southwest Airlines decreased (9.4%) with the loss of Oakland and Salt Lake City service compared to last year. US Airways was flat year-over-year.

## TOTAL CARGO

Total cargo volume at RNO increased 11.6% in July 2013 versus the same period last year. This was largely driven by a 19.4% year-over-year increase from FedEx. Both Ameriflight and UPS saw year-over-year decreases in total cargo.



**Average Enplaned Load Factors**



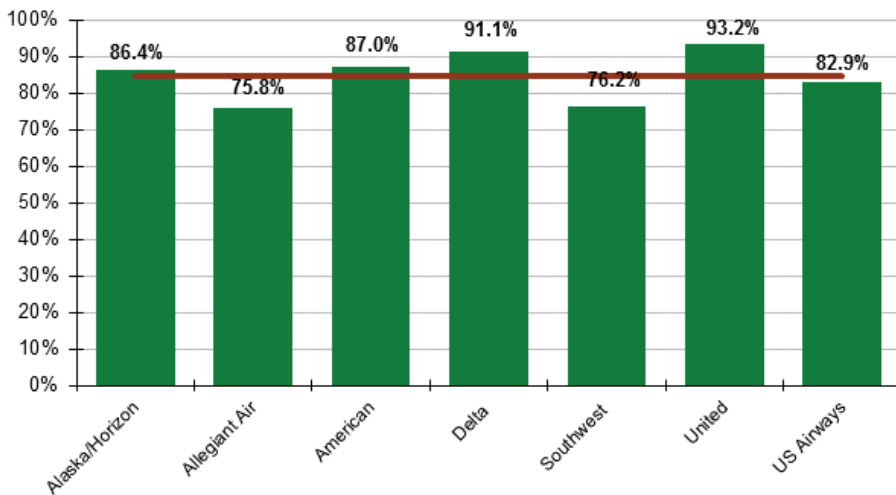
Load Factors July 2013			
Airline	RNO	Network	Difference
American Airlines	87.0%	88.7%	(1.7)
Alaska Airlines	86.4%	84.7%	1.7
Allegiant	75.8%	92.7%	(16.9)
Delta Air Lines	91.1%	86.0%	5.1
Southwest Airlines	76.2%	83.5%	(7.3)
United Airlines	93.2%	88.2%	5.0
US Airways	82.9%	87.8%	(4.9)

Source: Airline Traffic Reports; July 2013

Load factors are for domestic service only, where applicable

Horizon Air figures used for Alaska

**Enplaned Load Factors by Airlines**

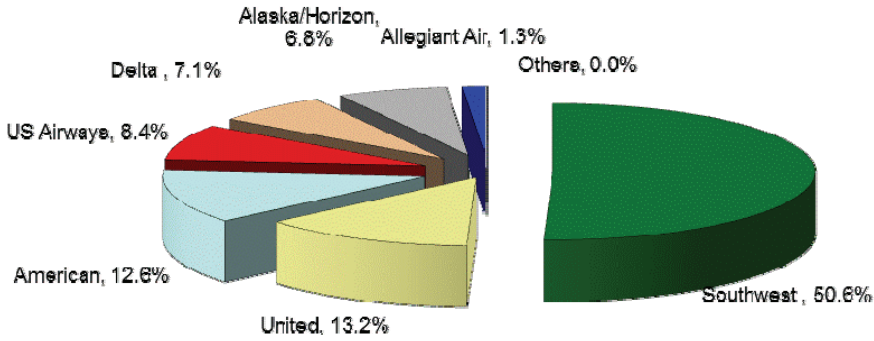


**AIRLINE LOAD FACTORS**

In June 2013, the average enplaned load factor at RNO was 84.7%, a decrease of (1.3) percentage points versus last year.



**Air Carrier Market Share**



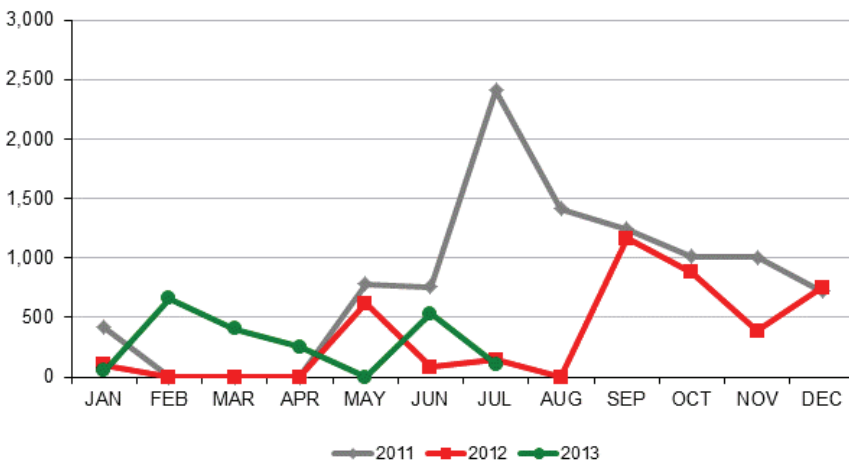
**AIRLINE MARKET SHARE**

In July 2013, Southwest Airlines carried a total of 168,558 passengers resulting in a market share of 50.6%. The next highest market share was United Airlines at 13.2% followed by American Airlines with 12.6%, US Airways with 8.4%, Delta Air Lines at 7.1%, Alaska Airlines carried 6.8% and Allegiant Air rounded out the carriers with 1.3% of the total passengers at Reno-Tahoe International Airport.

**Air Carrier Market Share**

	Jul-13	Jul-12	YOY Change
Alaska/Horizon	6.8%	6.8%	(0.0)
Allegiant Air	1.3%	n/a	n/a
American	12.6%	11.8%	0.8
Delta	7.1%	7.3%	(0.3)
Southwest	50.6%	53.6%	(3.0)
United	13.2%	12.3%	0.9
US Airways	8.4%	8.1%	0.3
Others	0.0%	0.0%	0.0

**Total Domestic Charter Passengers**

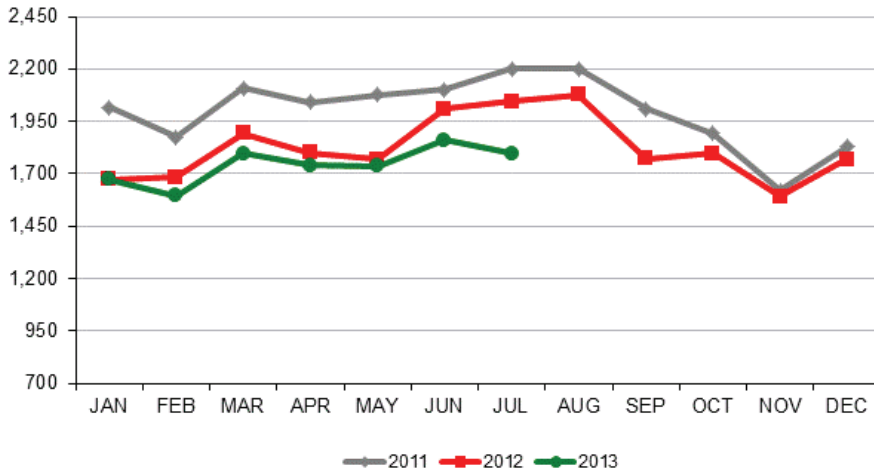


**DOMESTIC CHARTER PASSENGERS**

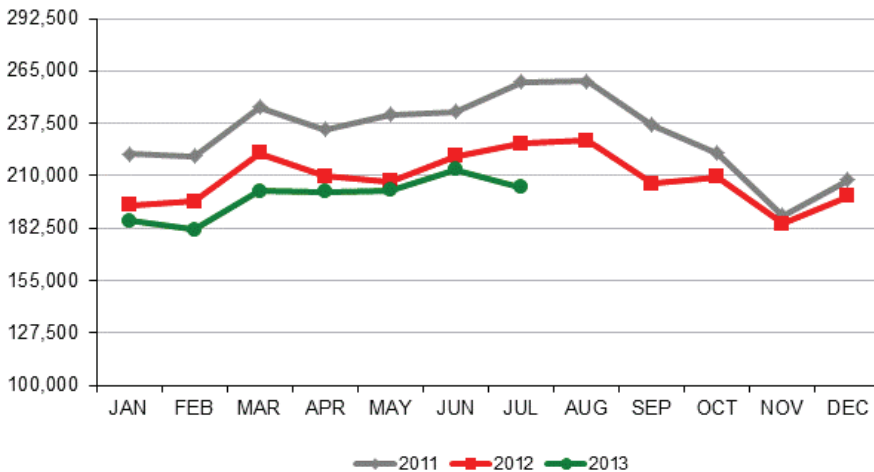
During the month of July 2013, 104 domestic charter passengers moved through Reno-Tahoe International Airport. This compares to 144 charter passengers in July 2012.



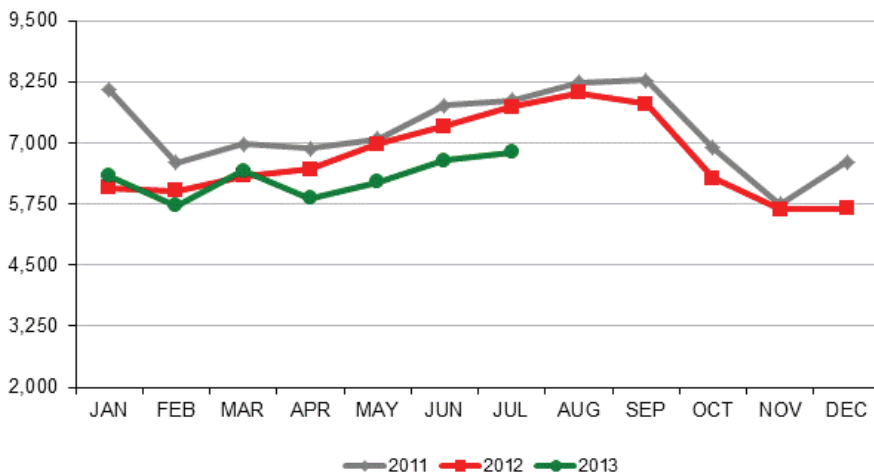
**Monthly Scheduled Departures**



**Monthly Scheduled Seats**



**Total Operations**



**Schedule Changes**

**Allegiant Air**

- Started twice weekly non-stop service to Las Vegas in February 2013.
- Began twice weekly flights to Bellingham effective June 6th, 2013.

**American Airlines**

- Daily non-stop flights to Los Angeles increased from three flights a day to four flights a day in August 2012.
- Seasonally increased the number of daily flights to Dallas/Ft. Worth from two to three.

**Southwest Airlines**

- Eliminated non-stop service to Salt Lake City in January 2013.
- Eliminated non-stop service to Oakland in June 2013.

**United Airlines**

- Resumed its seasonal service to Houston, TX effective June 6th, which will continue through August 26th.

**TOTAL OPERATIONS**

A total of 6,806 operations occurred at RNO in July 2013, down (11.9%) versus the same period last year. Total operations include Air Carrier, Air Taxi, General Aviation and Military operations as reported by the FAA.



# Reno-Tahoe International Airport

Total Passengers						
July-13						
	Passengers		YOY %	Passengers		YOY %
	2011	2012	Change	2013	Change	
JAN	300,125	259,012	-13.7%	264,265	2.0%	
FEB	299,090	265,017	-11.4%	259,299	-2.2%	
MAR	348,583	292,939	-16.0%	306,049	4.5%	
<b>1st Quarter</b>	<b>947,798</b>	<b>816,968</b>	<b>-13.8%</b>	<b>829,613</b>	<b>1.5%</b>	
APR	295,537	275,926	-6.6%	279,418	1.3%	
MAY	304,220	279,857	-8.0%	295,494	5.6%	
JUN	343,054	325,260	-5.2%	328,755	1.1%	
<b>2nd Quarter</b>	<b>942,811</b>	<b>881,043</b>	<b>-6.6%</b>	<b>903,667</b>	<b>2.6%</b>	
JUL	364,849	347,060	-4.9%	333,321	-4.0%	
AUG	361,348	350,934	-2.9%			
SEP	311,031	290,311	-6.7%			
<b>3rd Quarter</b>	<b>1,037,228</b>	<b>988,305</b>	<b>-4.7%</b>			
OCT	285,490	277,030	-3.0%			
NOV	259,425	248,067	-4.4%			
DEC	281,403	267,739	-4.9%			
<b>4th Quarter</b>	<b>826,318</b>	<b>792,836</b>	<b>-4.1%</b>			
<b>TOTAL</b>	<b>3,754,155</b>	<b>3,479,152</b>	<b>-7.3%</b>			
<b>YTD Total</b>		2,045,071		2,066,601	1.1%	

Total Cargo						
July-13						
	2011	2012	YOY %	2013		YOY %
	Cargo in Pounds		Change	Pounds	Metric Tons	Change
JAN	8,959,543	8,813,491	-1.6%	10,269,546	4,657	16.5%
FEB	8,674,321	8,274,037	-4.6%	8,635,807	3,916	4.4%
MAR	10,513,446	9,304,722	-11.5%	9,457,376	4,289	1.6%
<b>1st Quarter</b>	<b>28,147,310</b>	<b>26,392,250</b>	<b>-6.2%</b>	<b>28,362,729</b>	<b>12,863</b>	<b>7.5%</b>
APR	8,870,669	8,175,766	-7.8%	8,639,232	3,918	5.7%
MAY	8,510,228	9,706,074	14.1%	9,398,212	4,262	-3.2%
JUN	9,437,259	9,302,777	-1.4%	9,001,339	4,082	-3.2%
<b>2nd Quarter</b>	<b>26,818,156</b>	<b>27,184,617</b>	<b>1.4%</b>	<b>27,038,783</b>	<b>12,262</b>	<b>-0.5%</b>
JUL	8,932,737	9,096,013	1.8%	10,149,807	4,603	11.6%
AUG	9,646,833	10,398,754	7.8%			
SEP	8,958,988	9,573,812	6.9%			
<b>3rd Quarter</b>	<b>27,538,558</b>	<b>29,068,579</b>	<b>5.6%</b>			
OCT	8,527,399	9,677,334	13.5%			
NOV	9,494,432	10,469,628	10.3%			
DEC	13,928,256	13,007,942	-6.6%			
<b>4th Quarter</b>	<b>31,950,087</b>	<b>33,154,904</b>	<b>3.8%</b>			
<b>TOTAL</b>	<b>114,454,111</b>	<b>115,800,350</b>	<b>1.2%</b>			
<b>YTD Total</b>		62,672,880		65,551,319	29,728	4.6%

Total Scheduled Enplaned Passengers				
July-13				
	2011	2012	2013	YOY %
				Change
JAN	151,753	131,484	133,439	1.5%
FEB	149,253	131,201	129,283	-1.5%
MAR	176,029	148,163	154,142	4.0%
APR	148,920	138,938	140,054	0.8%
MAY	151,672	138,309	146,562	6.0%
JUN	169,309	161,607	162,489	0.5%
JUL	179,717	172,563	165,218	-4.3%
AUG	178,906	173,097		
SEP	158,663	149,113		
OCT	143,851	139,927		
NOV	129,071	123,267		
DEC	136,483	129,707		
<b>TOTAL</b>	<b>1,873,627</b>	<b>1,737,376</b>		
<b>YTD Total</b>		1,022,265	1,031,187	0.9%

Total Deplaned Passengers				
July-13				
	2011	2012	2013	YOY %
				Change
JAN	148,053	127,179	130,579	2.7%
FEB	149,837	133,816	130,016	-2.8%
MAR	172,554	144,776	151,506	4.6%
APR	146,617	136,988	139,265	1.7%
MAY	152,207	141,282	148,932	5.4%
JUN	173,343	163,571	165,931	1.4%
JUL	183,814	174,432	168,053	-3.7%
AUG	181,611	177,837		
SEP	151,844	140,626		
OCT	141,158	136,719		
NOV	129,993	124,676		
DEC	144,557	137,648		
<b>TOTAL</b>	<b>1,875,588</b>	<b>1,739,550</b>		
<b>YTD Total</b>		1,022,044	1,034,282	1.2%

Enplaned Passengers & Load Factor				
	Enplaned PAX	Jul-13	Jul-12	Diff.
Alaska/Horizon	11,096	86.4%	83.8%	2.6
Allegiant Air	2,140	75.8%	n/a	n/a
American	20,329	87.0%	90.0%	-3.0
Delta	11,806	91.1%	91.0%	0.0
Southwest	83,947	76.2%	73.7%	2.4
United	22,097	93.2%	90.0%	3.2
US Airways	13,803	82.9%	87.5%	-4.5

Source: RNO Monthly Flight Activity Reports