



Passenger and Cargo Statistics Report

Reno-Tahoe International Airport
November 2016

U.S. DOMESTIC INDUSTRY OVERVIEW FOR NOVEMBER 2016

All RNO Carriers Domestic Systemwide – year over year comparison

Average Load Factor:	84.6%, up 0.8 pts.
Number of Flights *:	Down 0.2%
Capacity of Seats *:	Up 2.6%
Crude Oil Average:	\$45.71 per barrel in Nov. 2016 vs. \$42.44 per barrel in Nov. 2015

RNO OVERVIEW FOR NOVEMBER 2016 – year over year comparison

Total Passengers:	Up 6.7%
Avg. Enplaned Load Factor:	74.8%, down 0.3 pts.
Actual Departures:	Up 7.1%
Actual Departing Seats:	Up 7.8%
Total Cargo:	Up 12.3%

Source: RNO Monthly Flight Activity Reports; * INNOVATA Flight Schedule via Diio

NOVEMBER 2016 SUMMARY

Reno-Tahoe International Airport (RNO) served 270,367 passengers in November 2016, which is up 6.7% versus November 2015. The airport experienced positive passenger growth for the 18th consecutive month with respect to year over year monthly increases. During the first eleven months of 2016, RNO served 3,350,287 passengers, representing an increase of 6.5% when compared to the same period last year.

In November 2016, RNO was served by eight airlines providing 1,545 departures to 19 non-stop destinations (23 non-stop destinations if seasonal and new announced flights are included). At RNO, total seat capacity increased 7.8% and flights increased 7.1% when compared to November 2015.

In November 2016, RNO handled 13,089,468 pounds of air cargo, an increase of 12.3% versus November 2015. During the first eleven months of 2016, RNO handled 139,163,748 pounds of air cargo, an increase of 15.4% when compared to the same period last year.

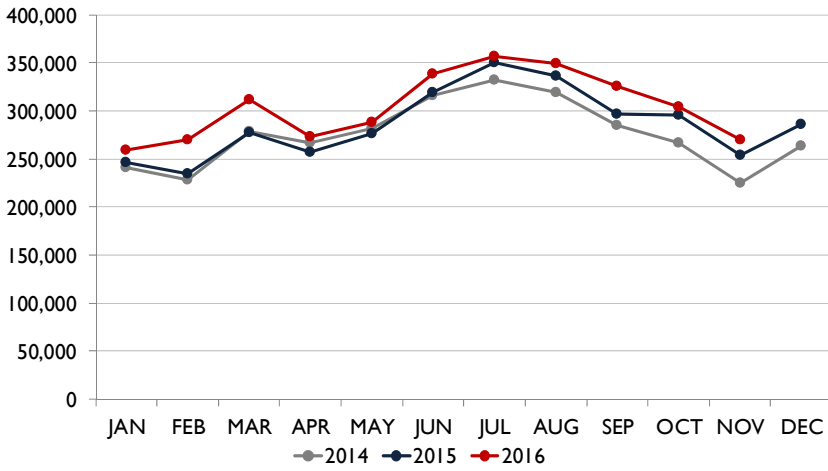
On December 19, 2016, Delta Air Lines began non-stop seasonal flights between RNO and Atlanta International Airport. This flight will operate as a three times per week service until January 3, 2017. On January 7, 2017, the flight reduces to a once a week schedule, Saturday arrival and Sunday departure, and will operate until March 26, 2017. The airline will utilize a 180-seat Boeing 757 on this route.

Starting January 7, 2017, Southwest Airlines will begin a once a week seasonal non-stop flight between RNO and Dallas Love Field Airport (DAL). Starting March 12, 2017, the airline will increase the number of flights between RNO and DAL from one flight a week to two flights a week. The additional flight will operate on Sundays.



Starting February 15, 2017, Allegiant Air will increase the number of flights between RNO and Las Vegas from three times a week to six times a week. The airline will provide this service from Sunday through Friday.

PASSENGERS



Passengers

Southwest Airlines, the largest carrier at RNO, served 119,361 passengers during the month of November 2016, up 6.4% when compared to November 2015.

In November 2016, all airlines at RNO reported a year-over-year increase in passenger traffic with the exception of American Airlines and Delta Air Lines. JetBlue Airways reported a passenger growth of 73.3% (mainly due to the new RNO-Long Beach flight), Allegiant Air was up 69.7%, Alaska Airlines grew 10.7% and United Airlines reported an increase of 2.2% during the same period. Volaris served 3,091 passengers during the month of November 2016, an increase of 33% when compared to November 2015.

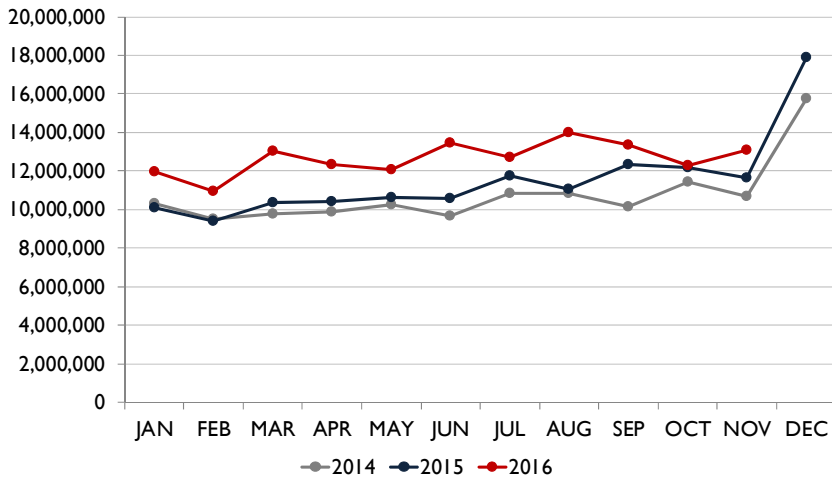
Delta Air Lines reported a passenger decrease of 1.9% and American Airlines was down 4.4% during the same period.

Cargo

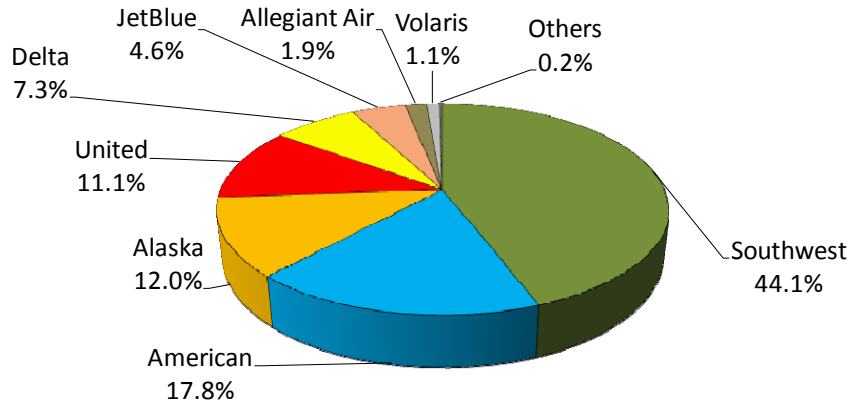
RNO handled 13,089,468 pounds of air cargo in November 2016, representing a year-over-year increase of 12.3%.

In November 2016, the cargo tonnage of DHL increased 17.2%, UPS was up 9.2% and FedEx grew 14.5% when compared to November 2015.

CARGO



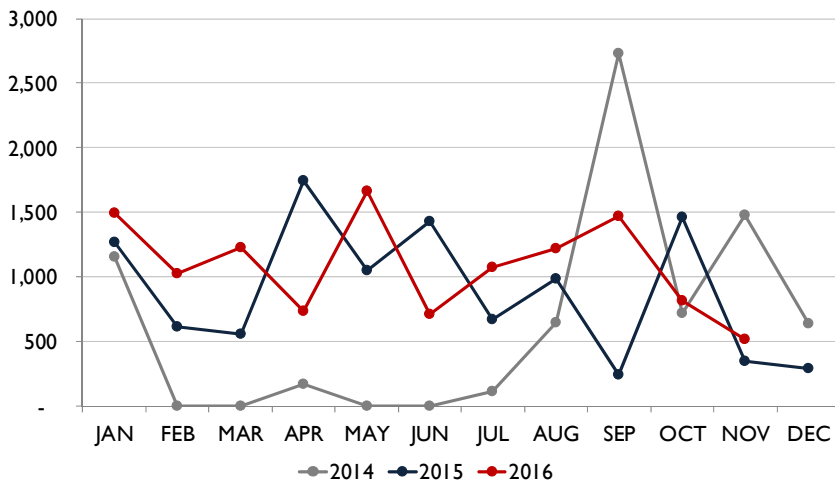
AIR CARRIER MARKET SHARE (passenger airlines)



	November-16	November-15	YOY Change
Alaska/Horizon	12.0%	11.5%	0.4
Allegiant Air	1.9%	1.2%	0.7
American	17.8%	19.9%	(2.1)
Delta	7.3%	7.9%	(0.6)
JetBlue	4.6%	2.8%	1.8
Southwest	44.1%	44.3%	(0.1)
United	11.1%	11.6%	(0.5)
Volaris	1.1%	0.9%	0.2
Others	0.2%	0.0%	0.2

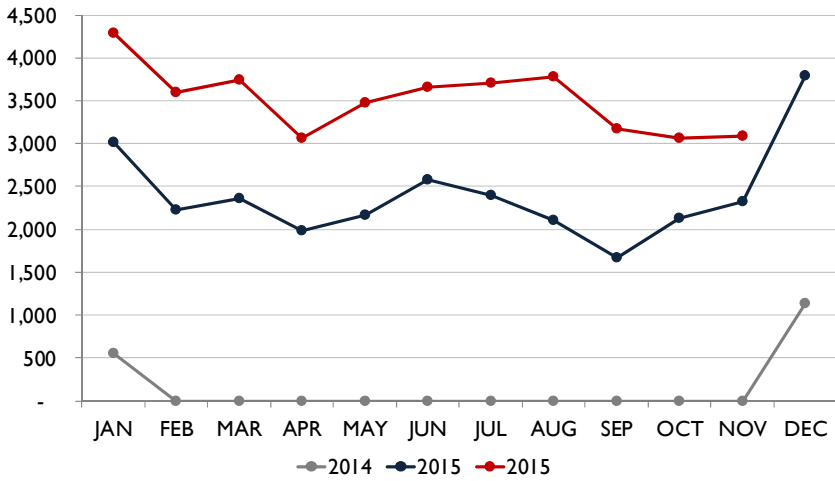
Note: numbers are rounded up to one decimal figure.

TOTAL CHARTER PASSENGERS



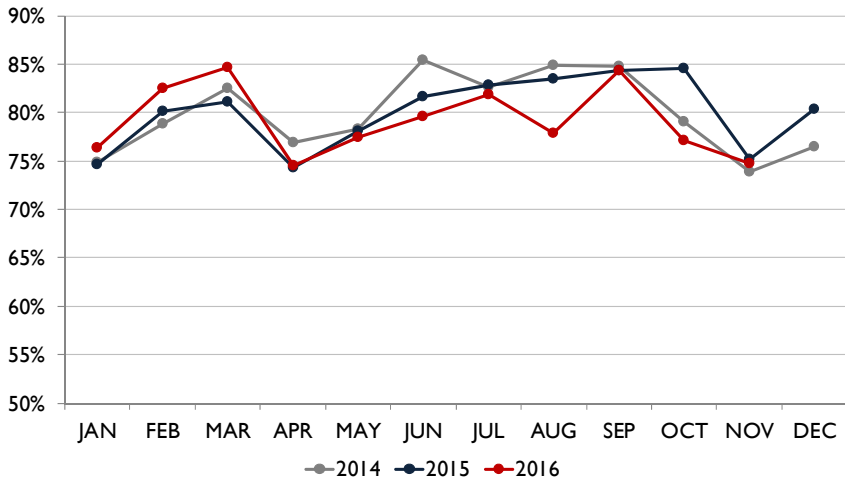
In November 2016, RNO served 518 charter passengers through the terminal.

TOTAL INTERNATIONAL PASSENGERS



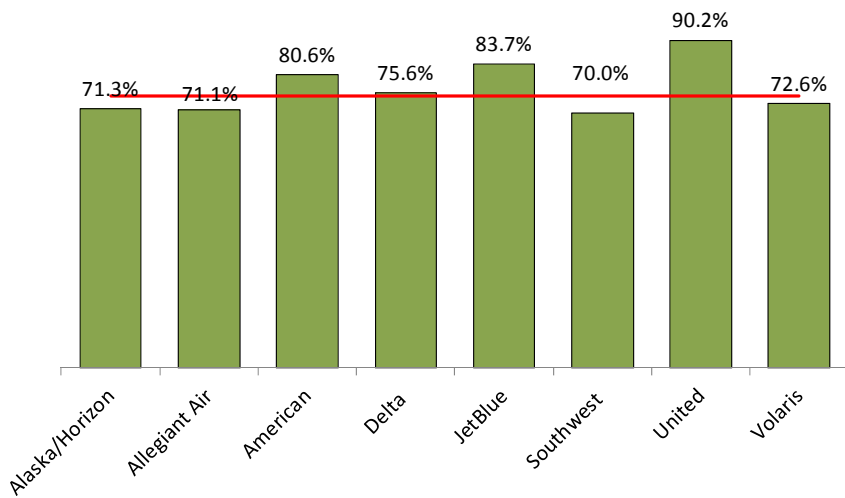
In November 2016, RNO served a total of 3,091 international passengers. Volaris operated three times a week scheduled flights between Reno and Guadalajara, Mexico.

AVERAGE ENPLANED LOAD FACTOR



In November 2016, the average enplaned load factor at RNO was 74.8%, a decrease of 0.3 pts. versus November 2015.

AVERAGE ENPLANED LOAD FACTOR BY AIRLINE

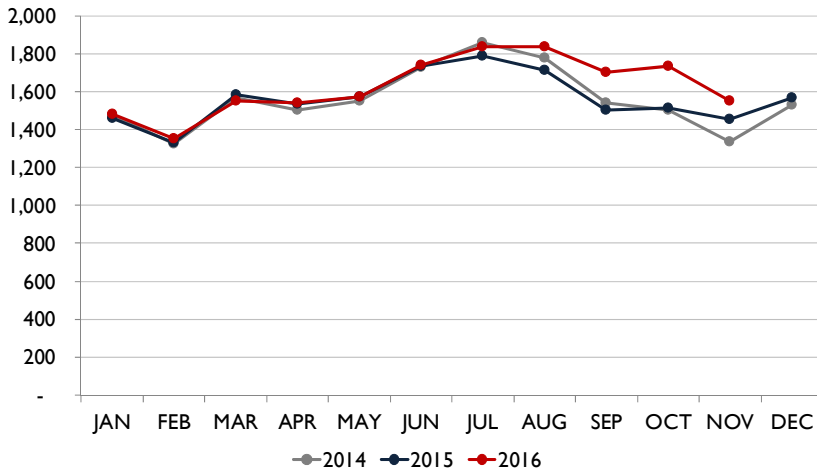


Average Enplaned Load Factor Nov. 2016

Airline	RNO	Network	Difference
Alaska	71.3%	85.1%	(13.8)
Allegiant Air	71.1%	79.9%	(8.8)
American	80.6%	80.9%	(0.3)
Delta	75.6%	85.0%	(9.4)
JetBlue	83.7%	85.4%	(1.7)
Southwest	70.0%	85.1%	(15.1)
United	90.2%	81.8%	8.4
Volaris	72.6%	84.2%	(11.6)

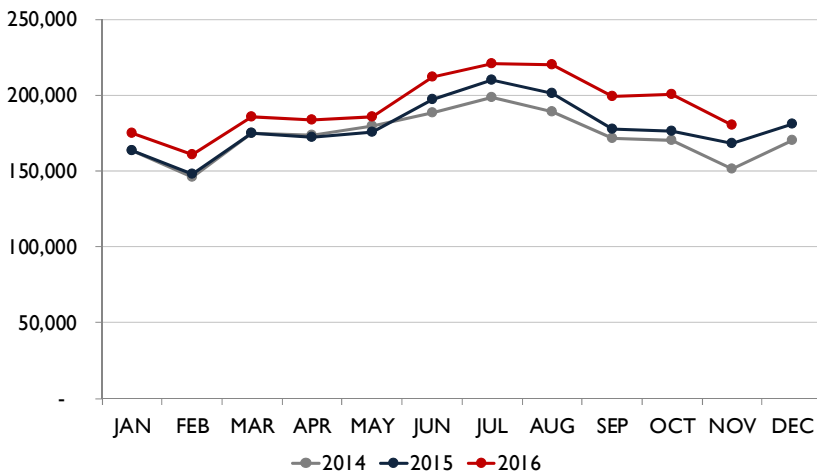


DEPARTURES



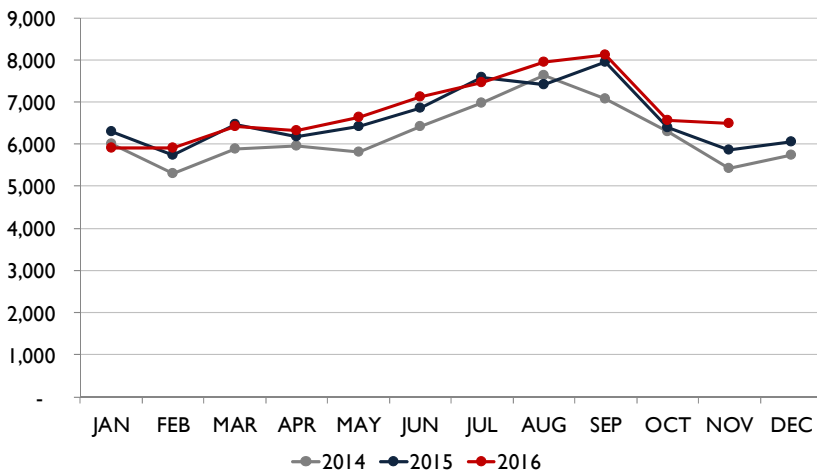
In November 2016, RNO handled 1,545 departures on eight commercial airlines, an increase of 7.1% when compared to November 2015. This doesn't include charter operations on non-incumbent carriers.

DEPARTING SEATS



In November 2016, eight airlines provided 180,411 departing seats, an increase of 7.8% when compared to November 2015. This doesn't include charter operations on non-incumbent carriers.

TOTAL OPERATIONS



A total of 6,481 operations were handled at RNO in November 2016, an increase of 10.4% when compared to November 2015. Total operations include: Air Carrier, Air Taxi, General Aviation and Military operations as reported by the FAA.

Note: graphs on this page show scheduled departures, seats and operations



Recent and Upcoming Schedule Changes

Allegiant Air

- The non-stop flight between Reno and Las Vegas operates on Wednesdays, Fridays and Sundays. The airline will fly an extra flight on this route on Monday, January 2, 2017.
- The non-stop flight between Reno and Los Angeles operates on Thursdays and Sundays. This flight will operate until January 1, 2017.

American Airlines (seasonal reduction)

- American Airlines temporarily suspended the daily non-stop flight between Reno and Chicago O'Hare on November 5, 2016. The flight returned for the winter holidays on December 15, 2016, and will operate through January 8, 2017. The airline resumes the daily schedule on February 16, 2017.

Delta Air Lines (seasonal increase)

- Delta Air Lines will operate daily non-stop flights between Reno and Minneapolis from December 22, 2016, through January 1, 2017. This flight will return during the summer season.

JetBlue Airways

- The non-stop flight between Reno and New York City reduced to a four times a week schedule on September 8, 2016 (Thursday, Friday, Sunday, Monday). The flight returned as a daily service during the winter holidays from December 15, 2016, through January 3, 2017. From January 5, 2017, through February 15, 2017, this flight will operate five days a week (Thursday – Monday), before returning to a daily schedule.

Southwest Airlines (seasonal reduction)

- The daily non-stop flight between Reno and Chicago Midway was temporarily suspended on November 6, 2016. This flight will return on March 9, 2017.

United Airlines (seasonal increase)

- United Airlines will operate daily non-stop flights between Reno and Houston Intercontinental Airport from December 16, 2016, through January 3, 2017. The flight returns as a twice a week service, Saturday and Sunday, on January 7, 2017, and is available through the end of summer.

Volaris

- The non-stop flight between Reno and Guadalajara, Mexico operates on Mondays, Wednesdays and Fridays. The airline increased the frequency on this route to four times a week from December 20, 2016, until January 3, 2017. The fourth weekly flight operates on Tuesdays. In addition, Volaris will offer this flight on Thursday, January 12, 2017.



Reno-Tahoe International Airport

Total Passengers November-16					
	Passengers		% Diff.	Passengers	
	2014	2015		2016	% Diff.
JAN	241,181	246,571	2.2%	259,868	5.4%
FEB	228,035	234,763	3.0%	269,807	14.9%
MAR	278,172	277,477	-0.2%	311,974	12.4%
1st Quarter	747,388	758,811	1.5%	841,649	10.9%
APR	266,800	256,823	-3.7%	273,707	6.6%
MAY	282,277	276,969	-1.9%	288,763	4.3%
JUN	316,720	319,309	0.8%	338,954	6.2%
2nd Quarter	865,797	853,101	-1.5%	901,424	5.7%
JUL	332,242	350,823	5.6%	356,768	1.7%
AUG	318,965	336,948	5.6%	349,934	3.9%
SEP	284,931	297,299	4.3%	325,698	9.6%
3rd Quarter	936,138	985,070	5.2%	1,032,400	4.8%
OCT	266,701	295,749	10.9%	304,447	2.9%
NOV	225,384	253,494	12.5%	270,367	6.7%
DEC	263,682	286,105	8.5%		
4th Quarter	755,767	835,348	10.5%		
TOTAL	3,305,090	3,432,330	3.8%		
YTD Total		3,146,225		3,350,287	6.5%

Total Enplaned Passengers November-16				
Month	2014	2015	2016	% Diff.
JAN	121,700	124,505	130,546	4.9%
FEB	113,777	117,750	133,669	13.5%
MAR	142,542	141,314	156,542	10.8%
APR	132,183	128,088	136,453	6.5%
MAY	139,349	137,132	144,228	5.2%
JUN	158,827	159,989	168,313	5.2%
JUL	162,090	172,266	177,619	3.1%
AUG	159,664	166,935	171,150	2.5%
SEP	147,458	151,127	169,166	11.9%
OCT	134,946	150,567	153,936	2.2%
NOV	112,573	125,712	135,217	7.6%
DEC	128,295	142,253		
TOTAL	1,653,404	1,717,638		
YTD Total		1,575,385	1,676,839	6.4%

Total Deplaned Passengers				
Month	2014	2015	2016	% Diff.
JAN	119,481	122,066	129,322	5.9%
FEB	114,258	117,013	136,138	16.3%
MAR	135,630	136,163	155,432	14.2%
APR	134,617	128,735	137,254	6.6%
MAY	142,928	139,837	144,535	3.4%
JUN	157,893	159,320	170,641	7.1%
JUL	170,152	178,557	179,149	0.3%
AUG	159,301	170,013	178,784	5.2%
SEP	137,473	146,172	156,532	7.1%
OCT	131,755	145,182	150,511	3.7%
NOV	112,811	127,782	135,150	5.8%
DEC	135,387	143,852		
TOTAL	1,651,686	1,714,692		
YTD Total		1,570,840	1,673,448	6.5%

Total Cargo November-16						
	2014	2015	% Diff.	2016		% Diff.
	Cargo in Pounds			Pounds	Metric	
JAN	10,303,380	10,113,421	-1.8%	11,939,003	5,415	18.1%
FEB	9,486,697	9,418,781	-0.7%	10,947,416	4,965	16.2%
MAR	9,758,391	10,381,009	6.4%	13,004,808	5,898	25.3%
1st Quarter	29,548,468	29,913,211	1.2%	35,891,227	16,277	20.0%
APR	9,876,465	10,416,248	5.5%	12,341,233	5,597	18.5%
MAY	10,269,963	10,634,389	3.5%	12,088,321	5,482	13.7%
JUN	9,679,744	10,595,645	9.5%	13,432,224	6,092	26.8%
2nd Quarter	29,826,172	31,646,282	6.1%	37,861,778	17,171	19.6%
JUL	10,863,843	11,775,072	8.4%	12,691,135	5,756	7.8%
AUG	10,853,726	11,031,470	1.6%	13,977,442	6,339	26.7%
SEP	10,127,014	12,360,393	22.1%	13,347,173	6,053	8.0%
3rd Quarter	31,844,583	35,166,935	10.4%	40,015,750	18,148	13.8%
OCT	11,429,538	12,160,586	6.4%	12,305,525	5,581	1.2%
NOV	10,664,398	11,657,012	9.3%	13,089,468	5,936	12.3%
DEC	15,776,084	17,907,699	13.5%			
4th Quarter	37,870,020	41,725,297	10.2%			
TOTAL	129,089,243	138,451,725	7.3%			
YTD Total		120,544,026		139,163,748	63,113	15.4%

Enplaned Passengers & Load Factor				
Airline	Enplaned PAX	Nov-16	Nov-15	Diff.
Alaska/Horizon	16,261	71.3%	68.8%	2.5
Allegiant Air	2,532	71.1%	72.2%	-1.1
American	24,120	80.6%	77.3%	3.3
Delta	9,673	75.6%	80.6%	-5.0
jetBlue	6,188	83.7%	73.7%	10.1
Southwest	59,526	70.0%	73.0%	-3.0
United	14,994	90.2%	88.7%	1.5
Volaris	1,665	72.6%	53.5%	19.1

Source: RNO Monthly Flight Activity Reports

