



# Passenger and Cargo Statistics Report

**Reno-Tahoe International Airport**  
December 2016



**Reno-Tahoe  
Airport Authority**

## U.S. DOMESTIC INDUSTRY OVERVIEW FOR DECEMBER 2016

### All RNO Carriers Domestic Systemwide – year over year comparison

Average Load Factor:	83.6%, down 0.3 pts.
Number of Flights *:	Up 0.1%
Capacity of Seats *:	Up 2.5%
Crude Oil Average:	\$51.97 per barrel in Dec. 2016 vs. \$37.19 per barrel in Dec. 2015

### RNO OVERVIEW FOR DECEMBER 2016 – year over year comparison

Total Passengers:	Up 5.0%
Avg. Enplaned Load Factor:	76.6%, down 3.7 pts.
Actual Departures:	Up 10.7%
Actual Departing Seats:	Up 8.2%
Total Cargo:	Down 3.7%

Source: RNO Monthly Flight Activity Reports; \* INNOVATA Flight Schedule via Diio

## DECEMBER 2016 SUMMARY

Reno-Tahoe International Airport (RNO) served 300,543 passengers in December 2016, which is up 5.0% versus December 2015. The airport experienced positive passenger growth for the 19th consecutive month with respect to the year over year monthly increases. In 2016, RNO served a total of 3,650,830 passengers, an increase of 6.4% when compared to the year 2015, representing the highest year-over-year annual growth since 2004. The 2016 year-over-year passenger increase at RNO is partially attributed to the new flights to Orange County, Oakland, Long Beach and Atlanta.

In December 2016, RNO was served by eight airlines providing 1,693 departures to 21 non-stop destinations (23 non-stop destinations if seasonal and new announced flights are included). At RNO, total seat capacity increased 10.7% and flights increased 8.2% when compared to December 2015.

In December 2016, RNO handled 17,247,162 pounds of air cargo, a decrease of 3.7% versus December 2015. In 2016, RNO handled 156,410,910 pounds of air cargo, an increase of 13.0% when compared to the year 2015. The year 2016 was the best year recorded at RNO in terms of air cargo.

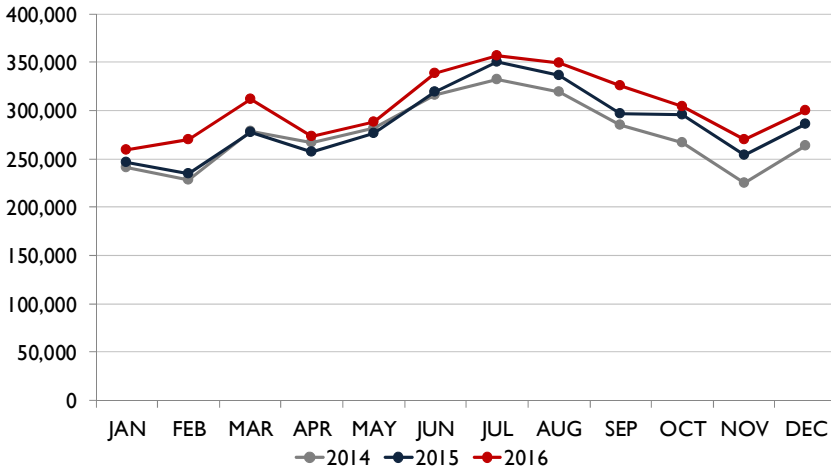
On December 19, 2016, Delta Air Lines began non-stop seasonal flights between RNO and Atlanta International Airport. The flight operates once a week, Saturday arrival and Sunday departure, and will operate until March 26, 2017. The airline is utilizing a 180-seat Boeing 757 on this route.

Southwest Airlines began once a week seasonal non-stop flights between RNO and Dallas Love Field Airport (DAL) on January 7, 2017. Starting March 12, 2017, the airline will increase the number of flights between RNO and DAL from one flight a week to two flights a week. The additional flight will operate on Sundays.



Starting February 5, 2017, Allegiant Air will increase the number of flights between RNO and Las Vegas from three times a week to six times a week. The airline will provide this service from Sunday through Friday.

### PASSENGERS

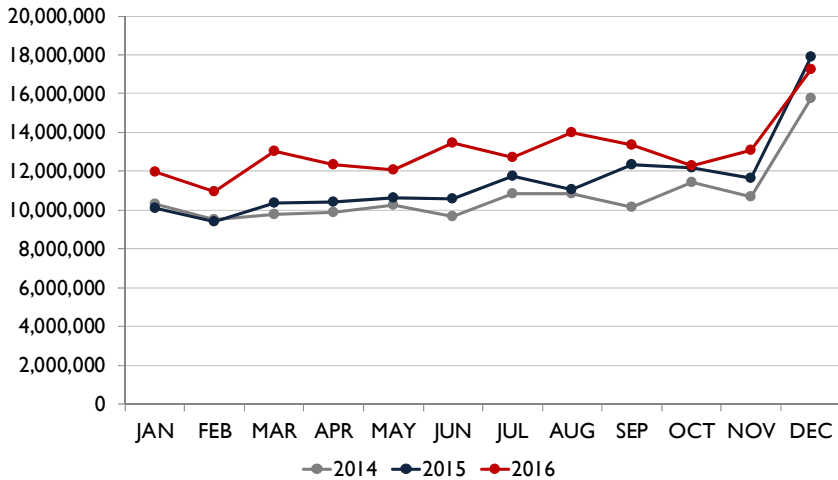


### Passengers

Southwest Airlines, the largest carrier at RNO, served 128,001 passengers during the month of December 2016, up 2.9% when compared to December 2015.

In December 2016, all airlines at RNO reported a year-over-year increase in passenger traffic with the exception of American Airlines. Allegiant Air reported a passenger growth of 119.4% (mainly due to the new flights to Los Angeles), JetBlue was up 64%, Alaska Airlines grew 12.3%, Delta increased 5.8% and United Airlines reported an increase of 1.6% during the same period. Volaris served 4,293 passengers during the month of December 2016, an increase of 13.3% when compared to December 2015.

### CARGO



American Airlines reported a passenger decrease of 5.4% for the same period. This year-over-year decrease was driven by equipment downgauge on the Reno-Phoenix route.

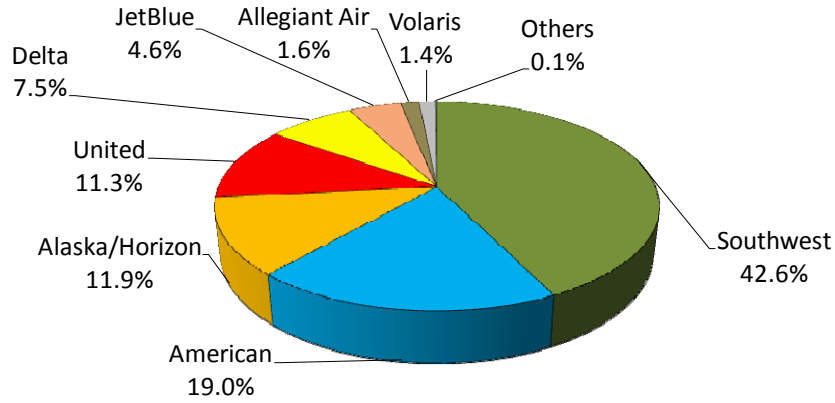
### Cargo

RNO handled 17,247,162 pounds of air cargo in December 2016, representing a year-over-year decrease of 3.7%.

In December 2016, the cargo tonnage of DHL increased 12.9% and FedEx was up 5.6% when compared to December 2015. UPS reported a decrease of 13.5% during the same period.



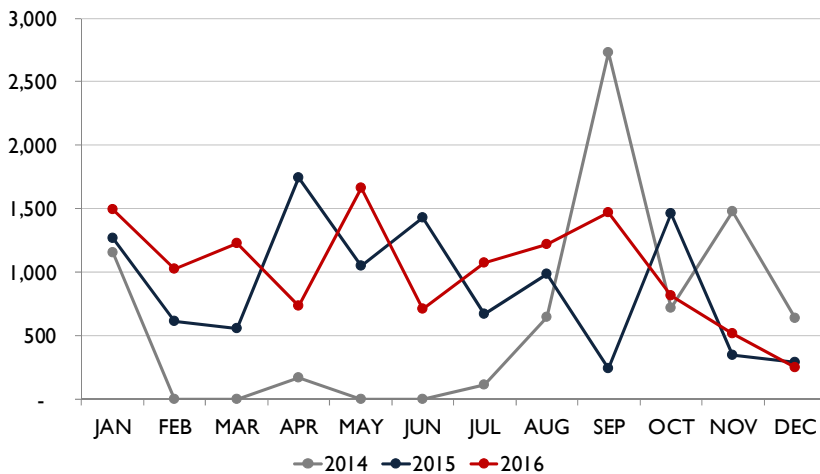
## AIR CARRIER MARKET SHARE (passenger airlines)



	December-16	December-15	YOY Change
Alaska/Horizon	11.9%	11.1%	0.8
Allegiant Air	1.6%	0.8%	0.8
American	19.0%	21.1%	(2.1)
Delta	7.5%	7.5%	0.1
JetBlue	4.6%	2.9%	1.6
Southwest	42.6%	43.5%	(0.9)
United	11.3%	11.7%	(0.4)
Volaris	1.4%	1.3%	0.1
Others	0.1%	0.1%	(0.0)

Note: numbers are rounded up to one decimal figure.

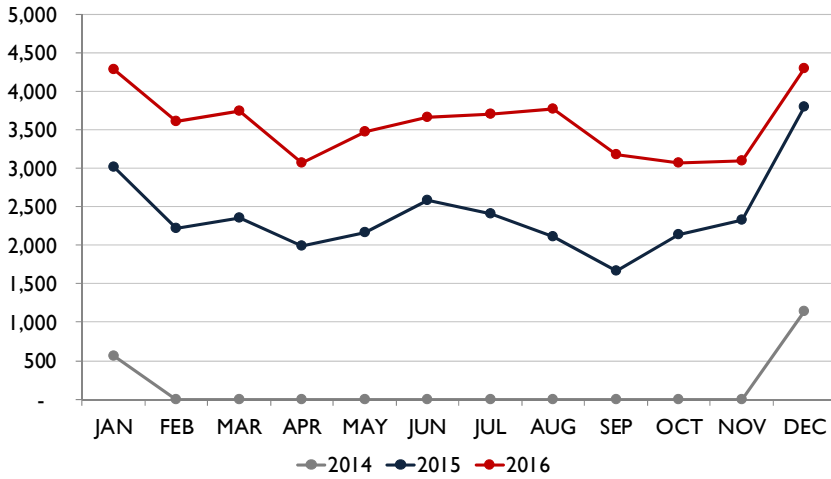
## TOTAL CHARTER PASSENGERS



In December 2016, RNO served 244 charter passengers through the terminal.

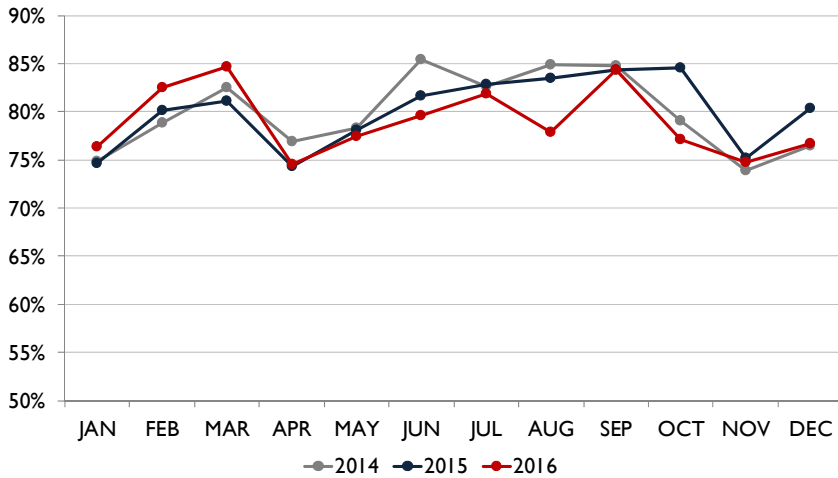


## TOTAL INTERNATIONAL PASSENGERS



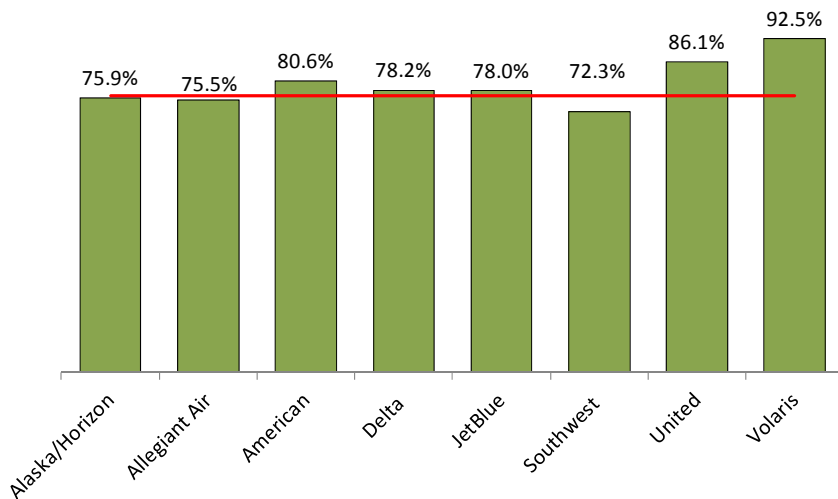
In December 2016, RNO served a total of 4,293 international passengers. Volaris typically operates three times a week scheduled flights between Reno and Guadalajara, Mexico. Due to high demand, Volaris operated two extra flights during the last two weeks of December 2016.

## AVERAGE ENPLANED LOAD FACTOR



In December 2016, the average enplaned load factor at RNO was 76.6%, a decrease of 3.7 pts. versus December 2015.

## AVERAGE ENPLANED LOAD FACTOR BY AIRLINE

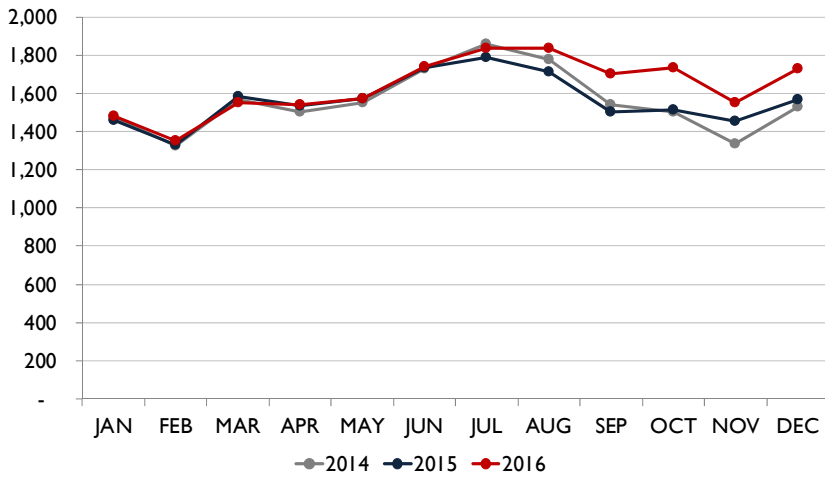


Airline	RNO	Network	Difference
Alaska	75.9%	83.1%	(7.2)
Allegiant Air	75.5%	81.8%	(6.3)
American	80.6%	80.6%	0.0
Delta	78.2%	85.3%	(7.1)
JetBlue	78.0%	84.1%	(6.1)
Southwest	72.3%	82.6%	(10.3)
United	86.1%	83.1%	3.0
Volaris	92.5%	84.1%	8.4

Source: Airline Performance Reports

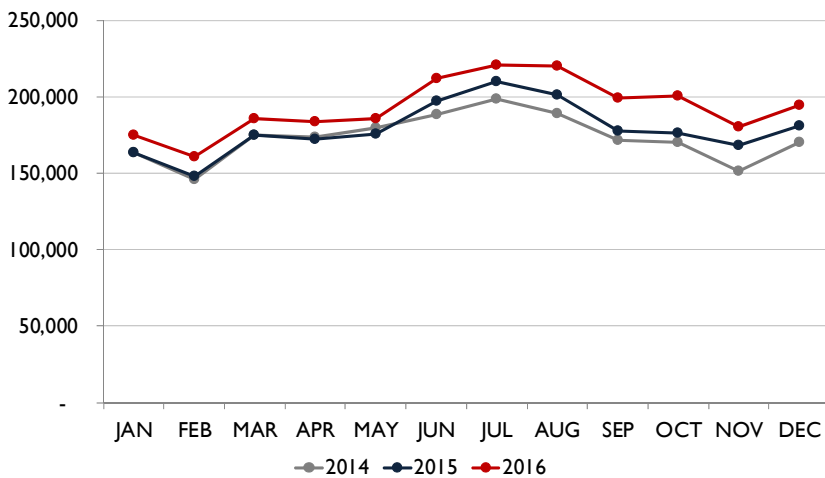


## DEPARTURES



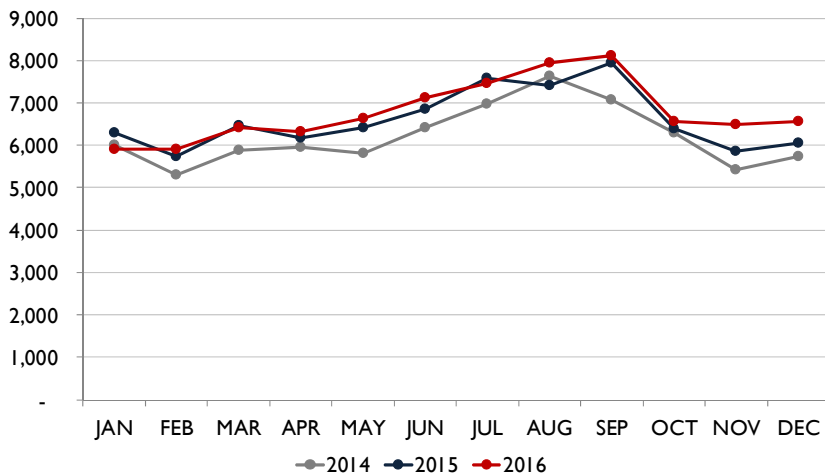
In December 2016, RNO handled 1,693 departures on eight commercial airlines, an increase of 10.7% when compared to December 2015. This doesn't include charter operations on non-incumbent carriers.

## DEPARTING SEATS



In December 2016, eight airlines provided 191,302 departing seats, an increase of 8.2% when compared to December 2015. This doesn't include charter operations on non-incumbent carriers.

## TOTAL OPERATIONS



A total of 6,563 operations were handled at RNO in December 2016, an increase of 8.6% when compared to December 2015. Total operations include: Air Carrier, Air Taxi, General Aviation and Military operations as reported by the FAA.

Note: graphs on this page show scheduled departures, seats and operations



## Recent and Upcoming Schedule Changes

### Allegiant Air

- The non-stop flight between Reno and Las Vegas operates on Wednesdays, Fridays and Sundays.
- The non-stop flight between Reno and Los Angeles operated until January 1, 2017.

### American Airlines

- American Airlines temporarily suspended the daily non-stop flight between Reno and Chicago O'Hare on November 5, 2016. The flight returned for the winter holidays on December 15, 2016, and operated through January 8, 2017. The airline resumes the daily schedule on February 16, 2017.

### Delta Air Lines

- Delta Air Lines operated the daily non-stop seasonal flights between Reno and Minneapolis from December 22, 2016, through January 1, 2017. This flight will return during the summer season.
- Starting January 3, 2017, Delta Air Lines reduced the number of daily non-stop flights between RNO and Salt Lake City from four times a day to three times a day. The airline will return to the four flights a day schedule on March 2, 2017.

### JetBlue Airways

- The non-stop flight between Reno and New York City will operate five days a week (Thursday - Monday) from January 5, 2017, through February 15, 2017, before returning to the daily schedule.

### Southwest Airlines (seasonal reduction)

- The daily non-stop flight between Reno and Chicago Midway was temporarily suspended on November 6, 2016. This flight will return on March 9, 2017.

### United Airlines (seasonal increase)

- United Airlines operated daily non-stop flights between Reno and Houston Intercontinental Airport from December 16, 2016, through January 3, 2017. The flight returned as a twice a week service, Saturday and Sunday, on January 7, 2017, and is available through the end of summer.

### Volaris

- The non-stop flight between Reno and Guadalajara, Mexico operates on Mondays, Wednesdays and Fridays.





# Reno-Tahoe International Airport

Total Passengers December-16					
	Passengers		% Diff.	Passengers	
	2014	2015		2016	% Diff.
JAN	241,181	246,571	2.2%	259,868	5.4%
FEB	228,035	234,763	3.0%	269,807	14.9%
MAR	278,172	277,477	-0.2%	311,974	12.4%
<b>1st Quarter</b>	<b>747,388</b>	<b>758,811</b>	<b>1.5%</b>	<b>841,649</b>	<b>10.9%</b>
APR	266,800	256,823	-3.7%	273,707	6.6%
MAY	282,277	276,969	-1.9%	288,763	4.3%
JUN	316,720	319,309	0.8%	338,954	6.2%
<b>2nd Quarter</b>	<b>865,797</b>	<b>853,101</b>	<b>-1.5%</b>	<b>901,424</b>	<b>5.7%</b>
JUL	332,242	350,823	5.6%	356,768	1.7%
AUG	318,965	336,948	5.6%	349,934	3.9%
SEP	284,931	297,299	4.3%	325,698	9.6%
<b>3rd Quarter</b>	<b>936,138</b>	<b>985,070</b>	<b>5.2%</b>	<b>1,032,400</b>	<b>4.8%</b>
OCT	266,701	295,749	10.9%	304,447	2.9%
NOV	225,384	253,494	12.5%	270,367	6.7%
DEC	263,682	286,105	8.5%	300,543	5.0%
<b>4th Quarter</b>	<b>755,767</b>	<b>835,348</b>	<b>10.5%</b>	<b>875,357</b>	<b>4.8%</b>
<b>TOTAL</b>	<b>3,305,090</b>	<b>3,432,330</b>	<b>3.8%</b>		
<b>YTD Total</b>		<b>3,432,330</b>		<b>3,650,830</b>	<b>6.4%</b>

Total Enplaned Passengers December-16				
Month	2014	2015	2016	% Diff.
JAN	121,700	124,505	130,546	4.9%
FEB	113,777	117,750	133,669	13.5%
MAR	142,542	141,314	156,542	10.8%
APR	132,183	128,088	136,453	6.5%
MAY	139,349	137,132	144,228	5.2%
JUN	158,827	159,989	168,313	5.2%
JUL	162,090	172,266	177,619	3.1%
AUG	159,664	166,935	171,150	2.5%
SEP	147,458	151,127	169,166	11.9%
OCT	134,946	150,567	153,936	2.2%
NOV	112,573	125,712	135,217	7.6%
DEC	128,295	142,253	146,741	3.2%
<b>TOTAL</b>	<b>1,653,404</b>	<b>1,717,638</b>		
<b>YTD Total</b>		<b>1,717,638</b>	<b>1,823,580</b>	<b>6.2%</b>

Total Deplaned Passengers				
Month	2014	2015	2016	% Diff.
JAN	119,481	122,066	129,322	5.9%
FEB	114,258	117,013	136,138	16.3%
MAR	135,630	136,163	155,432	14.2%
APR	134,617	128,735	137,254	6.6%
MAY	142,928	139,837	144,535	3.4%
JUN	157,893	159,320	170,641	7.1%
JUL	170,152	178,557	179,149	0.3%
AUG	159,301	170,013	178,784	5.2%
SEP	137,473	146,172	156,532	7.1%
OCT	131,755	145,182	150,511	3.7%
NOV	112,811	127,782	135,150	5.8%
DEC	135,387	143,852	153,802	6.9%
<b>TOTAL</b>	<b>1,651,686</b>	<b>1,714,692</b>		
<b>YTD Total</b>		<b>1,714,692</b>	<b>1,827,250</b>	<b>6.6%</b>

Total Cargo December-16						
	2014	2015	% Diff.	2016		% Diff.
	Cargo in Pounds			Pounds	Metric	
JAN	10,303,380	10,113,421	-1.8%	11,939,003	5,415	18.1%
FEB	9,486,697	9,418,781	-0.7%	10,947,416	4,965	16.2%
MAR	9,758,391	10,381,009	6.4%	13,004,808	5,898	25.3%
<b>1st Quarter</b>	<b>29,548,468</b>	<b>29,913,211</b>	<b>1.2%</b>	<b>35,891,227</b>	<b>16,277</b>	<b>20.0%</b>
APR	9,876,465	10,416,248	5.5%	12,341,233	5,597	18.5%
MAY	10,269,963	10,634,389	3.5%	12,088,321	5,482	13.7%
JUN	9,679,744	10,595,645	9.5%	13,432,224	6,092	26.8%
<b>2nd Quarter</b>	<b>29,826,172</b>	<b>31,646,282</b>	<b>6.1%</b>	<b>37,861,778</b>	<b>17,171</b>	<b>19.6%</b>
JUL	10,863,843	11,775,072	8.4%	12,691,135	5,756	7.8%
AUG	10,853,726	11,031,470	1.6%	13,977,442	6,339	26.7%
SEP	10,127,014	12,360,393	22.1%	13,347,173	6,053	8.0%
<b>3rd Quarter</b>	<b>31,844,583</b>	<b>35,166,935</b>	<b>10.4%</b>	<b>40,015,750</b>	<b>18,148</b>	<b>13.8%</b>
OCT	11,429,538	12,160,586	6.4%	12,305,525	5,581	1.2%
NOV	10,664,398	11,657,012	9.3%	13,089,468	5,936	12.3%
DEC	15,776,084	17,907,699	13.5%	17,247,162	7,822	-3.7%
<b>4th Quarter</b>	<b>37,870,020</b>	<b>41,725,297</b>	<b>10.2%</b>	<b>42,642,155</b>	<b>19,339</b>	<b>2.2%</b>
<b>TOTAL</b>	<b>129,089,243</b>	<b>138,451,725</b>	<b>7.3%</b>			
<b>YTD Total</b>		<b>138,451,725</b>		<b>156,410,910</b>	<b>70,935</b>	<b>13.0%</b>

Enplaned Passengers & Load Factor				
Airline	Enplaned PAX	Dec-16	Dec-15	Diff.
Alaska/Horizon	17,374	75.9%	71.4%	4.6
Allegiant Air	2,438	75.5%	67.1%	8.4
American	27,598	80.6%	86.4%	-5.7
Delta	11,124	78.2%	77.7%	0.4
jetBlue	6,554	78.0%	87.5%	-9.5
Southwest	62,402	72.3%	78.0%	-5.7
United	16,647	86.1%	88.3%	-2.2
Volaris	2,483	92.5%	95.0%	-2.5

Source: RNO Monthly Flight Activity Reports

