



Passenger and Cargo Statistics Report

Reno-Tahoe International Airport
January 2016



**Reno-Tahoe
Airport Authority**

U.S. DOMESTIC INDUSTRY OVERVIEW FOR JANUARY 2016

All RNO Carriers Domestic Systemwide – year over year comparison

Average Load Factor:	81.3% up 0.6 pts.
Number of Flights *:	Flat
Capacity of Seats *:	Up 2.8%
Crude Oil Average:	\$31.68 per barrel in Jan. 2016 vs. \$47.22 per barrel in Jan. 2015

RNO OVERVIEW FOR JANUARY 2016 – year over year comparison

Total Passengers:	Up 5.4%
Avg. Enplaned Load Factor:	73.6%, up 0.9 pts.
Actual Departures:	Down (2.2%)
Actual Departing Seats:	Up 2.4%
Total Cargo:	Up 18.1%

*Source: RNO Monthly Flight Activity Reports; * INNOVATA Flight Schedule via Diio*

JANUARY 2016 SUMMARY

Reno-Tahoe International Airport (RNO) served 259,868 passengers in January 2016, which is up 5.4% versus January 2015. The rise in passenger traffic can be attributed to the new flights on JetBlue Airways, Alaska Airlines and Volaris, and the increased seat capacity on certain routes. In addition, the growing regional economy continues to play a role to attract travelers to the region.

In January 2016, RNO handled 11,939,003 pounds of cargo, an increase of 18.1% when compared to January 2015. With respect to year-over-year monthly increases, January 2016 is the 11th consecutive month of air cargo growth at RNO. The growth in industrial development areas, such as the Tahoe-Reno Industrial Center, continues to help spur cargo growth and economic diversity in Northern Nevada.

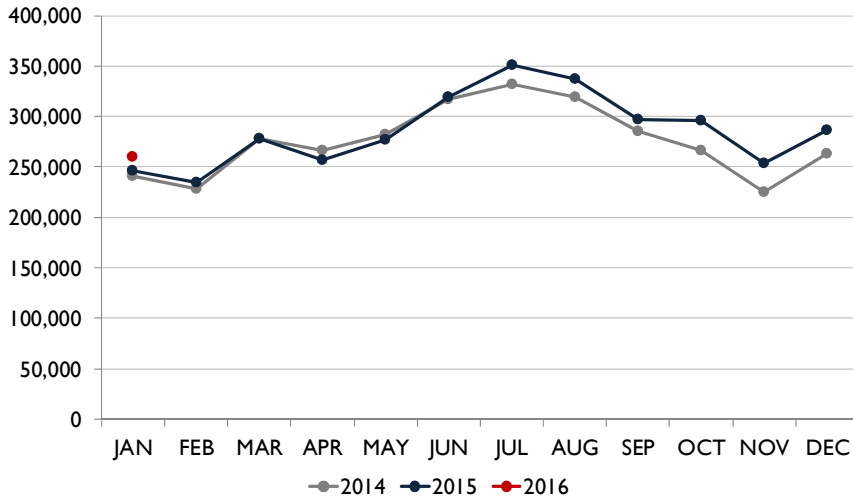
In January 2016, RNO was served by eight airlines providing 51 peak daily departures to 17 non-stop destinations (20 non-stop destinations if seasonal and new announced flights are included). Total departures at RNO were down (4.8%) and the seat capacity increased 2.4% when compared to January 2015.

Starting March 16, 2016, Alaska Airlines will begin non-stop daily flights between RNO and John Wayne Airport, Orange County (SNA). Horizon Air, Alaska's sister carrier, will fly the route with a 76-seat Bombardier Q400 aircraft.

Starting June 5, 2016, Southwest Airlines will begin non-stop flights between Reno and Oakland three times a day. The airline will utilize a 143-seat Boeing 737-700 aircraft on this route.



TOTAL PASSENGERS



TOTAL PASSENGERS

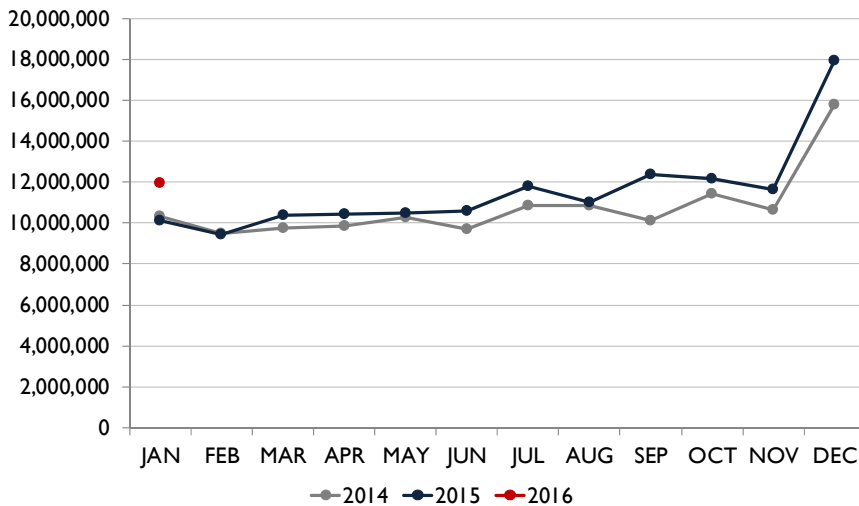
RNO served 259,868 passengers in January 2016, which is up 5.4% when compared to January 2015. With the exception of Allegiant Air, all airlines at RNO reported a year-over-year passenger growth in January 2016. Southwest Airlines, the largest carrier at RNO, carried 105,542 passengers during the month of January 2016, flat, when compared to January 2015.

In January 2016, Alaska Airlines reported a passenger increase of 10.7%, United Airlines grew 8.4%, American Airlines was up 2.8% and Delta Air Lines reported an increase of 2.6% when compared to the same period last year.

Allegiant Air's passenger traffic declined (37.1%) during the same period.

Volaris carried 3,651 international passengers during the month of January 2016, an increase of 53.6% when compared to the same period last year.

TOTAL CARGO

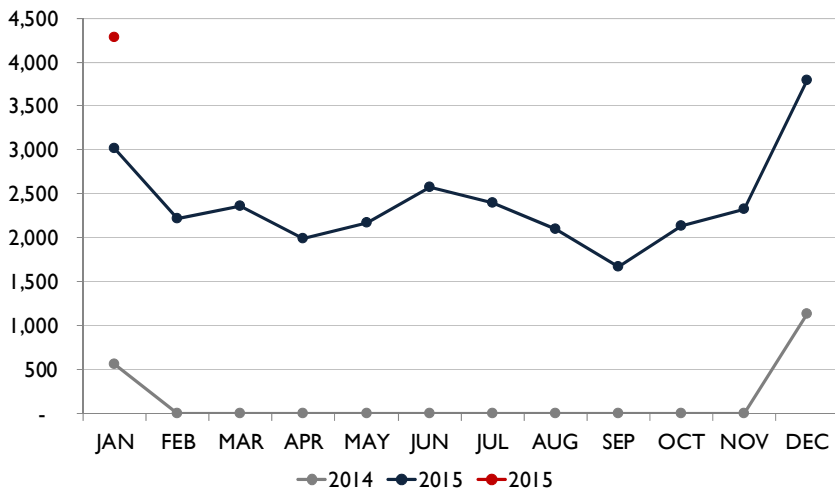


TOTAL CARGO

In January 2016, RNO handled 11,939,003 pounds of air cargo, an increase of 18.1% versus January 2015. The cargo tonnage of DHL increased 52.5%, UPS was up 23.7% and FedEx reported an increase of 15.8% during the same period.



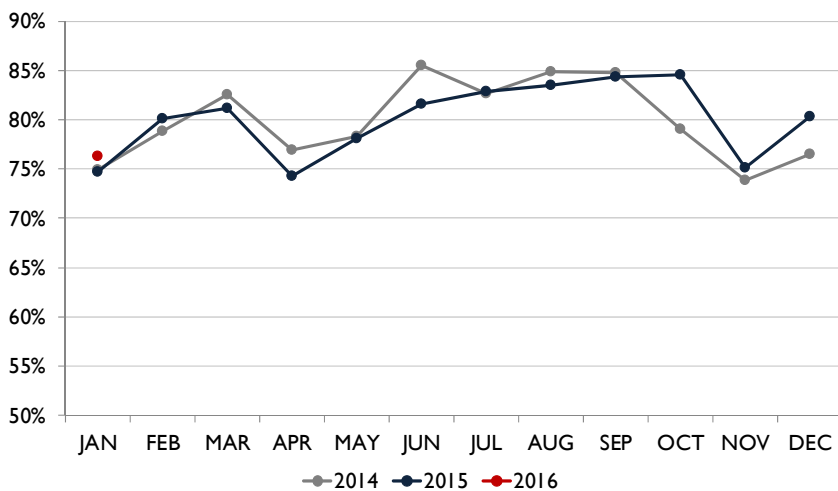
TOTAL INTERNATIONAL PASSENGERS



TOTAL INTERNATIONAL PASSENGERS

In January 2016, RNO served a total of 4,284 international passengers. Volaris operated three times a week scheduled flights to Guadalajara, Mexico. In addition, Sun Country Airlines operated international charter flights to Mexico during the month of January 2016.

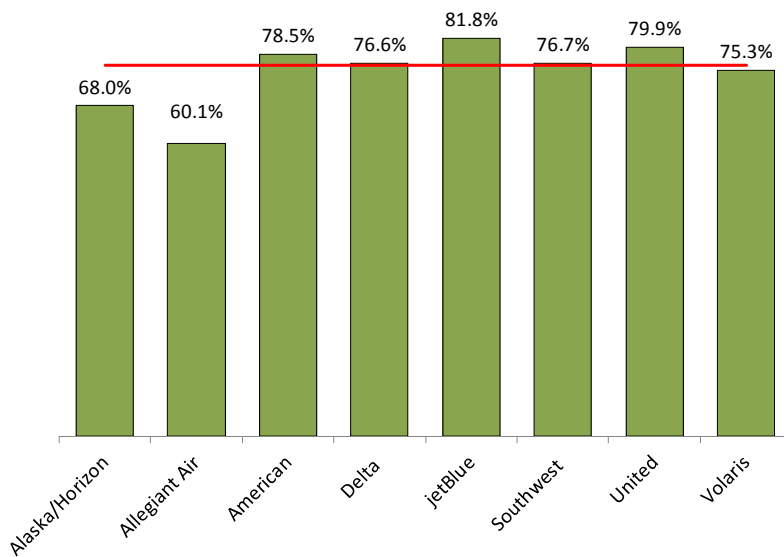
AVERAGE ENPLANED LOAD FACTOR



AVERAGE ENPLANED LOAD FACTOR

In January 2016, the average enplaned load factor at RNO was 73.6%, an increase of 0.9 pts. versus January 2015.

AVERAGE ENPLANED LOAD FACTOR BY AIRLINE



Enplaned Load Factors January 2016			
Airline	RNO	Network	Difference
Alaska	68.0%	79.1%	(11.1)
Allegiant Air	60.1%	82.2%	(22.1)
American	78.5%	79.7%	(1.2)
Delta	76.6%	81.3%	(4.7)
jetBlue	81.8%	82.6%	(0.8)
Southwest	76.7%	77.5%	(0.8)
United	79.9%	80.9%	(1.0)
Volaris	75.3%		n/a

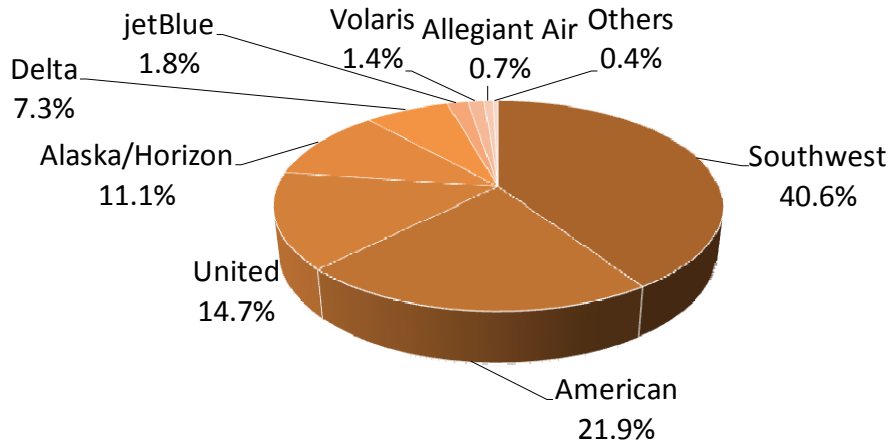
Source: Airline Performance Reports



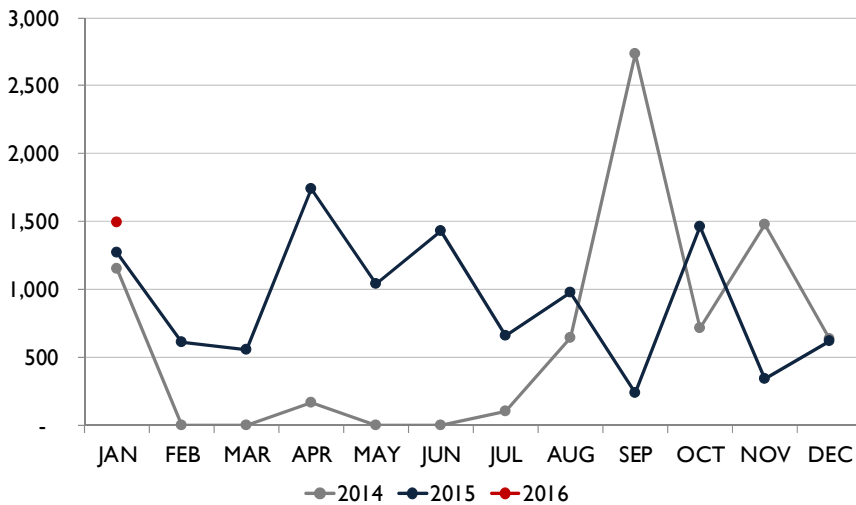
AIR CARRIER MARKET SHARE

	January-16	January-15	YOY Change
Alaska/Horizon	11.1%	10.6%	0.5
Allegiant Air	0.7%	1.2%	(0.5)
American	21.9%	22.5%	(0.6)
Delta	7.3%	7.5%	(0.2)
jetBlue	1.8%	n/a	n/a
Southwest	40.6%	42.7%	(2.1)
United	14.7%	14.3%	0.4
Volaris	1.4%	1.0%	0.4
Others	0.4%	0.3%	0.2

AIR CARRIER MARKET SHARE



TOTAL CHARTER PASSENGERS

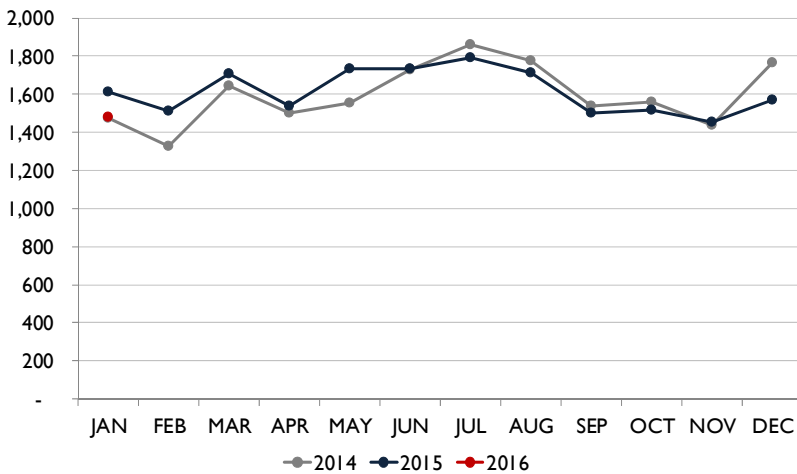


TOTAL CHARTER PASSENGERS

In January 2016, RNO served 1,496 charter passengers through the terminal. A total of 10 charter operations occurred during the month of January 2016.



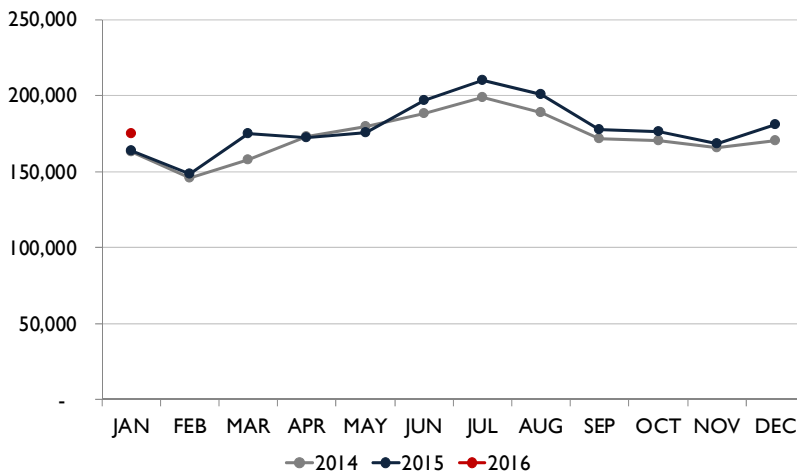
MONTHLY SCHEDULED DEPARTURES



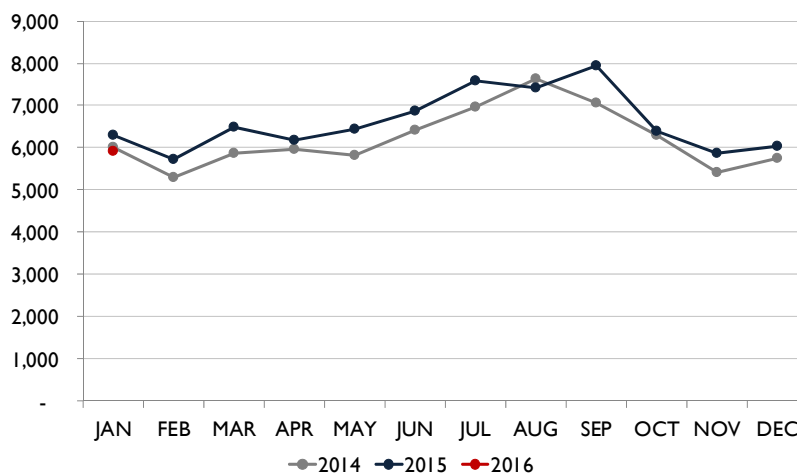
TOTAL DEPARTURES & SEATS

In January 2016, RNO handled 1,440 departures on eight commercial airlines, a decrease of (2.2%) when compared to January 2015. The number of seats were up 2.4% for the same period.

MONTHLY SCHEDULED SEATS



TOTAL OPERATIONS



TOTAL OPERATIONS

A total of 5,905 operations occurred at RNO in January 2016, a decrease of (6.3%) when compared to January 2015. Total operations include: Air Carrier, Air Taxi, General Aviation and Military operations as reported by the FAA.



Recent and Upcoming Schedule Changes

Alaska Airlines (AS)

- Starting March 13, 2016, the new schedule for non-stop flights between RNO and Boise is as follows:
 - Boise to Reno:
 - AS2157 9:25AM-9:42AM
 - Reno to Boise:
 - AS2164 4:35PM-6:58PM
- Starting March 13, 2016, the new schedule for non-stop flights between RNO and San Jose is as follows:
 - San Jose to Reno:
 - AS2250 7:35AM-8:31AM
 - AS2017 6:15PM-7:11PM
 - Reno to San Jose:
 - AS2183 6:00AM-6:57AM
 - AS2320 5:50PM-6:46PM
- Starting March 16, 2016, Alaska Airlines will begin non-stop flights between RNO and Orange County
 - Orange County to Reno:
 - AS2700 2:45PM-4:05PM
 - Reno to Orange County:
 - AS2701 10:15AM-11:37AM

United Airlines (UA)

- The twice a week seasonal non-stop flight between Reno and Houston will operate until April 3, 2016. This flight will return on June 11, 2016. This flight operates on Saturdays and Sundays.

Southwest Airlines (WN)

- Starting March 10, 2016, Southwest Airlines will increase the number of non-stop flights between Reno and Denver from one flight a day to twice a day.
- Starting March 10, 2016, Southwest Airlines will increase the number of non-stop flights between Reno and Los Angeles from twice a day to three times a day.
- The seasonal daily non-stop flight between Reno and Chicago Midway resumes service on March 10, 2016, and will operate through the end of October.
- Starting June 5, 2016, WN will offer non-stop flights between RNO and Oakland
 - Oakland to Reno:
 - WN553 10:50AM-11:40AM
 - WN2867 3:50PM-4:40PM
 - WN480 8:45PM-9:35PM
 - Reno to Oakland:
 - WN3185 6:10AM-7:15AM
 - WN1140 9:30AM-10:35AM
 - WN3505 5:35PM-6:40PM



Reno-Tahoe International Airport

Total Passengers January-16					
	Passengers		% Diff.	Passengers	
	2014	2015		2016	% Diff.
JAN	241,181	246,571	2.2%	259,868	5.4%
FEB	228,035	234,763	3.0%		
MAR	278,172	277,477	-0.2%		
1st Quarter	747,388	758,811	1.5%		
APR	266,800	256,823	-3.7%		
MAY	282,277	276,969	-1.9%		
JUN	316,720	319,309	0.8%		
2nd Quarter	865,797	853,101	-1.5%		
JUL	332,242	350,823	5.6%		
AUG	318,965	336,948	5.6%		
SEP	284,931	297,299	4.3%		
3rd Quarter	936,138	985,070	5.2%		
OCT	266,701	295,749	10.9%		
NOV	225,384	253,494	12.5%		
DEC	263,682	286,432	8.6%		
4th Quarter	755,767	835,675	10.6%		
TOTAL	3,305,090	3,432,657	3.9%		
YTD Total		246,571		259,868	5.4%

Total Enplaned Passengers January-16				
Month	2014	2015	2016	% Diff.
JAN	121,700	124,505	130,546	4.9%
FEB	113,777	117,750		
MAR	142,542	141,314		
APR	132,183	128,088		
MAY	139,349	137,132		
JUN	158,827	159,989		
JUL	162,090	172,266		
AUG	159,664	166,935		
SEP	147,458	151,127		
OCT	134,946	150,567		
NOV	112,573	125,712		
DEC	128,295	142,423		
TOTAL	1,653,404	1,717,808		
YTD Total		124,505	130,546	4.9%

Total Deplaned Passengers				
Month	2014	2015	2016	% Diff.
JAN	119,481	122,066	129,322	5.9%
FEB	114,258	117,013		
MAR	135,630	136,163		
APR	134,617	128,735		
MAY	142,928	139,837		
JUN	157,893	159,320		
JUL	170,152	178,557		
AUG	159,307	170,013		
SEP	137,480	146,172		
OCT	131,755	145,182		
NOV	112,811	127,782		
DEC	135,387	144,009		
TOTAL	1,651,699	1,714,849		
YTD Total		122,066	129,322	5.9%

Total Cargo January-16						
	2014	2015	% Diff.	2016		% Diff.
	Cargo in Pounds			Pounds	Metric	
JAN	10,303,380	10,113,421	-1.8%	11,939,003	5,415	18.1%
FEB	9,486,697	9,418,781	-0.7%			
MAR	9,758,391	10,381,009	6.4%			
1st Quarter	29,548,468	29,913,211	1.2%			
APR	9,876,465	10,416,248	5.5%			
MAY	10,269,963	10,459,643	1.8%			
JUN	9,679,744	10,595,645	9.5%			
2nd Quarter	29,826,172	31,471,536	5.5%			
JUL	10,863,843	11,775,072	8.4%			
AUG	10,853,726	11,031,470	1.6%			
SEP	10,127,014	12,360,393	22.1%			
3rd Quarter	31,844,583	35,166,935	10.4%			
OCT	11,429,538	12,160,586	6.4%			
NOV	10,664,398	11,657,012	9.3%			
DEC	15,776,073	17,907,699	13.5%			
4th Quarter	37,870,009	41,725,297	10.2%			
TOTAL	129,089,232	138,276,979	7.1%			
YTD Total		10,113,421		11,939,003	5,415	18.1%

Enplaned Passengers & Load Factor				
Airline	Enplaned PAX	Jan-16	Jan-15	Diff.
Alaska/Horizon	14,928	68.0%	66.8%	1.2
Allegiant Air	898	60.1%	68.4%	-8.3
American	28,388	78.5%	81.6%	-3.1
Delta	9,159	76.6%	65.6%	11.1
jetBlue	2,209	81.8%	n/a	n/a
Southwest	53,871	76.7%	71.8%	4.9
United	18,957	79.9%	86.8%	-6.9
US Airways	0	n/a	84.0%	n/a
Volaris	1,617	75.3%	67.0%	8.3

Source: RNO Monthly Flight Activity Reports

