



# Passenger and Cargo Statistics Report

**Reno-Tahoe International Airport**  
February 2016



**Reno-Tahoe  
Airport Authority**

## U.S. DOMESTIC INDUSTRY OVERVIEW FOR FEBRUARY 2016

### All RNO Carriers Domestic Systemwide – year over year comparison

Average Load Factor:	81.6% down (1.8) pts.
Number of Flights *:	Up 3.9%
Capacity of Seats *:	Up 6.9%
Crude Oil Average:	\$30.32 per barrel in Feb. 2016 vs. \$50.58 per barrel in Feb. 2015

### RNO OVERVIEW FOR FEBRUARY 2016 – year over year comparison

Total Passengers:	Up 14.9%
Avg. Enplaned Load Factor:	82.5%, up 2.4 pts.
Actual Departures:	Up 3.1%
Actual Departing Seats:	Up 9.8%
Total Cargo:	Up 16.2%

Source: RNO Monthly Flight Activity Reports; \* INNOVATA Flight Schedule via Diio

## FEBRUARY 2016 SUMMARY

Reno-Tahoe International Airport (RNO) served 269,807 passengers in February 2016, which is up 14.9% versus February 2015. During the first two months of 2016, RNO served 529,675 passengers, representing an increase of 10% when compared to the same period last year. In addition to the new flights and added capacity on certain routes, the peak season snow in the Sierras, attracting ski traffic, attributed to the YOY passenger growth.

In February 2016, RNO handled 10,947,416 pounds of cargo, an increase of 16.2% when compared to February 2015. With respect to year-over-year monthly increases, February 2016 is the 12th consecutive month of air cargo growth at RNO. During the first two months of 2016, RNO handled 22,886,419 pounds of cargo, representing an increase of 17.2% when compared to the same period last year.

In February 2016, RNO was served by eight airlines providing 50 peak daily departures to 16 non-stop destinations (21 non-stop destinations if seasonal and new announced flights are included). At RNO, total departures were up 3.1% and the seat capacity increased 9.8% when compared to February 2015.

Starting August 15, 2016, JetBlue Airways will begin non-stop flights between Reno and Long Beach Airport, providing both business and leisure travelers another option for travel between Reno and the Los Angeles basin. The airline will fly the route with a 150-seat Airbus 320. It will depart Reno at 2:15 p.m. and arrive in Long Beach at 3:40 p.m. It will depart Long Beach at 12:15 p.m. and land in Reno at 1:30 p.m.

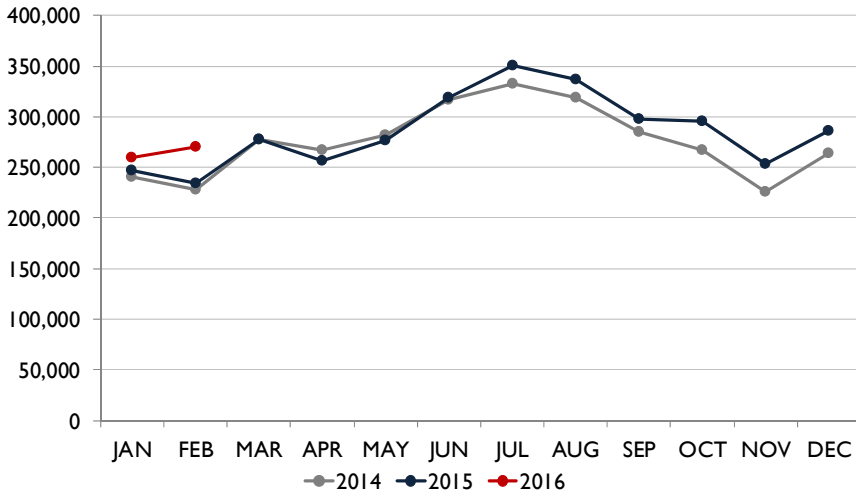


Starting June 5, 2016, Southwest Airlines will begin non-stop flights between RNO and Oakland International Airport three times a day. The airline will utilize a 143-seat Boeing 737-700 aircraft on this route.

Starting June 9, 2016, Allegiant Air will begin non-stop flights between RNO and Los Angeles International Airport twice a week. The airline will provide this service on Thursdays and Sundays.

On March 16, 2016, Alaska Airlines began non-stop daily flights between RNO and John Wayne Airport, Orange County (SNA), utilizing a 76-seat Bombardier Q400 aircraft.

### TOTAL PASSENGERS



### TOTAL PASSENGERS

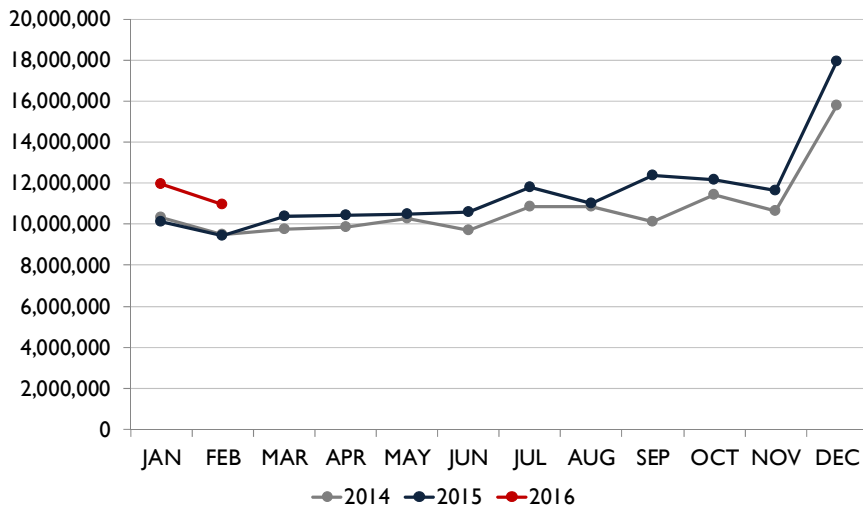
RNO served 269,807 passengers in February 2016, which is up 14.9% when compared to February 2015. All airlines at RNO, with the exception of Allegiant Air, reported a year-over-year passenger growth in February 2016. Southwest Airlines, the largest carrier at RNO, carried 110,903 passengers during the month of February 2016, an increase of 8.8% when compared to February 2015.

In February 2016, Alaska Airlines reported a passenger increase of 20.4%, United Airlines grew 17.5%, Delta Air Lines was up 12.1% and American Airlines reported an increase of 7.5% when compared to the same period last year.

Allegiant Air's passenger traffic declined (5.9%) during the same period.

Volaris carried 3,600 international passengers during the month of February 2016, an increase of 62.1% when compared to the same period last year.

### TOTAL CARGO

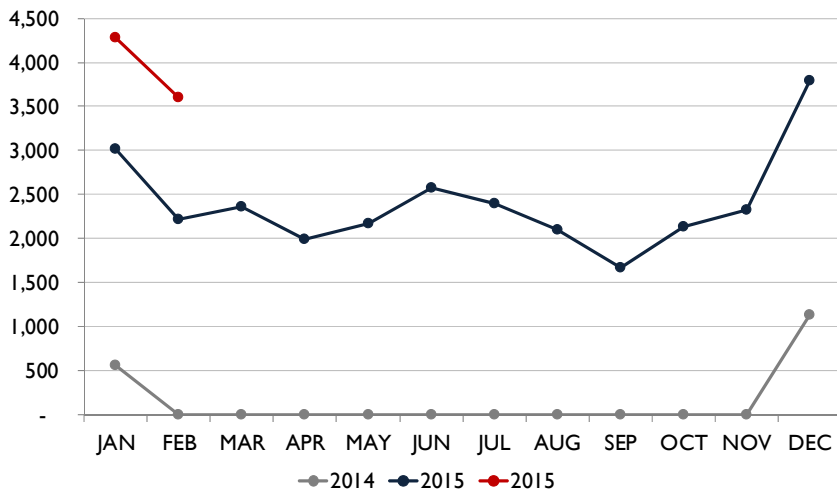


### TOTAL CARGO

In February 2016, RNO handled 10,947,416 pounds of air cargo, an increase of 16.2% versus February 2015. The cargo tonnage of DHL increased 85.8%, UPS was up 34.5% and FedEx reported an increase of 8.3% during the same period.



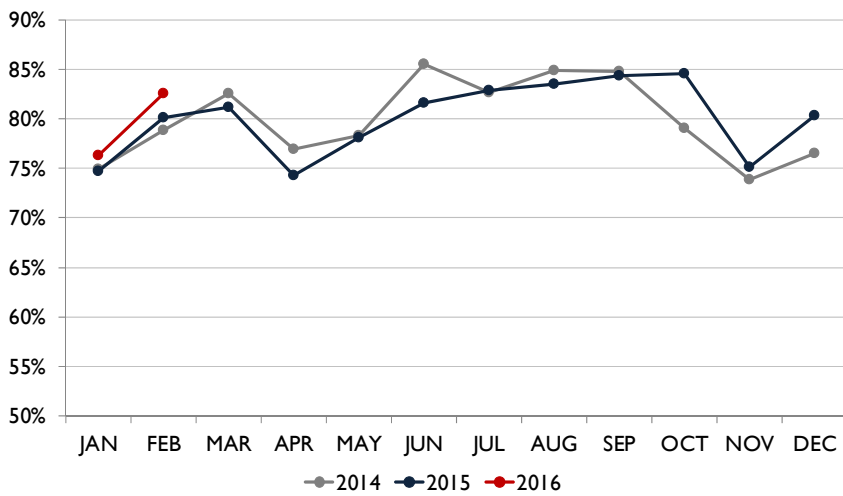
## TOTAL INTERNATIONAL PASSENGERS



## TOTAL INTERNATIONAL PASSENGERS

In February 2016, RNO served a total of 3,600 international passengers. Volaris operated three times a week scheduled flights to Guadalajara, Mexico.

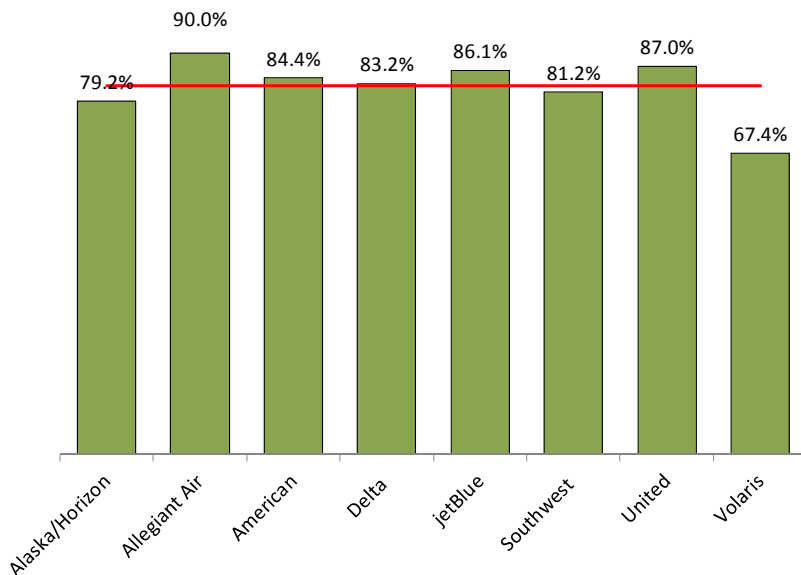
## AVERAGE ENPLANED LOAD FACTOR



## AVERAGE ENPLANED LOAD FACTOR

In February 2016, the average enplaned load factor at RNO was 82.5%, an increase of 2.4 pts. versus February 2015.

## AVERAGE ENPLANED LOAD FACTOR BY AIRLINE



Enplaned Load Factors February 2016			
Airline	RNO	Network	Difference
Alaska	79.2%	80.4%	(1.2)
Allegiant Air	90.0%	85.5%	4.5
American	84.4%	77.0%	7.4
Delta	83.2%	79.7%	3.5
jetBlue	86.1%	83.1%	3.0
Southwest	81.2%	79.0%	2.2
United	87.0%	77.0%	10.0
Volaris	67.4%		n/a

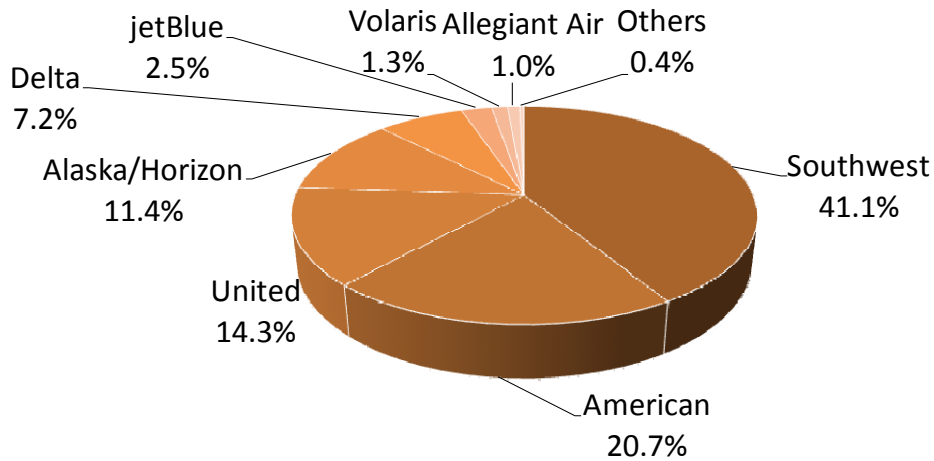
Source: Airline Performance Reports



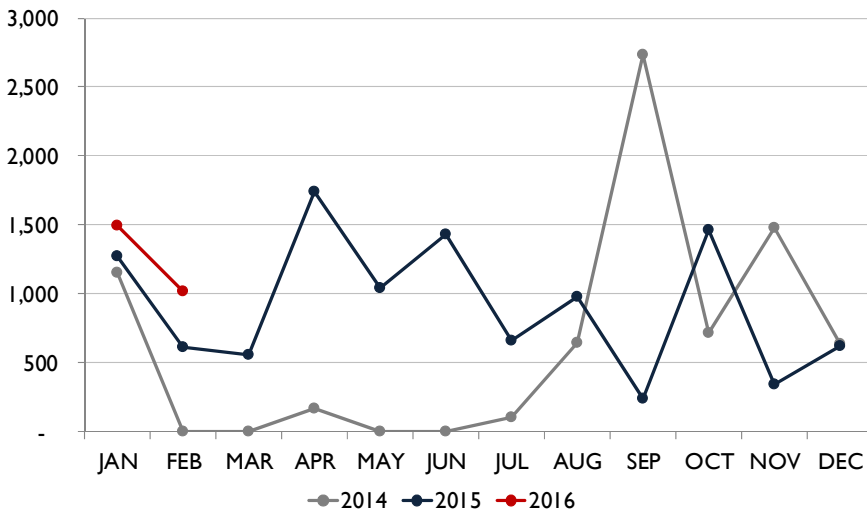
### AIR CARRIER MARKET SHARE

	February-16	February-15	YOY Change
Alaska/Horizon	11.4%	10.9%	0.5
Allegiant Air	1.0%	1.2%	(0.2)
American	20.7%	22.2%	(1.4)
Delta	7.2%	7.4%	(0.2)
jetBlue	2.5%	n/a	n/a
Southwest	41.1%	43.4%	(2.3)
United	14.3%	14.0%	0.3
Volaris	1.3%	0.9%	0.4
Others	0.4%	0.0%	0.4

### AIR CARRIER MARKET SHARE



### TOTAL CHARTER PASSENGERS

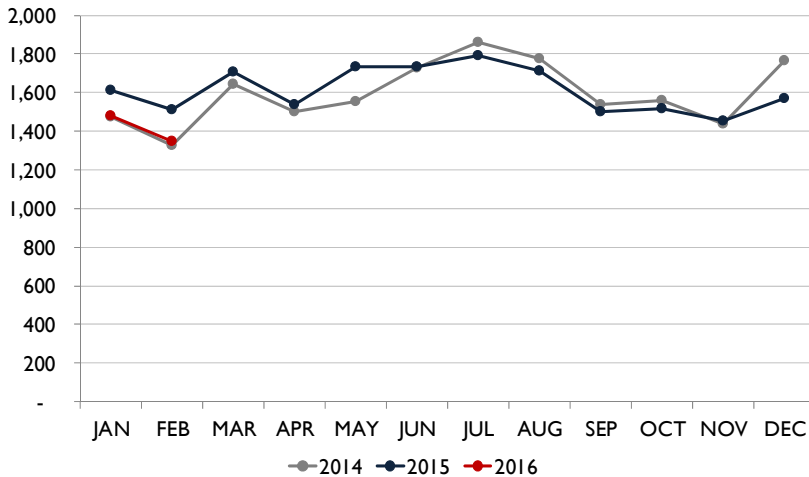


### TOTAL CHARTER PASSENGERS

In February 2016, RNO served 1,022 charter passengers through the terminal. A total of eight charter operations occurred during the month of February 2016.



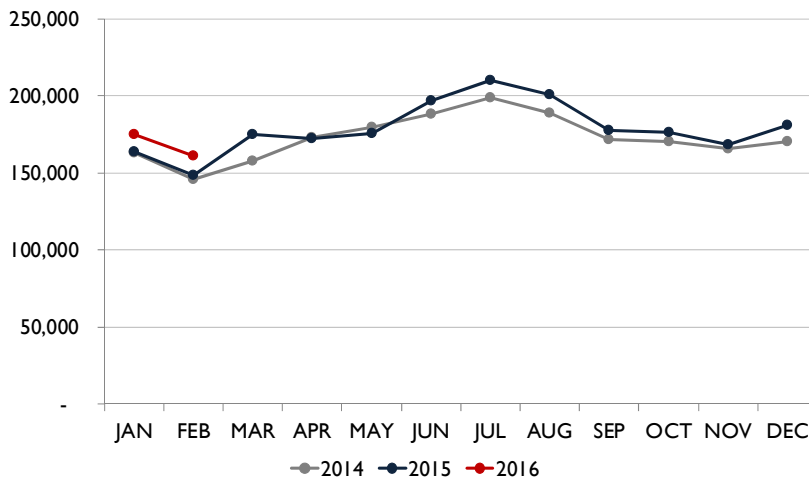
### MONTHLY SCHEDULED DEPARTURES



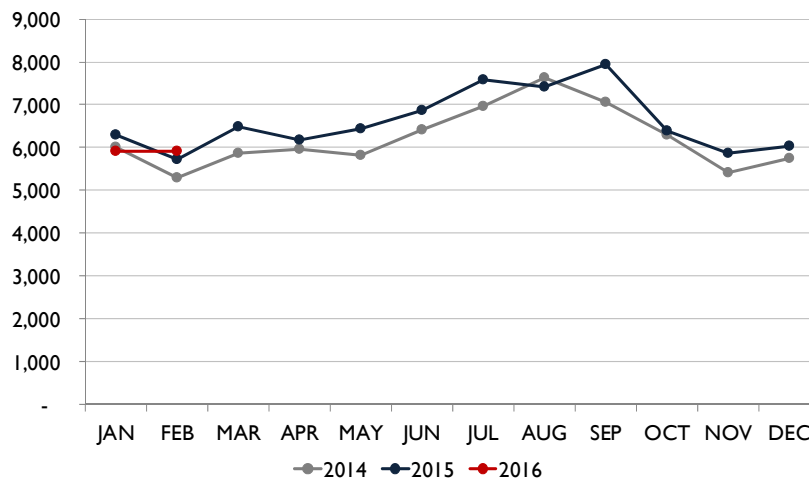
### TOTAL DEPARTURES & SEATS

In February 2016, RNO handled 1,354 departures on eight commercial airlines, an increase of 3.1% when compared to February 2015. The number of seats were up 9.8% for the same period.

### MONTHLY SCHEDULED SEATS



### TOTAL OPERATIONS



### TOTAL OPERATIONS

A total of 5,912 operations occurred at RNO in February 2016, an increase of 3.2% when compared to February 2015. Total operations include: Air Carrier, Air Taxi, General Aviation and Military operations as reported by the FAA.



## Recent and Upcoming Schedule Changes

### Alaska Airlines (AS)

- Starting March 13, 2016, the new schedule for non-stop flights between RNO and Boise was as follows:
  - Boise to Reno:
    - AS2157 9:25AM-9:42AM
  - Reno to Boise:
    - AS2164 4:35PM-6:58PM
- Starting March 13, 2016, the new schedule for non-stop flights between RNO and San Jose was as follows:
  - San Jose to Reno:
    - AS2250 7:35AM-8:30AM
    - AS2017 6:15PM-7:10PM
  - Reno to San Jose:
    - AS2183 6:00AM-6:55AM
    - AS2320 5:50PM-6:44PM
- Starting March 16, 2016, Alaska Airlines began non-stop flights between RNO and Orange County
  - Orange County to Reno:
    - AS2700 2:45PM-4:05PM
  - Reno to Orange County:
    - AS2701 10:15AM-11:37AM

### JetBlue Airways

- The non-stop flight between Reno and New York City will operate daily until May 3, 2016. The flight reduces to four-times a week schedule from May 4 through May 21 (Thursday, Friday, Sunday, Monday) before returning to the full seven days a week schedule.

### United Airlines (UA)

- The twice a week seasonal non-stop flight between Reno and Houston operated until April 3, 2016. This flight will return on June 11, 2016, for the summer season and will operate on Saturdays and Sundays only.

### Southwest Airlines (WN)

- The seasonal daily non-stop flight between Reno and Chicago Midway resumed service on March 10, 2016, and will operate through the end of October.
- Starting June 5, 2016, WN will offer non-stop flights between RNO and Oakland
  - Oakland to Reno:
    - WN553 10:50AM-11:40AM
    - WN2867 4:10PM-5:00PM
    - WN480 8:45PM-9:35PM
  - Reno to Oakland:
    - WN3185 6:10AM-7:15AM
    - WN1140 9:30AM-10:35AM
    - WN3505 5:35PM-6:40PM



# Reno-Tahoe International Airport

Total Passengers February-16					
	Passengers		% Diff.	Passengers	
	2014	2015		2016	% Diff.
JAN	241,181	246,571	2.2%	259,868	5.4%
FEB	228,035	234,763	3.0%	269,807	14.9%
MAR	278,172	277,477	-0.2%		
<b>1st Quarter</b>	<b>747,388</b>	<b>758,811</b>	<b>1.5%</b>		
APR	266,800	256,823	-3.7%		
MAY	282,277	276,969	-1.9%		
JUN	316,720	319,309	0.8%		
<b>2nd Quarter</b>	<b>865,797</b>	<b>853,101</b>	<b>-1.5%</b>		
JUL	332,242	350,823	5.6%		
AUG	318,965	336,948	5.6%		
SEP	284,931	297,299	4.3%		
<b>3rd Quarter</b>	<b>936,138</b>	<b>985,070</b>	<b>5.2%</b>		
OCT	266,701	295,749	10.9%		
NOV	225,384	253,494	12.5%		
DEC	263,682	286,432	8.6%		
<b>4th Quarter</b>	<b>755,767</b>	<b>835,675</b>	<b>10.6%</b>		
<b>TOTAL</b>	<b>3,305,090</b>	<b>3,432,657</b>	<b>3.9%</b>		
<b>YTD Total</b>		481,334		529,675	10.0%

Total Cargo February-16						
	2014	2015	% Diff.	2016		% Diff.
	Cargo in Pounds			Pounds	Metric	
JAN	10,303,380	10,113,421	-1.8%	11,939,003	5,415	18.1%
FEB	9,486,697	9,418,781	-0.7%	10,947,416	4,965	16.2%
MAR	9,758,391	10,381,009	6.4%			
<b>1st Quarter</b>	<b>29,548,468</b>	<b>29,913,211</b>	<b>1.2%</b>			
APR	9,876,465	10,416,248	5.5%			
MAY	10,269,963	10,459,643	1.8%			
JUN	9,679,744	10,595,645	9.5%			
<b>2nd Quarter</b>	<b>29,826,172</b>	<b>31,471,536</b>	<b>5.5%</b>			
JUL	10,863,843	11,775,072	8.4%			
AUG	10,853,726	11,031,470	1.6%			
SEP	10,127,014	12,360,393	22.1%			
<b>3rd Quarter</b>	<b>31,844,583</b>	<b>35,166,935</b>	<b>10.4%</b>			
OCT	11,429,538	12,160,586	6.4%			
NOV	10,664,398	11,657,012	9.3%			
DEC	15,776,073	17,907,699	13.5%			
<b>4th Quarter</b>	<b>37,870,009</b>	<b>41,725,297</b>	<b>10.2%</b>			
<b>TOTAL</b>	<b>129,089,232</b>	<b>138,276,979</b>	<b>7.1%</b>			
<b>YTD Total</b>		19,532,202		22,886,419	10,379	17.2%

Total Enplaned Passengers February-16				
Month	2014	2015	2016	% Diff.
JAN	121,700	124,505	130,546	4.9%
FEB	113,777	117,750	133,669	13.5%
MAR	142,542	141,314		
APR	132,183	128,088		
MAY	139,349	137,132		
JUN	158,827	159,989		
JUL	162,090	172,266		
AUG	159,664	166,935		
SEP	147,458	151,127		
OCT	134,946	150,567		
NOV	112,573	125,712		
DEC	128,295	142,423		
<b>TOTAL</b>	<b>1,653,404</b>	<b>1,717,808</b>		
<b>YTD Total</b>		242,255	264,215	9.1%

Total Deplaned Passengers				
Month	2014	2015	2016	% Diff.
JAN	119,481	122,066	129,322	5.9%
FEB	114,258	117,013	136,138	16.3%
MAR	135,630	136,163		
APR	134,617	128,735		
MAY	142,928	139,837		
JUN	157,893	159,320		
JUL	170,152	178,557		
AUG	159,307	170,013		
SEP	137,480	146,172		
OCT	131,755	145,182		
NOV	112,811	127,782		
DEC	135,387	144,009		
<b>TOTAL</b>	<b>1,651,699</b>	<b>1,714,849</b>		
<b>YTD Total</b>		239,079	265,460	11.0%

Enplaned Passengers & Load Factor				
Airline	Enplaned PAX	Feb-16	Feb-15	Diff.
Alaska/Horizon	15,596	79.2%	75.0%	4.2
Allegiant Air	1,345	90.0%	65.7%	24.4
American	27,708	84.4%	90.4%	-6.0
Delta	9,506	83.2%	71.9%	11.3
jetBlue	3,098	86.1%	n/a	n/a
Southwest	55,197	81.2%	77.1%	4.1
United	19,150	87.0%	90.6%	-3.7
US Airways	0	n/a	84.8%	n/a
Volaris	1,569	67.4%	72.0%	-4.6

Source: RNO Monthly Flight Activity Reports

