



Passenger and Cargo Statistics Report

Reno-Tahoe International Airport
March 2016



**Reno-Tahoe
Airport Authority**

U.S. DOMESTIC INDUSTRY OVERVIEW FOR MARCH 2016

All RNO Carriers Domestic Systemwide – year over year comparison

| | |
|----------------------|--|
| Average Load Factor: | 85.8% down (0.7) pts. |
| Number of Flights *: | Flat |
| Capacity of Seats *: | Up 2.3% |
| Crude Oil Average: | \$37.55 per barrel in Mar. 2016 vs. \$47.82 per barrel in Mar. 2015 |

RNO OVERVIEW FOR MARCH 2016 – year over year comparison

| | |
|----------------------------|--------------------|
| Total Passengers: | Up 12.4% |
| Avg. Enplaned Load Factor: | 84.7%, up 3.6 pts. |
| Actual Departures: | Down (2.5%) |
| Actual Departing Seats: | Up 5.7% |
| Total Cargo: | Up 25.2% |

Source: RNO Monthly Flight Activity Reports; * INNOVATA Flight Schedule via Diio

MARCH 2016 SUMMARY

Reno-Tahoe International Airport (RNO) served 311,974 passengers in March 2016, which is up 12.4% versus March 2015. During the first quarter of 2016, RNO served 841,649 passengers, representing an increase of 10.9% when compared to the same period last year.

In March 2016, RNO handled 13,000,812 pounds of cargo, an increase of 25.2% when compared to March 2015. With respect to year-over-year monthly increases, March 2016 is the 13th consecutive month of air cargo growth at RNO. During the first quarter of 2016, RNO handled 35,887,231 pounds of cargo, representing an increase of 20% when compared to the same period last year.

In March 2016, RNO was served by eight airlines providing 56 peak daily departures to 18 non-stop destinations (21 non-stop destinations if seasonal and new announced flights are included). At RNO, total departures were down (2.5%) and the seat capacity increased 5.7% when compared to March 2015.

On March 16, 2016, Alaska Airlines began non-stop daily flights between RNO and John Wayne Airport, Orange County (SNA), utilizing a 76-seat Bombardier Q400 aircraft.

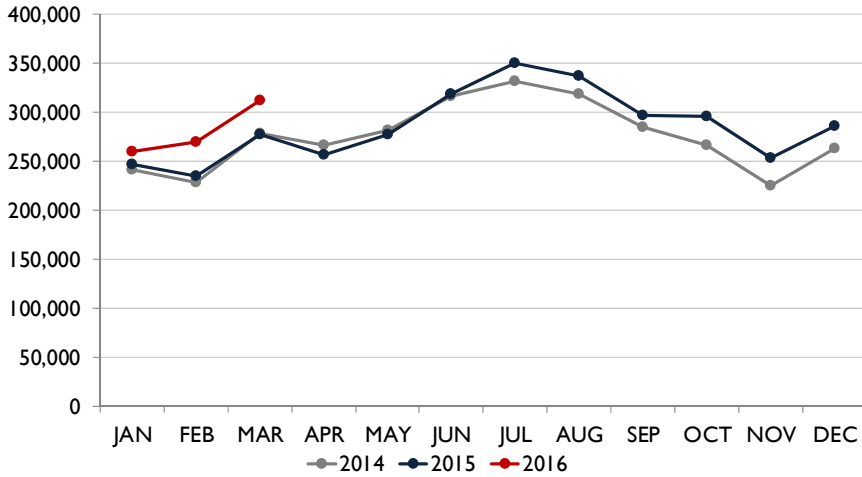
Starting June 5, 2016, Southwest Airlines will begin non-stop flights between RNO and Oakland International Airport three times a day. The airline will utilize a 143-seat Boeing 737-700 aircraft on this route.

Starting June 9, 2016, Allegiant Air will begin non-stop flights between RNO and Los Angeles International Airport twice a week. The airline will provide this service on Thursdays and Sundays.



Starting August 15, 2016, JetBlue Airways will begin non-stop flights between Reno and Long Beach Airport, providing both business and leisure travelers another option for travel between Reno and the Los Angeles basin. The airline will fly the route with a 150-seat Airbus 320. It will depart Reno at 2:15 p.m. and arrive in Long Beach at 3:40 p.m. It will depart Long Beach at 12:15 p.m. and land in Reno at 1:30 p.m.

TOTAL PASSENGERS



TOTAL PASSENGERS

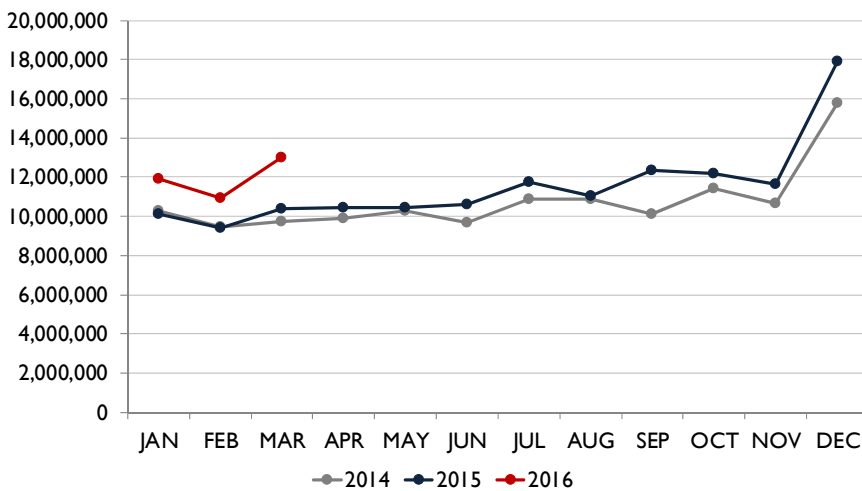
RNO served 311,974 passengers in March 2016, which is up 12.4% when compared to March 2015. All airlines at RNO, with the exception of Allegiant Air, reported a year-over-year passenger growth in March 2016. Southwest Airlines, the largest carrier at RNO, served 135,207 passengers during the month of March 2016, an increase of 10.9% when compared to March 2015.

In March 2016, Alaska Airlines reported a passenger increase of 21.3%, Delta Air Lines grew 10.3%, United Airlines was up 3.7% and American Airlines reported an increase of 1.7% when compared to the same period last year.

Allegiant Air's passenger traffic declined (11.8%) during the same period.

Volaris served 3,529 passengers during the month of March 2016, an increase of 49.6% when compared to the same period last year.

TOTAL CARGO

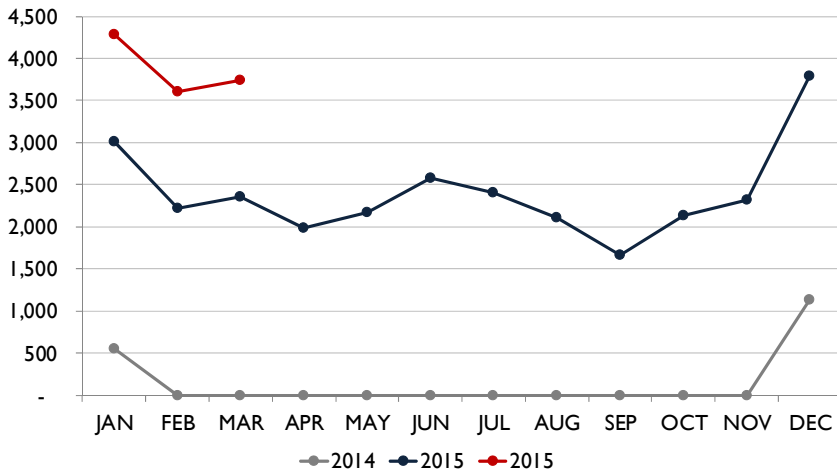


TOTAL CARGO

In March 2016, RNO handled 13,000,812 pounds of air cargo, an increase of 25.2% versus March 2015. The cargo tonnage of DHL increased 61.7%, UPS was up 54.3% and FedEx reported an increase of 15.4% during the same period.



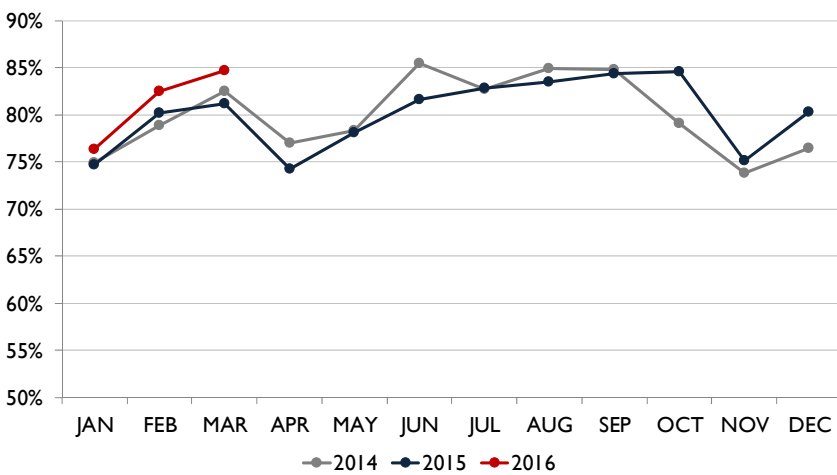
TOTAL INTERNATIONAL PASSENGERS



TOTAL INTERNATIONAL PASSENGERS

In March 2016, RNO served a total of 3,745 international passengers. Volaris operated three times a week scheduled flights to Guadalajara, Mexico. In addition, Air North, a Canadian airline, operated a charter flight between Reno and Vancouver that carried 216 international passengers in March 2016.

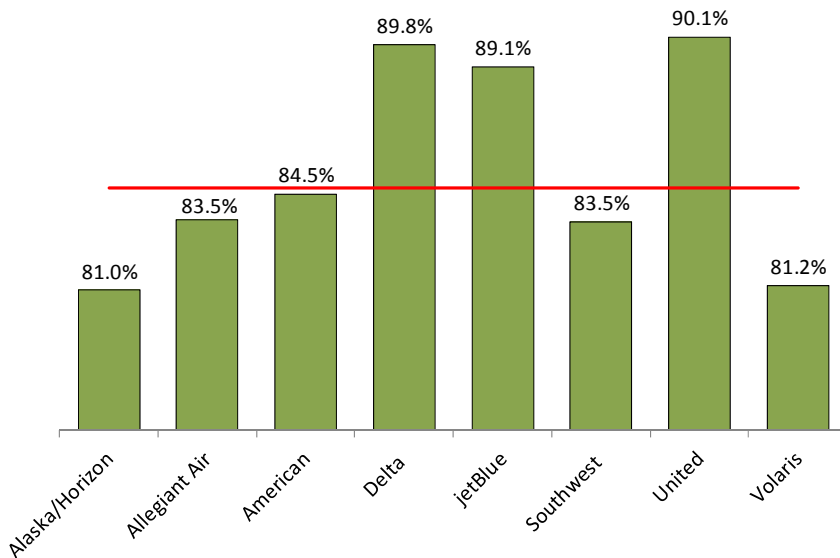
AVERAGE ENPLANED LOAD FACTOR



AVERAGE ENPLANED LOAD FACTOR

In March 2016, the average enplaned load factor at RNO was 84.7%, an increase of 3.6 pts. versus March 2015.

AVERAGE ENPLANED LOAD FACTOR BY AIRLINE



| Enplaned Load Factors March 2016 | | | |
|----------------------------------|-------|---------|------------|
| Airline | RNO | Network | Difference |
| Alaska | 81.0% | 86.2% | (5.2) |
| Allegiant Air | 83.5% | 86.5% | (3.0) |
| American | 84.5% | 81.7% | 2.8 |
| Delta | 89.8% | 84.8% | 5.0 |
| jetBlue | 89.1% | 86.8% | 2.3 |
| Southwest | 83.5% | 84.6% | (1.1) |
| United | 90.1% | 81.6% | 8.5 |
| Volaris | 81.2% | | n/a |

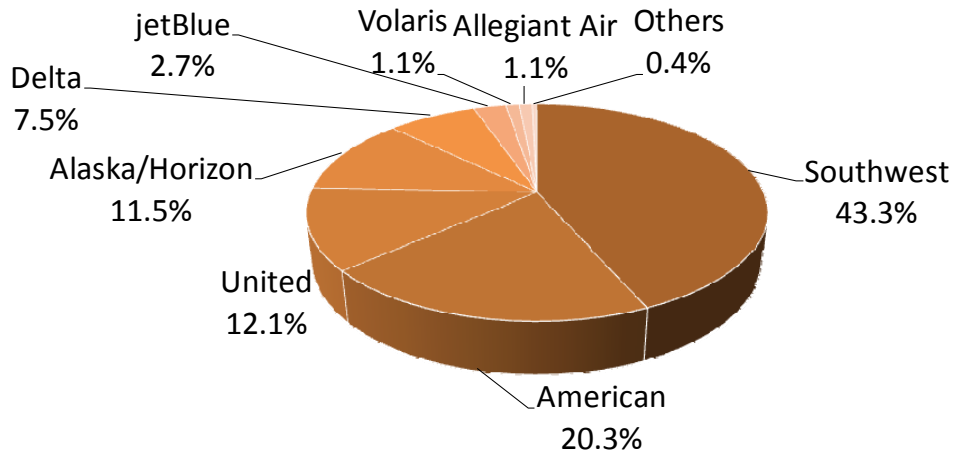
Source: Airline Performance Reports



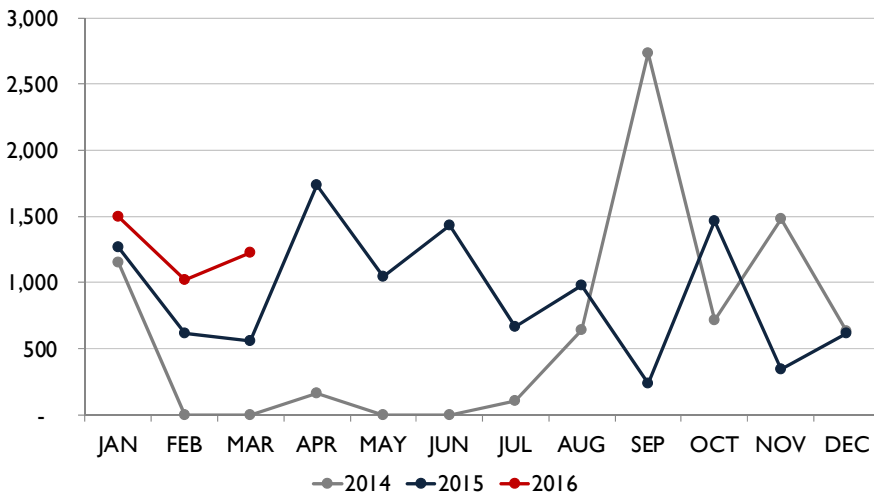
AIR CARRIER MARKET SHARE

| | March-16 | March-15 | YOY Change |
|----------------|----------|----------|------------|
| Alaska/Horizon | 11.5% | 10.7% | 0.8 |
| Allegiant Air | 1.1% | 1.4% | (0.3) |
| American | 20.3% | 22.4% | 7.5 |
| Delta | 7.5% | 7.6% | (0.1) |
| jetBlue | 2.7% | n/a | n/a |
| Southwest | 43.3% | 43.9% | (0.6) |
| United | 12.1% | 13.1% | (1.0) |
| Volaris | 1.1% | 0.9% | 0.3 |
| Others | 0.4% | 0.0% | 0.4 |

AIR CARRIER MARKET SHARE



TOTAL CHARTER PASSENGERS

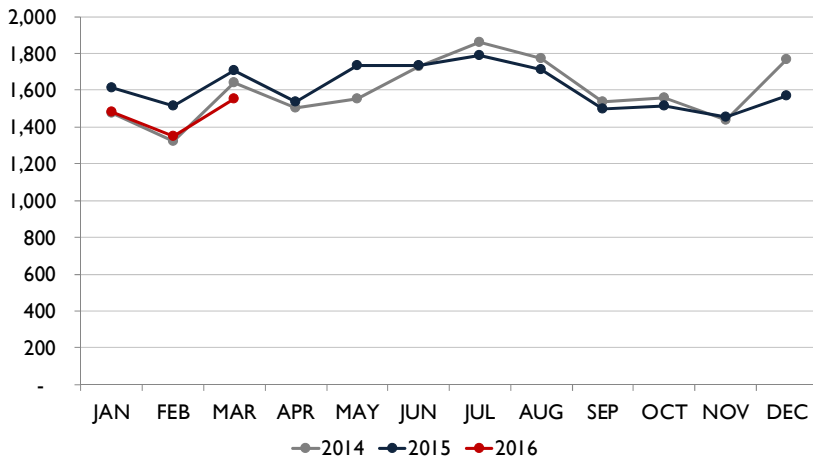


TOTAL CHARTER PASSENGERS

In March 2016, RNO served 1,145 charter passengers through the terminal. A total of eight charter operations occurred during the month of March 2016.



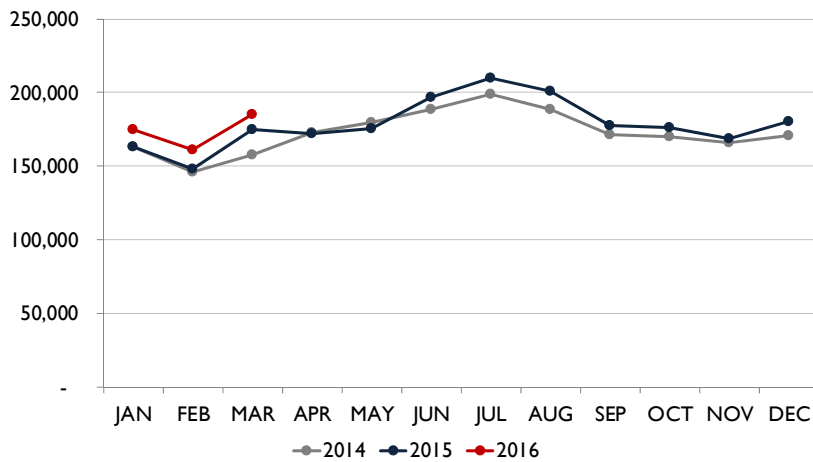
MONTHLY SCHEDULED DEPARTURES



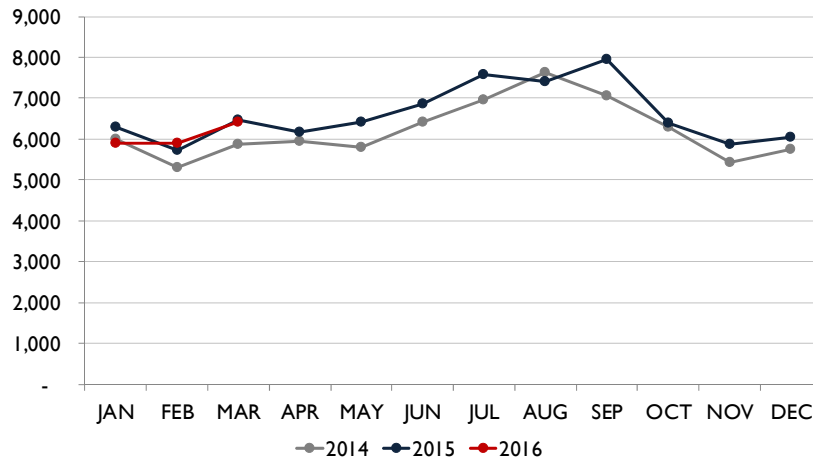
TOTAL DEPARTURES & SEATS

In March 2016, RNO handled 1,531 departures on eight commercial airlines, a decrease of (2.5%) when compared to March 2015. The number of departing seats were up 5.7% at 184,051 for the same period.

MONTHLY SCHEDULED SEATS



TOTAL OPERATIONS



TOTAL OPERATIONS

A total of 6,419 operations occurred at RNO in March 2016, a decrease of (0.9%) when compared to March 2015. Total operations include: Air Carrier, Air Taxi, General Aviation and Military operations as reported by the FAA.



Recent and Upcoming Schedule Changes

Alaska Airlines (AS)

- Starting March 13, 2016, the non-stop flight between RNO and Boise was re-timed:
 - Boise to Reno:
 - AS2157 9:25AM-9:42AM
 - Reno to Boise:
 - AS2164 4:35PM-6:58PM
- Starting March 13, 2016, the non-stop flight between RNO and San Jose was re-timed:
 - San Jose to Reno:
 - AS2250 7:35AM-8:30AM
 - AS2017 6:15PM-7:10PM
 - Reno to San Jose:
 - AS2183 6:00AM-6:55AM
 - AS2320 5:50PM-6:44PM
- Starting March 16, 2016, Alaska Airlines began non-stop flights between RNO and Orange County
 - Orange County to Reno:
 - AS2700 2:45PM-4:05PM
 - Reno to Orange County:
 - AS2701 10:15AM-11:37AM

JetBlue Airways

- The non-stop flight between Reno and New York City will operate daily until May 3, 2016. The flight reduces to four-times a week schedule from May 4 through May 21 (Thursday, Friday, Sunday, Monday) before returning to the full seven days a week schedule.

United Airlines (UA)

- The twice a week seasonal non-stop flight between Reno and Houston operated until April 3, 2016. This flight will return on June 11, 2016, for the summer season and will operate on Saturdays and Sundays only.

Southwest Airlines (WN)

- The seasonal daily non-stop flight between Reno and Chicago Midway resumed service on March 10, 2016, and will operate through the end of October.
- Starting June 5, 2016, WN will offer non-stop flights between RNO and Oakland
 - Oakland to Reno:
 - WN553 10:50AM-11:40AM
 - WN2867 4:10PM-5:00PM
 - WN480 8:45PM-9:35PM
 - Reno to Oakland:
 - WN3185 6:10AM-7:15AM
 - WN1140 9:30AM-10:35AM
 - WN3505 5:35PM-6:40PM



Reno-Tahoe International Airport

| Total Passengers March-16 | | | | | |
|------------------------------|------------------|------------------|--------------|----------------|--------------|
| | Passengers | | % Diff. | Passengers | |
| | 2014 | 2015 | | 2016 | % Diff. |
| JAN | 241,181 | 246,571 | 2.2% | 259,868 | 5.4% |
| FEB | 228,035 | 234,763 | 3.0% | 269,807 | 14.9% |
| MAR | 278,172 | 277,477 | -0.2% | 311,974 | 12.4% |
| 1st Quarter | 747,388 | 758,811 | 1.5% | 841,649 | 10.9% |
| APR | 266,800 | 256,823 | -3.7% | | |
| MAY | 282,277 | 276,969 | -1.9% | | |
| JUN | 316,720 | 319,309 | 0.8% | | |
| 2nd Quarter | 865,797 | 853,101 | -1.5% | | |
| JUL | 332,242 | 350,823 | 5.6% | | |
| AUG | 318,965 | 336,948 | 5.6% | | |
| SEP | 284,931 | 297,299 | 4.3% | | |
| 3rd Quarter | 936,138 | 985,070 | 5.2% | | |
| OCT | 266,701 | 295,749 | 10.9% | | |
| NOV | 225,384 | 253,494 | 12.5% | | |
| DEC | 263,682 | 286,105 | 8.5% | | |
| 4th Quarter | 755,767 | 835,675 | 10.6% | | |
| TOTAL | 3,305,090 | 3,432,657 | 3.9% | | |
| YTD Total | | 758,811 | | 841,649 | 10.9% |

| Total Cargo March-16 | | | | | | |
|-------------------------|--------------------|--------------------|--------------|-------------------|---------------|--------------|
| | 2014 | 2015 | % Diff. | 2016 | | % Diff. |
| | Cargo in Pounds | | | Pounds | Metric | |
| JAN | 10,303,380 | 10,113,421 | -1.8% | 11,939,003 | 5,415 | 18.1% |
| FEB | 9,486,697 | 9,418,781 | -0.7% | 10,947,416 | 4,965 | 16.2% |
| MAR | 9,758,391 | 10,381,009 | 6.4% | 13,000,812 | 5,896 | 25.2% |
| 1st Quarter | 29,548,468 | 29,913,211 | 1.2% | 35,887,231 | 16,275 | 20.0% |
| APR | 9,876,465 | 10,416,248 | 5.5% | | | |
| MAY | 10,269,963 | 10,459,643 | 1.8% | | | |
| JUN | 9,679,744 | 10,595,645 | 9.5% | | | |
| 2nd Quarter | 29,826,172 | 31,471,536 | 5.5% | | | |
| JUL | 10,863,843 | 11,775,072 | 8.4% | | | |
| AUG | 10,853,726 | 11,031,470 | 1.6% | | | |
| SEP | 10,127,014 | 12,360,393 | 22.1% | | | |
| 3rd Quarter | 31,844,583 | 35,166,935 | 10.4% | | | |
| OCT | 11,429,538 | 12,160,586 | 6.4% | | | |
| NOV | 10,664,398 | 11,657,012 | 9.3% | | | |
| DEC | 15,776,073 | 17,907,699 | 13.5% | | | |
| 4th Quarter | 37,870,009 | 41,725,297 | 10.2% | | | |
| TOTAL | 129,089,232 | 138,276,979 | 7.1% | | | |
| YTD Total | | 29,913,211 | | 35,887,231 | 16,275 | 20.0% |

| Total Enplaned Passengers March-16 | | | | |
|---------------------------------------|------------------|------------------|---------|---------|
| Month | 2014 | 2015 | 2016 | % Diff. |
| JAN | 121,700 | 124,505 | 130,546 | 4.9% |
| FEB | 113,777 | 117,750 | 133,669 | 13.5% |
| MAR | 142,542 | 141,314 | 156,542 | 10.8% |
| APR | 132,183 | 128,088 | | |
| MAY | 139,349 | 137,132 | | |
| JUN | 158,827 | 159,989 | | |
| JUL | 162,090 | 172,266 | | |
| AUG | 159,664 | 166,935 | | |
| SEP | 147,458 | 151,127 | | |
| OCT | 134,946 | 150,567 | | |
| NOV | 112,573 | 125,712 | | |
| DEC | 128,295 | 142,253 | | |
| TOTAL | 1,653,404 | 1,717,638 | | |
| YTD Total | | 383,569 | 420,757 | 9.7% |

| Total Deplaned Passengers | | | | |
|---------------------------|------------------|------------------|---------|---------|
| Month | 2014 | 2015 | 2016 | % Diff. |
| JAN | 119,481 | 122,066 | 129,322 | 5.9% |
| FEB | 114,258 | 117,013 | 136,138 | 16.3% |
| MAR | 135,630 | 136,163 | 155,432 | 14.2% |
| APR | 134,617 | 128,735 | | |
| MAY | 142,928 | 139,837 | | |
| JUN | 157,893 | 159,320 | | |
| JUL | 170,152 | 178,557 | | |
| AUG | 159,307 | 170,013 | | |
| SEP | 137,480 | 146,172 | | |
| OCT | 131,755 | 145,182 | | |
| NOV | 112,811 | 127,782 | | |
| DEC | 135,387 | 143,852 | | |
| TOTAL | 1,651,699 | 1,714,692 | | |
| YTD Total | | 375,242 | 420,892 | 12.2% |

| Enplaned Passengers & Load Factor | | | | |
|-----------------------------------|--------------|--------|--------|-------|
| Airline | Enplaned PAX | Mar-16 | Mar-15 | Diff. |
| Alaska/Horizon | 18,103 | 81.0% | 76.6% | 4.4 |
| Allegiant Air | 1,803 | 83.5% | 63.5% | 20.1 |
| American | 30,761 | 84.5% | 91.4% | -6.9 |
| Delta | 11,951 | 89.8% | 77.5% | 12.4 |
| jetBlue | 4,141 | 89.1% | n/a | n/a |
| Southwest | 68,684 | 83.5% | 77.4% | 6.1 |
| United | 18,714 | 90.1% | 90.7% | -0.6 |
| US Airways | 0 | n/a | 87.3% | n/a |
| Volaris | 1,744 | 81.2% | 74.6% | 6.5 |

Source: RNO Monthly Flight Activity Reports

