



Passenger and Cargo Statistics Report

Reno-Tahoe International Airport
May 2016



**Reno-Tahoe
Airport Authority**

U.S. DOMESTIC INDUSTRY OVERVIEW FOR MAY 2016

All RNO Carriers Domestic Systemwide – year over year comparison

Average Load Factor:	85.6% flat
Number of Flights *:	Up 1.3%
Capacity of Seats *:	Up 3.3%
Crude Oil Average:	\$46.83 per barrel in May 2016 vs. \$59.27 per barrel in May 2015

RNO OVERVIEW FOR MAY 2016 – year over year comparison

Total Passengers:	Up 4.3%
Avg. Enplaned Load Factor:	77.5%, down 0.6 pts.
Actual Departures:	Flat
Actual Departing Seats:	Up 5.4%
Total Cargo:	Data unavailable

*Source: RNO Monthly Flight Activity Reports; * INNOVATA Flight Schedule via Diio*

MAY 2016 SUMMARY

Reno-Tahoe International Airport (RNO) served 288,763 passengers in May 2016, which is up 4.3% versus May 2015. During the first five months of 2016, RNO served 1,404,119 passengers, representing an increase of 8.6% when compared to the same period last year. This year-over-year growth is attributed to the additional seat capacity on new flights, and an improving economy in the Northern Nevada region.

In May 2016, RNO was served by eight airlines providing 55 peak daily departures to 17 non-stop destinations (22 non-stop destinations if seasonal and new announced flights are included). At RNO, total seat capacity increased 5.4% and departures remained the same when compared to May 2015.

Southwest Airlines began non-stop flights between RNO and Oakland International Airport three times a day on June 5, 2016.

Allegiant Air began non-stop flights between RNO and Los Angeles International Airport twice a week on June 9, 2016. The airline provides this service on Thursdays and Sundays.

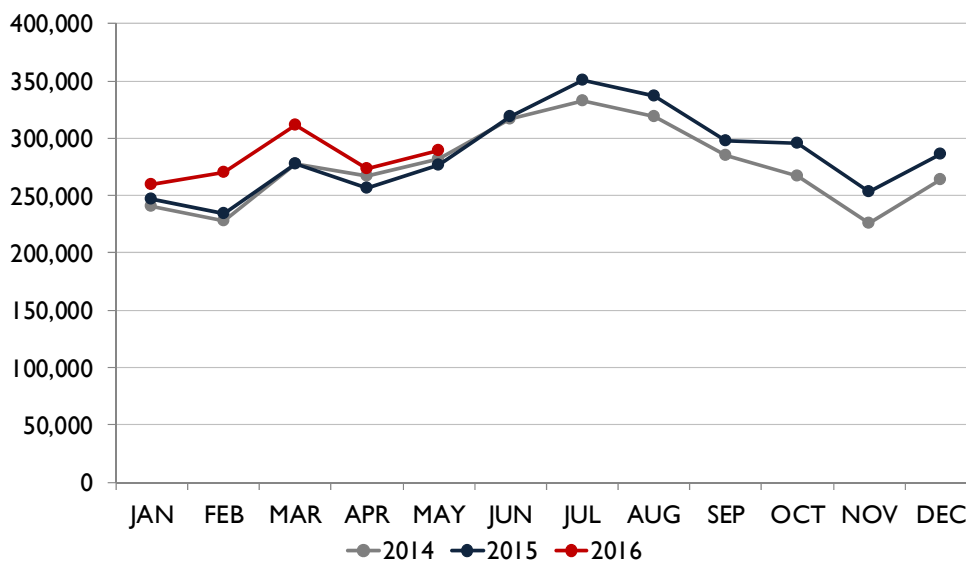
Starting August 15, 2016, JetBlue Airways will begin non-stop flights between RNO and Long Beach Airport, providing both business and leisure travelers another option for travel between Reno and the Los Angeles basin. The airline will fly the route with a 150-seat Airbus 320.

Starting December 19, 2016, Delta Air Lines will begin non-stop flights between Reno and Atlanta International Airport. The Atlanta-Reno flight will begin as three



times per week service during the holidays, from December 19, 2016, until January 3, 2017. The flight reduces to once a week service, Saturday arrival and Sunday departure, on January 7, 2017. The airline will utilize a 183-seat Boeing 757 on this route.

TOTAL PASSENGERS



TOTAL PASSENGERS

RNO served 288,763 passengers in May 2016, which is up 4.3% when compared to May 2015. All airlines at RNO, with the exception of Allegiant Air and American Airlines, reported a year-over-year passenger growth in May 2016.

In May 2016, Allegiant Air reported a passenger decline of (16.2%), carrying 563 less passengers, when compared to May 2015. In addition, Allegiant operated one charter flight in May 2015 and no charters in May 2016.

American Airlines' passenger traffic was down (8.0%) in May 2016 when compared to same period last year. This passenger decline is primarily caused by the year-over-over reduction in seat capacity on certain routes. In addition, the airline reported a load factor of 83%, a reduction of 4.3 points during the same period.

Southwest Airlines, the largest carrier at RNO, served 125,485 passengers during the month of May 2016, an increase of 0.3% when compared to May 2015.

In May 2016, Alaska Airlines reported a passenger increase of 21.1%, Delta Air Lines grew 11.0% and United Airlines reported an increase of 1.3% when compared to the same period last year.

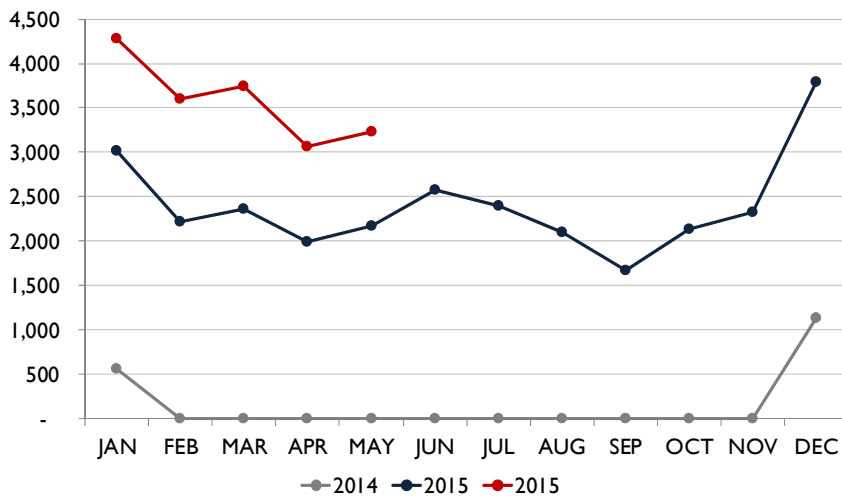
Volaris served 3,230 passengers during the month of May 2016, an increase of 48.8% when compared to the same period last year.

TOTAL CARGO

April 2016 and May 2016 cargo data is not available for reporting at this time.



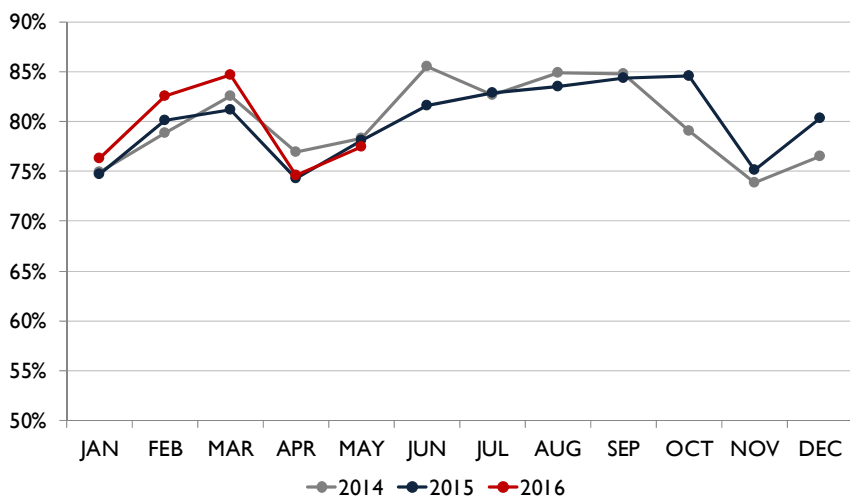
TOTAL INTERNATIONAL PASSENGERS



TOTAL INTERNATIONAL PASSENGERS

In May 2016, RNO served a total of 3,477 international passengers. Volaris operated three times a week scheduled flights to Guadalajara, Mexico. In addition, Air North operated a charter flight between Reno and Vancouver, Canada.

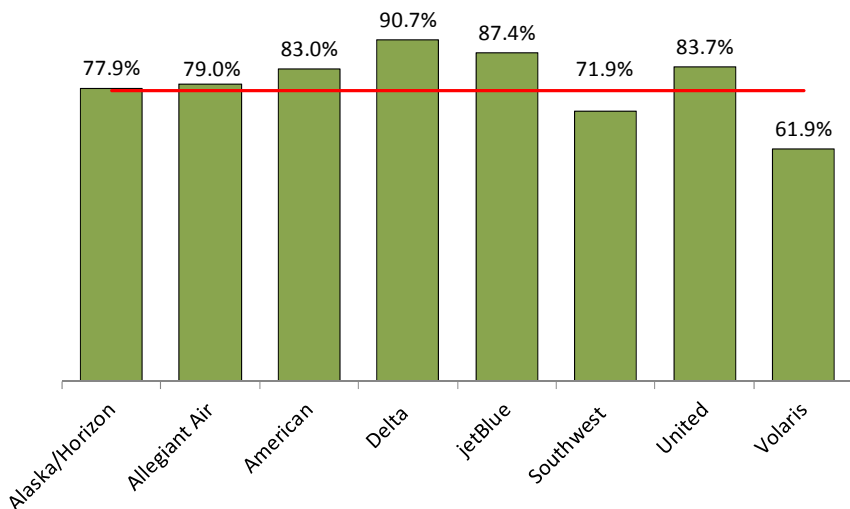
AVERAGE ENPLANED LOAD FACTOR



AVERAGE ENPLANED LOAD FACTOR

In May 2016, the average enplaned load factor at RNO was 77.5%, a decrease of 0.6 pts. versus May 2015.

AVERAGE ENPLANED LOAD FACTOR BY AIRLINE



Average Enplaned Load Factor May 2016

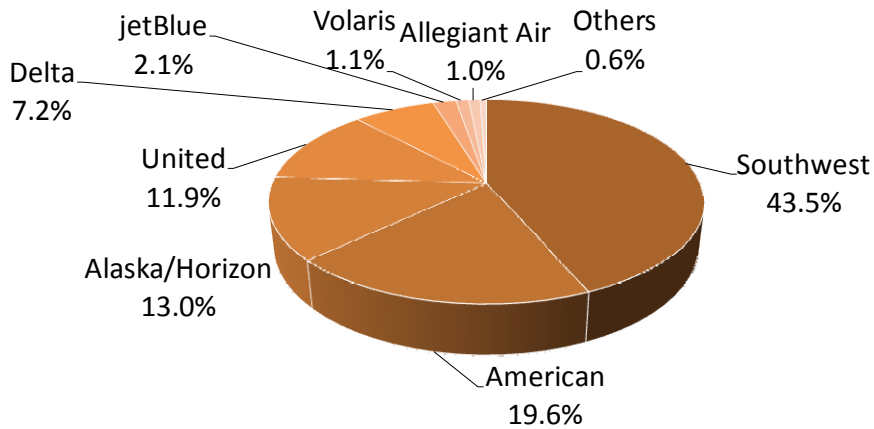
Airline	RNO	Network	Difference
Alaska	77.9%	84.7%	(6.8)
Allegiant Air	79.0%	85.1%	(6.1)
American	83.0%	81.9%	1.1
Delta	90.7%	85.3%	5.4
jetBlue	87.4%	84.6%	2.8
Southwest	71.9%	85.8%	(13.9)
United	83.7%	82.5%	1.2
Volaris	61.9%		n/a



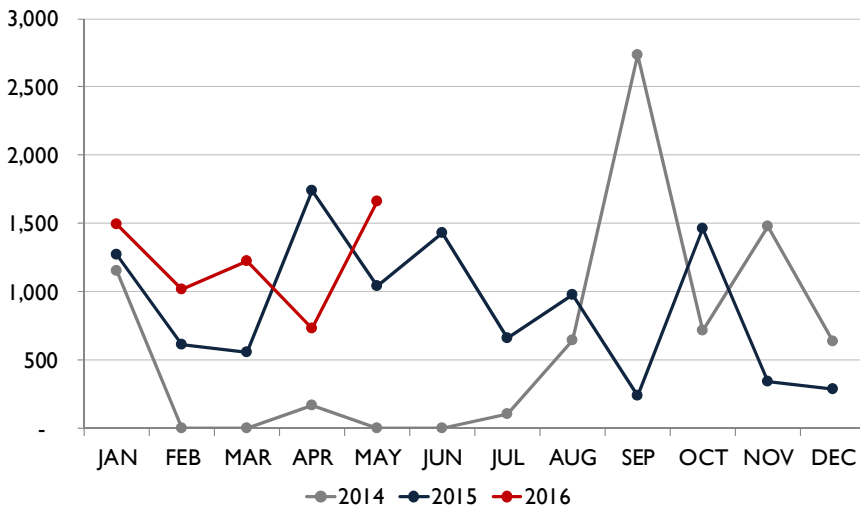
AIR CARRIER MARKET SHARE

	May-16	May-15	YOY Change
Alaska/Horizon	13.0%	11.2%	1.8
Allegiant Air	1.0%	1.3%	(0.2)
American	19.6%	22.2%	(2.6)
Delta	7.2%	6.8%	0.4
jetBlue	2.1%	0.3%	1.8
Southwest	43.5%	45.2%	(1.7)
United	11.9%	12.3%	(0.3)
Volaris	1.1%	0.8%	0.3
Others	0.6%	0.0%	0.6

AIR CARRIER MARKET SHARE



TOTAL CHARTER PASSENGERS

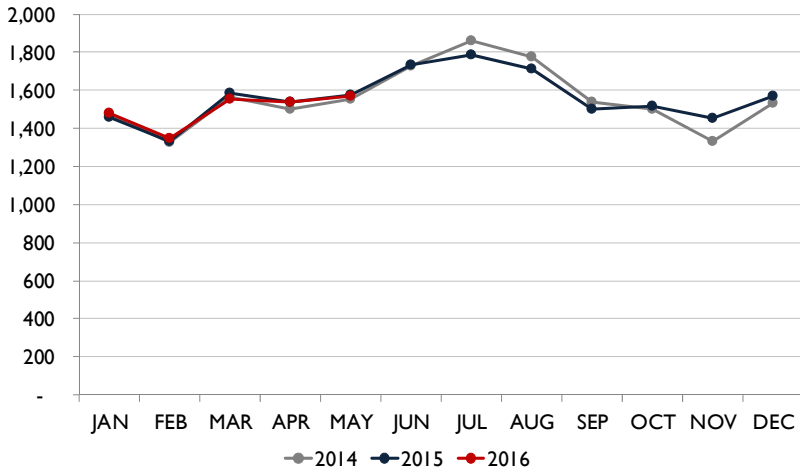


TOTAL CHARTER PASSENGERS

In May 2016, RNO served 1,662 charter passengers through the terminal. A total of 11 charter operations occurred during the month of May 2016.



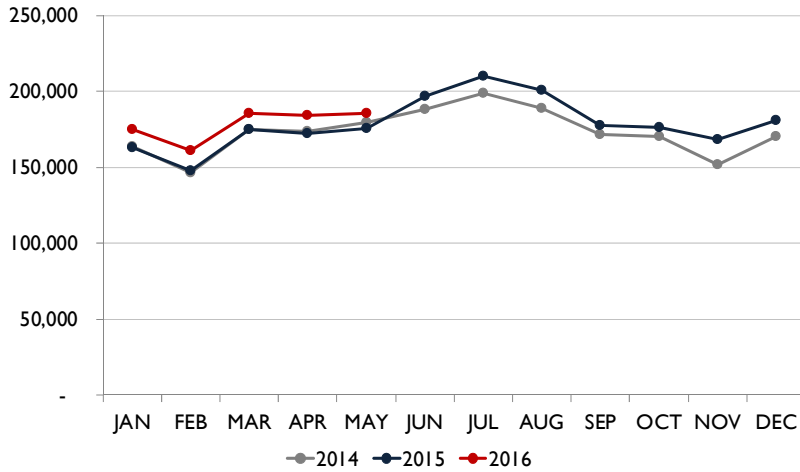
MONTHLY SCHEDULED DEPARTURES



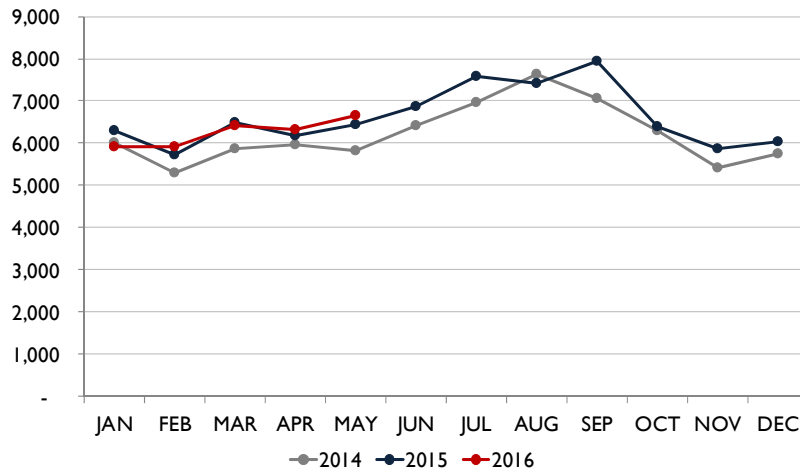
TOTAL DEPARTURES & SEATS

In May 2016, RNO handled 1,570 departures on eight commercial airlines, an increase of 0.1% when compared to May 2015. The number of departing seats were up 5.4% at 185,143 for the same period.

MONTHLY SCHEDULED SEATS



TOTAL OPERATIONS



TOTAL OPERATIONS

A total of 6,643 operations occurred at RNO in May 2016, an increase of 3.3% when compared to May 2015. Total operations include: Air Carrier, Air Taxi, General Aviation and Military operations as reported by the FAA.



Recent and Upcoming Schedule Changes

Allegiant Air

- The non-stop flight between Reno and Las Vegas operates on Wednesdays, Fridays and Sundays.
- The new non-stop flight between Reno and Los Angeles operates on Thursdays and Sundays.

American Airlines

- Starting June 2, 2016, American Airlines increased the number of non-stop flights between Reno and Los Angeles from four times a day to five times a day.
- Starting June 2, 2016, American Airlines increased the number of non-stop flights between Reno and Chicago from once a day to twice a day.
- Starting June 3, 2016, American Airlines increased the number of non-stop flights between Reno and Dallas from twice a day to three times a day. The additional third flight will operate on Mondays, Tuesdays, Fridays and Saturdays.
- Starting June 9, 2016, American Airlines increased the number of non-stop flights between Reno and Phoenix from three flights a day to four flights a day.

Delta Air Lines

- The seasonal non-stop flight between Reno and Minneapolis will operate from June 11, 2016, until August 27, 2016. The airline offers this route on Saturdays only.

JetBlue Airways

- The non-stop flight between Reno and New York City will operate daily until September 6, 2016. The flight reduces to four-times a week schedule on September 8, 2016 (Thursday, Friday, Sunday, Monday).
- The non-stop flight between Reno and Long Beach Airport begins on August 15, 2016. It will depart Reno at 2:15 p.m. and arrive in Long Beach at 3:40 p.m. It will depart Long Beach at 12:15 p.m. and land in Reno at 1:30 p.m.

United Airlines

- The seasonal twice a week non-stop flight between Reno and Houston returned on June 11, 2016, for the summer season and will operate on Saturdays and Sundays only.
- Starting July 5, 2016, United Airlines will increase the number of non-stop flights between Reno and Denver from twice a day to three times a day. The frequency will then be increased to four times a day in September, before returning to twice a day schedule in November.

Southwest Airlines

- The schedule for the new non-stop flights between RNO and Oakland is as follows:
 - Oakland to Reno:
 - WN553 10:50AM-11:40AM, WN2867 4:10PM-5:00PM, WN480 8:45PM-9:35PM
 - Reno to Oakland:
 - WN3185 6:10AM-7:15AM, WN1140 9:30AM-10:35AM, WN3505 5:35PM-6:40PM

Volaris

- The non-stop flight between Reno and Guadalajara, Mexico operates on Mondays, Wednesdays and Fridays.



Reno-Tahoe International Airport

Total Passengers May-16					
	Passengers		% Diff.	Passengers	
	2014	2015		2016	% Diff.
JAN	241,181	246,571	2.2%	259,868	5.4%
FEB	228,035	234,763	3.0%	269,807	14.9%
MAR	278,172	277,477	-0.2%	311,974	12.4%
1st Quarter	747,388	758,811	1.5%	841,649	10.9%
APR	266,800	256,823	-3.7%	273,707	6.6%
MAY	282,277	276,969	-1.9%	288,763	4.3%
JUN	316,720	319,309	0.8%		
2nd Quarter	865,797	853,101	-1.5%		
JUL	332,242	350,823	5.6%		
AUG	318,965	336,948	5.6%		
SEP	284,931	297,299	4.3%		
3rd Quarter	936,138	985,070	5.2%		
OCT	266,701	295,749	10.9%		
NOV	225,384	253,494	12.5%		
DEC	263,682	286,105	8.5%		
4th Quarter	755,767	835,675	10.6%		
TOTAL	3,305,090	3,432,657	3.9%		
YTD Total		1,292,603		1,404,119	8.6%

Total Enplaned Passengers May-16				
Month	2014	2015	2016	% Diff.
JAN	121,700	124,505	130,546	4.9%
FEB	113,777	117,750	133,669	13.5%
MAR	142,542	141,314	156,542	10.8%
APR	132,183	128,088	136,453	6.5%
MAY	139,349	137,132	144,228	5.2%
JUN	158,827	159,989		
JUL	162,090	172,266		
AUG	159,664	166,935		
SEP	147,458	151,127		
OCT	134,946	150,567		
NOV	112,573	125,712		
DEC	128,295	142,253		
TOTAL	1,653,404	1,717,638		
YTD Total		648,789	701,438	8.1%

Total Deplaned Passengers				
Month	2014	2015	2016	% Diff.
JAN	119,481	122,066	129,322	5.9%
FEB	114,258	117,013	136,138	16.3%
MAR	135,630	136,163	155,432	14.2%
APR	134,617	128,735	136,453	6.0%
MAY	142,928	139,837	144,535	3.4%
JUN	157,893	159,320		
JUL	170,152	178,557		
AUG	159,307	170,013		
SEP	137,480	146,172		
OCT	131,755	145,182		
NOV	112,811	127,782		
DEC	135,387	143,852		
TOTAL	1,651,699	1,714,692		
YTD Total		643,814	701,880	9.0%

Total Cargo May-16						
	2014	2015	% Diff.	2016		% Diff.
	Cargo in Pounds			Pounds	Metric	
JAN	10,303,380	10,113,421	-1.8%	11,939,003	5,415	18.1%
FEB	9,486,697	9,418,781	-0.7%	10,947,416	4,965	16.2%
MAR	9,758,391	10,381,009	6.4%	13,002,159	5,897	25.2%
1st Quarter	29,548,468	29,913,211	1.2%	35,888,578	16,276	20.0%
APR	9,876,465	10,416,248	5.5%			
MAY	10,269,963	10,459,643	1.8%			
JUN	9,679,744	10,595,645	9.5%			
2nd Quarter	29,826,172	31,471,536	5.5%			
JUL	10,863,843	11,775,072	8.4%			
AUG	10,853,726	11,031,470	1.6%			
SEP	10,127,014	12,360,393	22.1%			
3rd Quarter	31,844,583	35,166,935	10.4%			
OCT	11,429,538	12,160,586	6.4%			
NOV	10,664,398	11,657,012	9.3%			
DEC	15,776,073	17,907,699	13.5%			
4th Quarter	37,870,009	41,725,297	10.2%			
TOTAL	129,089,232	138,276,979	7.1%			
YTD Total		29,913,211		35,888,578	16,276	20.0%

Enplaned Passengers & Load Factor				
Airline	Enplaned PAX	May-16	May-15	Diff.
Alaska/Horizon	19,246	77.9%	78.4%	-0.5
Allegiant Air	1,442	79.0%	76.9%	2.1
American	28,526	83.0%	90.7%	-7.7
Delta	10,394	90.7%	87.5%	3.2
jetBlue	3,015	87.4%	89.8%	-2.4
Southwest	62,277	71.9%	70.4%	1.5
United	17,061	83.7%	92.2%	-8.5
US Airways	0	n/a	82.7%	n/a
Volaris	1,440	61.9%	63.0%	-1.1

Source: RNO Monthly Flight Activity Reports

