



Passenger and Cargo Statistics Report

Reno-Tahoe International Airport
June 2016

U.S. DOMESTIC INDUSTRY OVERVIEW FOR JUNE 2016

All RNO Carriers Domestic Systemwide – year over year comparison

Average Load Factor:	86.9% flat
Number of Flights *:	Up 1.4%
Capacity of Seats *:	Up 3.2%
Crude Oil Average:	\$48.76 per barrel in June 2016 vs. \$59.82 per barrel in June 2015

RNO OVERVIEW FOR JUNE 2016 – year over year comparison

Total Passengers:	Up 6.2%
Avg. Enplaned Load Factor:	79.6%, down 2 pts.
Actual Departures:	Up 0.5%
Actual Departing Seats:	Up 7.6%
Total Cargo:	Up 26.8%

*Source: RNO Monthly Flight Activity Reports; * INNOVATA Flight Schedule via Diio*

JUNE 2016 SUMMARY

Reno-Tahoe International Airport (RNO) served 338,954 passengers in June 2016, which is up 6.2% versus June 2015. During the first six months of 2016, RNO served 1,743,073 passengers, representing an increase of 8.1% when compared to the same period last year. During the Fiscal Year 2015/2016 (12 months ending June 2016), RNO served a total 3,563,491 passengers, an increase of 7.9% when compared to the Fiscal Year 2014/2015.

In June 2016, RNO was served by eight airlines providing 1,739 departures to 20 non-stop destinations (23 non-stop destinations if seasonal and new announced flights are included). At RNO, total seat capacity increased 7.6% and departures increased 0.5% when compared to June 2015.

In June 2016, RNO handled 13,432,224 pounds of air cargo, an increase of 26.8% versus June 2015.

During the first six months of 2016, RNO handled 73,753,005 million pounds of air cargo, an increase of 19.8% when compared to the same period last year.

During the Fiscal Year 2015/2016 (12 months ending June 2016), RNO handled a total 150,645,237 million pounds of air cargo, an increase of 14.8% when compared to the Fiscal Year 2014/2015.

Southwest Airlines began non-stop flights between RNO and Oakland International Airport three times a day on June 5, 2016.

Allegiant Air began non-stop flights between RNO and Los Angeles International Airport twice a week on June 9, 2016.

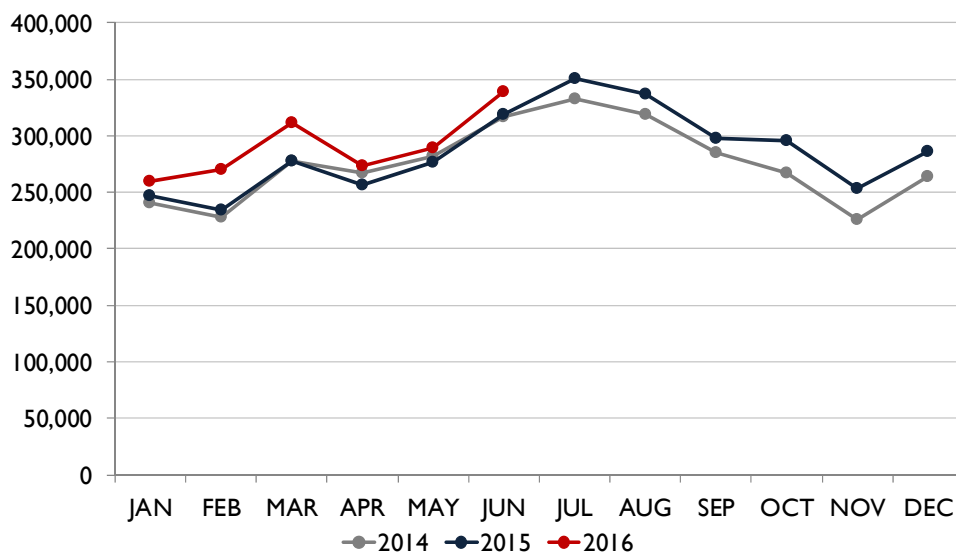


Starting August 15, 2016, JetBlue Airways will begin non-stop flights between RNO and Long Beach Airport, providing passengers another option for travel between Reno and the Los Angeles basin. It will depart Reno at 2:15 p.m. and arrive in Long Beach at 3:40 p.m. It will depart Long Beach at 12:15 p.m. and land in Reno at 1:30 p.m. The airline will fly the route with a 150-seat Airbus 320.

Starting December 19, 2016, Delta Air Lines will begin non-stop flights between Reno and Atlanta International Airport. The Atlanta-Reno flight will begin as three times per week service during the holidays, from December 19, 2016, until January 3, 2017. The flight reduces to once a week service, Saturday arrival and Sunday departure, on January 7, 2017. The airline will utilize a 183-seat Boeing 757 on this route.

Starting January 7, 2017, Southwest Airlines will begin once a week seasonal non-stop flights between RNO and Dallas Love Field Airport. American Airlines currently offers three daily non-stop flights between Reno and Dallas Fort Worth International Airport. The new flight will provide travelers a new option to fly between Reno and Dallas. The flight will depart Dallas Love Field at 11 a.m. and land in Reno at 12:30 in the afternoon. It will depart Reno at 11 a.m. and land in Dallas at 4:05 p.m. The flight will operate on Saturdays only.

TOTAL PASSENGERS



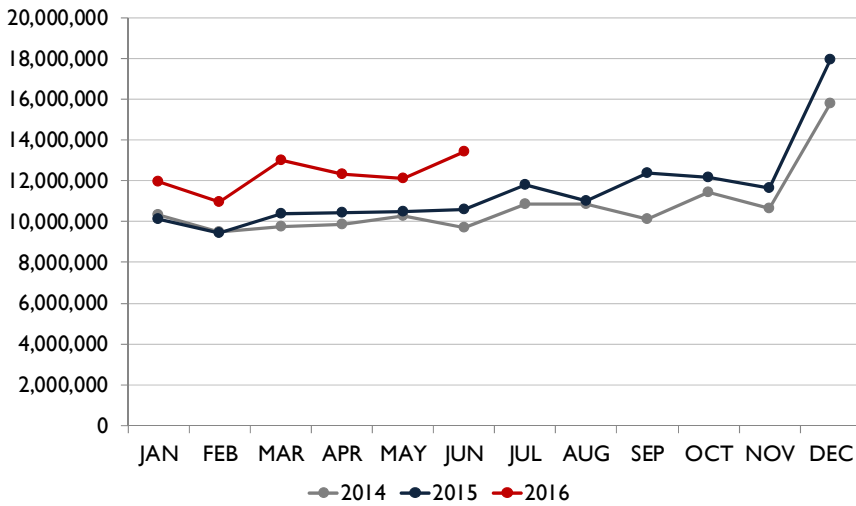
With the exception of United Airlines, all airlines at RNO reported a year-over-year passenger growth in June 2016. Southwest Airlines, the largest carrier at RNO, served 142,897 passengers during the month of June 2016, an increase of 5.3% when compared to June 2015.

In June 2016, JetBlue Airways reported a passenger growth of 35.7%, Allegiant Air increased 29.6%, Alaska Airlines was up 20.7%, Delta Air Lines was up 6.6% and American Airlines reported an increase of 1.6% when compared to the same period last year. Volaris served 3,662 passengers during the month of June 2016, an increase of 42.1% when compared to the same period last year.

United Airlines reported a year-over-year passenger decrease of 5.6%, carrying 2,111 less passengers in June 2016 versus last year. The average enplaned load factor of the airline was 81.8%, a decrease of 9.4 points when compared to June 2015. United Airlines' year-over-year seat capacity remained the same in June 2016.



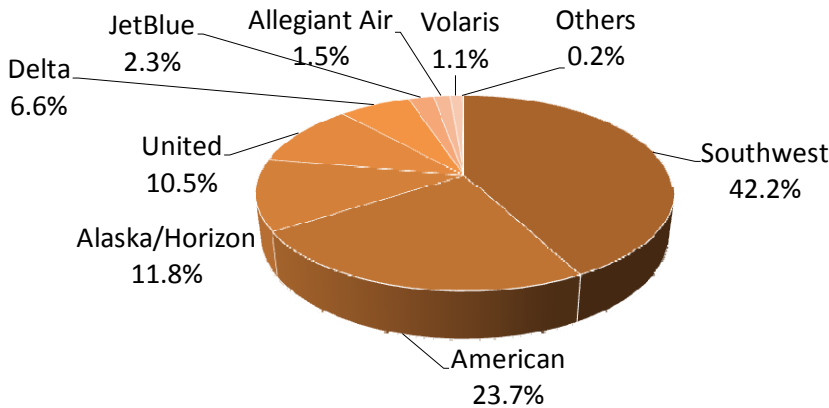
AIR CARGO



In June 2016, RNO handled 13,432,224 pounds of air cargo, representing a year-over-year increase of 26.8%.

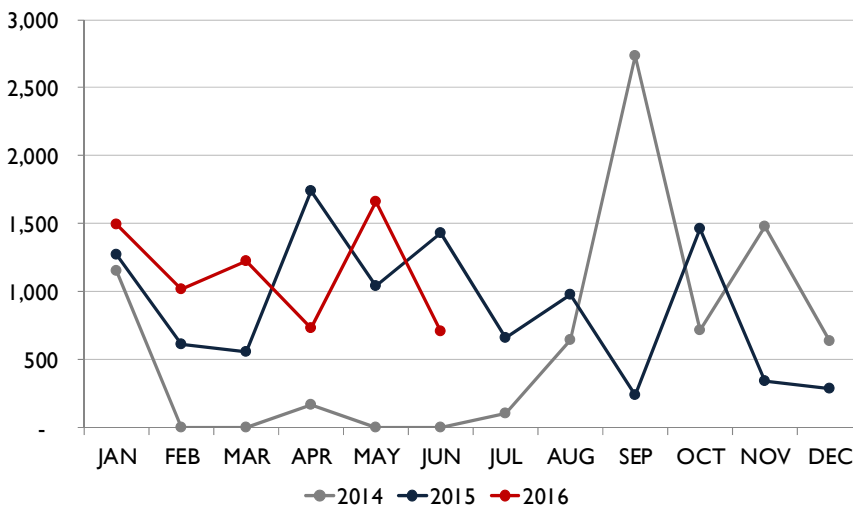
The cargo tonnage of DHL increased 68.8%, UPS was up 49.7% and FedEx reported an increase of 17.8% during the same period.

AIR CARRIER MARKET SHARE (passenger airlines)



	June-16	June-15	YOY Change
Alaska/Horizon	11.8%	10.4%	1.4
Allegiant Air	1.5%	1.3%	0.3
American	23.7%	24.8%	(1.1)
Delta	6.6%	6.6%	0.0
JetBlue	2.3%	1.8%	0.5
Southwest	42.2%	42.5%	(0.3)
United	10.5%	11.8%	(1.3)
Volaris	1.1%	0.8%	0.3
Others	0.2%	0.0%	0.2

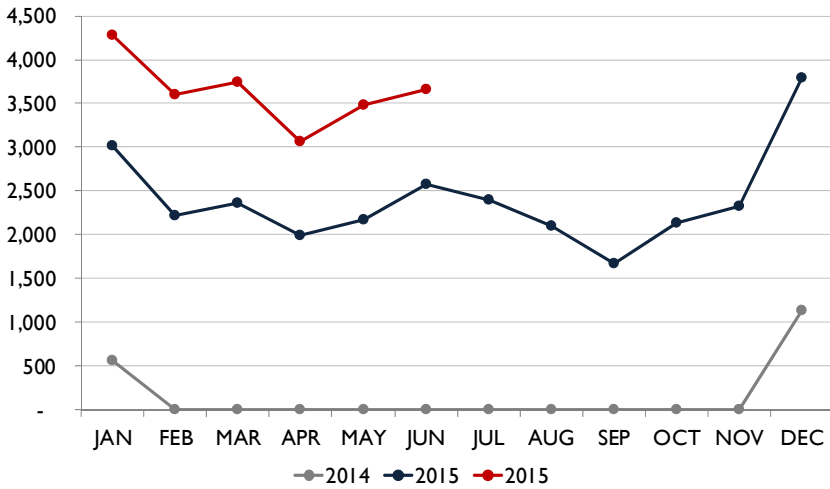
TOTAL CHARTER PASSENGERS



In June 2016, RNO served 709 charter passengers through the terminal. A total of six charter operations occurred during the month of June 2016.

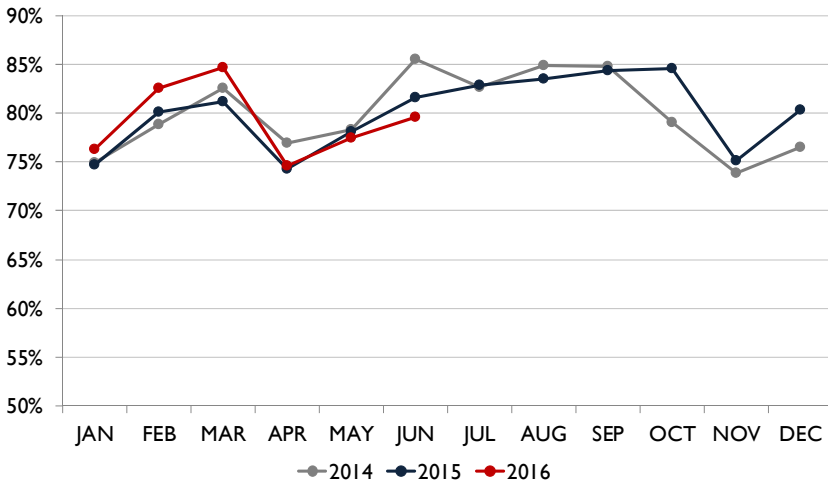


TOTAL INTERNATIONAL PASSENGERS



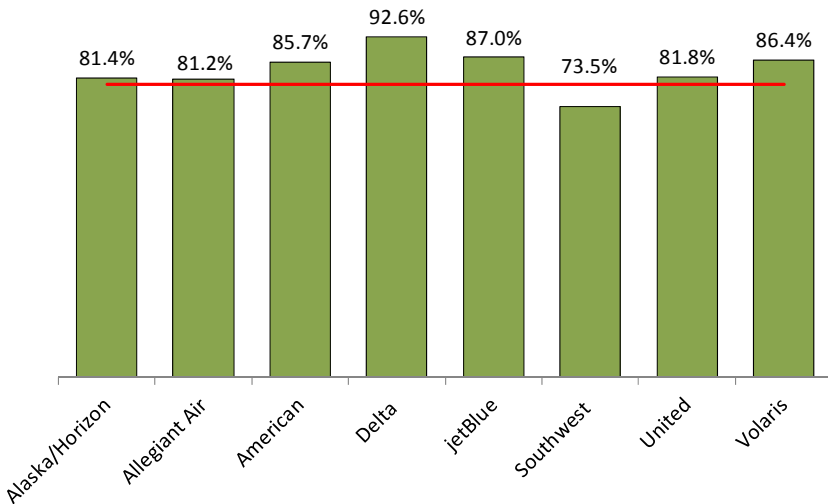
In June 2016, RNO served a total of 3,662 international passengers. Volaris operated three times a week scheduled flights between Reno and Guadalajara, Mexico.

AVERAGE ENPLANED LOAD FACTOR



In June 2016, the average enplaned load factor at RNO was 79.6%, a decrease of 2.0 pts. versus June 2015.

AVERAGE ENPLANED LOAD FACTOR BY AIRLINE

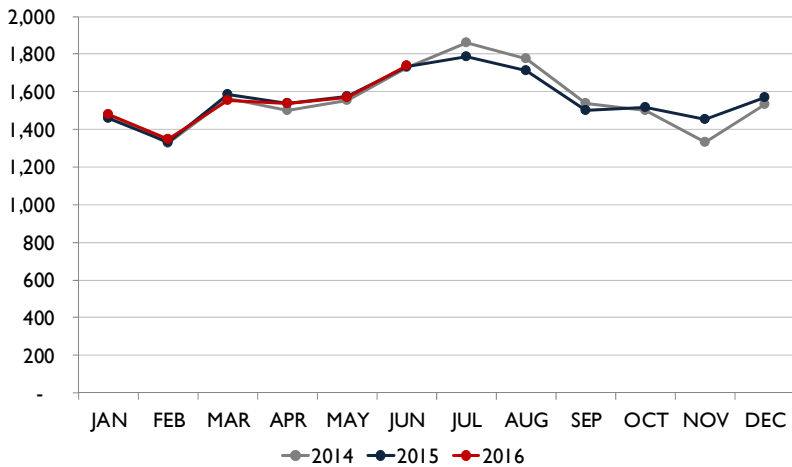


Airline	RNO	Network	Difference
Alaska	81.4%	86.0%	(4.6)
Allegiant Air	81.2%	83.9%	(2.7)
American	85.7%	84.9%	0.8
Delta	92.6%	87.7%	4.9
jetBlue	87.0%	86.2%	0.8
Southwest	73.5%	87.4%	(13.9)
United	81.8%	87.1%	(5.3)
Volaris	86.4%	88.9%	(2.5)

Source: Airline Performance Reports



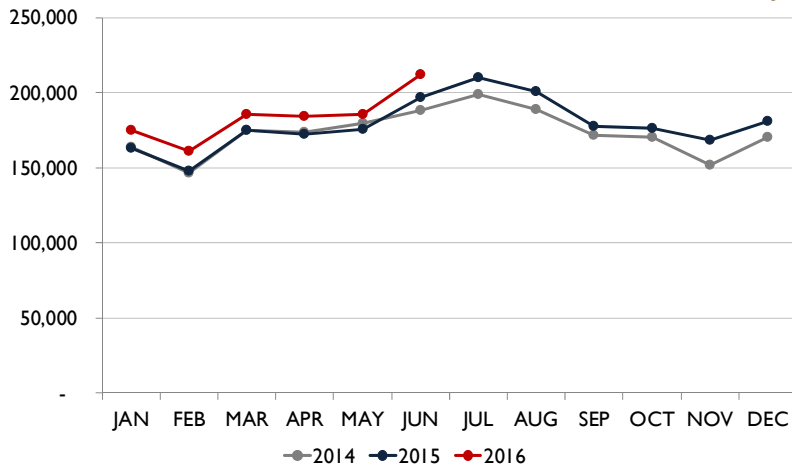
DEPARTURES (Scheduled and Actual)



In June 2016, RNO handled 1,739 departures on eight commercial airlines, an increase of 0.5% when compared to June 2015.

RNO was scheduled for 1,740 departures in June 2016.

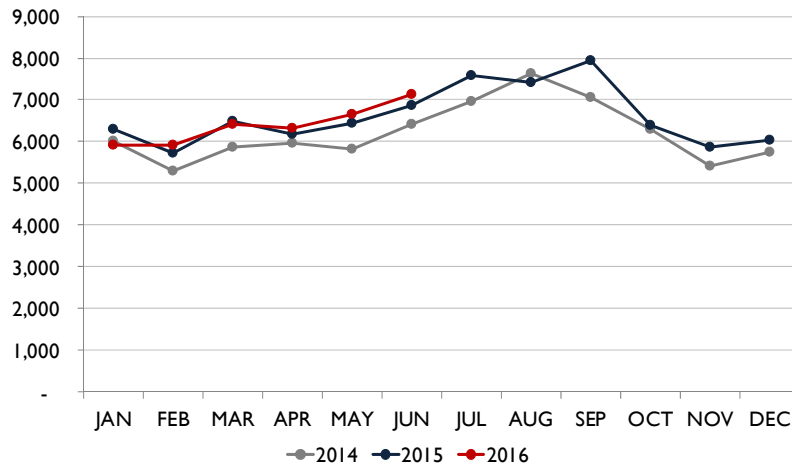
DEPARTING SEATS (Scheduled and Actual)



In June 2016, eight airlines provided 210,972 departing seats, an increase of 7.6% when compared to June 2015.

RNO was scheduled for 211,784 departing seats in June 2016.

TOTAL OPERATIONS



A total of 7,123 operations were handled at RNO in June 2016, an increase of 3.8% when compared to June 2015. Total operations include: Air Carrier, Air Taxi, General Aviation and Military operations as reported by the FAA.



Recent and Upcoming Schedule Changes

Allegiant Air

- The non-stop flight between Reno and Las Vegas operates on Wednesdays, Fridays and Sundays.
- The new non-stop flight between Reno and Los Angeles operates on Thursdays and Sundays.

American Airlines

- On June 3, 2016, the number of flights between Reno and Dallas Fort Worth International Airport increased from twice a day to three times a day on Mondays, Tuesdays, Fridays and Saturdays. The additional flight will operate until August 23, 2016.
- On June 2, 2016, the number of non-stop flights between Reno and Los Angeles increased from four times a day to five times a day. The additional flight will operate until August 23, 2016.
- On June 2, 2016, the number of non-stop flights between Reno and Chicago increased from once a day to twice a day. The additional flight will operate until August 22, 2016, for the summer season.
- On June 9, 2016, the number of non-stop flights between Reno and Phoenix increased from three flights a day to four flights a day. The additional flight will operate on a six day schedule up until August 7, 2016. This flight will also operate on the 11th, 12th and 14th during the month of August 2016.

Delta Air Lines

- The seasonal non-stop flight between Reno and Minneapolis operates until August 20, 2016. The airline offers this route on Saturdays only. Initially, it was schedule to operate until August 27, 2016. The flight will return during the winter season.
- Starting August 26, 2016, Delta Air Lines will increase the number of daily non-stop flights between Reno and Salt Lake City from three times a day to four times a day. The additional flight was initially schedule to begin in September.

JetBlue Airways

- The non-stop flight between Reno and New York City will operate daily until September 6, 2016. The flight reduces to a four-times a week schedule on September 8, 2016 (Thursday, Friday, Sunday, Monday) and returns to a daily schedule from December 15, 2016, until January 2017.

United Airlines

- The seasonal twice a week non-stop flight between Reno and Houston returned on June 11, 2016, for the summer season and will operate on Saturdays and Sundays only.
- Starting July 5, 2016, United Airlines increased the number of non-stop flights between Reno and Denver from twice a day to three times a day. The frequency will then be increased to four times a day in September, before returning to a twice a day schedule in November.

Volaris

- The non-stop flight between Reno and Guadalajara, Mexico operates on Mondays, Wednesdays and Fridays.



Reno-Tahoe International Airport

Total Passengers						
June-16						
	Passengers		% Diff.	Passengers		% Diff.
	2014	2015		2016		
JAN	241,181	246,571	2.2%	259,868	5.4%	
FEB	228,035	234,763	3.0%	269,807	14.9%	
MAR	278,172	277,477	-0.2%	311,974	12.4%	
1st Quarter	747,388	758,811	1.5%	841,649	10.9%	
APR	266,800	256,823	-3.7%	273,707	6.6%	
MAY	282,277	276,969	-1.9%	288,763	4.3%	
JUN	316,720	319,309	0.8%	338,954	6.2%	
2nd Quarter	865,797	853,101	-1.5%	901,424	5.7%	
JUL	332,242	350,823	5.6%			
AUG	318,965	336,948	5.6%			
SEP	284,931	297,299	4.3%			
3rd Quarter	936,138	985,070	5.2%			
OCT	266,701	295,749	10.9%			
NOV	225,384	253,494	12.5%			
DEC	263,682	286,105	8.5%			
4th Quarter	755,767	835,675	10.6%			
TOTAL	3,305,090	3,432,657	3.9%			
YTD Total		1,611,912		1,743,073	8.1%	

Total Enplaned Passengers				
June-16				
Month	2014	2015	2016	% Diff.
JAN	121,700	124,505	130,546	4.9%
FEB	113,777	117,750	133,669	13.5%
MAR	142,542	141,314	156,542	10.8%
APR	132,183	128,088	136,453	6.5%
MAY	139,349	137,132	144,228	5.2%
JUN	158,827	159,989	168,313	5.2%
JUL	162,090	172,266		
AUG	159,664	166,935		
SEP	147,458	151,127		
OCT	134,946	150,567		
NOV	112,573	125,712		
DEC	128,295	142,253		
TOTAL	1,653,404	1,717,638		
YTD Total		808,778	869,751	7.5%

Total Deplaned Passengers				
June-16				
Month	2014	2015	2016	% Diff.
JAN	119,481	122,066	129,322	5.9%
FEB	114,258	117,013	136,138	16.3%
MAR	135,630	136,163	155,432	14.2%
APR	134,617	128,735	136,453	6.0%
MAY	142,928	139,837	144,535	3.4%
JUN	157,893	159,320	170,641	7.1%
JUL	170,152	178,557		
AUG	159,307	170,013		
SEP	137,480	146,172		
OCT	131,755	145,182		
NOV	112,811	127,782		
DEC	135,387	143,852		
TOTAL	1,651,699	1,714,692		
YTD Total		803,134	872,521	8.6%

Total Cargo						
June-16						
	2014	2015	% Diff.	2016		% Diff.
	Cargo in Pounds			Pounds	Metric	
JAN	10,303,380	10,113,421	-1.8%	11,939,003	5,415	18.1%
FEB	9,486,697	9,418,781	-0.7%	10,947,416	4,965	16.2%
MAR	9,758,391	10,381,009	6.4%	13,004,808	5,898	25.3%
1st Quarter	29,548,468	29,913,211	1.2%	35,891,227	16,277	20.0%
APR	9,876,465	10,416,248	5.5%	12,341,233	5,597	18.5%
MAY	10,269,963	10,634,389	3.5%	12,088,321	5,482	13.7%
JUN	9,679,744	10,595,645	9.5%	13,432,224	6,092	26.8%
2nd Quarter	29,826,172	31,646,282	6.1%	37,861,778	17,171	19.6%
JUL	10,863,843	11,775,072	8.4%			
AUG	10,853,726	11,031,470	1.6%			
SEP	10,127,014	12,360,393	22.1%			
3rd Quarter	31,844,583	35,166,935	10.4%			
OCT	11,429,538	12,160,586	6.4%			
NOV	10,664,398	11,657,012	9.3%			
DEC	15,776,073	17,907,699	13.5%			
4th Quarter	37,870,009	41,725,297	10.2%			
TOTAL	129,089,232	138,451,725	7.3%			
YTD Total		61,559,493		73,753,005	33,448	19.8%

Enplaned Passengers & Load Factor				
Airline	Enplaned PAX	Jun-16	Jun-15	Diff.
Alaska/Horizon	19,913	81.4%	82.3%	-1.0
Allegiant Air	2,638	81.2%	74.0%	7.2
American	40,333	85.7%	87.1%	-1.4
Delta	11,501	92.6%	87.0%	5.6
jetBlue	3,914	87.0%	89.2%	-2.2
Southwest	70,435	73.5%	75.6%	-2.2
United	17,220	81.8%	91.2%	-9.4
Volaris	2,010	86.4%	85.2%	1.1

Source: RNO Monthly Flight Activity Reports

