



Passenger and Cargo Statistics Report

Reno-Tahoe International Airport
July 2016



**Reno-Tahoe
Airport Authority**

U.S. DOMESTIC INDUSTRY OVERVIEW FOR JULY 2016

All RNO Carriers Domestic Systemwide – year over year comparison

Average Load Factor:	87.2% down 1.2 pts.
Number of Flights *:	Up 0.7%
Capacity of Seats *:	Up 2.7%
Crude Oil Average:	\$44.65 per barrel in July 2016 vs. \$50.90 per barrel in July 2015

RNO OVERVIEW FOR JULY 2016 – year over year comparison

Total Passengers:	Up 1.7%
Avg. Enplaned Load Factor:	81.9%, down 0.9 pts.
Actual Departures:	Up 2.1%
Actual Departing Seats:	Up 4.1%
Total Cargo:	Up 7.8%

*Source: RNO Monthly Flight Activity Reports; * INNOVATA Flight Schedule via Diio*

JULY 2016 SUMMARY

Reno-Tahoe International Airport (RNO) served 356,768 passengers in July 2016, which is up 1.7% versus July 2015. The airport experienced positive passenger growth for the 14th consecutive month with respect to year over year monthly increases. During the first seven months of 2016, RNO served 2,099,841 passengers, representing an increase of 7.0% when compared to the same period last year.

In July 2016, RNO was served by eight airlines providing 1,809 departures to 20 non-stop destinations (23 non-stop destinations if seasonal and new announced flights are included). At RNO, total seat capacity increased 4.1% and flights increased 2.1% when compared to July 2015.

In July 2016, RNO handled 12,691,135 pounds of air cargo, an increase of 7.8% versus July 2015. During the first seven months of 2016, RNO handled 86,444,140 pounds of air cargo, an increase of 17.9% when compared to the same period last year.

Southwest Airlines began non-stop flights between RNO and Oakland International Airport three times a day on June 5, 2016.

Allegiant Air began non-stop flights between RNO and Los Angeles International Airport twice a week on June 9, 2016.

JetBlue Airways began non-stop flights between RNO and Long Beach Airport on August 15, 2016, providing passengers another option for travel between Reno and the Los Angeles basin.

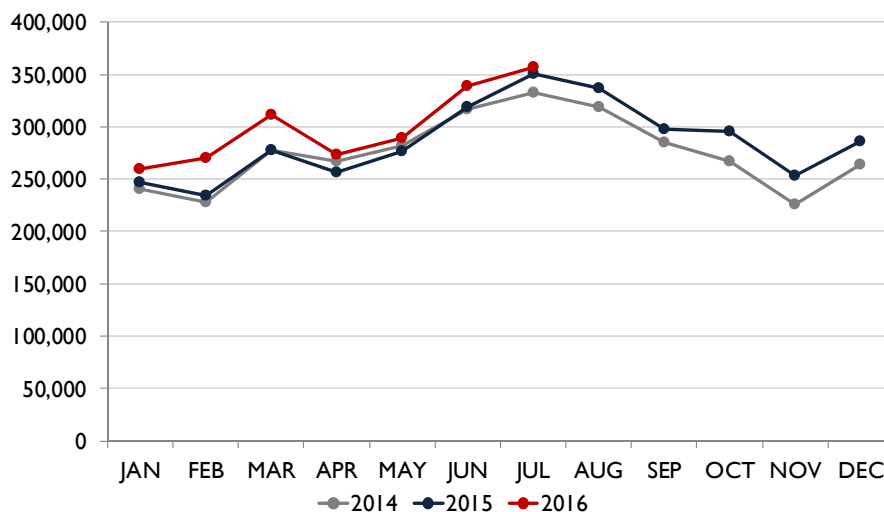


Starting December 19, 2016, Delta Air Lines will begin non-stop flights between Reno and Atlanta International Airport. The Atlanta-Reno flight will begin as three times per week service during the holidays, from December 19, 2016, until January 3, 2017. The flight reduces to once a week service, Saturday arrival and Sunday departure, on January 7, 2017. The airline will utilize a 183-seat Boeing 757 on this route.

Starting January 7, 2017, Southwest Airlines will begin a once a week seasonal non-stop flight between RNO and Dallas Love Field Airport (DAL). The flight will depart Reno at 11:00 am and arrive in Dallas at 4:05 pm. The flight will depart Dallas at 11:00 am and arrive in Reno at 12:30 pm (flight time changes in March 2017). The airline will offer this service on Saturdays. Starting March 12, 2017, Southwest Airlines will increase the number of weekly flights between RNO and DAL from one flight a week to two flights a week. The flight will depart Reno at 3:05 pm and arrive in Dallas at 8:15 pm. The flight will depart Dallas at 1:50 pm and arrive in Reno at 3:20 pm. The additional flight will operate on Sundays.

Starting February 15, 2017, Allegiant Air will increase the number of weekly flights between RNO and Las Vegas from three times a week to six times a week. The airline will provide this service from Sunday through Friday.

TOTAL PASSENGERS



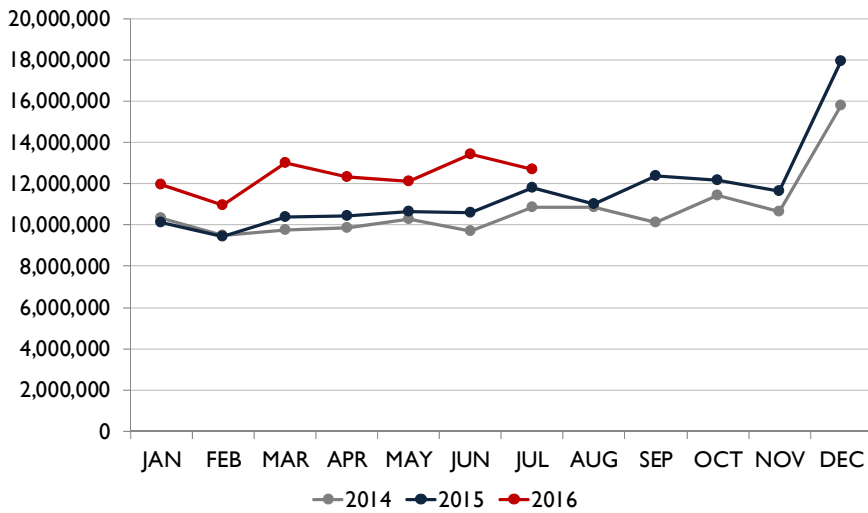
Southwest Airlines, the largest carrier at RNO, served 146,217 passengers during the month of July 2016, an increase of 0.5% when compared to July 2015.

In July 2016, Allegiant Air reported a passenger growth of 42.6%, Alaska Airlines was up 16.3% and Delta Air Lines reported an increase of 6.7% when compared to the same period last year. Volaris served 3,703 passengers during the month of July 2016, an increase of 54.2% when compared to July 2015.

United Airlines reported a year-over-year passenger decrease of 5.7%, American Airlines was down 3.8% and JetBlue reported a decrease of 2.4% when compared to the same period last year. Reduced capacity on United Airlines and JetBlue at RNO resulted in lower passenger numbers on both airlines. In July 2016, United Airlines' seat capacity was down 9.5%, whereas JetBlue operated two less flights when compared to July 2015.



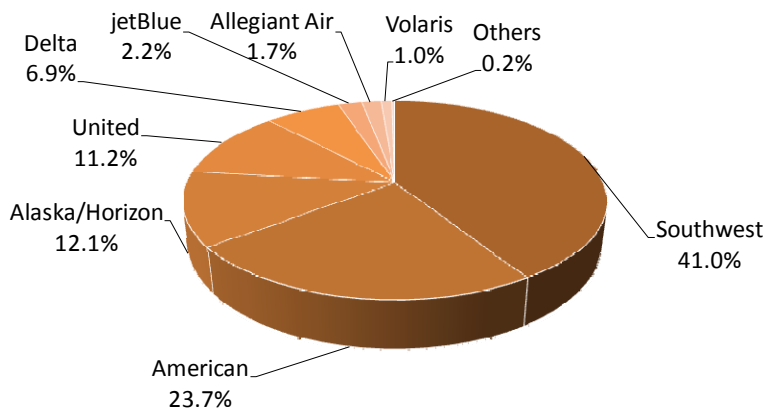
AIR CARGO



In July 2016, RNO handled 12,691,135 pounds of air cargo, representing a year-over-year increase of 7.8%.

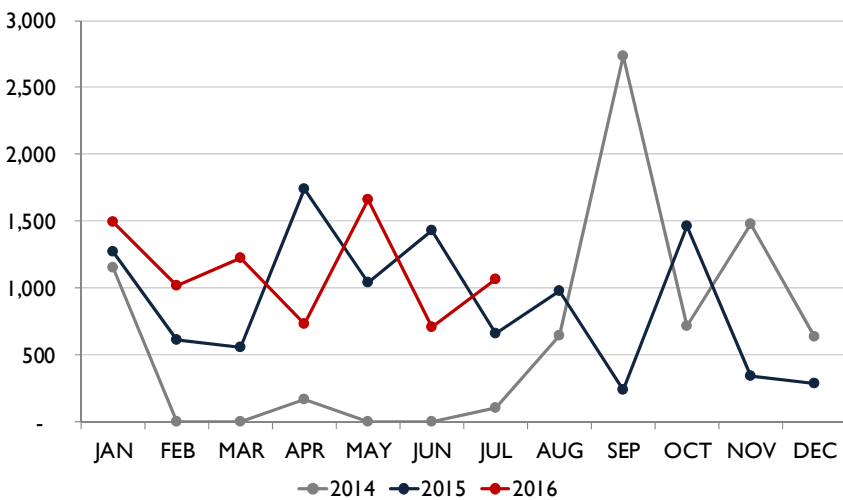
The cargo tonnage of DHL increased 40.5% and UPS grew 28.8%. FedEx reported a decrease of 1.8% during the same period.

AIR CARRIER MARKET SHARE (passenger airlines)



	July-16	July-15	YOY Change
Alaska/Horizon	12.1%	10.6%	1.5
Allegiant Air	1.7%	1.2%	0.5
American	23.7%	25.1%	(1.4)
Delta	6.9%	6.5%	0.3
jetBlue	2.2%	2.3%	(0.1)
Southwest	41.0%	41.5%	(0.5)
United	11.2%	12.1%	(0.9)
Volaris	1.0%	0.7%	0.4
Others	0.2%	0.1%	0.1

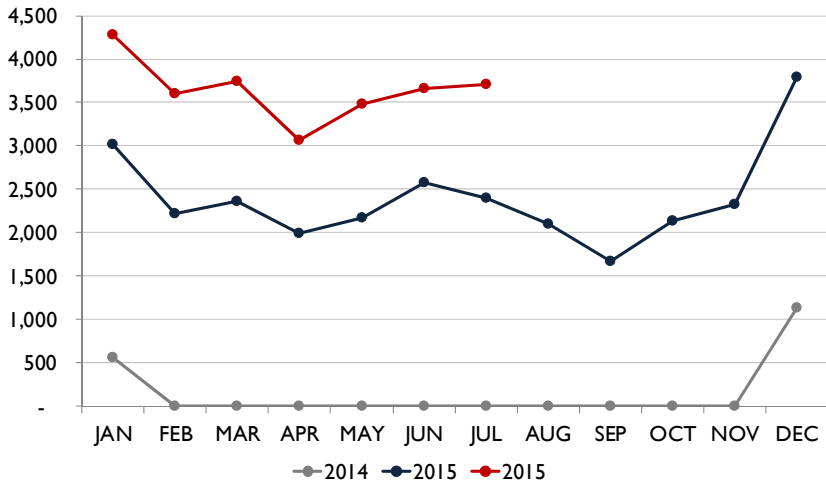
TOTAL CHARTER PASSENGERS



In July 2016, RNO served 1,069 charter passengers through the terminal.

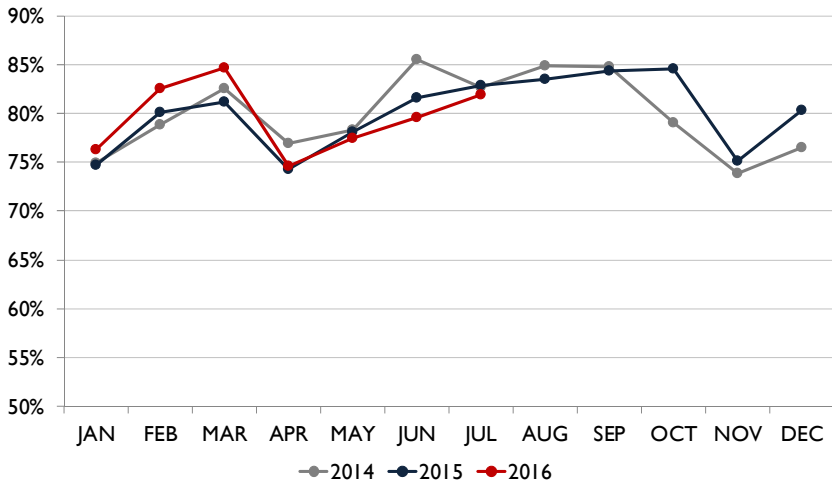


TOTAL INTERNATIONAL PASSENGERS



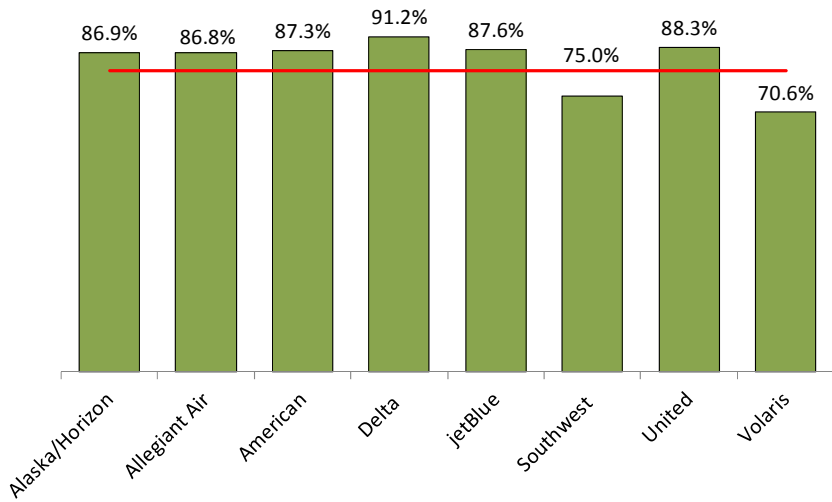
In July 2016, RNO served a total of 3,703 international passengers. Volaris operated three times a week scheduled flights between Reno and Guadalajara, Mexico.

AVERAGE ENPLANED LOAD FACTOR



In July 2016, the average enplaned load factor at RNO was 81.9%, a decrease of 0.9 pts. versus July 2015.

AVERAGE ENPLANED LOAD FACTOR BY AIRLINE

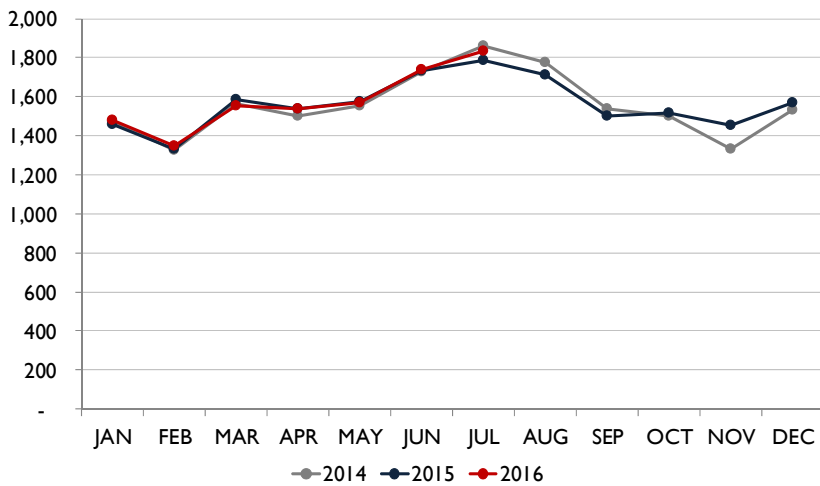


Average Enplaned Load Factor July 2016			
Airline	RNO	Network	Difference
Alaska	86.9%	87.2%	(0.3)
Allegiant Air	86.8%	88.3%	(1.5)
American	87.3%	85.2%	2.1
Delta	91.2%	87.1%	4.1
JetBlue	87.6%	85.1%	2.5
Southwest	75.0%	86.9%	(11.9)
United	88.3%	87.5%	0.8
Volaris	70.6%	88.9%	(18.3)

Source: Airline Performance Reports

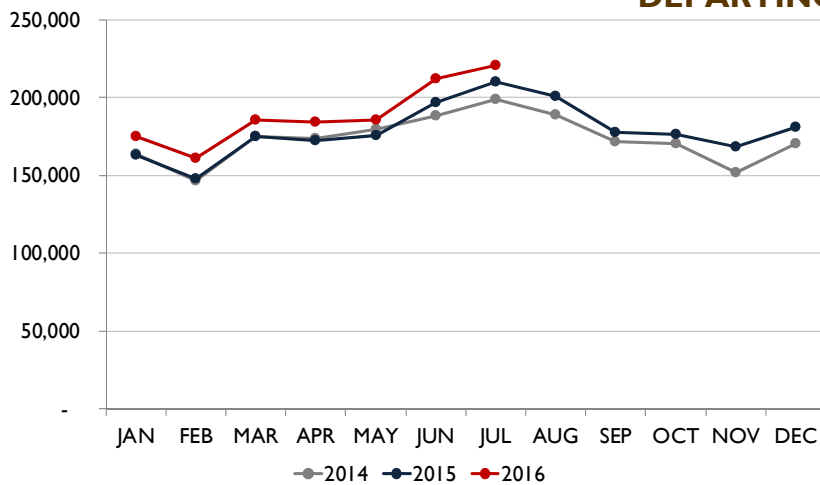


DEPARTURES



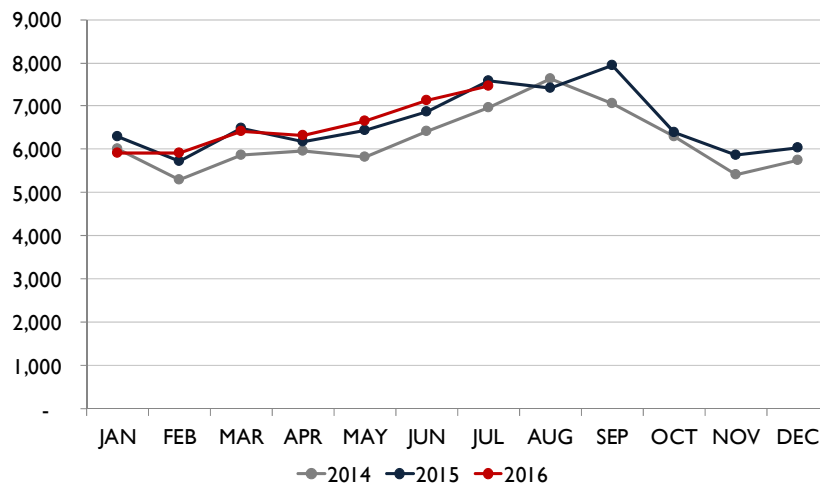
In July 2016, RNO handled 1,809 departures on eight commercial airlines, an increase of 2.1% when compared to July 2015. This doesn't include charter operations on non-incumbent carriers.

DEPARTING SEATS



In July 2016, eight airlines provided 216,380 departing seats, an increase of 4.1% when compared to July 2015. This doesn't include charter operations on non-incumbent carriers.

TOTAL OPERATIONS



A total of 7,455 operations were handled at RNO in July 2016, a decrease of 1.6% when compared to July 2015. Total operations include: Air Carrier, Air Taxi, General Aviation and Military operations as reported by the FAA.



Recent and Upcoming Schedule Changes

Allegiant Air

- The non-stop flight between Reno and Las Vegas operates on Wednesdays, Fridays and Sundays.
- The new non-stop flight between Reno and Los Angeles operates on Thursdays and Sundays.

American Airlines (seasonal reduction)

- Starting August 24, 2016, American Airlines reduced the number of daily non-stop flights between Reno and Los Angeles from five flights a day to four flights a day. The fifth daily flight on this route is expected to return for the winter holidays.
- Starting August 22, 2016, the airline reduced the number of daily non-stop flights between Reno and Chicago from twice a day to once a day.
- Starting August 23, 2016, the airline reduced the number of daily non-stop flights between Reno and Dallas from three times a day to twice a day. The third daily flight on this route is expected to return for the winter holidays.

Delta Air Lines

- The seasonal non-stop flight between Reno and Minneapolis operated until August 20, 2016. The flight will return during the winter holidays.
- Starting August 28, 2016, Delta Air Lines increased the number of daily non-stop flights between Reno and Salt Lake City from three times a day to four times a day.

JetBlue Airways

- The non-stop flight between Reno and New York City will operate daily until September 6, 2016. The flight reduces to a four-times a week schedule on September 8, 2016 (Thursday, Friday, Sunday, Monday) and returns to a daily schedule from December 15, 2016, until January 2017.

United Airlines

- The seasonal twice a week non-stop flight between Reno and Houston operated until August 14, 2016 for the summer season. This flight is scheduled to return during the winter holidays.
- Starting July 5, 2016, United Airlines increased the number of non-stop flights between Reno and Denver from twice a day to three times a day. The frequency will be increased to four times a day on September 11, 2016, before returning to a twice a day schedule in November.

Volaris

- The non-stop flight between Reno and Guadalajara, Mexico operates on Mondays, Wednesdays and Fridays. The airline will increase the frequency on this route to four times a week from December 20, 2016, until January 3, 2017. The additional flight will operate on Tuesdays.



Reno-Tahoe International Airport

Total Passengers July-16					
	Passengers		% Diff.	Passengers	
	2014	2015		2016	% Diff.
JAN	241,181	246,571	2.2%	259,868	5.4%
FEB	228,035	234,763	3.0%	269,807	14.9%
MAR	278,172	277,477	-0.2%	311,974	12.4%
1st Quarter	747,388	758,811	1.5%	841,649	10.9%
APR	266,800	256,823	-3.7%	273,707	6.6%
MAY	282,277	276,969	-1.9%	288,763	4.3%
JUN	316,720	319,309	0.8%	338,954	6.2%
2nd Quarter	865,797	853,101	-1.5%	901,424	5.7%
JUL	332,242	350,823	5.6%	356,768	1.7%
AUG	318,965	336,948	5.6%		
SEP	284,931	297,299	4.3%		
3rd Quarter	936,138	985,070	5.2%		
OCT	266,701	295,749	10.9%		
NOV	225,384	253,494	12.5%		
DEC	263,682	286,105	8.5%		
4th Quarter	755,767	835,348	10.5%		
TOTAL	3,305,090	3,432,330	3.8%		
YTD Total		1,962,735		2,099,841	7.0%

Total Enplaned Passengers July-16				
Month	2014	2015	2016	% Diff.
JAN	121,700	124,505	130,546	4.9%
FEB	113,777	117,750	133,669	13.5%
MAR	142,542	141,314	156,542	10.8%
APR	132,183	128,088	136,453	6.5%
MAY	139,349	137,132	144,228	5.2%
JUN	158,827	159,989	168,313	5.2%
JUL	162,090	172,266	177,619	3.1%
AUG	159,664	166,935		
SEP	147,458	151,127		
OCT	134,946	150,567		
NOV	112,573	125,712		
DEC	128,295	142,253		
TOTAL	1,653,404	1,717,638		
YTD Total		981,044	1,047,370	6.8%

Total Deplaned Passengers				
Month	2014	2015	2016	% Diff.
JAN	119,481	122,066	129,322	5.9%
FEB	114,258	117,013	136,138	16.3%
MAR	135,630	136,163	155,432	14.2%
APR	134,617	128,735	137,254	6.6%
MAY	142,928	139,837	144,535	3.4%
JUN	157,893	159,320	170,641	7.1%
JUL	170,152	178,557	179,149	0.3%
AUG	159,301	170,013		
SEP	137,473	146,172		
OCT	131,755	145,182		
NOV	112,811	127,782		
DEC	135,387	143,852		
TOTAL	1,651,686	1,714,692		
YTD Total		981,691	1,052,471	7.2%

Total Cargo July-16						
	2014	2015	% Diff.	2016		% Diff.
	Cargo in Pounds			Pounds	Metric	
JAN	10,303,380	10,113,421	-1.8%	11,939,003	5,415	18.1%
FEB	9,486,697	9,418,781	-0.7%	10,947,416	4,965	16.2%
MAR	9,758,391	10,381,009	6.4%	13,004,808	5,898	25.3%
1st Quarter	29,548,468	29,913,211	1.2%	35,891,227	16,277	20.0%
APR	9,876,465	10,416,248	5.5%	12,341,233	5,597	18.5%
MAY	10,269,963	10,634,389	3.5%	12,088,321	5,482	13.7%
JUN	9,679,744	10,595,645	9.5%	13,432,224	6,092	26.8%
2nd Quarter	29,826,172	31,646,282	6.1%	37,861,778	17,171	19.6%
JUL	10,863,843	11,775,072	8.4%	12,691,135	5,756	7.8%
AUG	10,853,726	11,031,470	1.6%			
SEP	10,127,014	12,360,393	22.1%			
3rd Quarter	31,844,583	35,166,935	10.4%			
OCT	11,429,538	12,160,586	6.4%			
NOV	10,664,398	11,657,012	9.3%			
DEC	15,776,084	17,907,699	13.5%			
4th Quarter	37,870,020	41,725,297	10.2%			
TOTAL	129,089,243	138,451,725	7.3%			
YTD Total		73,334,565		86,444,140	39,204	17.9%

Enplaned Passengers & Load Factor				
Airline	Enplaned PAX	Jul-16	Jul-15	Diff.
Alaska/Horizon	21,591	86.9%	88.5%	-1.6
Allegiant Air	3,092	86.8%	81.2%	5.6
American	42,408	87.3%	87.2%	0.1
Delta	11,893	91.2%	90.6%	0.6
jetBlue	3,810	87.6%	81.3%	6.3
Southwest	72,899	75.0%	78.2%	-3.1
United	19,887	88.3%	84.4%	3.9
Volaris	1,618	70.6%	65.1%	5.5

Source: RNO Monthly Flight Activity Reports

