



# Passenger and Cargo Statistics Report

**Reno-Tahoe International Airport**  
August 2016



**Reno-Tahoe  
Airport Authority**

## U.S. DOMESTIC INDUSTRY OVERVIEW FOR AUGUST 2016

### All RNO Carriers Domestic Systemwide – year over year comparison

Average Load Factor:	85.6% down 1.5 pts.
Number of Flights *:	Up 1.7%
Capacity of Seats *:	Up 4.0%
Crude Oil Average:	\$44.72 per barrel in August 2016 vs. \$42.87 per barrel in August 2015

### RNO OVERVIEW FOR AUGUST 2016 – year over year comparison

Total Passengers:	Up 3.9%
Avg. Enplaned Load Factor:	77.9%, down 5.6 pts.
Actual Departures:	Up 7.6%
Actual Departing Seats:	Up 9.6%
Total Cargo:	Up 26.7%

Source: RNO Monthly Flight Activity Reports; \* INNOVATA Flight Schedule via Diio

## AUGUST 2016 SUMMARY

Reno-Tahoe International Airport (RNO) served 349,934 passengers in August 2016, which is up 3.9% versus August 2015. The airport experienced positive passenger growth for the 15th consecutive month with respect to year over year monthly increases. During the first eight months of 2016, RNO served 2,449,775 passengers, representing an increase of 6.5% when compared to the same period last year.

In August 2016, RNO was served by eight airlines providing 1,835 departures to 20 non-stop destinations (23 non-stop destinations if seasonal and new announced flights are included). At RNO, total seat capacity increased 9.6% and flights increased 7.6% when compared to August 2015.

In August 2016, RNO handled 13,977,442 pounds of air cargo, an increase of 26.7% versus August 2015. During the first eight months of 2016, RNO handled 100,421,582 pounds of air cargo, an increase of 19.0% when compared to the same period last year.

Southwest Airlines began non-stop flights between RNO and Oakland International Airport three times a day on June 5, 2016.

Allegiant Air began non-stop flights between RNO and Los Angeles International Airport twice a week on June 9, 2016.

JetBlue Airways began non-stop flights between RNO and Long Beach Airport on August 15, 2016, providing passengers another option for travel between Reno and the Los Angeles basin.

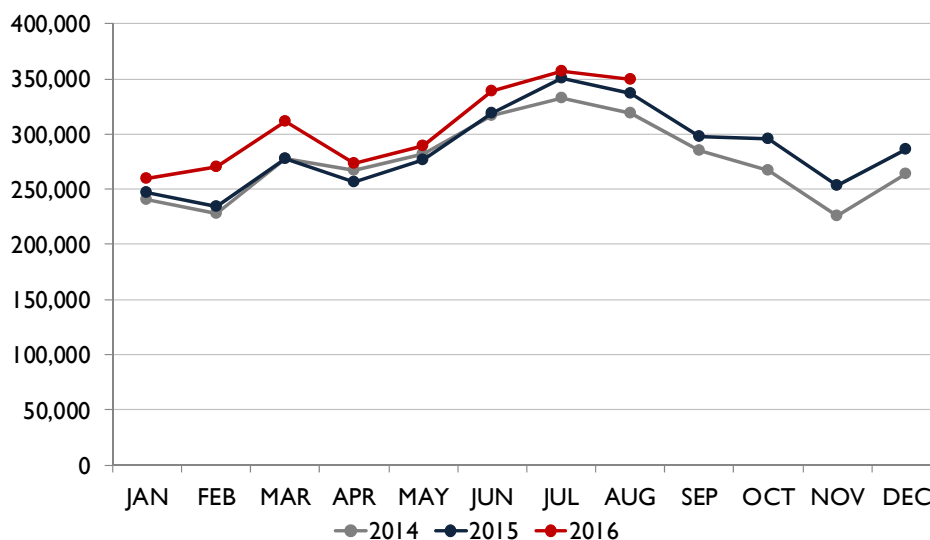


Starting December 19, 2016, Delta Air Lines will begin non-stop seasonal flights between Reno and Atlanta International Airport. The Atlanta-Reno flight will begin as a three times per week service during the holidays, from December 19, 2016, until January 3, 2017. The flight reduces to a once a week schedule, Saturday arrival and Sunday departure, on January 7, 2017. The airline will utilize a 183-seat Boeing 757 on this route.

Starting January 7, 2017, Southwest Airlines will begin a once a week seasonal non-stop flight between RNO and Dallas Love Field Airport (DAL). The flight will depart Reno at 11:00 am and arrive in Dallas at 4:05 pm. The flight will depart Dallas at 11:00 am and arrive in Reno at 12:30 pm (flight time changes in March 2017). The airline will offer this service on Saturdays. Starting March 12, 2017, Southwest Airlines will increase the number of weekly flights between RNO and DAL from one flight a week to two flights a week. The flight will depart Reno at 3:05 pm and arrive in Dallas at 8:15 pm. The flight will depart Dallas at 1:50 pm and arrive in Reno at 3:20 pm. The additional flight will operate on Sundays.

Starting February 15, 2017, Allegiant Air will increase the number of weekly flights between RNO and Las Vegas from three times a week to six times a week. The airline will provide this service from Sunday through Friday.

### TOTAL PASSENGERS



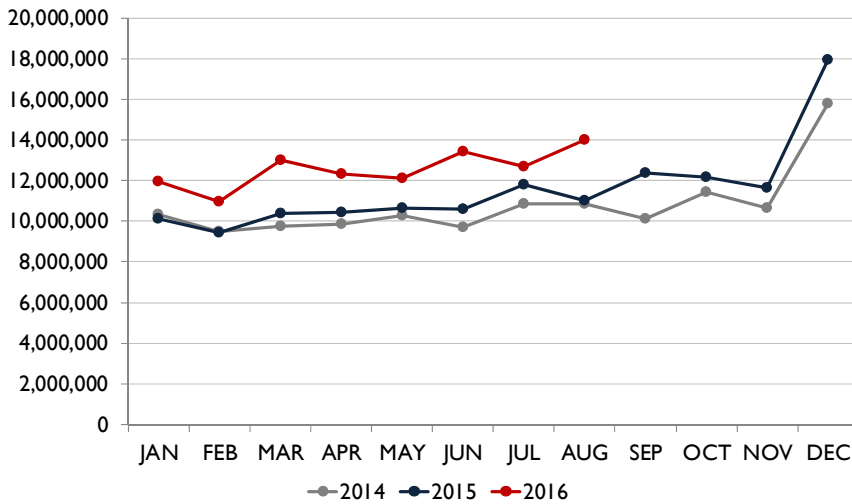
Southwest Airlines, the largest carrier at RNO, served 143,440 passengers during the month of August 2016, an increase of 2.2% when compared to August 2015.

In August 2016, JetBlue Airways reported a passenger growth of 60.1% (mainly due to the new RNO-Long Beach flight), Allegiant Air was up 59.1%, Alaska Airlines grew 14.9% and United Airlines reported an increase of 1.1% when compared to the same period last year. Volaris served 3,773 passengers during the month of August 2016, an increase of 79.3% when compared to August 2015.

American Airlines reported a year-over-year passenger decrease of 6.7%, due to a reduction in RNO-PHX schedule, and Delta Air Lines reported a decrease of 0.8% when compared to the same period last year.



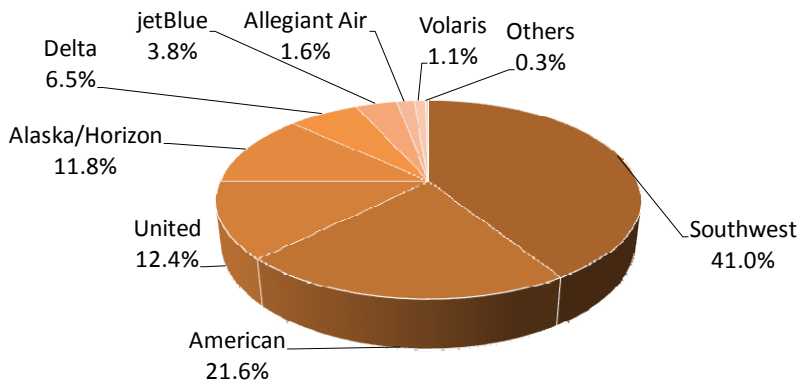
## AIR CARGO



In August 2016, RNO handled 13,977,442 pounds of air cargo, representing a year-over-year increase of 26.7%.

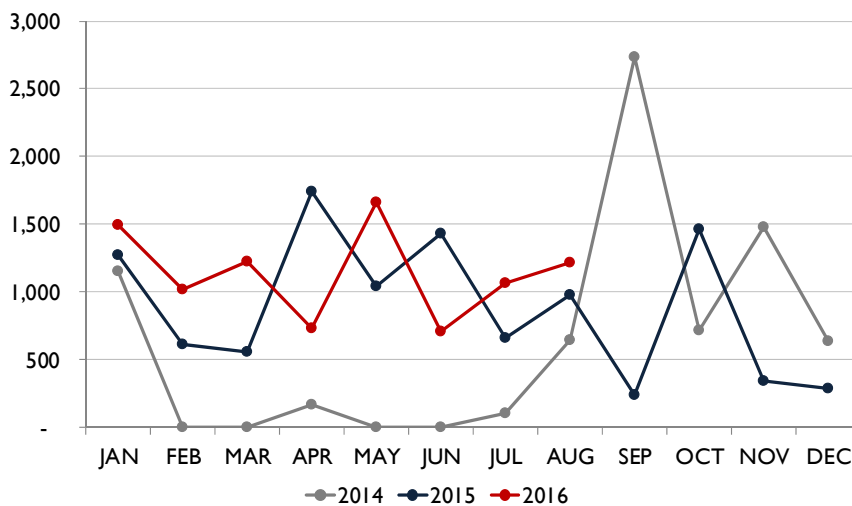
The cargo tonnage of DHL increased 92.9%, UPS grew 45.8% and FedEx reported an increase of 16.1% during the same period.

## AIR CARRIER MARKET SHARE (passenger airlines)



	August-16	August-15	YOY Change
Alaska/Horizon	11.8%	10.7%	1.1
Allegiant Air	1.6%	1.0%	0.5
American	21.6%	24.0%	(2.4)
Delta	6.5%	6.8%	(0.3)
JetBlue	3.8%	2.5%	1.3
Southwest	41.0%	41.7%	(0.7)
United	12.4%	12.8%	(0.3)
Volaris	1.1%	0.6%	0.5
Others	0.3%	0.0%	0.3

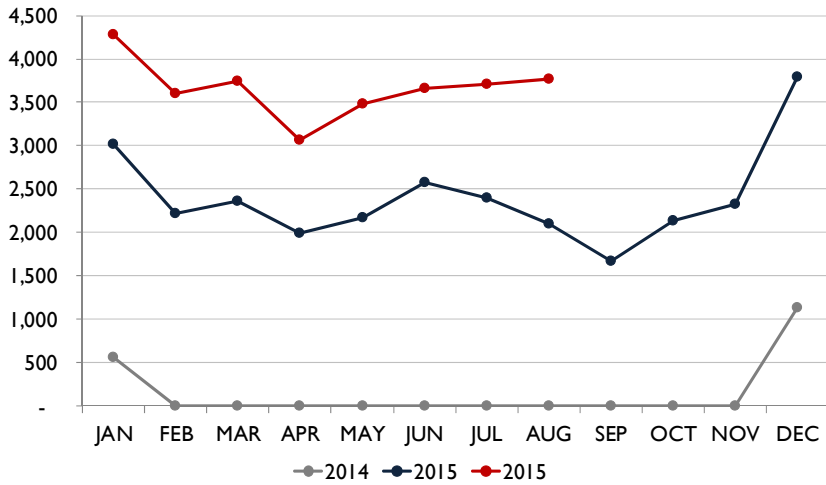
## TOTAL CHARTER PASSENGERS



In August 2016, RNO served 1,219 charter passengers through the terminal.

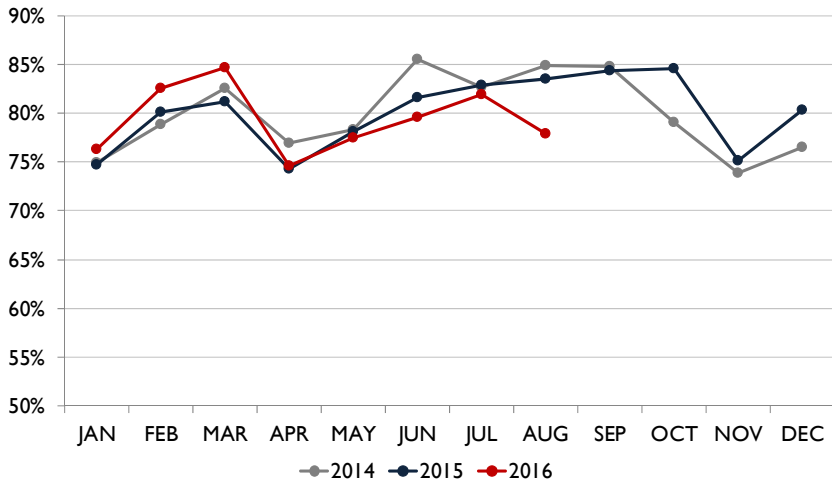


## TOTAL INTERNATIONAL PASSENGERS



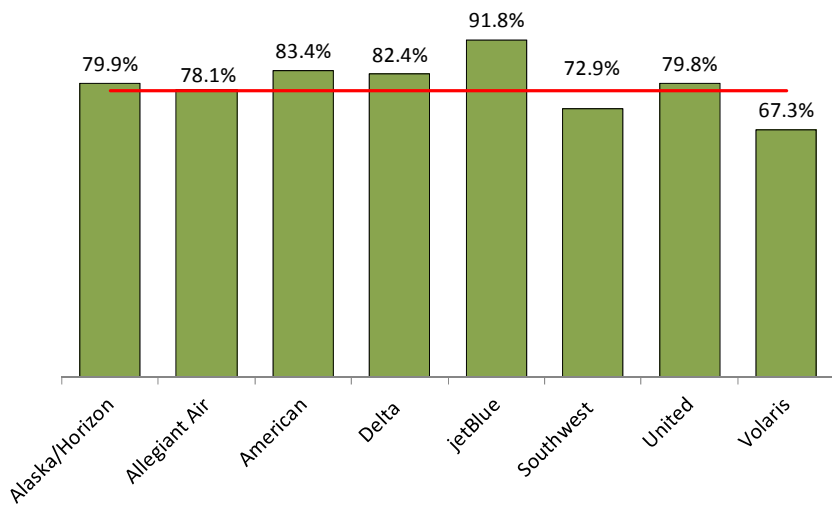
In August 2016, RNO served a total of 3,773 international passengers. Volaris operated three times a week scheduled flights between Reno and Guadalajara, Mexico.

## AVERAGE ENPLANED LOAD FACTOR



In August 2016, the average enplaned load factor at RNO was 77.9%, a decrease of 5.6 pts. versus August 2015.

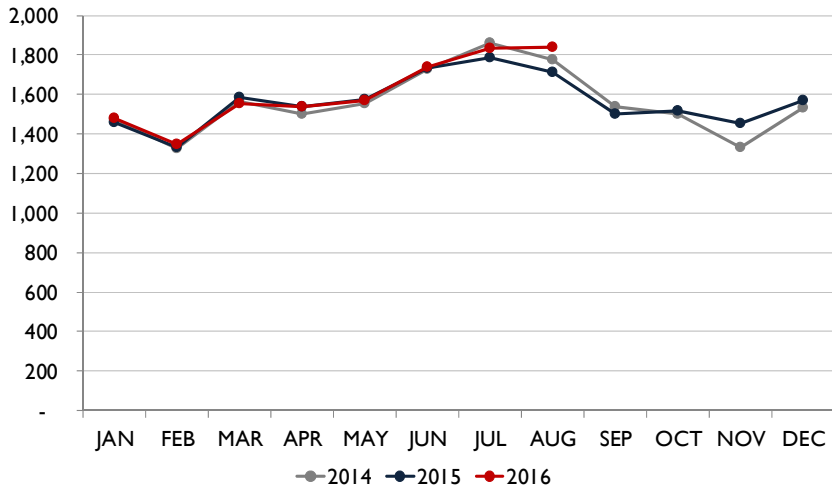
## AVERAGE ENPLANED LOAD FACTOR BY AIRLINE



Average Enplaned Load Factor August 2016			
Airline	RNO	Network	Difference
Alaska	79.9%	85.8%	(5.9)
Allegiant Air	78.1%	86.6%	(8.5)
American	83.4%	82.9%	0.5
Delta	82.4%	84.4%	(2.0)
jetBlue	91.8%	87.4%	4.4
Southwest	72.9%	84.6%	(11.7)
United	79.8%	85.5%	(5.7)
Volaris	67.3%	86.6%	(19.3)

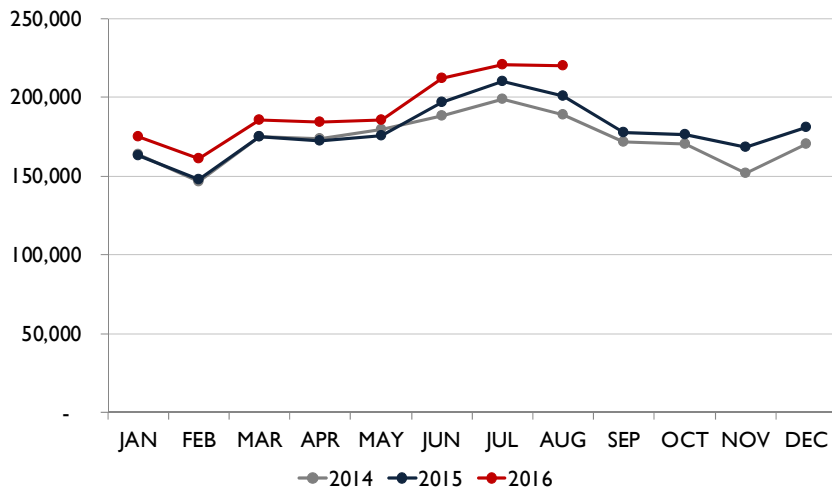


## DEPARTURES



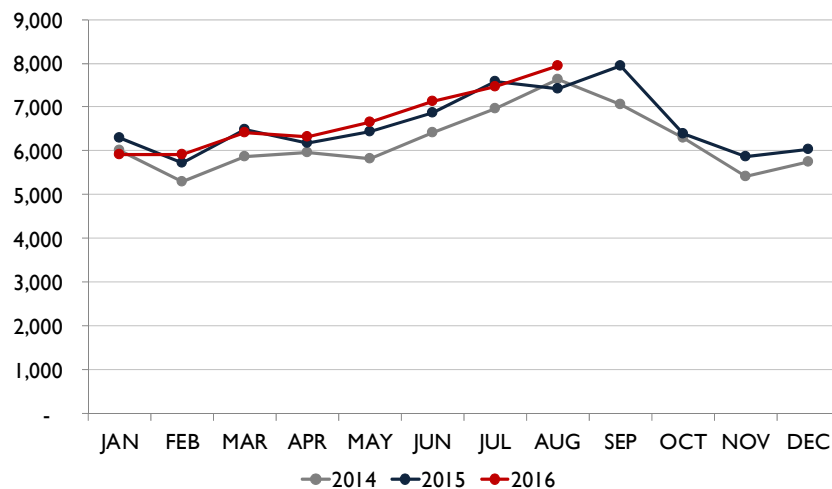
In August 2016, RNO handled 1,835 departures on eight commercial airlines, an increase of 7.6% when compared to August 2015. This doesn't include charter operations on non-incumbent carriers.

## DEPARTING SEATS



In August 2016, eight airlines provided 219,168 departing seats, an increase of 9.6% when compared to August 2015. This doesn't include charter operations on non-incumbent carriers.

## TOTAL OPERATIONS



A total of 7,935 operations were handled at RNO in August 2016, an increase of 7.1% when compared to August 2015. Total operations include: Air Carrier, Air Taxi, General Aviation and Military operations as reported by the FAA.



## Recent and Upcoming Schedule Changes

### Allegiant Air

- The non-stop flight between Reno and Las Vegas operates on Wednesdays, Fridays and Sundays.
- The new non-stop flight between Reno and Los Angeles operates on Thursdays and Sundays.

### American Airlines (seasonal reduction)

- The daily non-stop flight between Reno and Chicago O'Hare will operate until November 4, 2016. The airline temporarily suspends the service from November 5 until December 15, before returning to a daily schedule for the winter holidays on December 16, 2016.

### Delta Air Lines

- On August 28, 2016, Delta Air Lines increased the number of daily non-stop flights between Reno and Salt Lake City from three times a day to four times a day.

### JetBlue Airways

- The non-stop flight between Reno and New York City reduced to a four times a week schedule on September 8, 2016 (Thursday, Friday, Sunday, Monday). The flight returns to a daily schedule during the winter holidays.

### Volaris

- The non-stop flight between Reno and Guadalajara, Mexico operates on Mondays, Wednesdays and Fridays. The airline will increase the frequency on this route to four times a week from December 20, 2016, until January 3, 2017. The additional flight will operate on Tuesdays.





# Reno-Tahoe International Airport

Total Passengers August-16						
	Passengers		% Diff.	Passengers		% Diff.
	2014	2015		2016		
JAN	241,181	246,571	2.2%	259,868	5.4%	
FEB	228,035	234,763	3.0%	269,807	14.9%	
MAR	278,172	277,477	-0.2%	311,974	12.4%	
<b>1st Quarter</b>	<b>747,388</b>	<b>758,811</b>	<b>1.5%</b>	<b>841,649</b>	<b>10.9%</b>	
APR	266,800	256,823	-3.7%	273,707	6.6%	
MAY	282,277	276,969	-1.9%	288,763	4.3%	
JUN	316,720	319,309	0.8%	338,954	6.2%	
<b>2nd Quarter</b>	<b>865,797</b>	<b>853,101</b>	<b>-1.5%</b>	<b>901,424</b>	<b>5.7%</b>	
JUL	332,242	350,823	5.6%	356,768	1.7%	
AUG	318,965	336,948	5.6%	349,934	3.9%	
SEP	284,931	297,299	4.3%			
<b>3rd Quarter</b>	<b>936,138</b>	<b>985,070</b>	<b>5.2%</b>			
OCT	266,701	295,749	10.9%			
NOV	225,384	253,494	12.5%			
DEC	263,682	286,105	8.5%			
<b>4th Quarter</b>	<b>755,767</b>	<b>835,348</b>	<b>10.5%</b>			
<b>TOTAL</b>	<b>3,305,090</b>	<b>3,432,330</b>	<b>3.8%</b>			
<b>YTD Total</b>		2,299,683		2,449,775	6.5%	

Total Enplaned Passengers August-16				
Month	2014	2015	2016	% Diff.
JAN	121,700	124,505	130,546	4.9%
FEB	113,777	117,750	133,669	13.5%
MAR	142,542	141,314	156,542	10.8%
APR	132,183	128,088	136,453	6.5%
MAY	139,349	137,132	144,228	5.2%
JUN	158,827	159,989	168,313	5.2%
JUL	162,090	172,266	177,619	3.1%
AUG	159,664	166,935	171,150	2.5%
SEP	147,458	151,127		
OCT	134,946	150,567		
NOV	112,573	125,712		
DEC	128,295	142,253		
<b>TOTAL</b>	<b>1,653,404</b>	<b>1,717,638</b>		
<b>YTD Total</b>		1,147,979	1,218,520	6.1%

Total Deplaned Passengers				
Month	2014	2015	2016	% Diff.
JAN	119,481	122,066	129,322	5.9%
FEB	114,258	117,013	136,138	16.3%
MAR	135,630	136,163	155,432	14.2%
APR	134,617	128,735	137,254	6.6%
MAY	142,928	139,837	144,535	3.4%
JUN	157,893	159,320	170,641	7.1%
JUL	170,152	178,557	179,149	0.3%
AUG	159,301	170,013	178,784	5.2%
SEP	137,473	146,172		
OCT	131,755	145,182		
NOV	112,811	127,782		
DEC	135,387	143,852		
<b>TOTAL</b>	<b>1,651,686</b>	<b>1,714,692</b>		
<b>YTD Total</b>		1,151,704	1,231,255	6.9%

Enplaned Passengers & Load Factor				
Airline	Enplaned PAX	Aug-16	Aug-15	Diff.
Alaska/Horizon	20,210	79.9%	84.4%	-4.5
Allegiant Air	2,805	78.1%	66.1%	12.0
American	37,373	83.4%	89.4%	-6.0
Delta	10,733	82.4%	85.9%	-3.6
jetBlue	6,471	91.8%	83.5%	8.2
Southwest	70,694	72.9%	81.4%	-8.5
United	20,683	79.8%	80.9%	-1.1
Volaris	1,686	67.3%	63.5%	3.8

Total Cargo August-16						
	2014	2015	% Diff.	2016		% Diff.
	Cargo in Pounds			Pounds	Metric	
JAN	10,303,380	10,113,421	-1.8%	11,939,003	5,415	18.1%
FEB	9,486,697	9,418,781	-0.7%	10,947,416	4,965	16.2%
MAR	9,758,391	10,381,009	6.4%	13,004,808	5,898	25.3%
<b>1st Quarter</b>	<b>29,548,468</b>	<b>29,913,211</b>	<b>1.2%</b>	<b>35,891,227</b>	<b>16,277</b>	<b>20.0%</b>
APR	9,876,465	10,416,248	5.5%	12,341,233	5,597	18.5%
MAY	10,269,963	10,634,389	3.5%	12,088,321	5,482	13.7%
JUN	9,679,744	10,595,645	9.5%	13,432,224	6,092	26.8%
<b>2nd Quarter</b>	<b>29,826,172</b>	<b>31,646,282</b>	<b>6.1%</b>	<b>37,861,778</b>	<b>17,171</b>	<b>19.6%</b>
JUL	10,863,843	11,775,072	8.4%	12,691,135	5,756	7.8%
AUG	10,853,726	11,031,470	1.6%	13,977,442	6,339	26.7%
SEP	10,127,014	12,360,393	22.1%			
<b>3rd Quarter</b>	<b>31,844,583</b>	<b>35,166,935</b>	<b>10.4%</b>			
OCT	11,429,538	12,160,586	6.4%			
NOV	10,664,398	11,657,012	9.3%			
DEC	15,776,084	17,907,699	13.5%			
<b>4th Quarter</b>	<b>37,870,020</b>	<b>41,725,297</b>	<b>10.2%</b>			
<b>TOTAL</b>	<b>129,089,243</b>	<b>138,451,725</b>	<b>7.3%</b>			
<b>YTD Total</b>		84,366,035		100,421,582	45,543	19.0%

Source: RNO Monthly Flight Activity Reports

