



Passenger and Cargo Statistics Report

Reno-Tahoe International Airport
September 2016



**Reno-Tahoe
Airport Authority**

U.S. DOMESTIC INDUSTRY OVERVIEW FOR SEPTEMBER 2016

All RNO Carriers Domestic Systemwide – year over year comparison

Average Load Factor:	84.2% up 0.8 pts.
Number of Flights *:	Up 1.8%
Capacity of Seats *:	Up 4.3%
Crude Oil Average:	\$45.18 per barrel in Sep. 2016 vs. \$45.48 per barrel in Sep. 2015

RNO OVERVIEW FOR SEPTEMBER 2016 – year over year comparison

Total Passengers:	Up 9.6%
Avg. Enplaned Load Factor:	84.4%, flat
Actual Departures:	Up 10.4%
Actual Departing Seats:	Up 11.5%
Total Cargo:	Up 8.0%

Source: RNO Monthly Flight Activity Reports; * INNOVATA Flight Schedule via Diio

SEPTEMBER 2016 SUMMARY

Reno-Tahoe International Airport (RNO) served 325,698 passengers in September 2016, which is up 9.6% versus September 2015. The airport experienced positive passenger growth for the 16th consecutive month with respect to year over year monthly increases. During the first nine months of 2016, RNO served 2,775,473 passengers, representing an increase of 6.9% when compared to the same period last year.

In September 2016, RNO was served by eight airlines providing 1,707 departures to 19 non-stop destinations (23 non-stop destinations if seasonal and new announced flights are included). At RNO, total seat capacity increased 11.5% and flights increased 10.4% when compared to September 2015.

In September 2016, RNO handled 13,347,173 pounds of air cargo, an increase of 8% versus September 2015. During the first nine months of 2016, RNO handled 113,768,755 pounds of air cargo, an increase of 17.6% when compared to the same period last year.

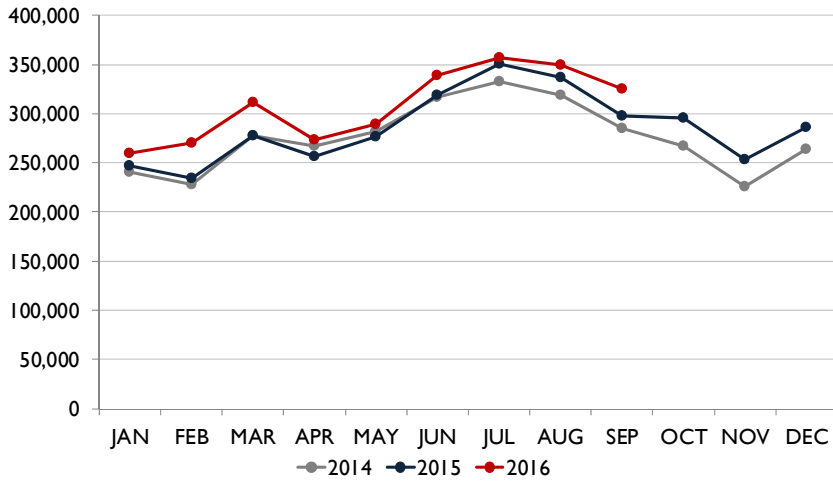
Starting December 19, 2016, Delta Air Lines will begin non-stop seasonal flights between Reno and Atlanta International Airport. The Atlanta-Reno flight will begin as a three times per week service during the holidays, from December 19, 2016, until January 3, 2017. The flight reduces to a once a week schedule, Saturday arrival and Sunday departure, on January 7, 2017. The airline will utilize a 183-seat Boeing 757 on this route.

Starting January 7, 2017, Southwest Airlines will begin a once a week seasonal non-stop flight between RNO and Dallas Love Field Airport (DAL). Starting March 12, 2017, the airline will increase the number of flights between RNO and DAL from one flight a week to two flights a week. The additional flight will operate on Sundays.



Starting February 15, 2017, Allegiant Air will increase the number of flights between RNO and Las Vegas from three times a week to six times a week. The airline will provide this service from Sunday through Friday.

PASSENGERS



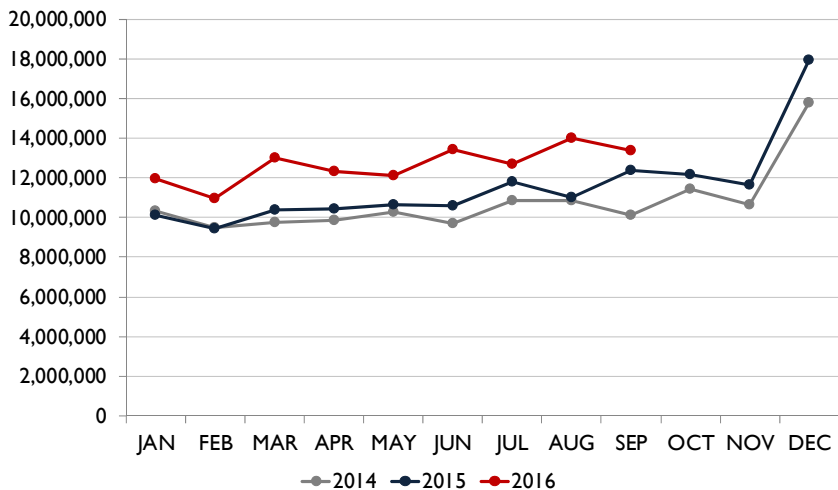
Passengers

Southwest Airlines, the largest carrier at RNO, served 140,805 passengers during the month of September 2016, an increase of 8.9% when compared to September 2015.

In September 2016, JetBlue Airways reported a passenger growth of 143.8% (mainly due to the new RNO-Long Beach flight), Allegiant Air was up 99.1%, Alaska Airlines grew 17.7%, and Delta Air Lines reported an increase of 14.1% when compared to the same period last year. Volaris served 2,962 passengers during the month of September 2016, an increase of 77.6% when compared to September 2015.

American Airlines reported a year-over-year passenger decrease of 5.5%, due to a reduction in RNO-PHX schedule, and United Airlines reported a decrease of 1% when compared to the same period last year.

CARGO



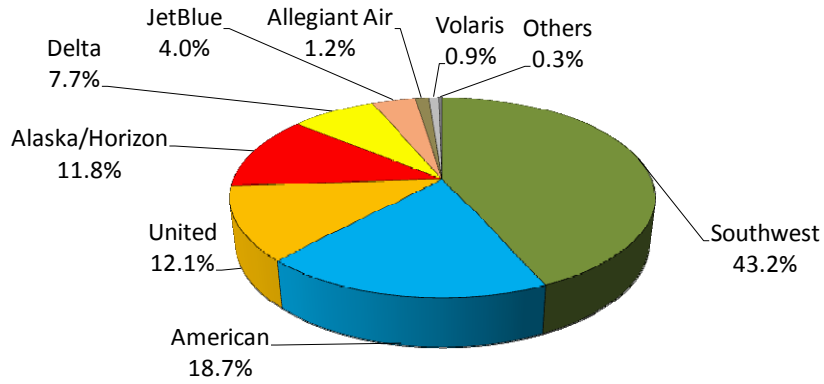
Cargo

RNO handled 13,347,173 pounds of air cargo in September 2016, representing a year-over-year increase of 8%.

The cargo tonnage of DHL increased 83.2%, FedEx grew 9.3% and UPS reported an increase of 1.4% during the same period.

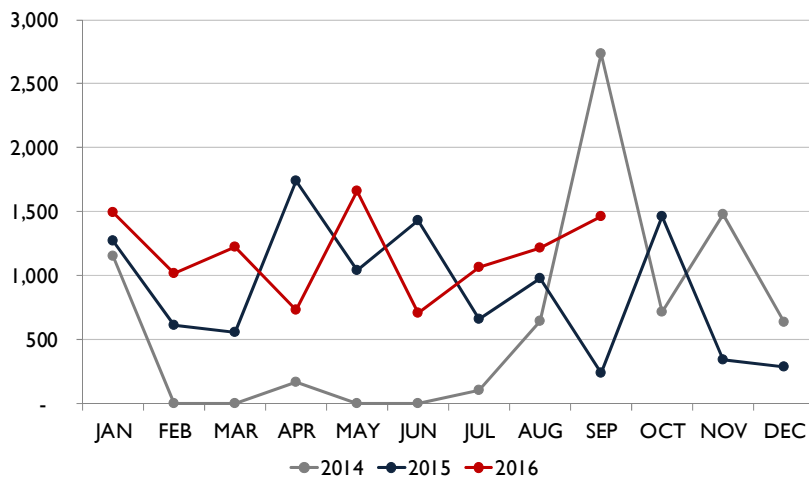


AIR CARRIER MARKET SHARE (passenger airlines)



	September-16	September-15	YOY Change
Alaska/Horizon	11.8%	11.0%	0.8
Allegiant Air	1.2%	0.7%	0.6
American	18.7%	21.7%	(3.0)
Delta	7.7%	7.4%	0.3
JetBlue	4.0%	1.8%	2.2
Southwest	43.2%	43.5%	(0.3)
United	12.1%	13.3%	(1.3)
Volaris	0.9%	0.6%	0.3
Others	0.3%	0.0%	0.3

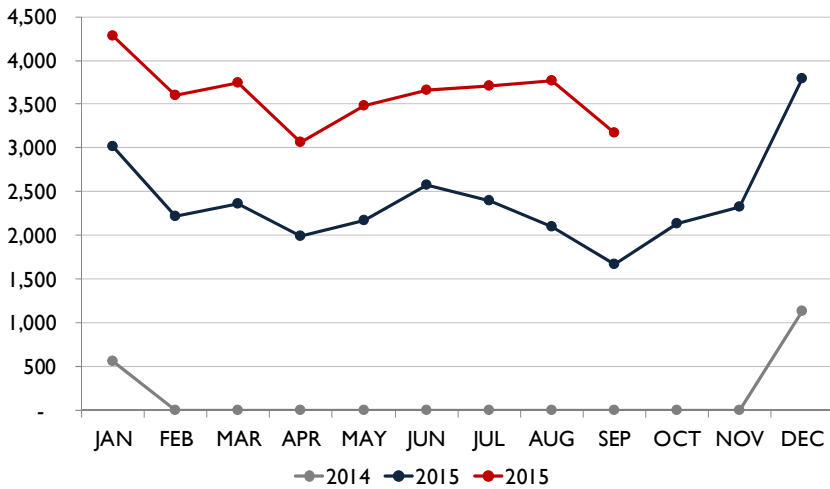
TOTAL CHARTER PASSENGERS



In September 2016, RNO served 1,466 charter passengers through the terminal.

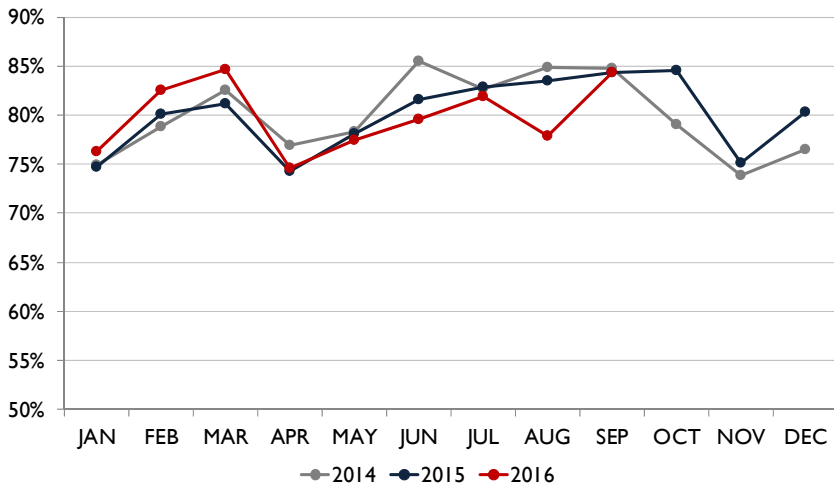


TOTAL INTERNATIONAL PASSENGERS



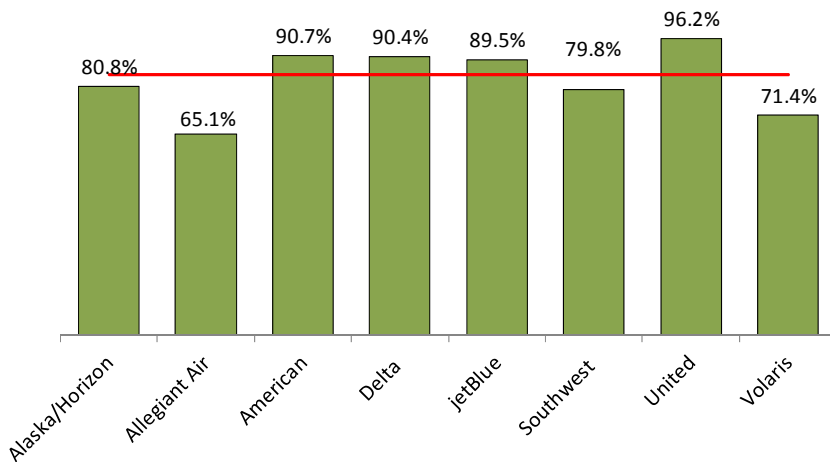
In September 2016, RNO served a total of 3,173 international passengers. Volaris operated three times a week scheduled flights between Reno and Guadalajara, Mexico.

AVERAGE ENPLANED LOAD FACTOR



In September 2016, the average enplaned load factor at RNO was 84.4%, an increase of 0.1 pts. versus September 2015.

AVERAGE ENPLANED LOAD FACTOR BY AIRLINE

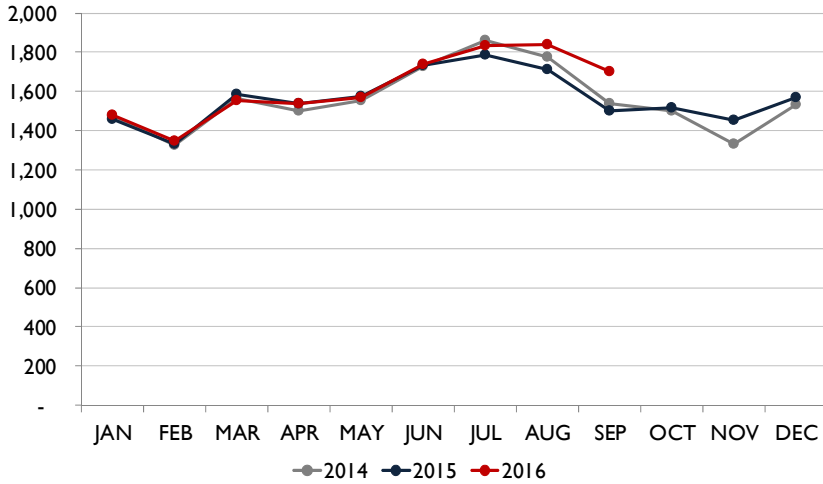


Average Enplaned Load Factor Sep. 2016

Airline	RNO	Network	Difference
Alaska	80.8%	84.1%	(3.3)
Allegiant Air	65.1%	82.8%	(17.7)
American	90.7%	81.6%	9.1
Delta	90.4%	84.6%	5.8
JetBlue	89.5%	83.2%	6.3
Southwest	79.8%	84.2%	(4.4)
United	96.2%	83.2%	13.0
Volaris	71.4%	84.2%	(12.8)

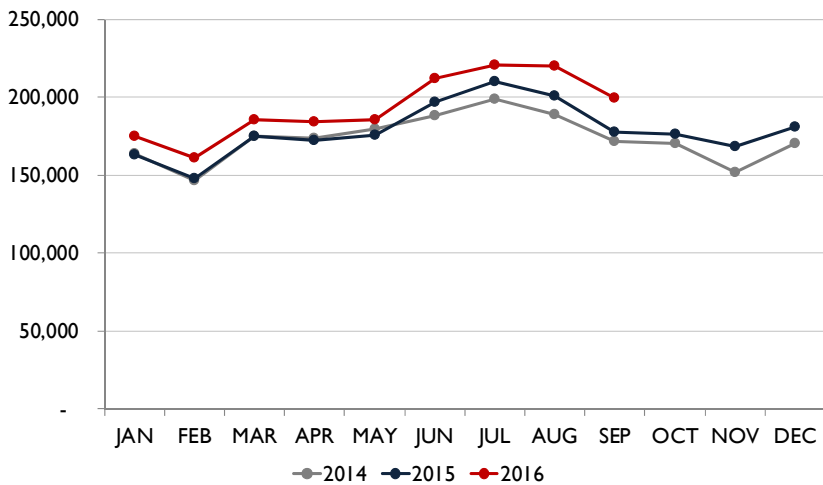


DEPARTURES



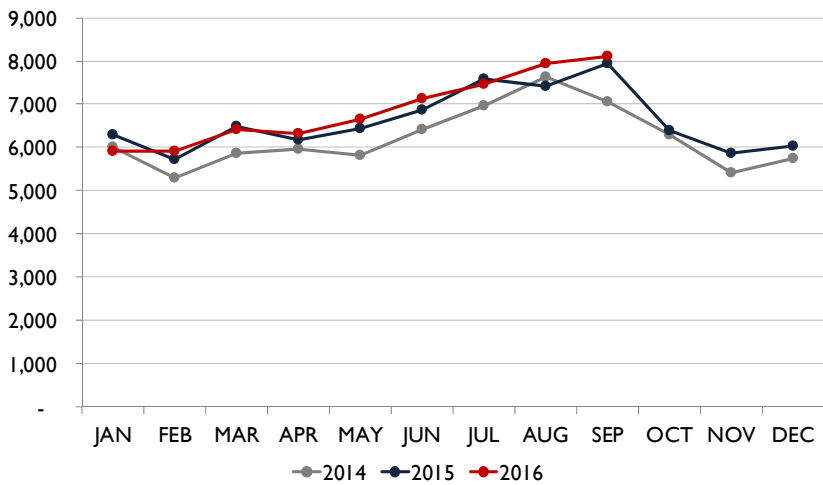
In September 2016, RNO handled 1,707 departures on eight commercial airlines, an increase of 10.4% when compared to September 2015. This doesn't include charter operations on non-incumbent carriers.

DEPARTING SEATS



In September 2016, eight airlines provided 199,941 departing seats, an increase of 11.5% when compared to September 2015. This doesn't include charter operations on non-incumbent carriers.

TOTAL OPERATIONS



A total of 8,116 operations were handled at RNO in September 2016, an increase of 2.1% when compared to September 2015. Total operations include: Air Carrier, Air Taxi, General Aviation and Military operations as reported by the FAA.



Recent and Upcoming Schedule Changes

Allegiant Air

- The non-stop flight between Reno and Las Vegas operates on Wednesdays, Fridays and Sundays.
- The non-stop flight between Reno and Los Angeles operates on Thursdays and Sundays. This flight will operate until December 29, 2016.

American Airlines (seasonal reduction)

- The daily non-stop flight between Reno and Chicago O'Hare will operate until November 4, 2016. The airline temporarily suspends the service from November 5 through December 15, before returning to a daily schedule for the winter holidays on December 16, 2016.

Delta Air Lines (seasonal increase)

- Delta Air Lines will operate daily non-stop flights between Reno and Minneapolis from December 22, 2016, through January 1, 2017.

JetBlue Airways

- The non-stop flight between Reno and New York City reduced to a four times a week schedule on September 8, 2016 (Thursday, Friday, Sunday, Monday). The flight returns to a daily schedule on December 15, 2016.

Southwest Airlines (seasonal reduction)

- The daily non-stop flight between Reno and Chicago Midway will temporarily be suspended on November 6, 2016. The flights returns to daily service on March 9, 2017.

United Airlines (seasonal increase)

- United Airlines will operate daily non-stop flights between Reno and Houston Intercontinental Airport from December 16, 2016, through January 3, 2017. The flight returns as a twice a week service, Saturday and Sunday, on January 7, 2017, and is available through the end of summer.

Volaris

- The non-stop flight between Reno and Guadalajara, Mexico operates on Mondays, Wednesdays and Fridays. The airline will increase the frequency on this route to four times a week from December 20, 2016, until January 3, 2017. The additional flight will operate on Tuesdays.



Reno-Tahoe International Airport

Total Passengers September-16					
	Passengers		% Diff.	Passengers	
	2014	2015		2016	% Diff.
JAN	241,181	246,571	2.2%	259,868	5.4%
FEB	228,035	234,763	3.0%	269,807	14.9%
MAR	278,172	277,477	-0.2%	311,974	12.4%
1st Quarter	747,388	758,811	1.5%	841,649	10.9%
APR	266,800	256,823	-3.7%	273,707	6.6%
MAY	282,277	276,969	-1.9%	288,763	4.3%
JUN	316,720	319,309	0.8%	338,954	6.2%
2nd Quarter	865,797	853,101	-1.5%	901,424	5.7%
JUL	332,242	350,823	5.6%	356,768	1.7%
AUG	318,965	336,948	5.6%	349,934	3.9%
SEP	284,931	297,299	4.3%	325,698	9.6%
3rd Quarter	936,138	985,070	5.2%	1,032,400	4.8%
OCT	266,701	295,749	10.9%		
NOV	225,384	253,494	12.5%		
DEC	263,682	286,105	8.5%		
4th Quarter	755,767	835,348	10.5%		
TOTAL	3,305,090	3,432,330	3.8%		
YTD Total		2,596,982		2,775,473	6.9%

Total Cargo September-16						
	2014	2015	% Diff.	2016		% Diff.
	Cargo in Pounds			Pounds	Metric	
JAN	10,303,380	10,113,421	-1.8%	11,939,003	5,415	18.1%
FEB	9,486,697	9,418,781	-0.7%	10,947,416	4,965	16.2%
MAR	9,758,391	10,381,009	6.4%	13,004,808	5,898	25.3%
1st Quarter	29,548,468	29,913,211	1.2%	35,891,227	16,277	20.0%
APR	9,876,465	10,416,248	5.5%	12,341,233	5,597	18.5%
MAY	10,269,963	10,634,389	3.5%	12,088,321	5,482	13.7%
JUN	9,679,744	10,595,645	9.5%	13,432,224	6,092	26.8%
2nd Quarter	29,826,172	31,646,282	6.1%	37,861,778	17,171	19.6%
JUL	10,863,843	11,775,072	8.4%	12,691,135	5,756	7.8%
AUG	10,853,726	11,031,470	1.6%	13,977,442	6,339	26.7%
SEP	10,127,014	12,360,393	22.1%	13,347,173	6,053	8.0%
3rd Quarter	31,844,583	35,166,935	10.4%	40,015,750	18,148	13.8%
OCT	11,429,538	12,160,586	6.4%			
NOV	10,664,398	11,657,012	9.3%			
DEC	15,776,084	17,907,699	13.5%			
4th Quarter	37,870,020	41,725,297	10.2%			
TOTAL	129,089,243	138,451,725	7.3%			
YTD Total		96,726,428		113,768,755	51,596	17.6%

Total Enplaned Passengers September-16				
Month	2014	2015	2016	% Diff.
JAN	121,700	124,505	130,546	4.9%
FEB	113,777	117,750	133,669	13.5%
MAR	142,542	141,314	156,542	10.8%
APR	132,183	128,088	136,453	6.5%
MAY	139,349	137,132	144,228	5.2%
JUN	158,827	159,989	168,313	5.2%
JUL	162,090	172,266	177,619	3.1%
AUG	159,664	166,935	171,150	2.5%
SEP	147,458	151,127	169,166	11.9%
OCT	134,946	150,567		
NOV	112,573	125,712		
DEC	128,295	142,253		
TOTAL	1,653,404	1,717,638		
YTD Total		1,299,106	1,387,686	6.8%

Total Deplaned Passengers				
Month	2014	2015	2016	% Diff.
JAN	119,481	122,066	129,322	5.9%
FEB	114,258	117,013	136,138	16.3%
MAR	135,630	136,163	155,432	14.2%
APR	134,617	128,735	137,254	6.6%
MAY	142,928	139,837	144,535	3.4%
JUN	157,893	159,320	170,641	7.1%
JUL	170,152	178,557	179,149	0.3%
AUG	159,301	170,013	178,784	5.2%
SEP	137,473	146,172	156,532	7.1%
OCT	131,755	145,182		
NOV	112,811	127,782		
DEC	135,387	143,852		
TOTAL	1,651,686	1,714,692		
YTD Total		1,297,876	1,387,787	6.9%

Enplaned Passengers & Load Factor				
Airline	Enplaned PAX	Sep-16	Sep-15	Diff.
Alaska/Horizon	19,770	80.8%	83.8%	-3.0
Allegiant Air	2,096	65.1%	78.0%	-12.9
American	32,124	90.7%	84.2%	6.5
Delta	13,006	90.4%	92.9%	-2.6
jetBlue	6,848	89.5%	91.0%	-1.5
Southwest	72,741	79.8%	81.6%	-1.8
United	20,481	96.2%	91.4%	4.8
Volaris	1,636	71.4%	61.6%	9.8

Source: RNO Monthly Flight Activity Reports

