



Reno-Tahoe  
Airport  
Authority

# Reno-Tahoe International Airport

## Passengers and Cargo Statistics Report

### April 2023

# U.S. DOMESTIC INDUSTRY & RNO OVERVIEW APRIL 2023

## Systemwide RNO Airlines Domestic Flights – year over year comparison

Number of Flights:	Up 2.5% vs. Apr 2022, down 11.4% vs. Apr 2019
Capacity of Seats:	Up 8.1% vs. Apr 2022, down 0.4% vs. Apr 2019
Crude Oil Average:	\$79.45 per barrel in April 2023 \$101.78 per barrel in April 2022

## RNO Overview for April 2023 vs. April 2022

Total Passengers:	Up 9.5%
Avg. Enplaned Load Factor:	82.5%, up 1.9 pts.
Departures:	Down 1.9%
Departing Seats:	Up 6.5%
Cargo Volume:	Down 24.1%

## RNO Overview for April 2023 vs. April 2019

Total Passengers:	Up 6.2%
Avg. Enplaned Load Factor:	Up 7.5 pts.
Departures:	Down 16.7%
Departing Seats:	Down 2.8%

*Source: Airline Activity and Performance Reports; Cirium Flight Schedules via Diio mi, U.S. Energy Information Administration  
Note: U.S. Domestic capacity includes airlines that serve RNO.*

## APRIL 2023 SUMMARY

Reno-Tahoe International Airport (RNO) served 357,924 passengers in April 2023, an increase of 9.5% versus the same period last year.

In April 2023, RNO was served by 10 airlines to 17 non-stop destinations. The total seat capacity increased 6.5% and flights decreased 1.9% when compared to April 2022.

RNO handled 8,704,717 pounds of air cargo in April 2023, a decrease of 24.1% when compared to April 2022.

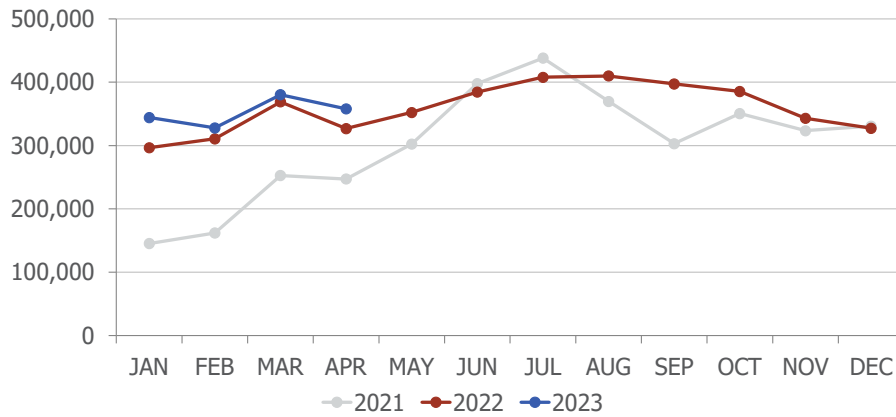
## JSX Public Charters

JSX offers non-stop flights from RNO to Orange County and Burbank using a 30-seat Embraer 135/145 aircraft. JSX operates out of Stellar Aviation, a private Fixed Base Operator, located at 485 South Rock Blvd.

wemoveyou

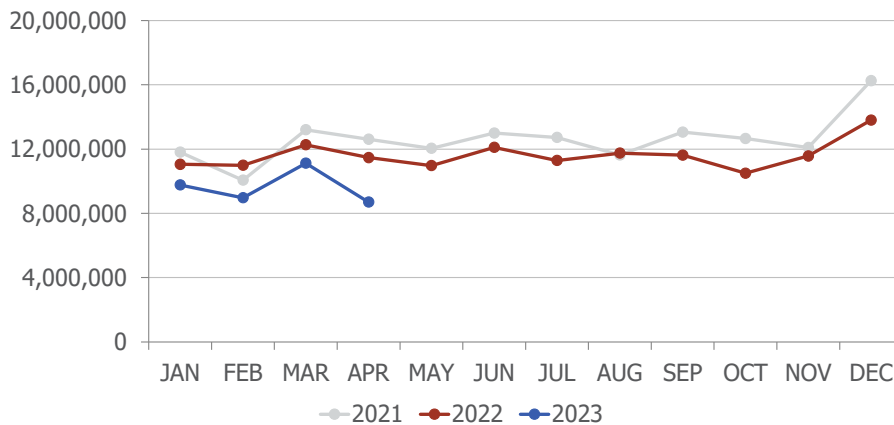


## Passengers



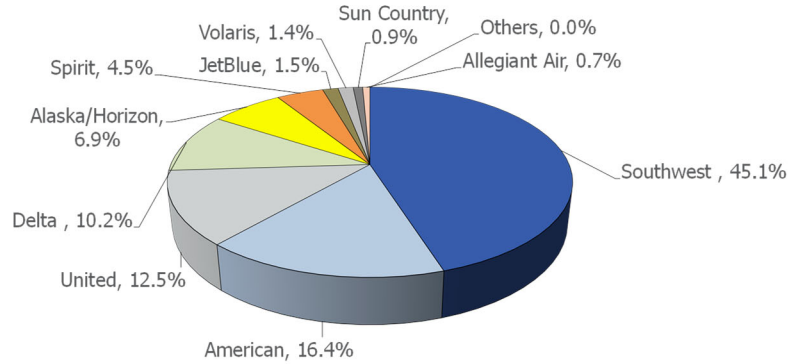
Total Passengers			
	Apr-23	Apr-22	Difference
aha!	0	2,943	
Alaska/Horizon	24,558	29,827	-17.7%
Allegiant Air	2,476	4,795	-48.4%
American	58,793	53,367	10.2%
Delta	36,368	33,586	8.3%
Frontier	0	3,923	
JetBlue	5,287	10,575	-50.0%
Southwest	161,260	138,442	16.5%
Spirit	15,967	0	
Sun Country	3,255	0	
United	44,809	43,373	3.3%
Volaris	5,151	4,017	28.2%

## Cargo



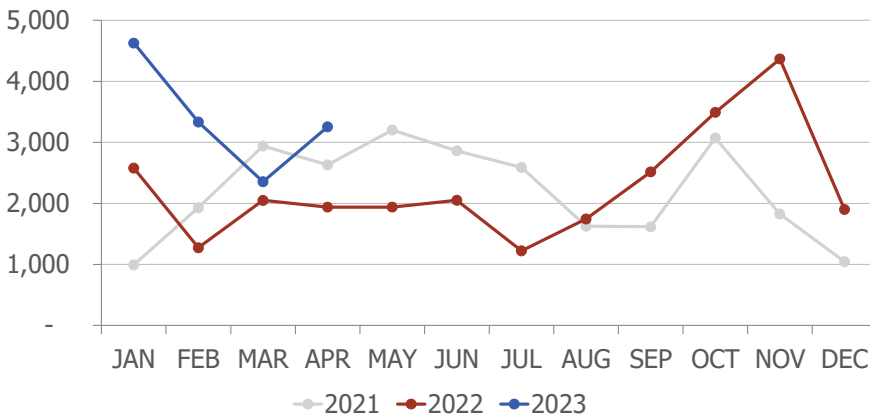
In April 2023, DHL cargo volume was down 18.8%, FedEx was down 24.8% and UPS was down 25.9% when compared to April 2022.

# AIRLINE MARKET SHARE (passengers)



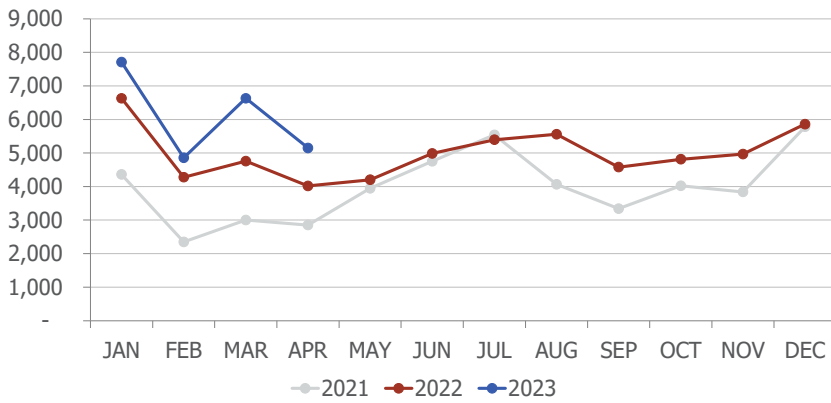
Airline Market Share			
	Apr-23	Apr-22	YOY Change
aha!	n/a	0.9%	n/a
Alaska/Horizon	6.9%	9.1%	(2.3)
Allegiant Air	0.7%	1.5%	(0.8)
American	16.4%	16.3%	0.1
Delta	10.2%	10.3%	(0.1)
Frontier	n/a	1.2%	n/a
JetBlue	1.5%	3.2%	(1.8)
Southwest	45.1%	42.4%	2.7
Spirit	4.5%	n/a	n/a
Sun Country	0.9%	n/a	n/a
United	12.5%	13.3%	(0.8)
Volaris	1.4%	1.2%	0.2
Others	0.0%	0.6%	(0.6)

## TOTAL CHARTER PASSENGERS



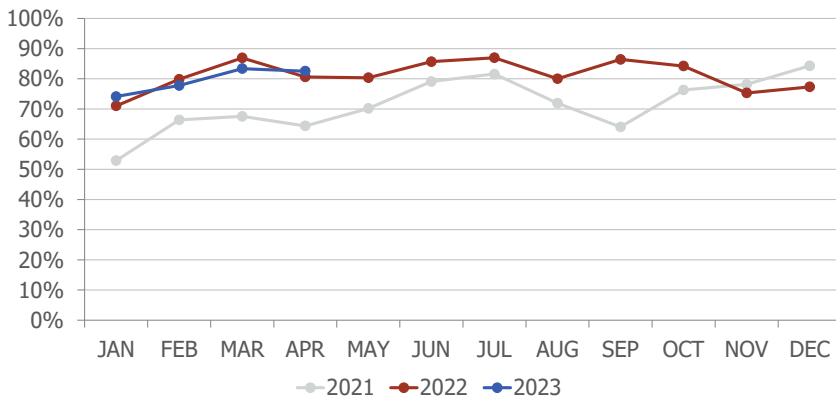
In April 2023, RNO served 3,255 passengers on charter flights, an increase of 67.9% when compared to April 2022.

## TOTAL INTERNATIONAL PASSENGERS

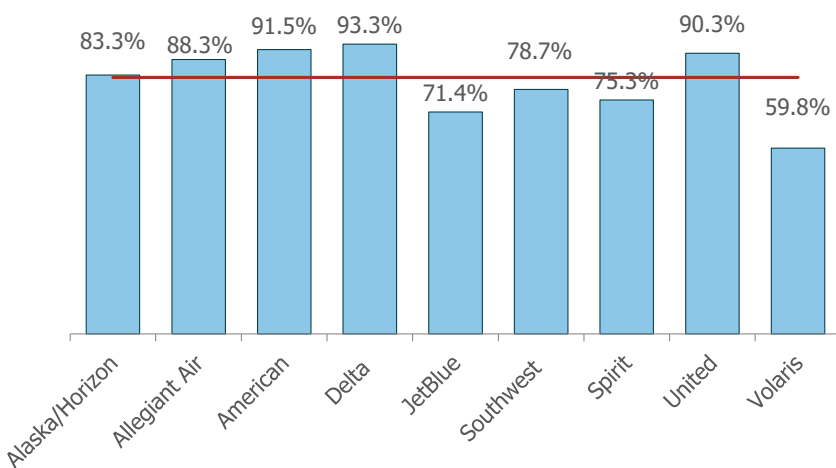


In April 2023, RNO served 5,151 international passengers, an increase of 28.2% when compared to April 2022.

## AVERAGE ENPLANED LOAD FACTOR



In April 2023, RNO's average enplaned load factor was 82.5%, an increase of 1.9 pts. versus April 2022.



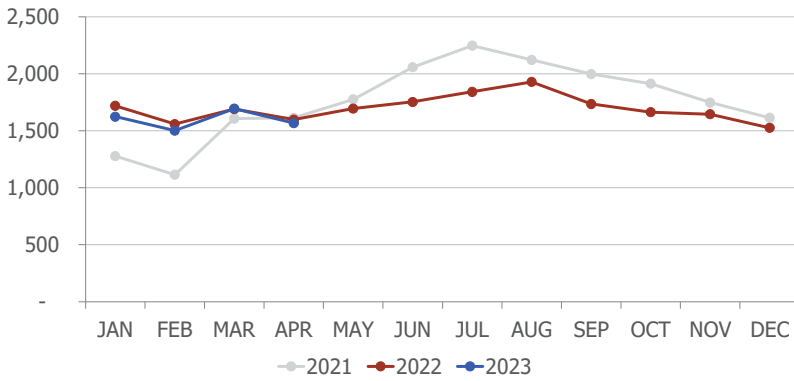
The red horizontal line on the left represents RNO's average enplaned load factor.

wemoveyou



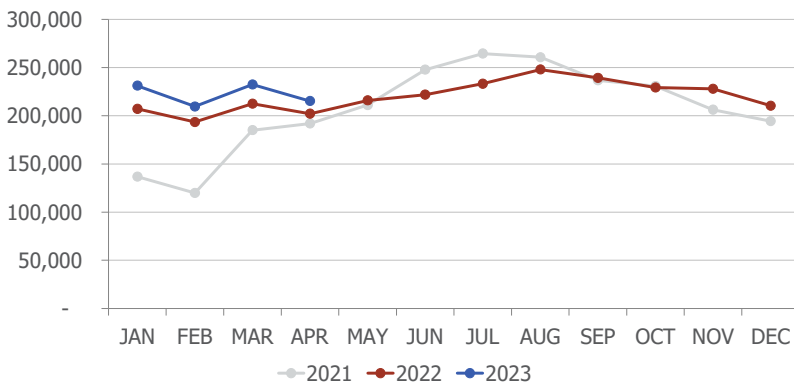
## DEPARTURES

In April 2023, RNO handled 1,567 departures, a decrease of 1.9% when compared to April 2022.



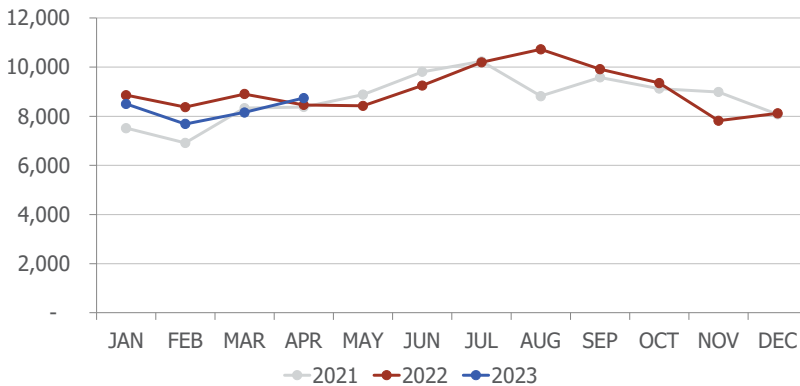
## DEPARTING SEATS

In April 2023, RNO offered 215,318 departing seats, an increase of 6.5% when compared to April 2022.



## TOTAL OPERATIONS

A total of 8,741 operations were handled at RNO in April 2023, an increase of 3.3% when compared to April 2022. Total operations include: Air Carrier, Air Taxi, General Aviation and Military operations as reported by the FAA.



## June 2023 RNO Flight Schedule

Destination	Airlines	Total Departures	Details
<b>Austin</b>	American	13	Daily 16-30. No flight on Sat
<b>Burbank</b>	Southwest	29	Daily, no flight on Jun 3
<b>Chicago-O'Hare</b>	United	29	Daily, no flight on Jun 1
<b>Dallas-Love</b>	Southwest	3	Flights on Jun 10, 17, 24
<b>Dallas/Fort Worth</b>	American	104	Three to four daily
<b>Denver</b>	Southwest	84	Three flights a day. Two on Sat
	United	119	Four flights a day
<b>Guadalajara</b>	Volaris	22	Five weekly flights, Mon - Fri
<b>Houston-Intercontinental</b>	United	8	Twice weekly. Sat and Sun only
<b>Las Vegas</b>	Allegiant	9	Twice weekly. Thu and Sun
	Southwest	295	11 daily Mon-Fri, six to seven on weekends
	Spirit	60	Twice daily
<b>Long Beach</b>	Southwest	56	Twice daily. Once on Sat
<b>Los Angeles</b>	Alaska	10	Four weekly, Mon, Thu, Fri, Sun. Jun 15-30
	Delta	90	Three daily
	JetBlue	30	Daily
	Southwest	52	Twice daily. Once on Sat and Sun
	United	52	Twice daily. Once on Wed and Sun
<b>Minneapolis</b>	Delta	11	Three weekly. Tue, Fri and Sun
	Sun Country	10	Twice weekly. Thu and Sun
<b>New York-JFK</b>	JetBlue	16	Daily. June 15-30
<b>Oakland</b>	Southwest	52	Twice daily. Once on Sat and Sun
<b>Phoenix</b>	American	86	Three daily. Twice on Tue
	Southwest	64	Twice daily. Three on Sun
<b>Portland</b>	Alaska	68	Twice daily Jun 1-14. Two to three Jun 15-30
<b>Salt Lake City</b>	Delta	90	Three daily
<b>San Diego</b>	Southwest	60	Twice daily
<b>San Francisco</b>	United	120	Four daily
<b>San Jose</b>	Southwest	26	Daily. No flights on Sat
<b>Seattle</b>	Alaska	106	Three daily Jun 1-14. Four daily Jun 15-30

Multiple airlines

5.25.2023

wemoveyou



Total Passengers Apr-23						
	Passengers		% Diff.	Passengers		YOY % Diff.
	2021	2022		2023		
JAN	145,421	296,641	104.0%	344,268	16.1%	
FEB	162,071	310,738	91.7%	327,934	5.5%	
MAR	252,828	368,946	45.9%	380,363	3.1%	
<b>1st QTR</b>	<b>560,320</b>	<b>976,325</b>	<b>74.2%</b>	<b>1,052,565</b>	<b>7.8%</b>	
APR	247,220	326,787	32.2%	357,924	9.5%	
MAY	302,403	352,255	16.5%			
JUN	397,906	384,429	-3.4%			
<b>2nd QTR</b>	<b>947,529</b>	<b>1,063,471</b>	<b>12.2%</b>			
JUL	438,168	407,867	-6.9%			
AUG	369,686	409,942	10.9%			
SEP	302,929	397,404	31.2%			
<b>3rd QTR</b>	<b>1,110,783</b>	<b>1,215,213</b>	<b>9.4%</b>	<b>0</b>		
OCT	350,631	385,466	9.9%			
NOV	323,508	343,130	6.1%			
DEC	330,687	327,353	-1.0%			
<b>4th QTR</b>	<b>1,004,826</b>	<b>1,055,949</b>	<b>5.1%</b>	<b>0</b>		
<b>TOTAL</b>	<b>3,623,458</b>	<b>4,310,958</b>	<b>19.0%</b>			
<b>YTD</b>		<b>1,303,112</b>		<b>1,410,489</b>	<b>8.2%</b>	

Total Enplaned Passengers Apr-23				
Month	2021	2022	2023	% Diff.
JAN	72,887	147,773	171,374	16.0%
FEB	80,263	155,233	162,964	5.0%
MAR	126,359	185,671	193,748	4.4%
APR	125,009	163,973	177,665	8.4%
MAY	149,486	174,487		
JUN	197,261	191,234		
JUL	217,124	203,375		
AUG	188,207	199,365		
SEP	152,267	206,819		
OCT	177,407	193,074		
NOV	161,926	171,626		
DEC	164,561	162,680		
<b>TOTAL</b>	<b>1,812,757</b>	<b>2,155,310</b>		
<b>YTD</b>		<b>652,650</b>	<b>705,751</b>	<b>8.1%</b>

Total Deplaned Passengers				
Month	2021	2022	2023	% Diff.
JAN	72,534	148,868	172,894	16.1%
FEB	81,808	155,505	164,970	6.1%
MAR	126,469	183,275	186,615	1.8%
APR	122,211	162,814	180,259	10.7%
MAY	152,917	177,768		
JUN	200,645	193,195		
JUL	221,044	204,492		
AUG	181,479	210,577		
SEP	150,662	190,585		
OCT	173,224	192,392		
NOV	161,582	171,504		
DEC	166,126	164,673		
<b>TOTAL</b>	<b>1,810,701</b>	<b>2,155,648</b>		
<b>YTD</b>		<b>650,462</b>	<b>704,738</b>	<b>8.3%</b>

Total Cargo Volume in Pounds Apr-23						
	Cargo in Pounds		% Diff.	2023		YOY % Diff.
	2021	2022		Pounds	Metric Tons	
JAN	11,805,228	11,052,383	-6.4%	9,768,668	4,430	-11.6%
FEB	10,068,001	10,991,076	9.2%	8,963,956	4,065	-18.4%
MAR	13,204,912	12,265,793	-7.1%	11,124,124	5,045	-9.3%
<b>1st QTR</b>	<b>35,078,141</b>	<b>34,309,252</b>	<b>-2.2%</b>	<b>29,856,748</b>	<b>13,540</b>	<b>-13.0%</b>
APR	12,611,682	11,470,613	-9.0%	8,704,717	3,948	-24.1%
MAY	12,048,247	10,966,757	-9.0%			
JUN	13,000,085	12,105,721	-6.9%			
<b>2nd QTR</b>	<b>37,660,014</b>	<b>34,543,091</b>	<b>-8.3%</b>			
JUL	12,722,035	11,289,066	-11.3%			
AUG	11,636,003	11,751,228	1.0%			
SEP	13,055,518	11,624,360	-11.0%			
<b>3rd QTR</b>	<b>37,413,556</b>	<b>34,664,654</b>	<b>-7.3%</b>			
OCT	12,660,541	10,502,407	-17.0%			
NOV	12,089,489	11,569,577	-4.3%			
DEC	16,260,767	13,806,179	-15.1%			
<b>4th QTR</b>	<b>41,010,797</b>	<b>35,878,163</b>	<b>-12.5%</b>			
<b>TOTAL</b>	<b>151,162,508</b>	<b>139,395,160</b>	<b>-7.8%</b>			
<b>YTD</b>		<b>45,779,865</b>		<b>38,561,465</b>	<b>17,488</b>	<b>-15.8%</b>

Enplaned Passengers & Load Factor				
Airline	Enplaned PAX	Apr-23	Apr-22	Diff.
aha!	0	n/a	45.4%	n/a
Alaska/Horizon	12,460	83.3%	77.5%	5.8
Allegiant Air	1,240	88.3%	80.0%	8.3
American	29,096	91.5%	87.8%	3.7
Delta	18,040	93.3%	91.4%	1.9
Frontier	0	n/a	70.3%	n/a
JetBlue	2,545	71.4%	71.5%	-0.1
Southwest	79,857	78.7%	77.1%	1.6
Spirit	7,948	75.3%	n/a	n/a
Sun Country	1,634	46.2%	n/a	n/a
United	22,704	90.3%	91.3%	-1.0
Volaris	2,141	59.8%	54.7%	5.1

wemoveyou

