



Reno-Tahoe International Airport

Passengers and Cargo Statistics Report

March 2023



U.S. DOMESTIC INDUSTRY & RNO OVERVIEW MARCH 2023

Systemwide RNO Airlines Domestic Flights – year over year comparison

Number of Flights:	Up 4.0% vs. Mar 2022, down 11.4% vs. Mar 2019
Capacity of Seats:	Up 9.4% vs. Mar 2022, down 0.5% vs. Mar 2019
Crude Oil Average:	\$73.28 per barrel in March 2023 \$108.5 per barrel in March 2022

RNO Overview for March 2023 vs. March 2022

Total Passengers:	Up 3.1%
Avg. Enplaned Load Factor:	83.3%, down 3.6 pts.
Departures:	Up 0.2%
Departing Seats:	Up 9.4%
Cargo Volume:	Down 9.3%

RNO Overview for March 2023 vs. March 2019

Total Passengers:	Down 0.7%
Avg. Enplaned Load Factor:	Down 1.7 pts.
Departures:	Down 13.8%
Departing Seats:	Up 1.3%

*Source: Airline Activity and Performance Reports; Cirium Flight Schedules via Diio mi, U.S. Energy Information Administration
Note: U.S. Domestic capacity includes airlines that serve RNO.*

MARCH 2023 SUMMARY

Reno-Tahoe International Airport (RNO) served 380,363 passengers in March 2023, an increase of 3.1% versus the same period last year.

In March 2023, RNO was served by 10 airlines to 20 non-stop destinations. The total seat capacity increased 9.4% and flights increased 0.2% when compared to March 2022.

RNO handled 11,124,124 pounds of air cargo in March 2023, a decrease of 9.3% when compared to March 2022.

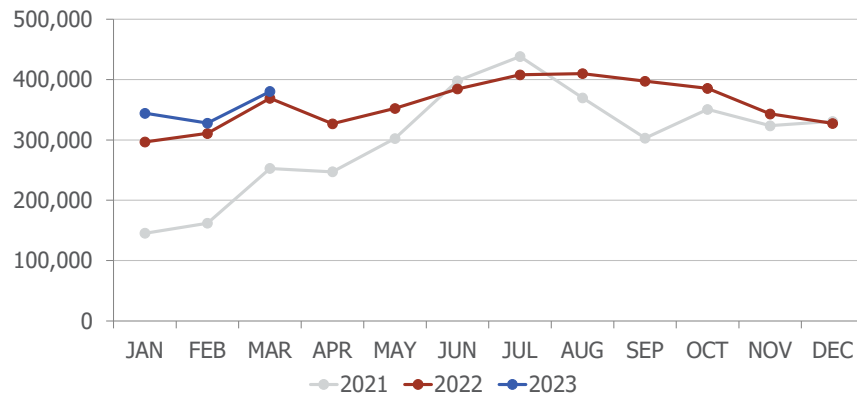
JSX Public Charters

JSX offers non-stop flights from RNO to Orange County and Burbank using a 30-seat Embraer 135/145 aircraft. JSX operates out of Stellar Aviation, a private Fixed Base Operator, located at 485 South Rock Blvd.

wemoveyou

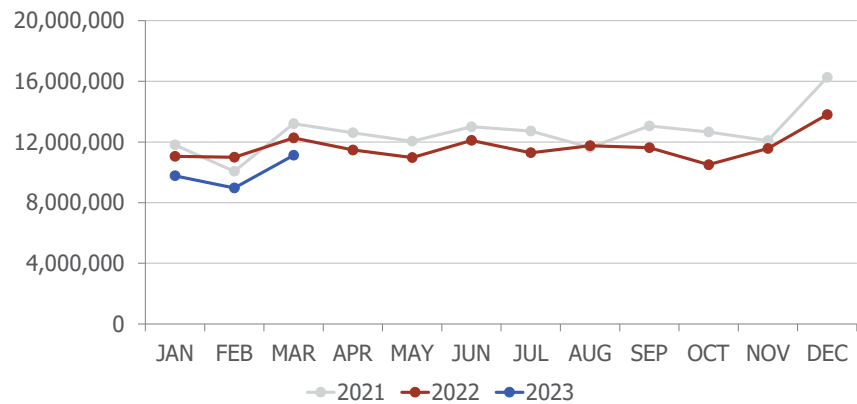


Passengers



Total Passengers			
	Mar-23	Mar-22	Difference
aha!	0	5,501	
Alaska/Horizon	21,695	33,208	-34.7%
Allegiant Air	2,378	5,012	-52.6%
American	55,961	57,191	-2.2%
Delta	36,706	37,802	-2.9%
Frontier	0	4,859	
JetBlue	12,222	13,119	-6.8%
Southwest	164,888	148,582	11.0%
Spirit	17,760	0	
Sun Country	2,354	0	
United	59,769	56,892	5.1%
Volaris	6,630	4,757	39.4%

Cargo

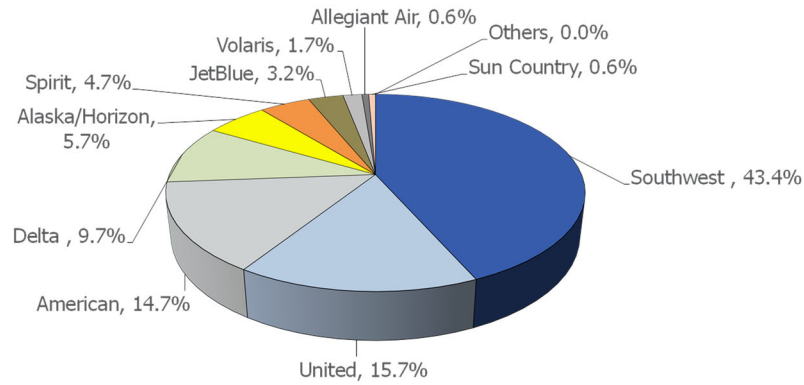


In March 2023, DHL cargo volume was up 35.1% when compared to March 2022. FedEx was down 4.0% and UPS was down 21.7% during the same period.

wemoveyou

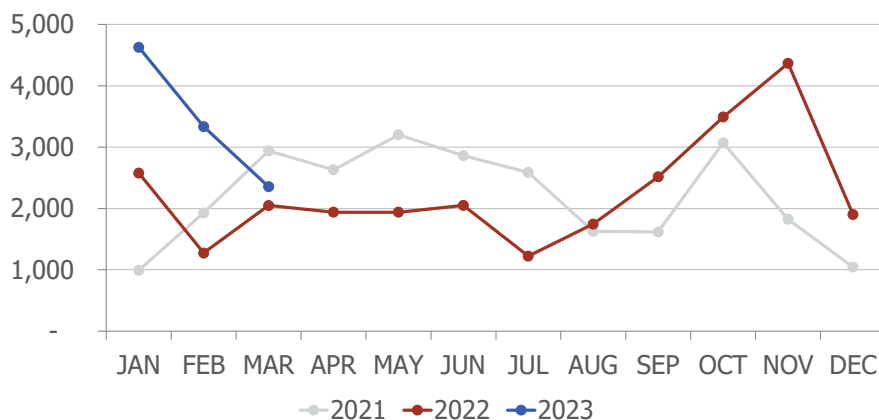


AIRLINE MARKET SHARE (passengers)



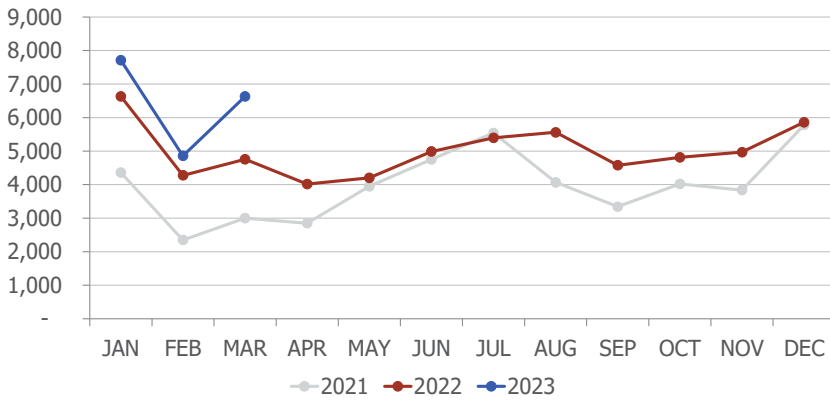
Airline Market Share			
	Mar-23	Mar-22	YOY Change
aha!	n/a	1.5%	n/a
Alaska/Horizon	5.7%	9.0%	(3.3)
Allegiant Air	0.6%	1.4%	(0.7)
American	14.7%	15.5%	(0.8)
Delta	9.7%	10.2%	(0.6)
Frontier	n/a	1.3%	n/a
JetBlue	3.2%	3.6%	(0.3)
Southwest	43.4%	40.3%	3.1
Spirit	4.7%	n/a	n/a
Sun Country	0.6%	n/a	n/a
United	15.7%	15.4%	0.3
Volaris	1.7%	1.3%	0.5
Others	0.0%	0.5%	(0.5)

TOTAL CHARTER PASSENGERS



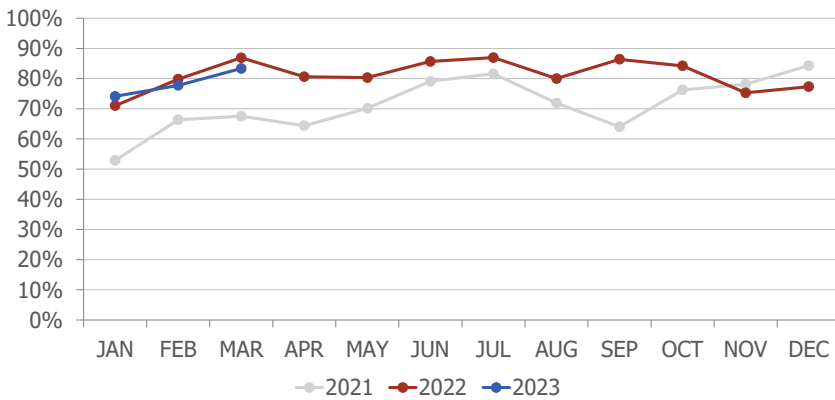
In March 2023, RNO served 2,354 passengers on charter flights, an increase of 14.8% when compared to March 2022.

TOTAL INTERNATIONAL PASSENGERS

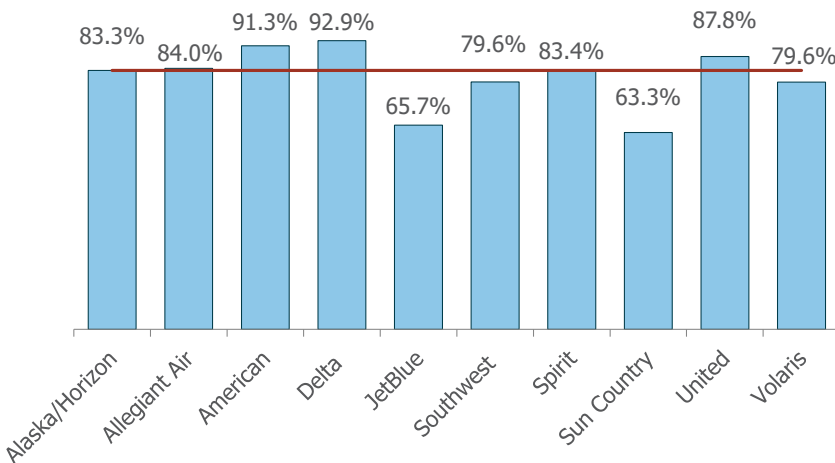


In March 2023, RNO served 6,630 international passengers, an increase of 39.4% when compared to March 2022.

AVERAGE ENPLANED LOAD FACTOR



In March 2023, RNO's average enplaned load factor was 83.3%, a decrease of 3.6 pts. versus March 2022.

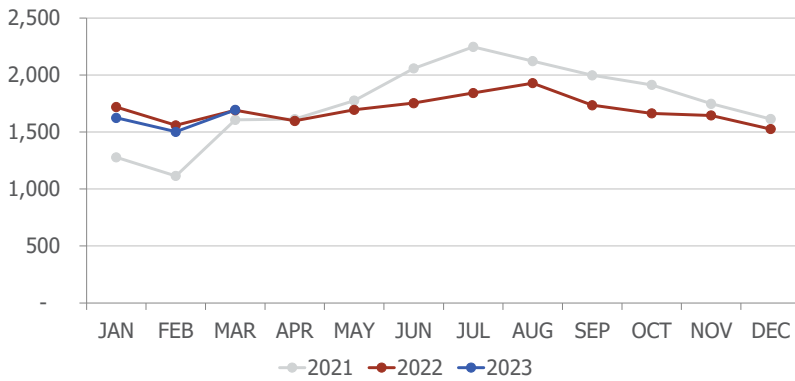


The red horizontal line on the left represents RNO's average enplaned load factor.

wemoveyou

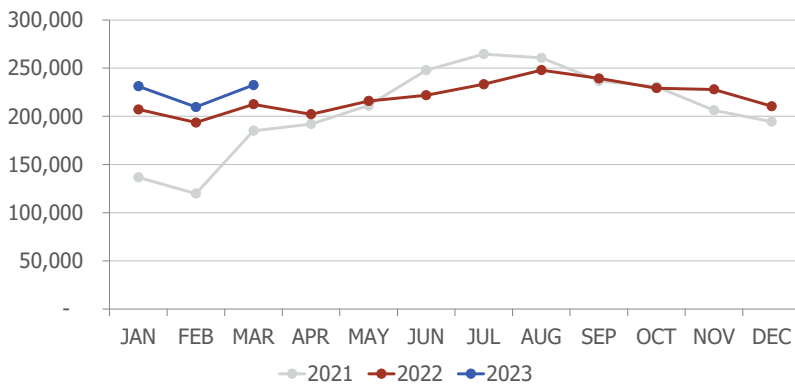


DEPARTURES



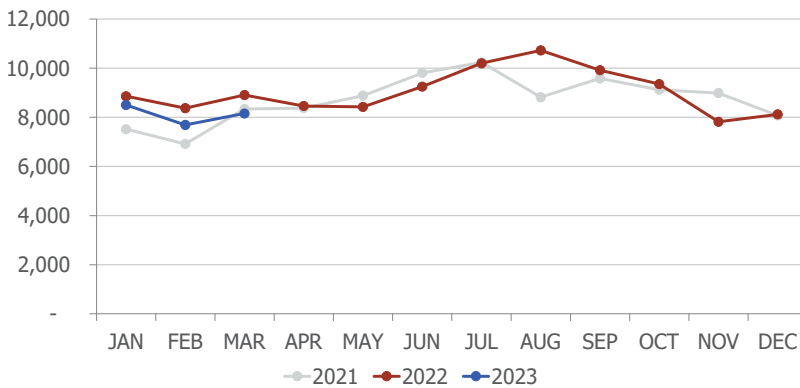
In March 2023, RNO handled 1,694 departures, an increase of 0.2% when compared to March 2022.

DEPARTING SEATS



In March 2023, RNO offered 232,508 departing seats, an increase of 9.4% when compared to March 2022.

TOTAL OPERATIONS



A total of 8,154 operations were handled at RNO in March 2023, a decrease of 8.4% when compared to March 2022. Total operations include: Air Carrier, Air Taxi, General Aviation and Military operations as reported by the FAA.

May 2023 RNO Flight Schedule

Destination	Airlines	Total Departures	Details
Austin	American	31	Daily
Burbank	Southwest	23	Daily Mon - Fri
Dallas/Fort Worth	American	90	Three daily
Denver	Southwest	67	Twice daily. Three daily 1-5
	United	93	Three daily
Guadalajara	Volaris	23	Daily Mon-Fri
Las Vegas	Allegiant	8	Twice weekly. Thu, Sun
	Southwest	309	11 daily Mon-Fri. Seven on Sat, Sun
	Spirit	62	Twice daily
Long Beach	Southwest	54	Twice daily. Once on Sat, Sun
Los Angeles	Delta	93	Three daily
	JetBlue	29	Daily. No flight on 2 and 3.
	Southwest	54	Twice daily. Once on Sat, Sun
	United	31	Daily
Oakland	Southwest	54	Twice daily. Once on Sat, Sun
Phoenix	American	118	Three to four daily
	Southwest	62	Twice daily
Portland	Alaska	45	Daily 1-17. Twice daily 18-31
Salt Lake City	Delta	93	Three daily
San Diego	Southwest	62	Twice daily
San Francisco	United	124	Four daily
San Jose	Southwest	27	Six weekly. No flights on Sat
Seattle	Alaska	93	Three daily

Multiple airlines

5.2.2023

wemoveyou



Total Passengers Mar-23						
	Passengers		% Diff.	Passengers		YOY % Diff.
	2021	2022		2023		
JAN	145,421	296,641	104.0%	344,268	16.1%	
FEB	162,071	310,738	91.7%	327,934	5.5%	
MAR	252,828	368,946	45.9%	380,363	3.1%	
1st QTR	560,320	976,325	74.2%	1,052,565	7.8%	
APR	247,220	326,787	32.2%			
MAY	302,403	352,255	16.5%			
JUN	397,906	384,429	-3.4%			
2nd QTR	947,529	1,063,471	12.2%	0		
JUL	438,168	407,867	-6.9%			
AUG	369,686	409,942	10.9%			
SEP	302,929	397,404	31.2%			
3rd QTR	1,110,783	1,215,213	9.4%	0		
OCT	350,631	385,466	9.9%			
NOV	323,508	343,130	6.1%			
DEC	330,687	327,353	-1.0%			
4th QTR	1,004,826	1,055,949	5.1%	0		
TOTAL	3,623,458	4,310,958	19.0%			
YTD		976,325		1,052,565	7.8%	

Total Enplaned Passengers Mar-23				
Month	2021	2022	2023	% Diff.
JAN	72,887	147,773	171,374	16.0%
FEB	80,263	155,233	162,964	5.0%
MAR	126,359	185,671	193,748	4.4%
APR	125,009	163,973		
MAY	149,486	174,487		
JUN	197,261	191,234		
JUL	217,124	203,375		
AUG	188,207	199,365		
SEP	152,267	206,819		
OCT	177,407	193,074		
NOV	161,926	171,626		
DEC	164,561	162,680		
TOTAL	1,812,757	2,155,310		
YTD		488,677	528,086	8.1%

Total Deplaned Passengers				
Month	2021	2022	2023	% Diff.
JAN	72,534	148,868	172,894	16.1%
FEB	81,808	155,505	164,970	6.1%
MAR	126,469	183,275	186,615	1.8%
APR	122,211	162,814		
MAY	152,917	177,768		
JUN	200,645	193,195		
JUL	221,044	204,492		
AUG	181,479	210,577		
SEP	150,662	190,585		
OCT	173,224	192,392		
NOV	161,582	171,504		
DEC	166,126	164,673		
TOTAL	1,810,701	2,155,648		
YTD		487,648	524,479	7.6%

Total Cargo Volume in Pounds Mar-23						
	2021	2022	% Diff.	2023		YOY % Diff.
	Cargo in Pounds			Pounds	Metric Tons	
JAN	11,805,228	11,052,383	-6.4%	9,768,668	4,430	-11.6%
FEB	10,068,001	10,991,076	9.2%	8,963,956	4,065	-18.4%
MAR	13,204,912	12,265,793	-7.1%	11,124,124	5,045	-9.3%
1st QTR	35,078,141	34,309,252	-2.2%	29,856,748	13,540	-13.0%
APR	12,611,682	11,470,613	-9.0%			
MAY	12,048,247	10,966,757	-9.0%			
JUN	13,000,085	12,105,721	-6.9%			
2nd QTR	37,660,014	34,543,091	-8.3%			
JUL	12,722,035	11,289,066	-11.3%			
AUG	11,636,003	11,751,228	1.0%			
SEP	13,055,518	11,624,360	-11.0%			
3rd QTR	37,413,556	34,664,654	-7.3%			
OCT	12,660,541	10,502,407	-17.0%			
NOV	12,089,489	11,569,577	-4.3%			
DEC	16,260,767	13,806,179	-15.1%			
4th QTR	41,010,797	35,878,163	-12.5%			
TOTAL	151,162,508	139,395,160	-7.8%			
YTD		34,309,252		29,856,748	13,540	-13.0%

Enplaned Passengers & Load Factor				
Airline	Enplaned PAX	Mar-23	Mar-22	Diff.
aha!	0	n/a	45.8%	n/a
Alaska/Horizon	10,777	83.3%	86.0%	-2.7
Allegiant Air	1,204	84.0%	81.5%	2.4
American	28,902	91.3%	96.0%	-4.7
Delta	18,722	92.9%	93.2%	-0.3
Frontier	0	n/a	80.3%	n/a
JetBlue	6,011	65.7%	79.5%	-13.8
Southwest	83,826	79.6%	84.7%	-5.1
Spirit	9,256	83.4%	n/a	n/a
Sun Country	1,178	63.3%	n/a	n/a
United	30,595	87.8%	92.5%	-4.7
Volaris	3,277	79.6%	82.0%	-2.4

wemoveyou

