



# Passenger and Cargo Statistics Report

**Reno-Tahoe International Airport**  
December 2018



**Reno-Tahoe  
Airport Authority**

## U.S. DOMESTIC INDUSTRY OVERVIEW FOR DECEMBER 2018

### Systemwide RNO Carriers Domestic Flights – year over year comparison

Average Load Factor:	82.5%, Down 0.7 pt.
Number of Flights *:	Up 4.1%
Capacity of Seats *:	Up 5.0%
Crude Oil Average:	\$49.52 per barrel in Dec. 2018 vs. \$57.88 per barrel in Dec. 2017

### RNO Overview for December 2018 – year over year comparison

Total Passengers:	Up 4.4%
Avg. Enplaned Load Factor:	75.8%, Down 1.6 pts.
Actual Departures:	Up 10.1%
Actual Departing Seats:	Up 5.5%

Source: Airline Activity and Performance Reports;

\* FlightGlobal Flight Schedules via Diio

## DECEMBER 2018 SUMMARY

Reno-Tahoe International Airport (RNO) served 341,283 passengers in December 2018, an increase of 4.4% versus the same period last year. The airport experienced positive passenger growth for the 43rd consecutive month with respect to the year over year monthly increases. During the year 2018, RNO served 4,210,095 passengers, an increase of 4.8% when compared to the same period last year.

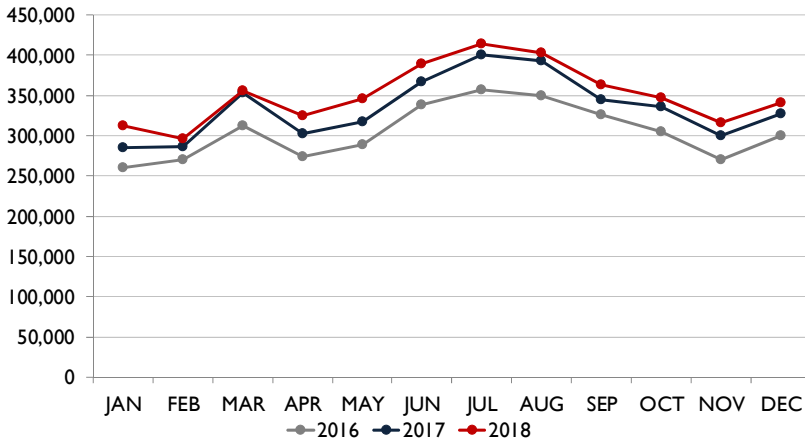
In December 2018, RNO was served by 10 airlines providing 1,902 departures to 21 non-stop destinations. At RNO, total seat capacity increased 5.5% and flights increased 10.1% when compared to December 2017.

RNO, handled 14,128,422 pounds of air cargo in December 2018, an decrease of 5.1% when compared to December 2017. During the year 2018, RNO handled 148,862,677 pounds of air cargo, a decrease of 2.2% when compared to the same period last year.

On December 2, 2018, California Pacific Airlines began non-stop flights between Reno and Carlsbad, California. During the last week of December 2018, the airline announced that all flights from Carlsbad would temporarily be suspended due to a pilot shortage.



## PASSENGERS

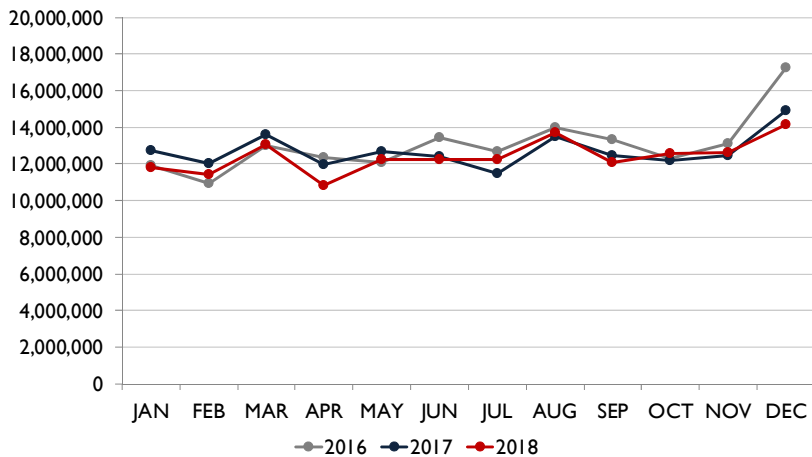


## Passengers

Southwest Airlines, the largest carrier at RNO, served 145,523 passengers during the month of December 2018, an increase of 4.1% when compared to December 2017.

In December 2018, United Airlines reported a passenger increase of 21.4%, Allegiant Air was up 10.5%, Volaris was up 9.2%, Delta Air Lines was up 9.1%, and JetBlue reported an increase of 3.9% when compared to December 2017. Frontier Airlines' passenger traffic was down 38.5%, American Airlines was down 3.2% and Alaska Airlines reported a decrease of 0.6% during the same period. California Pacific Airlines served 145 passengers during the month of December 2018.

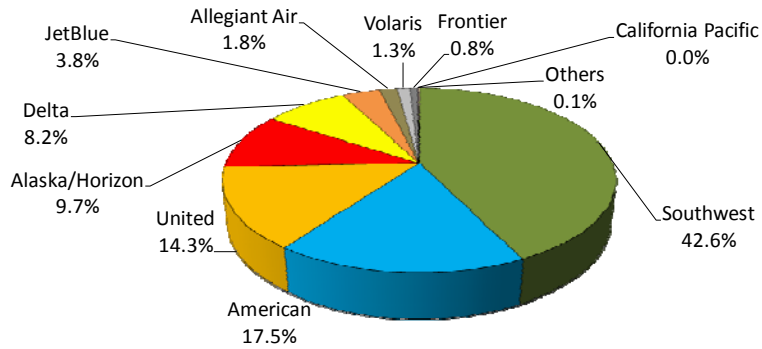
## CARGO



## Cargo

In December 2018, UPS cargo tonnage was up 3.5% when compared to December 2017. FedEx was down 10.5% and DHL was down 9.9% during the same period.

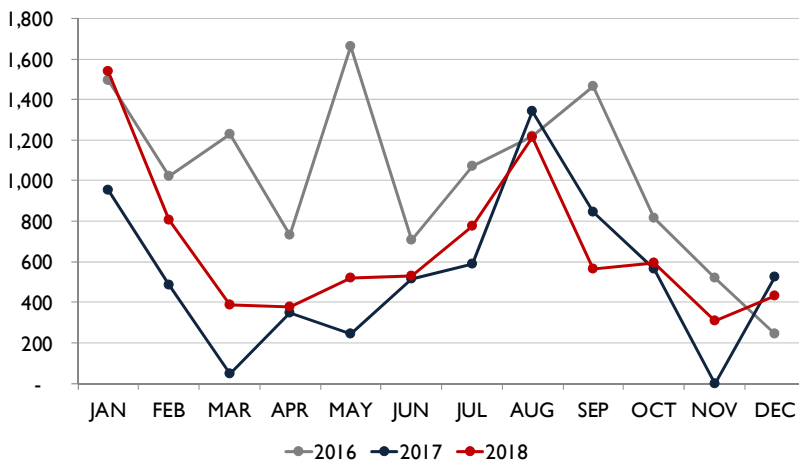
## AIR CARRIER MARKET SHARE (passenger airlines)



	December-18	December-17	YOY Change
Alaska/Horizon	9.7%	10.2%	(0.5)
Allegiant Air	1.8%	1.7%	0.1
American	17.5%	18.8%	(1.4)
California Pacific	0.0%	n/a	n/a
Delta	8.2%	7.9%	0.4
Frontier	0.8%	1.3%	(0.5)
JetBlue	3.8%	3.8%	(0.0)
Southwest	42.6%	42.7%	(0.1)
United	14.3%	12.3%	2.0
Volaris	1.3%	1.2%	0.1
Others	0.1%	0.2%	(0.1)

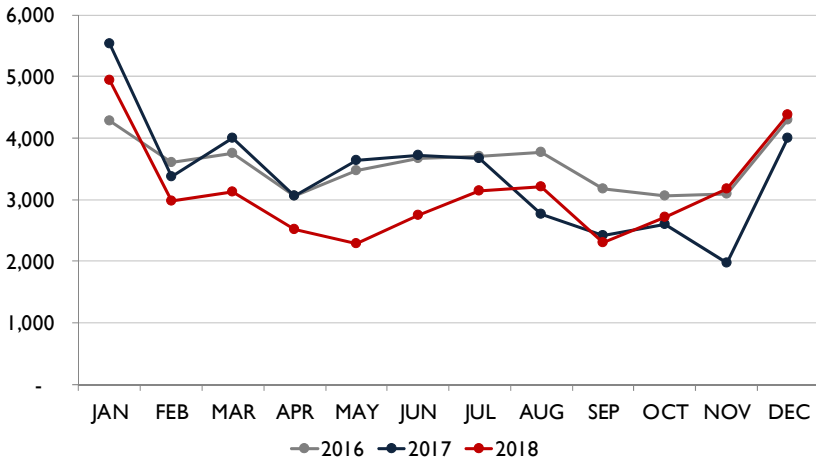
Note: numbers are rounded up to one decimal figure.

## TOTAL CHARTER PASSENGERS



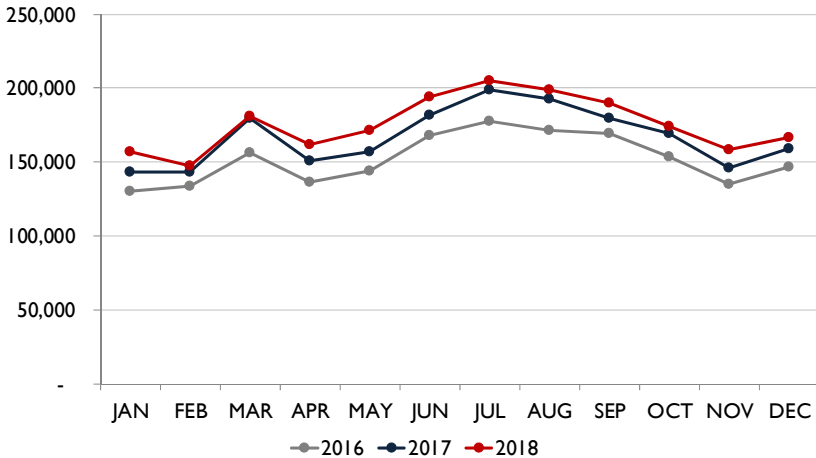
RNO served 429 passengers on charter flights during the month of December 2018.

## TOTAL INTERNATIONAL PASSENGERS



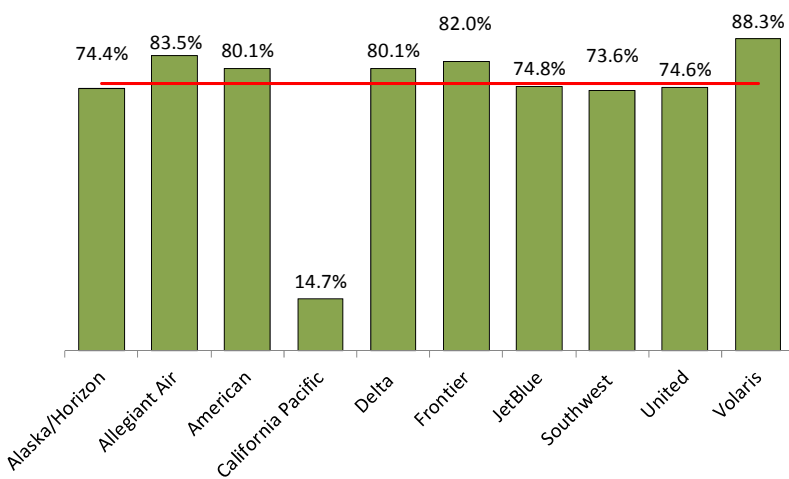
In December 2018, RNO served a total of 4,371 international passengers, an increase of 9.2% when compared to December 2017.

## AVERAGE ENPLANED LOAD FACTOR



In December 2018, the average enplaned load factor at RNO was 75.8%, a decrease of 1.6 pts. versus December 2017.

## AVERAGE ENPLANED LOAD FACTOR BY AIRLINE



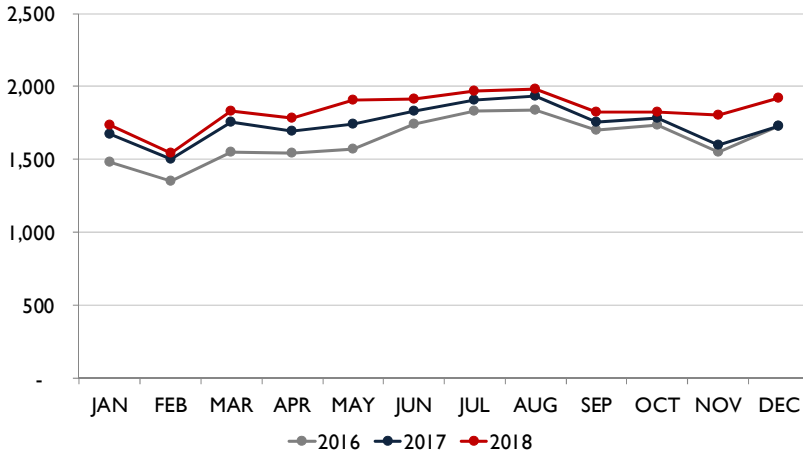
Airline	RNO	Network	Difference
Alaska/Horizon	74.4%	82.2%	(7.8)
Allegiant Air	83.5%	81.8%	1.7
American	80.1%	83.2%	(3.1)
California Pacific	14.7%		
Delta	80.1%	84.2%	(4.1)
Frontier	82.0%		
JetBlue	74.8%	81.4%	(6.6)
Southwest	73.6%	81.6%	(8.0)
United	74.6%	83.2%	(8.6)
Volaris	88.3%	80.9%	7.4

Source: Airline Performance Reports  
 American Airlines: 3rd quarter 2018 data  
 Volaris International Load Factor

Note: numbers are rounded up to one decimal figure.



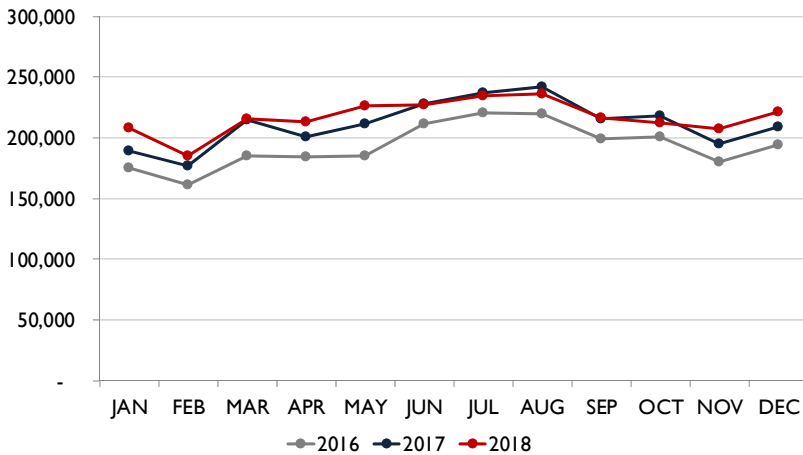
## DEPARTURES



In December 2018, RNO handled 1,902 departures on 10 commercial airlines, an increase of 10.1% when compared to December 2017.

This doesn't include charter operations on non-incumbent carriers.

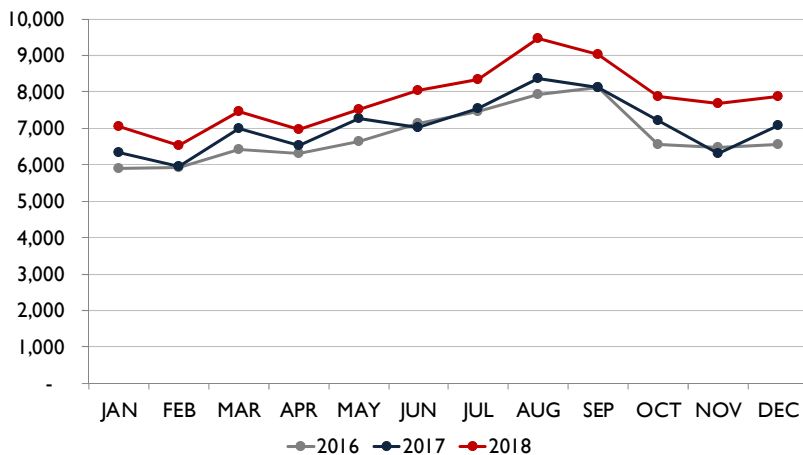
## DEPARTING SEATS



In December 2018, ten airlines provided 219,896 departing seats, an increase of 5.5% when compared to December 2017.

This doesn't include charter operations on non-incumbent carriers.

## TOTAL OPERATIONS



A total of 7,860 operations were handled at RNO in December 2018, an increase of 11.1% when compared to December 2017. Total operations include: Air Carrier, Air Taxi, General Aviation and Military operations as reported by the FAA.

Note: graphs on this page show scheduled departures, seats and operations



## Recent and Upcoming Schedule Changes

- Alaska Airlines
  - Alaska Airlines offers non-stop flights between Reno and Boise six days a week Sunday through Friday.
- Allegiant Air
  - Allegiant Air offers non-stop flights between Reno and Las Vegas five days a week (Mondays, Wednesdays, Thursdays, Fridays and Sundays). The daily service resumes on February 13, 2019.
- American Airlines
  - Starting November 4, 2018, American Airlines increased the number of daily flights between Reno and Los Angeles from four times a day to five times a day. The airline will return to the four times a day schedule on April 2, 2019.
  - American Airlines temporarily suspended the non-stop seasonal flights between Reno and Chicago O'Hare on October 4, 2018. This flight will return on May 3, 2019.
- Delta Air Lines
  - Delta Air Lines' non-stop seasonal flight between Reno and Atlanta operated daily from December 23, 2018, until January 2, 2019. From January 6, 2019, through March 31, 2019, this flight will operate on Sundays only.
  - Delta Air Lines' non-stop seasonal flight between Reno and Minneapolis operated as a daily service from December 22, 2018, until January 2, 2019. This flight will return during the summer season.
- Frontier Airlines
  - Starting November 14, 2018, Frontier Airlines reduced the number of non-stop flights between Reno and Denver from four times a week to twice a week (Wednesdays and Saturdays). From January 10, 2019, until February 28, 2019, the airline will offer this flight on Thursdays and Sundays. Starting March 2, 2019, the airline will offer this flight on Wednesdays and Saturdays.
- JetBlue Airways
  - JetBlue Airways offers non-stop flights between Reno and New York City four times a week (Mondays, Thursdays, Fridays and Sundays).
- Southwest Airlines
  - Southwest Airlines' non-stop seasonal flight between Reno and Dallas Love Field will operate on the following schedule:
    - Sundays only from January 13, 2019, until March 3, 2019
    - Saturday/Sunday only from March 9, 2019, until April 7, 2019
  - Southwest Airlines temporarily suspended the non-stop daily flights between Reno and Chicago Midway on October 3, 2018. This flight will return on March 7, 2019.



- Southwest Airlines operates twice a day flights between Reno and Oakland. The airline will offer this flight three times a day on select days of the week from March 7, 2019, until April 7, 2019.
- Southwest Airlines offers non-stop flights between Reno and San Jose twice a day Monday through Friday and once a day service on Saturdays and Sundays. Starting April 8, 2019, Southwest will increase the weekday flights to three times a day.
- Southwest Airlines offers non-stop flights between Reno and San Diego twice a day. From January 6, 2019, until March 6, 2019, the airline will offer this flight three times a day, before returning to the twice a day schedule.
- United Airlines
  - United Airlines' non-stop seasonal flight between Reno and Chicago O' Hare was temporarily suspended on September 3, 2018. The airline will operate this flight on Saturdays and Sundays from February 16, 2019, until March 3, 2019. Starting March 8, 2019, until March 31, 2019, United will offer this service daily, before returning to the Saturday/Sunday schedule on April 6, 2019.
  - United Airlines' non-stop seasonal flight between Reno and Houston was recently upgraded from a seasonal to a year-round service. Typically, the airline offers this route on Saturdays and Sundays only. However, United will operate this flight daily from February 14, 2019, until March 31, 2019.
- Volaris
  - Volaris offers non-stop flights between Reno and Guadalajara, Mexico, three days a week (Mondays, Wednesdays and Fridays).





Total Passengers December-18					
	Passengers		% Diff.	Passengers	
	2016	2017		2018	% Diff.
JAN	259,868	284,553	9.5%	312,125	9.7%
FEB	269,807	286,322	6.1%	296,726	3.6%
MAR	311,974	353,651	13.4%	356,112	0.7%
<b>1st Quarter</b>	<b>841,649</b>	<b>924,526</b>	<b>9.8%</b>	<b>964,963</b>	<b>4.4%</b>
APR	273,707	302,078	10.4%	325,428	7.7%
MAY	288,763	317,935	10.1%	345,740	8.7%
JUN	338,954	367,600	8.5%	389,103	5.8%
<b>2nd Quarter</b>	<b>901,424</b>	<b>987,613</b>	<b>9.6%</b>	<b>1,060,271</b>	<b>7.4%</b>
JUL	356,768	400,754	12.3%	414,529	3.4%
AUG	349,934	393,478	12.4%	402,794	2.4%
SEP	325,698	345,280	6.0%	362,831	5.1%
<b>3rd Quarter</b>	<b>1,032,400</b>	<b>1,139,512</b>	<b>10.4%</b>	<b>1,180,154</b>	<b>3.6%</b>
OCT	304,447	336,433	10.5%	347,591	3.3%
NOV	270,367	300,308	11.1%	315,833	5.2%
DEC	300,543	326,989	8.8%	341,283	4.4%
<b>4th Quarter</b>	<b>875,357</b>	<b>963,730</b>	<b>10.1%</b>	<b>1,004,707</b>	<b>4.3%</b>
<b>TOTAL</b>	<b>3,650,830</b>	<b>4,015,381</b>	<b>10.0%</b>		
<b>YTD Total</b>		4,015,381		4,210,095	4.8%

Total Enplaned Passengers December-18				
Month	2016	2017	2018	% Diff.
JAN	130,546	143,070	156,747	9.6%
FEB	133,669	143,000	147,568	3.2%
MAR	156,542	179,473	181,141	0.9%
APR	136,453	150,827	161,913	7.4%
MAY	144,228	156,943	171,430	9.2%
JUN	168,313	182,045	193,777	6.4%
JUL	177,619	199,224	205,174	3.0%
AUG	171,150	192,726	198,874	3.2%
SEP	169,166	179,829	189,886	5.6%
OCT	153,936	169,259	174,084	2.9%
NOV	135,217	149,714	158,100	5.6%
DEC	146,741	161,640	166,795	3.2%
<b>TOTAL</b>	<b>1,823,580</b>	<b>2,007,750</b>		
<b>YTD Total</b>		2,007,750	2,105,489	4.9%

Total Deplaned Passengers				
Month	2016	2017	2018	% Diff.
JAN	129,322	141,483	155,378	9.8%
FEB	136,138	143,322	149,158	4.1%
MAR	155,432	174,178	174,971	0.5%
APR	137,254	151,251	163,515	8.1%
MAY	144,535	160,992	174,310	8.3%
JUN	170,641	185,555	195,326	5.3%
JUL	179,149	201,530	209,355	3.9%
AUG	178,784	200,752	203,920	1.6%
SEP	156,532	165,451	172,945	4.5%
OCT	150,511	167,174	173,507	3.8%
NOV	135,150	150,594	157,733	4.7%
DEC	153,802	165,349	174,488	5.5%
<b>TOTAL</b>	<b>1,829,266</b>	<b>2,009,648</b>		
<b>YTD Total</b>		2,007,631	2,106,624	4.9%

Total Cargo December-18						
	2016	2017	% Diff.	2018		% Diff.
	Cargo in Pounds			Pounds	Metric	
JAN	11,939,003	12,749,916	6.8%	11,795,775	5,350	-7.5%
FEB	10,947,416	12,023,060	9.8%	11,417,480	5,178	-5.0%
MAR	13,004,808	13,595,007	4.5%	13,053,097	5,920	-4.0%
<b>1st Quarter</b>	<b>35,891,227</b>	<b>38,367,983</b>	<b>6.9%</b>	<b>36,266,352</b>	<b>16,447</b>	<b>-5.5%</b>
APR	12,341,233	11,974,440	-3.0%	10,826,085	4,910	-9.6%
MAY	12,088,321	12,671,643	4.8%	12,245,815	5,554	-3.4%
JUN	13,432,224	12,396,234	-7.7%	12,225,509	5,544	-1.4%
<b>2nd Quarter</b>	<b>37,861,778</b>	<b>37,042,317</b>	<b>-2.2%</b>	<b>35,297,409</b>	<b>16,008</b>	<b>-4.7%</b>
JUL	12,691,135	11,454,156	-9.7%	12,233,364	5,548	6.8%
AUG	13,977,442	13,472,975	-3.6%	13,689,777	6,209	1.6%
SEP	13,347,173	12,436,806	-6.8%	12,052,727	5,466	-3.1%
<b>3rd Quarter</b>	<b>40,015,750</b>	<b>37,363,937</b>	<b>-6.6%</b>	<b>37,975,868</b>	<b>17,223</b>	<b>1.6%</b>
OCT	12,305,525	12,169,329	-1.1%	12,548,739	5,691	3.1%
NOV	13,089,468	12,446,633	-4.9%	12,645,887	5,735	1.6%
DEC	17,247,162	14,882,745	-13.7%	14,128,422	6,407	-5.1%
<b>4th Quarter</b>	<b>42,642,155</b>	<b>39,498,707</b>	<b>-7.4%</b>	<b>39,323,048</b>	<b>17,834</b>	<b>-0.4%</b>
<b>TOTAL</b>	<b>156,410,910</b>	<b>152,272,944</b>	<b>-2.6%</b>			
<b>YTD Total</b>		152,272,944		148,862,677	67,511	-2.2%

Enplaned Passengers & Load Factor				
Airline	Enplaned PAX	Load Factor	Dec-17	Diff.
Alaska/Horizon	16,178	74.4%	80.5%	-6.1
Allegiant Air	3,128	83.5%	79.2%	4.3
American	29,144	80.1%	86.6%	-6.5
California Pacific	66	14.7%	n/a	n/a
Delta	14,007	80.1%	82.5%	-2.4
Frontier	1,328	82.0%	86.5%	-4.5
JetBlue	6,173	74.8%	75.0%	-0.2
Southwest	71,079	73.6%	71.9%	1.7
United	22,995	74.6%	77.9%	-3.3
Volaris	2,530	88.3%	89.9%	-1.6

Source: RNO Monthly Flight Activity Reports

