



Reno-Tahoe International Airport

Passengers and Cargo Statistics Report

December 2019



U.S. DOMESTIC INDUSTRY OVERVIEW FOR DECEMBER 2019

Systemwide RNO Airlines Domestic Flights – year over year comparison

Number of Flights *:	Up 4.5%
Capacity of Seats *:	Up 4.9%
Crude Oil Average:	\$59.88 per barrel in December 2019 vs. \$49.52 per barrel in December 2018

RNO Overview for December 2019 – year over year comparison

Total Passengers:	Up 11.9%
Avg. Enplaned Load Factor:	80.1%, up 4.3 pts.
Actual Departures:	Up 4.2%
Actual Departing Seats:	Up 6.6%

*Source: Airline Activity and Performance Reports; * Cirium Flight Schedules via Diio mi*

DECEMBER 2019 SUMMARY

Reno-Tahoe International Airport (RNO) served 381,897 passengers in December 2019, an increase of 11.9% versus the same period last year. The airport experienced positive passenger growth for the 55th consecutive month with respect to the year over year monthly increases.

During 2019, RNO served 4,450,673 passengers, an increase of 5.7% when compared to 2018. This represents the fifth consecutive year of annual passengers growth and the highest passenger numbers since 2007. This increase is mainly attributed to the seat additions from United Airlines, American Airlines, Southwest Airlines and Alaska Airlines.

In December 2019, RNO was served by nine airlines providing 1,981 departures to 20 non-stop destinations. At RNO, total seat capacity increased 6.6% and flights increased 4.2% when compared to December 2018.

RNO handled 15,270,324 pounds of air cargo in December 2019, an increase of 8.1% when compared to December 2018. In 2019, RNO handled 146,899,694 pounds of air cargo, a decrease of 1.3% when compared to 2018.

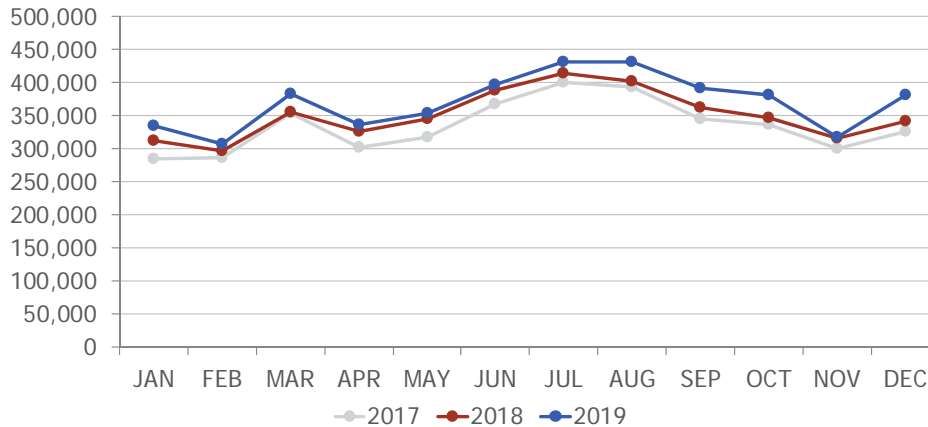
Starting February 14, 2020, Delta Air Lines will upgrade the non-stop flights between Reno and Atlanta, from seasonal to a year-round service. Daily flights begin on June 4, 2020.

Starting May 13, 2020, Allegiant Air will increase non-stop flights between Reno and Las Vegas from once a day to twice a day.

wemoveyou



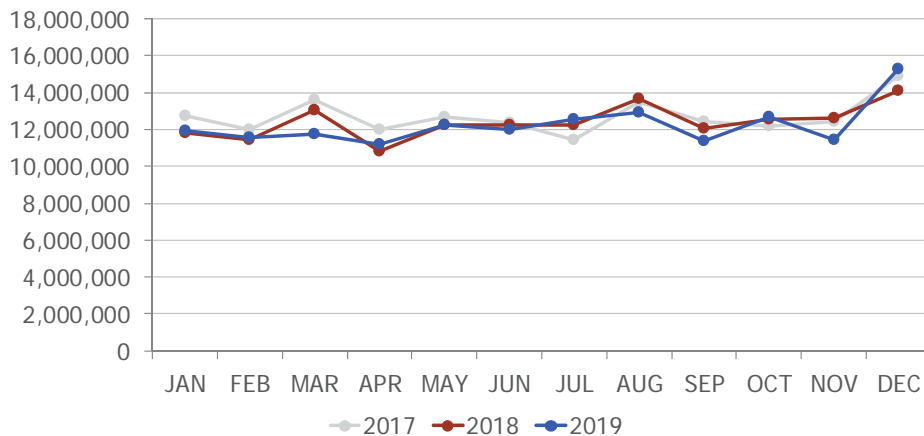
Passengers



Southwest Airlines, the largest carrier at RNO, served 148,908 passengers during the month of December 2019, an increase of 2.3% when compared to December 2018.

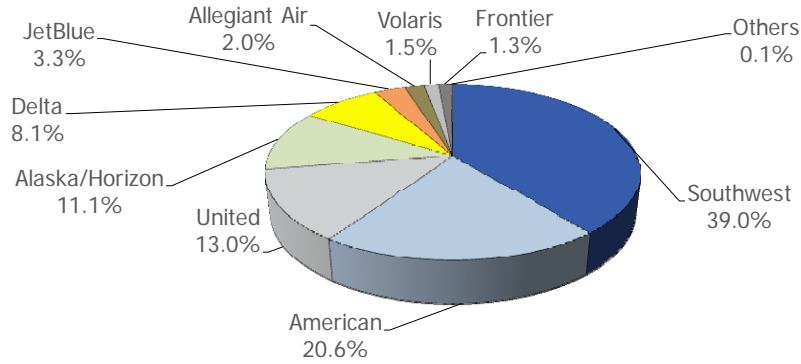
In December 2019, Frontier reported a passenger increase of 91.4%, American Airlines was up 32.1%, Volaris was up 29.2%, Alaska Airlines was up 28.0%, Allegiant Air was up 27.6%, Delta Air Lines was up 10.3% and United Airlines reported an increase of 2.0% when compared to December 2018. JetBlue Airways reported a decrease of 2.1% during the same period.

Cargo



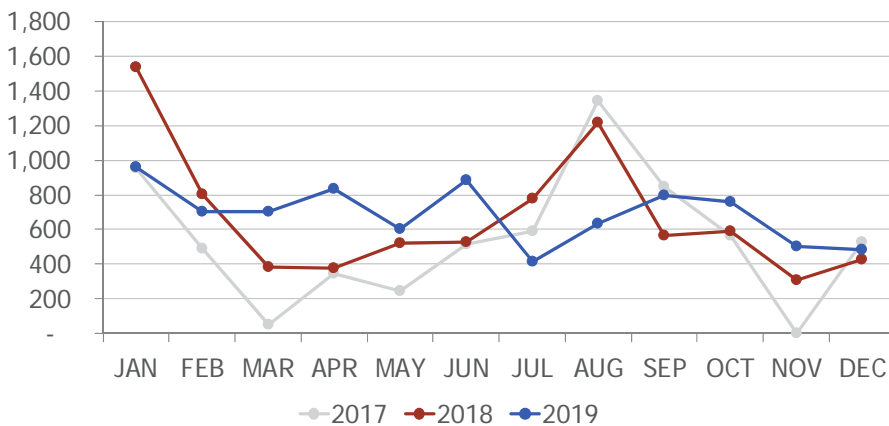
In December 2019, UPS cargo tonnage was up 10.2%, FedEx was up 7.4% and DHL reported an increase of 2.3% when compared to December 2018.

AIRLINE MARKET SHARE (passengers)



Airline Market Share			
	December-19	December-18	YOY Change
Alaska/Horizon	11.1%	9.7%	1.4
Allegiant Air	2.0%	1.8%	0.2
American	20.6%	17.5%	3.1
Delta	8.1%	8.2%	(0.1)
Frontier	1.3%	0.8%	0.5
JetBlue	3.3%	3.8%	(0.5)
Southwest	39.0%	42.6%	(3.6)
United	13.0%	14.3%	(1.3)
Volaris	1.5%	1.3%	0.2
Others	0.1%	0.1%	0.0

TOTAL CHARTER PASSENGERS

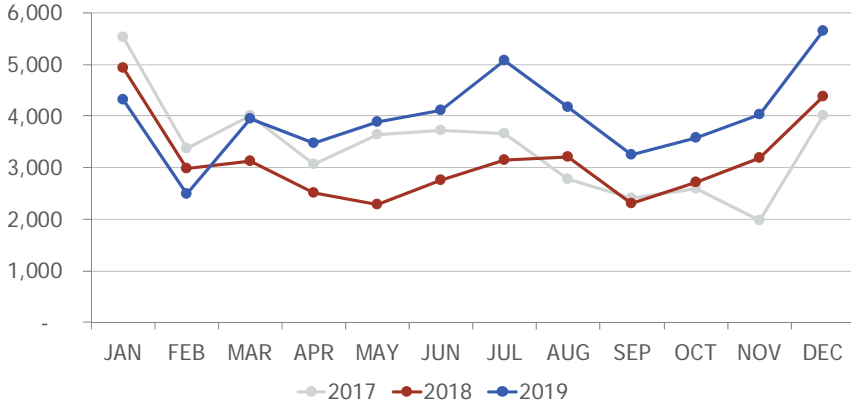


RNO served 482 passengers on charter flights during the month of December 2019.

wemoveyou

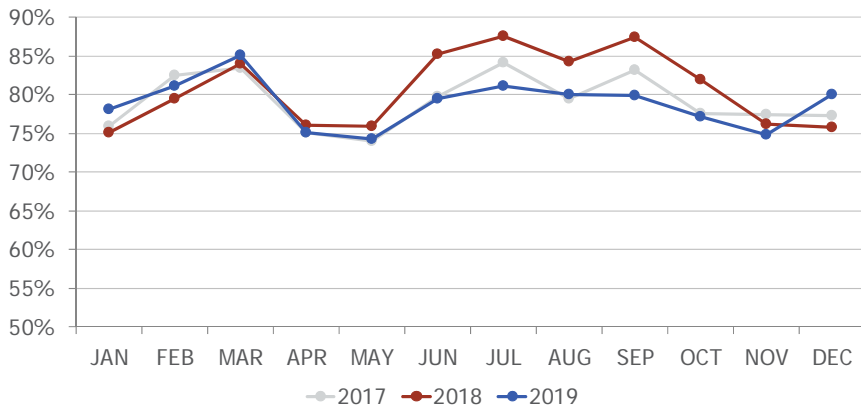


TOTAL INTERNATIONAL PASSENGERS

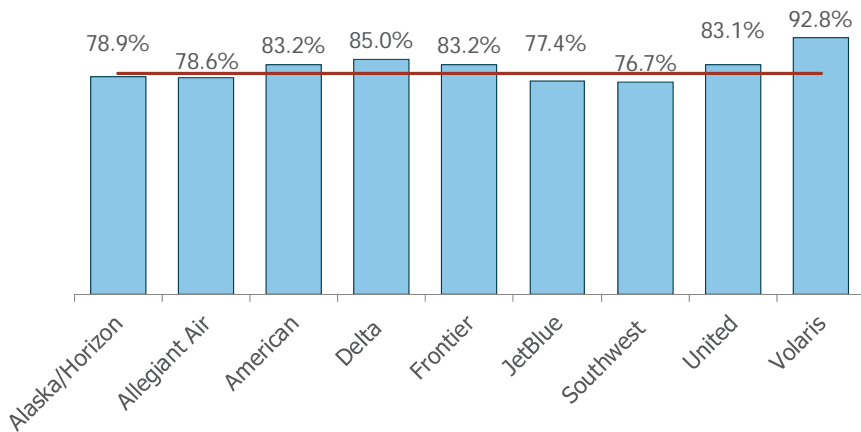


In December 2019, RNO served a total of 5,646 international passengers, an increase of 29.2% when compared to December 2018.

AVERAGE ENPLANED LOAD FACTOR



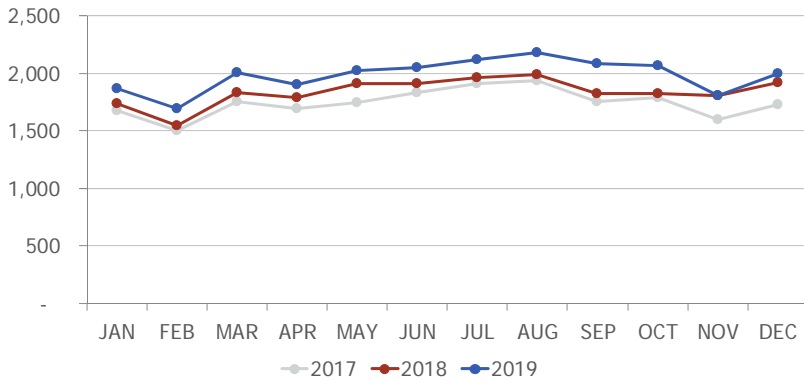
In December 2019, the average enplaned load factor at RNO was 80.1%, an increase of 4.3 pts. versus December 2018.



wemoveyou



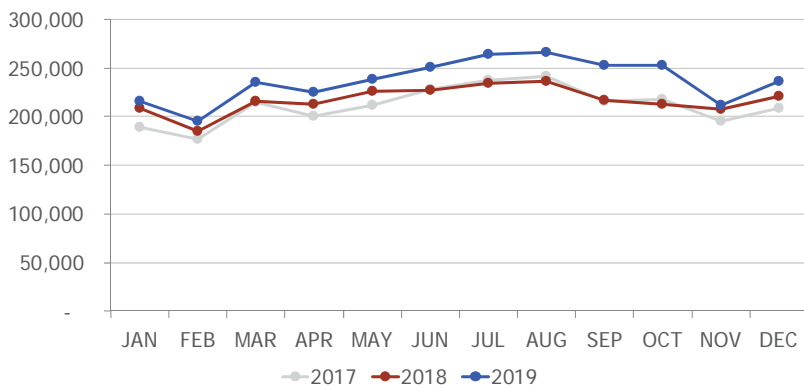
DEPARTURES



In December 2019, RNO handled 1,981 departures on nine commercial airlines, an increase of 4.2% when compared to December 2018.

This doesn't include charter operations on non-incumbent carriers.

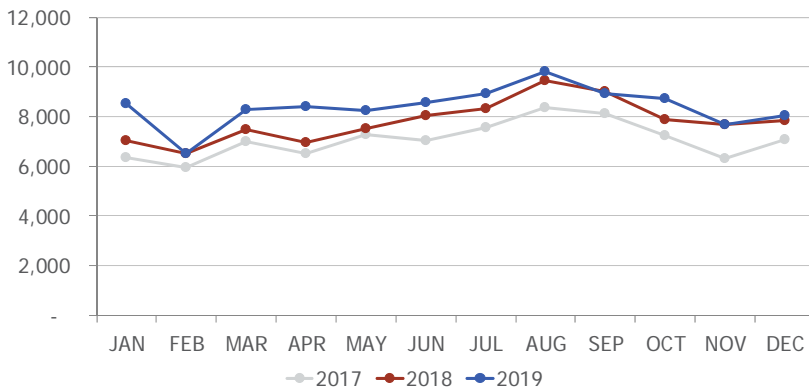
DEPARTING SEATS



In December 2019, nine airlines provided 234,361 departing seats, an increase of 6.6% when compared to December 2018.

This doesn't include charter operations on non-incumbent carriers.

TOTAL OPERATIONS



A total of 8,054 operations were handled at RNO in December 2019, an increase of 2.5% when compared to December 2018. Total operations include: Air Carrier, Air Taxi, General Aviation and Military operations as reported by the FAA.

Note: graphs on this page show scheduled departures, seats and operations

Recent and Upcoming Schedule Changes

- Alaska Airlines
 - ◆ Alaska Airlines offers non-stop flights between RNO and Seattle four times a day. The airline will offer this service five times a day from January 7, 2020, until May 12, 2020.
 - ◆ On January 7, 2020, Alaska Airlines suspended all flights between RNO and Boise.
 - ◆ On January 8, 2020, Alaska Airlines reduced the number of non-stop flights between RNO and San Jose from twice a day to once a day.
- American Airlines
 - ◆ On October 20, 2019, American Airlines temporarily suspended non-stop seasonal flights between RNO and Chicago O'Hare. This flight returns on May 7, 2020.
- Delta Air Lines
 - ◆ Delta Air Lines' non-stop flight between RNO and Atlanta will operate on the following schedule:
 - ◆ Four times a week from February 14, 2020, until April 29, 2020 (Monday, Wednesday, Friday, Saturday).
 - ◆ Five times a week from May 1, 2020, until May 31, 2020 (Monday, Thursday, Friday, Saturday, Sunday).
 - ◆ Daily starting June 4, 2020.
- Frontier Airlines
 - ◆ On November 14, 2019, Frontier Airlines started non-stop flights between RNO and Las Vegas four times a week (Monday, Thursday, Friday, Sunday).
 - ◆ On May 15, 2020, Frontier Airlines will resume non-stop flights between RNO and Denver (Monday, Wednesday, Friday, Sunday).
- JetBlue Airways
 - ◆ JetBlue Airways' non-stop flights between RNO and New York City will operate on the following schedule:
 - ◆ Four times a week from January 9, 2020, until February 10, 2020.
 - ◆ Five times a week starting February 13, 2020.
 - ◆ Daily starting June 11, 2020.
- Southwest Airlines
 - ◆ Southwest Airlines' non-stop seasonal flight between RNO and Dallas Love Field was temporarily suspended on August 4, 2019. This flight will return as a Saturday/Sunday service on March 7, 2020.
 - ◆ Southwest Airlines' non-stop flights between RNO and San Diego will operate three times a day.

Recent and Upcoming Schedule Changes

- ◆ Southwest Airlines' non-stop flights between RNO and Denver will operate on the following schedule:
 - ◆ Daily until February 9, 2020.
 - ◆ Once a day on Saturday and Sunday from February 15, 2020, until March 1, 2020.
 - ◆ Twice a day from March 7, 2020, until April 13, 2020, Monday through Saturday (once a day on Sunday).
 - ◆ Three times a day starting April 14, 2020, Monday through Friday (twice a day on weekends).
- ◆ Southwest Airlines' non-stop flights between RNO and San Jose will operate on the following schedule:
 - ◆ Two to three flights a day from January 6, 2020, until February 7, 2020.
 - ◆ Once to three flights a day starting February 8, 2020.
- ◆ Southwest Airlines temporarily suspended non-stop seasonal flights between RNO and Chicago Midway on October 27, 2019. This flight is expected to return in summer 2020.
- United Airlines
 - ◆ United Airlines will reduce the number of non-stop flights between RNO and Los Angeles from three times a day to twice a day from October 26, 2019, until February 12, 2020.
 - ◆ Starting May 8, 2020, United Airlines will increase non-stop flights between RNO and Denver from three flights a day to four flights a day.
- Volaris
 - ◆ Volaris offers non-stop flights between RNO and Guadalajara, Mexico, four days a week (Monday, Wednesday, Thursday and Friday).

wemoveyou



Total Passengers December-19						
	Passengers		% Diff.	Passengers		% Diff.
	2017	2018		2019		
JAN	284,553	312,125	9.7%	335,095	7.4%	
FEB	286,322	296,726	3.6%	306,800	3.4%	
MAR	353,651	356,112	0.7%	383,215	7.6%	
1st Quarter	924,526	964,963	4.4%	1,025,110	6.2%	
APR	302,078	325,428	7.7%	337,062	3.6%	
MAY	317,935	345,740	8.7%	354,311	2.5%	
JUN	367,600	389,103	5.8%	397,211	2.1%	
2nd Quarter	987,613	1,060,271	7.4%	1,088,584	2.7%	
JUL	400,754	414,529	3.4%	432,188	4.3%	
AUG	393,478	402,794	2.4%	431,640	7.2%	
SEP	345,280	362,831	5.1%	392,353	8.1%	
3rd Quarter	1,139,512	1,180,154	3.6%	1,256,181	6.4%	
OCT	336,433	347,591	3.3%	380,879	9.6%	
NOV	300,308	315,833	5.2%	318,022	0.7%	
DEC	326,989	341,283	4.4%	381,897	11.9%	
4th Quarter	963,730	1,004,707	4.3%	1,080,798	7.6%	
TOTAL	4,015,381	4,210,095	4.8%	4,450,673	5.7%	
YTD Total		4,210,095		4,450,673	5.7%	

Total Enplaned Passengers December-19				
Month	2017	2018	2019	% Diff.
JAN	143,070	156,747	168,909	7.8%
FEB	143,000	147,568	152,933	3.6%
MAR	179,473	181,141	195,310	7.8%
APR	150,827	161,913	166,676	2.9%
MAY	156,943	171,430	175,621	2.4%
JUN	182,045	193,777	197,397	1.9%
JUL	199,224	205,174	213,326	4.0%
AUG	192,726	198,874	211,958	6.6%
SEP	179,829	189,886	202,280	6.5%
OCT	169,259	174,084	193,859	11.4%
NOV	149,714	158,100	158,558	0.3%
DEC	161,640	166,795	187,914	12.7%
TOTAL	2,007,750	2,105,489	2,224,741	5.7%
YTD Total		2,105,489	2,224,741	5.7%

Total Deplaned Passengers				
Month	2017	2018	2019	% Diff.
JAN	141,483	155,378	166,186	7.0%
FEB	143,322	149,158	153,867	3.2%
MAR	174,178	174,971	187,905	7.4%
APR	151,251	163,515	170,386	4.2%
MAY	160,992	174,310	178,690	2.5%
JUN	185,555	195,326	199,814	2.3%
JUL	201,530	209,355	218,862	4.5%
AUG	200,752	203,920	219,682	7.7%
SEP	165,451	172,945	190,073	9.9%
OCT	167,174	173,507	187,020	7.8%
NOV	150,594	157,733	159,464	1.1%
DEC	165,349	174,488	193,983	11.2%
TOTAL	2,007,631	2,104,606	2,225,932	5.8%
YTD Total		2,104,606	2,225,932	5.8%

Enplaned Passengers & Load Factor				
Airline	Enplaned PAX	Dec-19	Dec-18	Diff.
Alaska/Horizon	20,745	78.9%	74.4%	4.4
Allegiant Air	3,941	78.6%	83.5%	-4.9
American	38,069	83.2%	80.1%	3.1
Delta	15,458	85.0%	80.1%	4.9
Frontier	2,397	83.2%	82.0%	1.3
JetBlue	6,041	77.4%	74.8%	2.6
Southwest	73,647	76.7%	73.6%	3.1
United	23,990	83.1%	74.6%	8.4
Volaris	3,323	92.8%	88.3%	4.5

Total Cargo December-19						
	2017	2018	% Diff.	2019		% Diff.
	Cargo in Pounds			Pounds	Metric Tons	
JAN	12,749,916	11,795,775	-7.5%	11,940,830	5,415	1.2%
FEB	12,023,060	11,417,480	-5.0%	11,559,065	5,242	1.2%
MAR	13,595,007	13,053,097	-4.0%	11,770,662	5,338	-9.8%
1st Quarter	38,367,983	36,266,352	-5.5%	35,270,557	15,996	-2.7%
APR	11,974,440	10,826,085	-9.6%	11,208,216	5,083	3.5%
MAY	12,671,643	12,245,815	-3.4%	12,273,193	5,566	0.2%
JUN	12,396,234	12,225,509	-1.4%	11,988,693	5,437	-1.9%
2nd Quarter	37,042,317	35,297,409	-4.7%	35,470,102	16,086	0.5%
JUL	11,454,156	12,233,364	6.8%	12,537,938	5,686	2.5%
AUG	13,472,975	13,689,777	1.6%	12,909,571	5,855	-5.7%
SEP	12,436,806	12,052,727	-3.1%	11,350,614	5,148	-5.8%
3rd Quarter	37,363,937	37,975,868	1.6%	36,798,123	16,688	-3.1%
OCT	12,169,329	12,548,739	3.1%	12,662,270	5,743	0.9%
NOV	12,446,633	12,645,887	1.6%	11,428,318	5,183	-9.6%
DEC	14,882,745	14,128,422	-5.1%	15,270,324	6,925	8.1%
4th Quarter	39,498,707	39,323,048	-0.4%	39,360,912	17,851	0.1%
TOTAL	152,272,944	148,862,677	-2.2%	146,899,694	66,621	-1.3%
YTD Total		148,862,677		146,899,694	66,621	-1.3%

wemoveyou

