



Reno-Tahoe International Airport

Passengers and Cargo Statistics Report

August 2023

U.S. DOMESTIC INDUSTRY & RNO OVERVIEW AUGUST 2023

Systemwide RNO Airlines Domestic Flights – year over year comparison

Number of Flights:	Up 4.1% vs. Aug 2022, down 11.3% vs. Aug 2019
Capacity of Seats:	Up 8.6% vs. Aug 2022, up 0.8% vs. Aug 2019
Crude Oil Average:	\$81.39 per barrel in Aug 2023 \$93.67 per barrel in Aug 2022

RNO Overview for August 2023 vs. August 2022

Total Passengers:	Up 7.0%
Avg. Enplaned Load Factor:	78.5%, down 1.5 pts.
Departures:	Up 2.0%
Departing Seats:	Up 10.2%
Cargo Volume:	Down 15.9%

RNO Overview for August 2023 vs. August 2019

Total Passengers:	Up 1.6%
Avg. Enplaned Load Factor:	Down 1.4 pts.
Departures:	Down 9.5%
Departing Seats:	Up 3.3%

*Source: Airline Activity and Performance Reports; Cirium Flight Schedules via Diio mi, U.S. Energy Information Administration
Note: U.S. Domestic capacity includes airlines that serve RNO.*

AUGUST 2023 SUMMARY

Reno-Tahoe International Airport (RNO) served 438,621 passengers in August 2023, an increase of 7.0% versus the same period last year.

In August 2023, RNO was served by 11 airlines to 22 non-stop destinations. The total seat capacity increased 10.2% and flights increased 2.0% when compared to August 2022. All U.S. airlines have migrated to using larger aircraft domestically, resulting in higher average seats per flight.

RNO handled 9,888,463 pounds of air cargo in August 2023, a decrease of 15.9% when compared to August 2022.

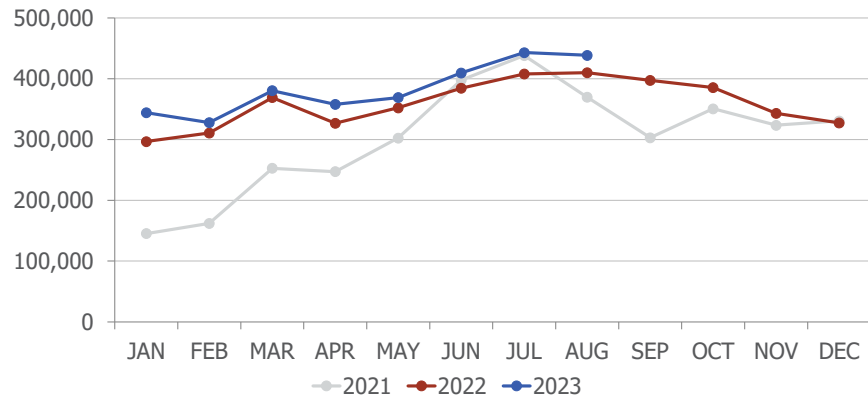
JSX Public Charters

JSX offers non-stop flights from RNO to Orange County and Burbank using a 30-seat Embraer 135/145 aircraft. JSX operates out of Stellar Aviation, a private Fixed Base Operator, located at 485 South Rock Blvd.

wemoveyou

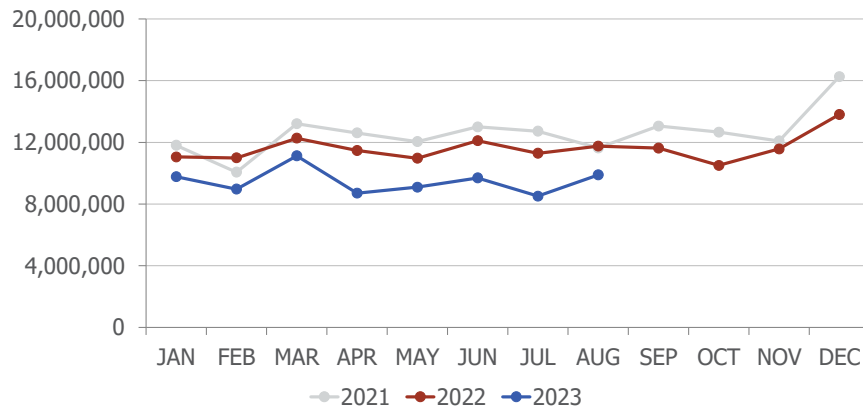


Passengers



Total Passengers			
	Aug-23	Aug-22	Difference
aha!	0	5,014	
Alaska/Horizon	40,643	35,193	15.5%
Allegiant Air	2,271	3,216	-29.4%
American	69,385	59,577	16.5%
Delta	37,935	33,559	13.0%
Frontier	0	3,759	
JetBlue	14,255	12,384	15.1%
Southwest	174,481	175,724	-0.7%
Spirit	17,041	12,125	
Sun Country	5,811	0	
United	70,783	62,084	14.0%
Volaris	6,016	5,561	8.2%

Cargo

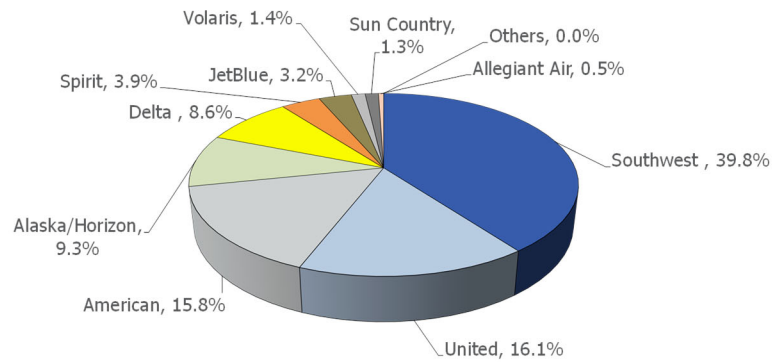


In August 2023, DHL cargo volume was down 22.3%, FedEx was down 12.9% and UPS was down 18.2% when compared to August 2022.

wemoveyou

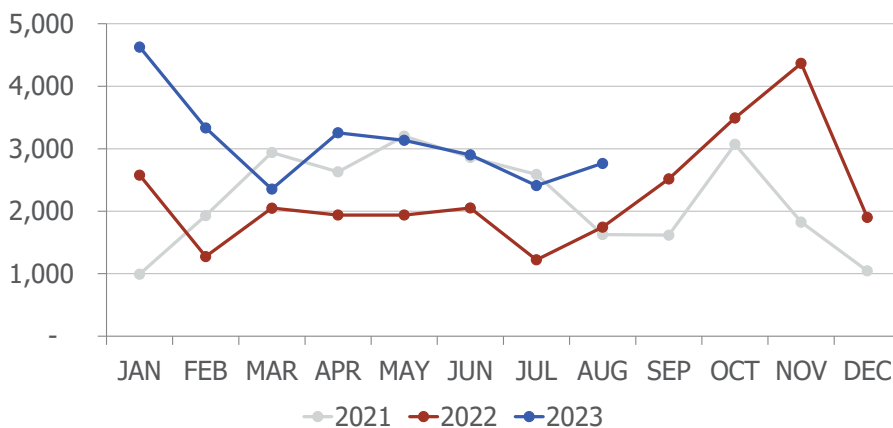


AIRLINE MARKET SHARE (passengers)



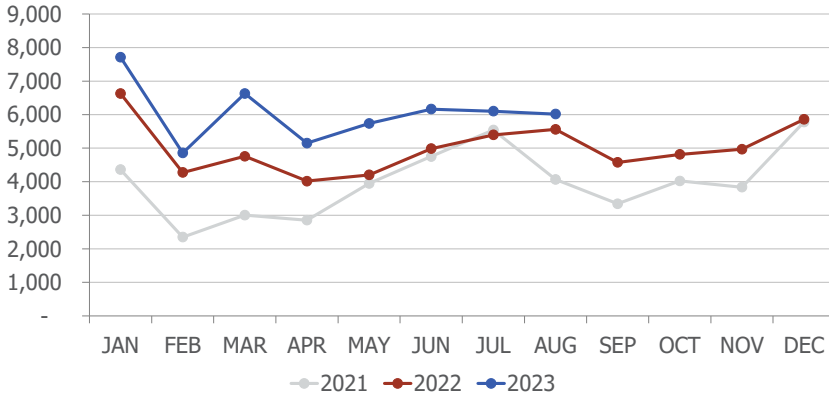
Airline Market Share			
	Aug-23	Aug-22	YOY Change
aha!	n/a	1.2%	n/a
Alaska/Horizon	9.3%	8.6%	0.7
Allegiant Air	0.5%	0.8%	(0.3)
American	15.8%	14.5%	1.3
Delta	8.6%	8.2%	0.5
Frontier	n/a	0.9%	n/a
JetBlue	3.2%	3.0%	0.2
Southwest	39.8%	42.9%	(3.1)
Spirit	3.9%	3.0%	0.9
Sun Country	1.3%	n/a	n/a
United	16.1%	15.1%	1.0
Volaris	1.4%	1.4%	0.0
Others	0.0%	0.4%	(0.4)

TOTAL CHARTER PASSENGERS



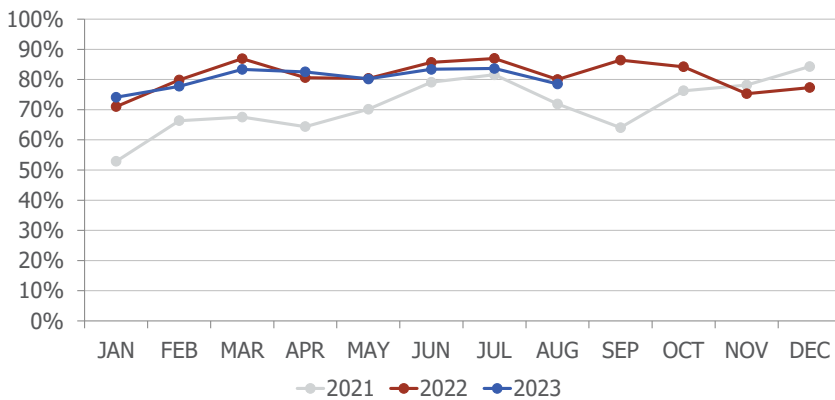
In August 2023, RNO served 2,766 passengers on charter flights, an increase of 58.4% when compared to August 2022.

TOTAL INTERNATIONAL PASSENGERS



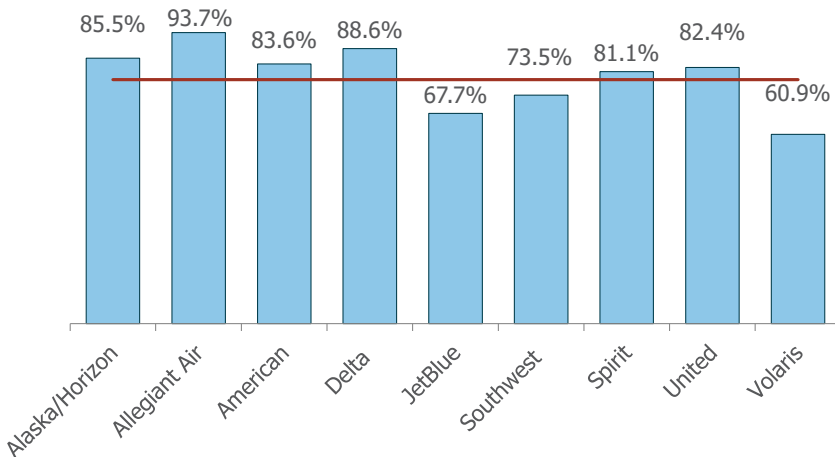
In August 2023, RNO served 6,016 international passengers, an increase of 8.2% when compared to August 2022.

AVERAGE ENPLANED LOAD FACTOR



In August 2023, RNO's average enplaned load factor was 78.5%, a decrease of 1.5 pts. versus August 2022.

Including charters, Sun Country's enplaned load factor was 70.6% in August 2023.

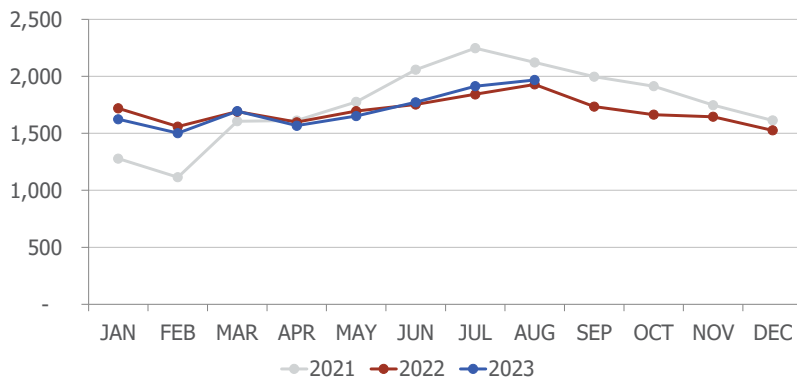


The red horizontal line on the left represents RNO's average enplaned load factor.

wemoveyou

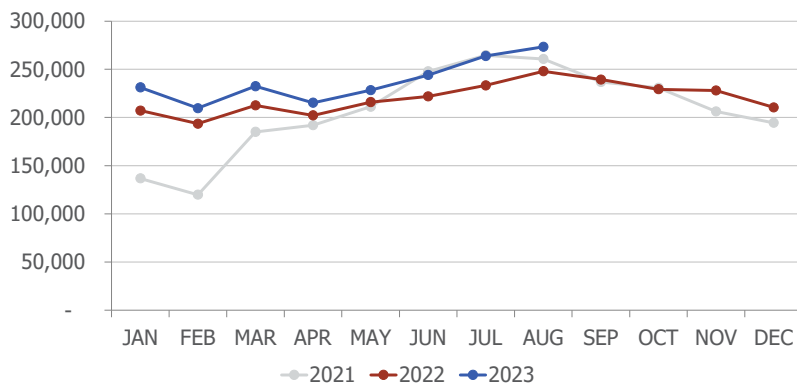


DEPARTURES



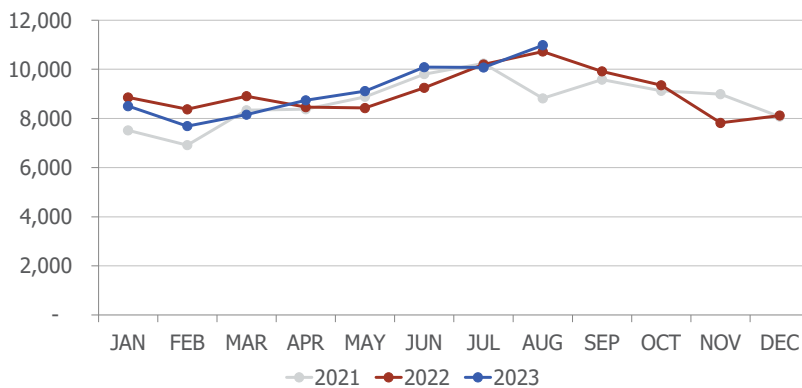
In August 2023, RNO handled 1,968 departures, an increase of 2.0% when compared to August 2022.

DEPARTING SEATS



In August 2023, RNO offered 273,330 departing seats, an increase of 10.2% when compared to August 2022.

TOTAL OPERATIONS



A total of 10,981 operations were handled at RNO in August 2023, an increase of 2.4% when compared to August 2022. Total operations include: Air Carrier, Air Taxi, General Aviation and Military operations as reported by the FAA.

wemoveyou



October 2023 RNO Flight Schedule

Destination	Airlines	Total Departures	Details
Austin	American	26	Daily. No flight on Sat
Burbank	Southwest	31	Daily
Chicago-Midway	Southwest	9	Sat and Sun only
Chicago-O'Hare	United	8	Sat and Sun only. No flight on 29
Dallas/Fort Worth	American	90	Three daily. Two on 30 and 31
Denver	Southwest	90	Three daily. Once on Sat. Four on Sun
	United	121	Four daily. Three daily on 29, 30 and 31
Guadalajara	Volaris	22	Five weekly flights, Mon - Fri
Las Vegas	Allegiant	9	Twice weekly. Thu and Sun
	Southwest	305	10 to 11 daily Mon-Fri, seven Sat, nine on Sun
	Spirit	90	Three daily. Twice on 3, 4 and 31
Long Beach	Southwest	58	Twice daily. One on Sat
Los Angeles	Delta	92	Three daily
	JetBlue	31	Daily
	Southwest	36	Daily. Two on Sun
	United	62	Two daily
Minneapolis/St. Paul	Delta	4	Sat only
	Sun Country	9	Twice weekly. Mon and Thu. Once on 29
Oakland	Southwest	53	Twice daily. Once on Sat and Sun
Phoenix	American	111	Four daily. Three on Tue, Wed and Sat
	Southwest	79	Three daily. Twice on Tue, Wed and Sat
Portland	Alaska	53	Twice Daily. Once on Tue and Sat
Salt Lake City	Delta	89	Three daily. Twice from 28 through 31
San Diego	Southwest	78	Three daily. Once on Sat. Two on Sun
San Francisco	United	124	Four daily
San Jose	Southwest	31	Daily
Seattle	Alaska	93	Three daily
	Multiple airlines		

9.28.2023

wemoveyou



Total Passengers Aug-23					
	Passengers		% Diff.	Passengers	
	2021	2022		2023	YOY % Diff.
JAN	145,421	296,641	104.0%	344,268	16.1%
FEB	162,071	310,738	91.7%	327,934	5.5%
MAR	252,828	368,946	45.9%	380,363	3.1%
1st QTR	560,320	976,325	74.2%	1,052,565	7.8%
APR	247,220	326,787	32.2%	357,924	9.5%
MAY	302,403	352,255	16.5%	368,930	4.7%
JUN	397,906	384,429	-3.4%	409,467	6.5%
2nd QTR	947,529	1,063,471	12.2%	1,136,321	6.9%
JUL	438,168	407,867	-6.9%	442,942	8.6%
AUG	369,686	409,942	10.9%	438,621	7.0%
SEP	302,929	397,404	31.2%		
3rd QTR	1,110,783	1,215,213	9.4%	881,563	-27.5%
OCT	350,631	385,466	9.9%		
NOV	323,508	343,130	6.1%		
DEC	330,687	327,353	-1.0%		
4th QTR	1,004,826	1,055,949	5.1%	0	
TOTAL	3,623,458	4,310,958	19.0%		
YTD		2,857,605		3,070,449	7.4%

Total Enplaned Passengers Aug-23				
Month	2021	2022	2023	% Diff.
JAN	72,887	147,773	171,374	16.0%
FEB	80,263	155,233	162,964	5.0%
MAR	126,359	185,671	193,748	4.4%
APR	125,009	163,973	177,665	8.4%
MAY	149,486	174,487	183,112	4.9%
JUN	197,261	191,234	203,452	6.4%
JUL	217,124	203,375	220,645	8.5%
AUG	188,207	199,365	214,616	7.6%
SEP	152,267	206,819		
OCT	177,407	193,074		
NOV	161,926	171,626		
DEC	164,561	162,680		
TOTAL	1,812,757	2,155,310		
YTD		1,421,111	1,527,576	7.5%

Total Deplaned Passengers				
Month	2021	2022	2023	% Diff.
JAN	72,534	148,868	172,894	16.1%
FEB	81,808	155,505	164,970	6.1%
MAR	126,469	183,275	186,615	1.8%
APR	122,211	162,814	180,259	10.7%
MAY	152,917	177,768	185,818	4.5%
JUN	200,645	193,195	206,015	6.6%
JUL	221,044	204,492	222,297	8.7%
AUG	181,479	210,577	224,005	6.4%
SEP	150,662	190,585		
OCT	173,224	192,392		
NOV	161,582	171,504		
DEC	166,126	164,673		
TOTAL	1,810,701	2,155,648		
YTD		1,436,494	1,542,873	7.4%

Total Cargo Volume in Pounds Aug-23						
	2021	2022	% Diff.	2023		YOY %
	Cargo in Pounds			Pounds	Metric Tons	Diff.
JAN	11,805,228	11,052,383	-6.4%	9,768,668	4,430	-11.6%
FEB	10,068,001	10,991,076	9.2%	8,963,956	4,065	-18.4%
MAR	13,204,912	12,265,793	-7.1%	11,124,124	5,045	-9.3%
1st QTR	35,078,141	34,309,252	-2.2%	29,856,748	13,540	-13.0%
APR	12,611,682	11,470,613	-9.0%	8,704,717	3,948	-24.1%
MAY	12,048,247	10,966,757	-9.0%	9,094,192	4,124	-17.1%
JUN	13,000,085	12,105,721	-6.9%	9,694,997	4,397	-19.9%
2nd QTR	37,660,014	34,543,091	-8.3%	27,493,906	12,469	-20.4%
JUL	12,722,035	11,289,066	-11.3%	8,508,207	3,859	-24.6%
AUG	11,636,003	11,751,228	1.0%	9,888,463	4,485	-15.9%
SEP	13,055,518	11,624,360	-11.0%			
3rd QTR	37,413,556	34,664,654	-7.3%			
OCT	12,660,541	10,502,407	-17.0%			
NOV	12,089,489	11,569,577	-4.3%			
DEC	16,260,767	13,806,179	-15.1%			
4th QTR	41,010,797	35,878,163	-12.5%			
TOTAL	151,162,508	139,395,160	-7.8%			
YTD		91,892,637		75,747,324	34,353	-17.6%

Enplaned Passengers & Load Factor				
Airline	Enplaned PAX	Aug-23	Aug-22	Diff.
aha!	0	n/a	58.7%	n/a
Alaska/Horizon	19,954	85.5%	85.2%	0.2
Allegiant Air	1,169	93.7%	79.8%	13.8
American	33,703	83.6%	80.2%	3.4
Delta	19,108	88.6%	90.6%	-2.0
Frontier	0	n/a	82.2%	n/a
JetBlue	6,602	67.7%	68.9%	-1.3
Southwest	85,906	73.5%	81.3%	-7.7
Spirit	8,499	81.1%	73.0%	8.1
Sun Country	2,890	70.6%	n/a	n/a
United	34,278	82.4%	77.5%	5.0
Volaris	2,507	60.9%	52.1%	8.8

wemoveyou

