



Reno-Tahoe  
Airport  
Authority

# Reno-Tahoe International Airport

## Passengers and Cargo Statistics Report

### July 2023



## U.S. DOMESTIC INDUSTRY & RNO OVERVIEW JULY 2023

### Systemwide RNO Airlines Domestic Flights – year over year comparison

Number of Flights:	Up 3.0% vs. July 2022, down 11.3% vs. July 2019
Capacity of Seats:	Up 7.8% vs. July 2022, up 0.3% vs. July 2019
Crude Oil Average:	\$76.07 per barrel in July 2023 \$101.62 per barrel in July 2022

### RNO Overview for July 2023 vs. July 2022

Total Passengers:	Up 8.6%
Avg. Enplaned Load Factor:	83.6%, down 3.3 pts.
Departures:	Up 3.9%
Departing Seats:	Up 13.1%
Cargo Volume:	Down 24.6%

### RNO Overview for July 2023 vs. July 2019

Total Passengers:	Up 2.5%
Avg. Enplaned Load Factor:	Up 2.6 pts.
Departures:	Down 9.5%
Departing Seats:	Up 0.3%

*Source: Airline Activity and Performance Reports; Cirium Flight Schedules via Diio mi, U.S. Energy Information Administration  
Note: U.S. Domestic capacity includes airlines that serve RNO.*

## JULY 2023 SUMMARY

Reno-Tahoe International Airport (RNO) served 442,942 passengers in July 2023, an increase of 8.6% versus the same period last year.

In July 2023, RNO was served by 11 airlines to 22 non-stop destinations. The total seat capacity increased 13.1% and flights increased 3.9% when compared to July 2022.

RNO handled 8,508,207 pounds of air cargo in July 2023, a decrease of 24.6% when compared to July 2022.

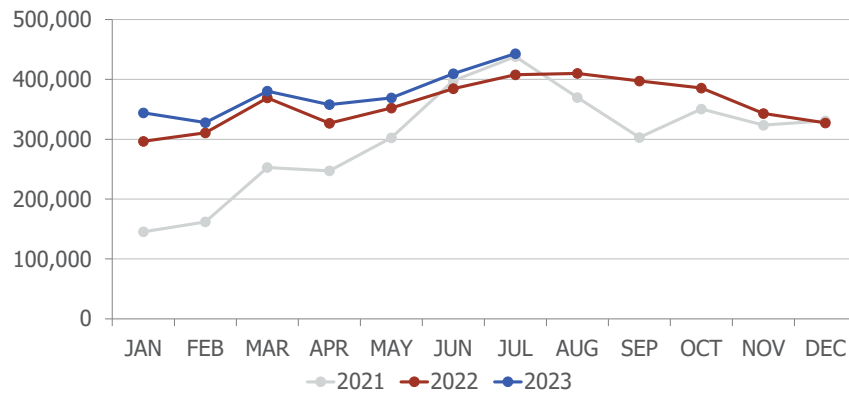
### JSX Public Charters

JSX offers non-stop flights from RNO to Orange County and Burbank using a 30-seat Embraer 135/145 aircraft. JSX operates out of Stellar Aviation, a private Fixed Base Operator, located at 485 South Rock Blvd.

wemoveyou

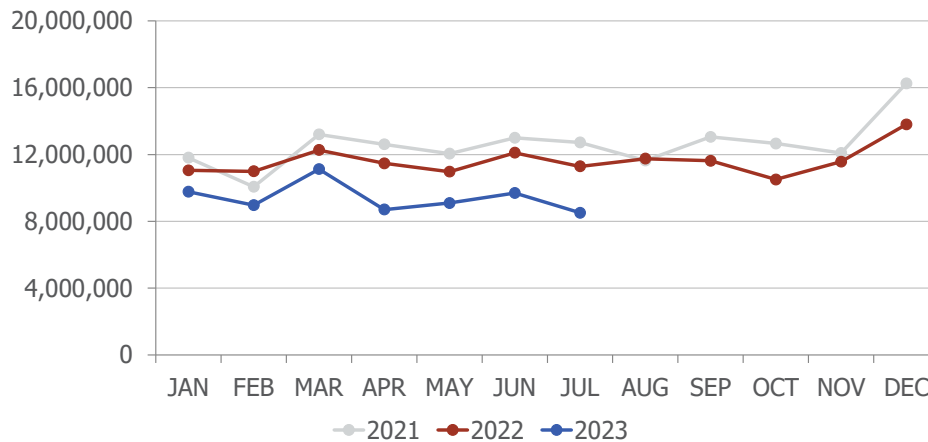


## Passengers



Total Passengers			
	Jul-23	Jul-22	Difference
aha!	0	5,917	
Alaska/Horizon	41,155	33,865	21.5%
Allegiant Air	2,648	5,050	-47.6%
American	66,482	53,031	25.4%
Delta	39,258	32,717	20.0%
Frontier	0	4,330	
JetBlue	14,125	12,747	10.8%
Southwest	183,636	185,664	-1.1%
Spirit	17,935	0	
Sun Country	5,563	0	
United	66,039	67,926	-2.8%
Volaris	6,101	5,396	13.1%

## Cargo

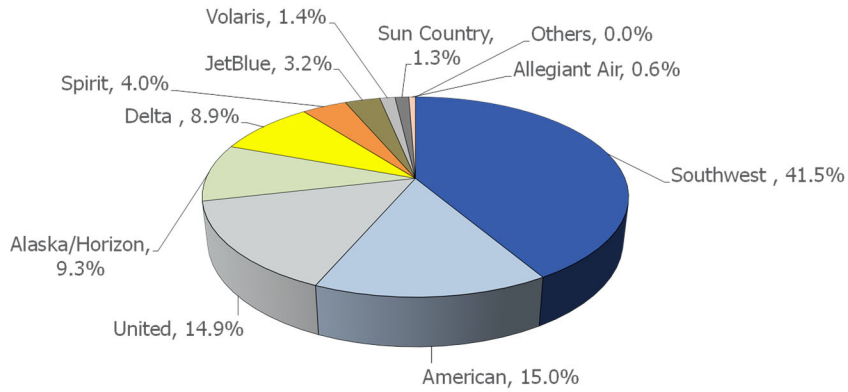


In July 2023, DHL cargo volume was down 17.7%, FedEx was down 27.0% and UPS was down 21.7% when compared to July 2022.

wemoveyou

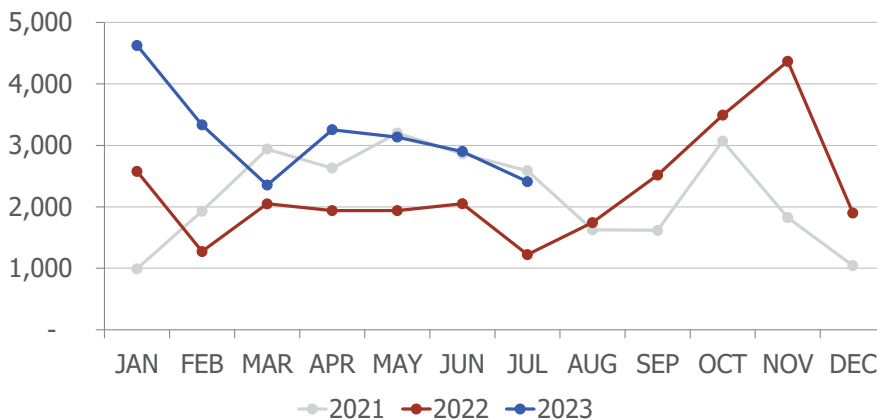


## AIRLINE MARKET SHARE (passengers)



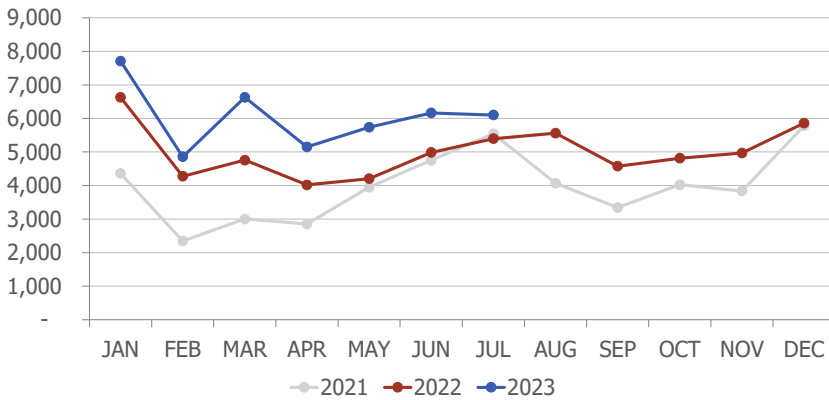
Airline Market Share			
	Jul-23	Jul-22	YOY Change
aha!	n/a	1.5%	n/a
Alaska/Horizon	9.3%	8.3%	1.0
Allegiant Air	0.6%	1.2%	(0.6)
American	15.0%	13.0%	2.0
Delta	8.9%	8.0%	0.8
Frontier	n/a	1.1%	n/a
JetBlue	3.2%	3.1%	0.1
Southwest	41.5%	45.5%	(4.1)
Spirit	4.0%	n/a	n/a
Sun Country	1.3%	n/a	n/a
United	14.9%	16.7%	(1.7)
Volaris	1.4%	1.3%	0.1
Others	0.0%	0.3%	(0.3)

## TOTAL CHARTER PASSENGERS



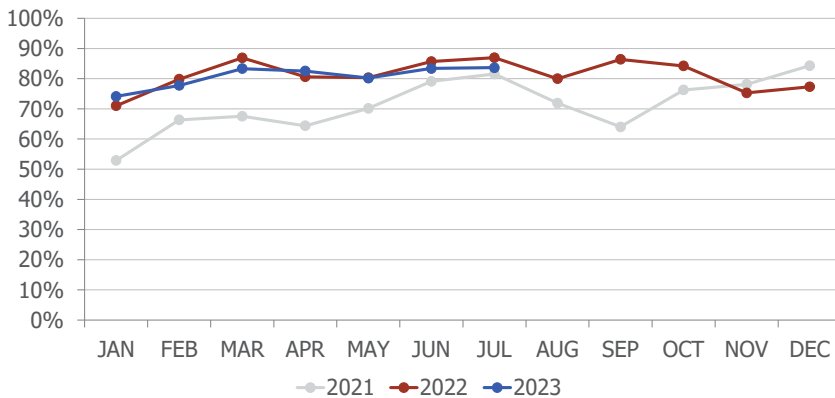
In July 2023, RNO served 2,410 passengers on charter flights, an increase of 96.9% when compared to July 2022.

## TOTAL INTERNATIONAL PASSENGERS



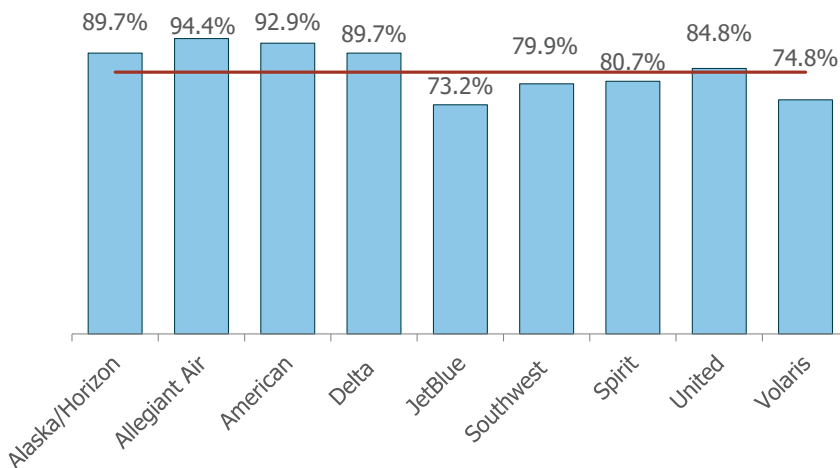
In July 2023, RNO served 6,101 international passengers, an increase of 13.1% when compared to July 2022.

## AVERAGE ENPLANED LOAD FACTOR



In July 2023, RNO's average enplaned load factor was 83.6%, a decrease of 3.3 pts. versus July 2022.

Including charters, Sun Country's enplaned load factor was 65.1% in July 2023.

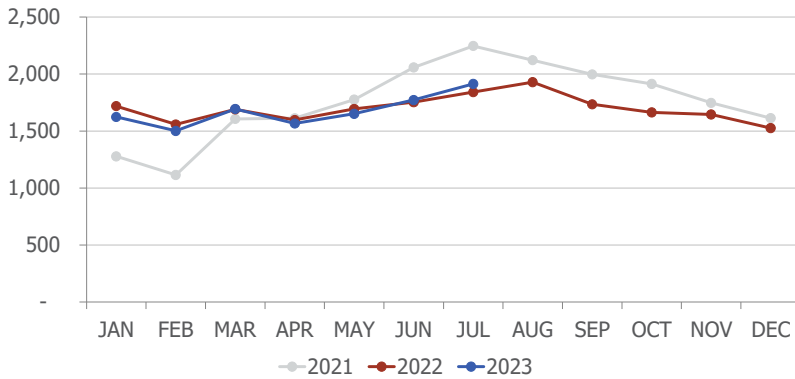


The red horizontal line on the left represents RNO's average enplaned load factor.

wemoveyou

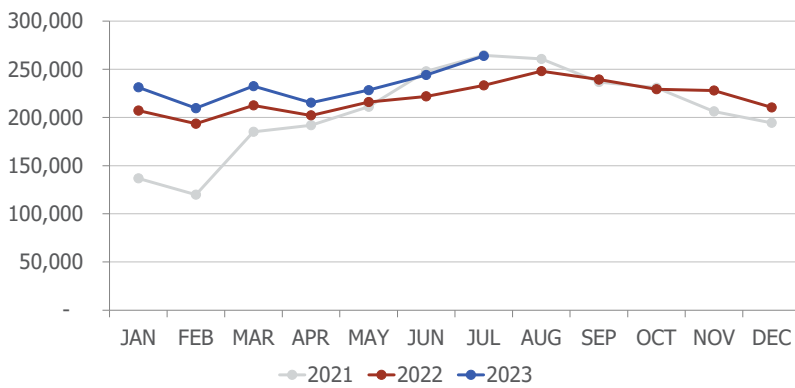


## DEPARTURES



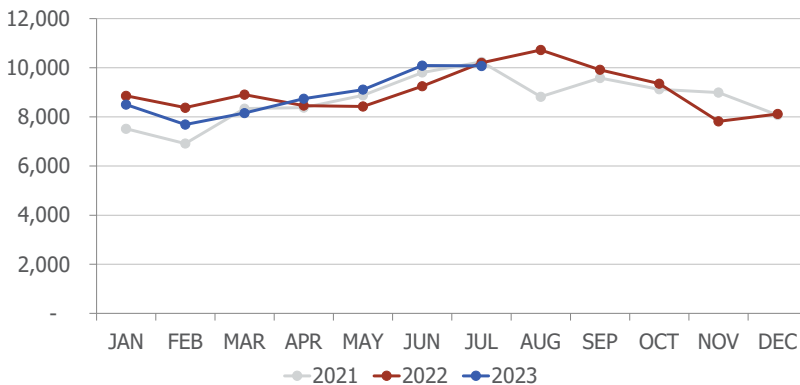
In July 2023, RNO handled 1,914 departures, an increase of 3.9% when compared to July 2022.

## DEPARTING SEATS



In July 2023, RNO offered 263,831 departing seats, an increase of 13.1% when compared to July 2022.

## TOTAL OPERATIONS



A total of 10,074 operations were handled at RNO in July 2023, a decrease of 1.2% when compared to July 2022. Total operations include: Air Carrier, Air Taxi, General Aviation and Military operations as reported by the FAA.

wemoveyou



## September 2023 RNO Flight Schedule

Destination	Airlines	Total Departures	Details
<b>Austin</b>	American	24	Daily. No flight on Sat
<b>Burbank</b>	Southwest	30	Daily
<b>Chicago-Midway</b>	Southwest	7	starting on Sep 9. Sat and Sun only
<b>Chicago-O'Hare</b>	United	11	Sat and Sun only. Flights on 1 and 4
<b>Dallas-Love</b>	Southwest	1	Flight on Sep 2
<b>Dallas/Fort Worth</b>	American	91	Three daily
<b>Denver</b>	Southwest	87	Three flights a day. Two on Sat
	United	123	Four daily
<b>Guadalajara</b>	Volaris	21	Five weekly flights, Mon - Fri
<b>Houston-Intercontinental</b>	United	2	Flights on Sep 2 and 3
<b>Las Vegas</b>	Allegiant	8	Twice weekly. Thu and Sun
	Southwest	286	10 to 11 daily Mon-Fri, six on Sat, eight on Sun
	Spirit	74	Two to three daily
<b>Long Beach</b>	Southwest	59	Twice daily. Once Sep 2
<b>Los Angeles</b>	Alaska	3	Flights on Sep 1, 3 and 4
	American	12	One to three flights Sep 1-5
	Delta	89	Three daily
	JetBlue	30	Daily
	Southwest	44	Twice daily. Once on Tue, Wed, Sat and Sun
	United	60	Twice daily
<b>Minneapolis/St. Paul</b>	Delta	7	Sat only. Flights on 1, 3 and 5
	Sun County	8	Twice weekly. Thu and Sun
<b>New York-JFK</b>	JetBlue	5	Daily Sept 1-5
<b>Newark</b>	United	2	Flights on 4 and 5
<b>Oakland</b>	Southwest	52	Twice daily. Once on Sat and Sun
<b>Phoenix</b>	American	114	Three to four daily
	Southwest	63	Twice daily. Three on Sun
<b>Portland</b>	Alaska	62	Twice daily
<b>Salt Lake City</b>	Delta	90	Three daily
<b>San Diego</b>	Southwest	63	Twice daily
<b>San Francisco</b>	United	117	Four daily
<b>San Jose</b>	Southwest	29	Daily. No flights on Sat
<b>Seattle</b>	Alaska	117	Four daily
	Multiple airlines		

8.28.2023

wemoveyou



Total Passengers Jul-23					
	Passengers		% Diff.	Passengers	
	2021	2022		2023	YOY % Diff.
JAN	145,421	296,641	104.0%	344,268	16.1%
FEB	162,071	310,738	91.7%	327,934	5.5%
MAR	252,828	368,946	45.9%	380,363	3.1%
<b>1st QTR</b>	<b>560,320</b>	<b>976,325</b>	<b>74.2%</b>	<b>1,052,565</b>	<b>7.8%</b>
APR	247,220	326,787	32.2%	357,924	9.5%
MAY	302,403	352,255	16.5%	368,930	4.7%
JUN	397,906	384,429	-3.4%	409,467	6.5%
<b>2nd QTR</b>	<b>947,529</b>	<b>1,063,471</b>	<b>12.2%</b>	<b>1,136,321</b>	<b>6.9%</b>
JUL	438,168	407,867	-6.9%	442,942	8.6%
AUG	369,686	409,942	10.9%		
SEP	302,929	397,404	31.2%		
<b>3rd QTR</b>	<b>1,110,783</b>	<b>1,215,213</b>	<b>9.4%</b>	<b>442,942</b>	<b>-63.6%</b>
OCT	350,631	385,466	9.9%		
NOV	323,508	343,130	6.1%		
DEC	330,687	327,353	-1.0%		
<b>4th QTR</b>	<b>1,004,826</b>	<b>1,055,949</b>	<b>5.1%</b>	<b>0</b>	
<b>TOTAL</b>	<b>3,623,458</b>	<b>4,310,958</b>	<b>19.0%</b>		
<b>YTD</b>		2,447,663		2,631,828	7.5%

Total Enplaned Passengers Jul-23				
Month	2021	2022	2023	% Diff.
JAN	72,887	147,773	171,374	16.0%
FEB	80,263	155,233	162,964	5.0%
MAR	126,359	185,671	193,748	4.4%
APR	125,009	163,973	177,665	8.4%
MAY	149,486	174,487	183,112	4.9%
JUN	197,261	191,234	203,452	6.4%
JUL	217,124	203,375	220,645	8.5%
AUG	188,207	199,365		
SEP	152,267	206,819		
OCT	177,407	193,074		
NOV	161,926	171,626		
DEC	164,561	162,680		
<b>TOTAL</b>	<b>1,812,757</b>	<b>2,155,310</b>		
<b>YTD</b>		1,221,746	1,312,960	7.5%

Total Deplaned Passengers				
Month	2021	2022	2023	% Diff.
JAN	72,534	148,868	172,894	16.1%
FEB	81,808	155,505	164,970	6.1%
MAR	126,469	183,275	186,615	1.8%
APR	122,211	162,814	180,259	10.7%
MAY	152,917	177,768	185,818	4.5%
JUN	200,645	193,195	206,015	6.6%
JUL	221,044	204,492	222,297	8.7%
AUG	181,479	210,577		
SEP	150,662	190,585		
OCT	173,224	192,392		
NOV	161,582	171,504		
DEC	166,126	164,673		
<b>TOTAL</b>	<b>1,810,701</b>	<b>2,155,648</b>		
<b>YTD</b>		1,225,917	1,318,868	7.6%

Total Cargo Volume in Pounds Jul-23						
	2021	2022	% Diff.	2023		YOY %
	Cargo in Pounds			Pounds	Metric Tons	Diff.
JAN	11,805,228	11,052,383	-6.4%	9,768,668	4,430	-11.6%
FEB	10,068,001	10,991,076	9.2%	8,963,956	4,065	-18.4%
MAR	13,204,912	12,265,793	-7.1%	11,124,124	5,045	-9.3%
1st QTR	35,078,141	34,309,252	-2.2%	29,856,748	13,540	-13.0%
APR	12,611,682	11,470,613	-9.0%	8,704,717	3,948	-24.1%
MAY	12,048,247	10,966,757	-9.0%	9,094,192	4,124	-17.1%
JUN	13,000,085	12,105,721	-6.9%	9,694,997	4,397	-19.9%
2nd QTR	37,660,014	34,543,091	-8.3%	27,493,906	12,469	-20.4%
JUL	12,722,035	11,289,066	-11.3%	8,508,207	3,859	-24.6%
AUG	11,636,003	11,751,228	1.0%			
SEP	13,055,518	11,624,360	-11.0%			
3rd QTR	37,413,556	34,664,654	-7.3%			
OCT	12,660,541	10,502,407	-17.0%			
NOV	12,089,489	11,569,577	-4.3%			
DEC	16,260,767	13,806,179	-15.1%			
4th QTR	41,010,797	35,878,163	-12.5%			
TOTAL	151,162,508	139,395,160	-7.8%			
YTD		80,141,409		65,858,861	29,868	-17.8%

Enplaned Passengers & Load Factor				
Airline	Enplaned PAX	Jul-23	Jul-22	Diff.
aha!	0	n/a	62.0%	n/a
Alaska/Horizon	20,754	89.7%	91.0%	-1.3
Allegiant Air	1,325	94.4%	90.3%	4.1
American	33,243	92.9%	88.3%	4.6
Delta	19,573	89.7%	90.1%	-0.4
Frontier	0	n/a	89.2%	n/a
JetBlue	6,670	73.2%	72.7%	0.5
Southwest	92,139	79.9%	87.8%	-7.8
Spirit	9,153	80.7%	n/a	n/a
Sun Country	2,663	65.1%	n/a	n/a
United	32,313	84.8%	87.9%	-3.1
Volaris	2,812	74.8%	65.3%	9.5

wemoveyou

