



Reno-Tahoe
Airport
Authority

Reno-Tahoe International Airport

Passengers and Cargo Statistics Report

October 2023



RNO OVERVIEW OCTOBER 2023

RNO Overview for October 2023 vs. October 2022

Total Passengers:	Up 2.8%
Avg. Enplaned Load Factor:	77.0%, down 7.2 pts.
Departures:	Up 9.6%
Departing Seats:	Up 12%
Cargo Volume:	Down 16.9%

RNO Overview for October 2023 vs. October 2019

Total Passengers:	Up 4.0%
Avg. Enplaned Load Factor:	Down 0.1 pts.
Departures:	Down 11.5%
Departing Seats:	Up 2.3%

Source: Airline Activity and Performance Reports; Cirium Flight Schedules via Diio mi.

SUMMARY

Reno-Tahoe International Airport (RNO) served 396,147 passengers in October 2023, an increase of 2.8% versus the same period last year.

In October 2023, RNO was served by 11 airlines to 20 non-stop destinations. The total seat capacity increased 12% and flights increased 9.6% when compared to October 2022.

RNO handled 8,731,063 pounds of air cargo in October 2023, a decrease of 16.9% when compared to October 2022.

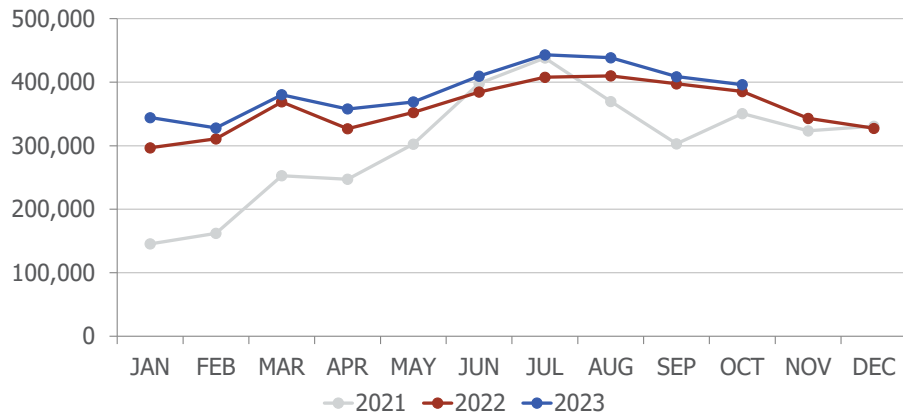
JSX Public Charters

JSX offers non-stop flights from RNO to Orange County and Burbank using a 30-seat Embraer 135/145 aircraft. JSX operates out of Stellar Aviation, a private Fixed Base Operator, located at 485 South Rock Blvd.

wemoveyou

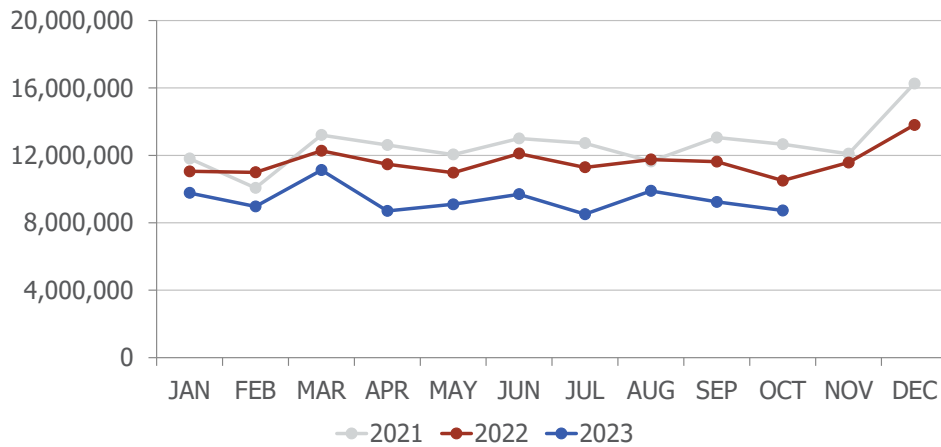


Passengers



Total Passengers			
	Oct-23	Oct-22	Difference
Alaska/Horizon	28,800	25,007	15.2%
Allegiant Air	2,088	2,301	-9.3%
American	53,148	66,471	-20.0%
Delta	33,451	33,646	-0.6%
Frontier	0	3,201	
JetBlue	6,654	5,718	16.4%
Southwest	170,676	164,549	3.7%
Spirit	24,974	16,808	48.6%
Sun Country	7,572	5,044	50.1%
United	63,316	57,908	9.3%
Volaris	5,468	4,813	13.6%

Cargo

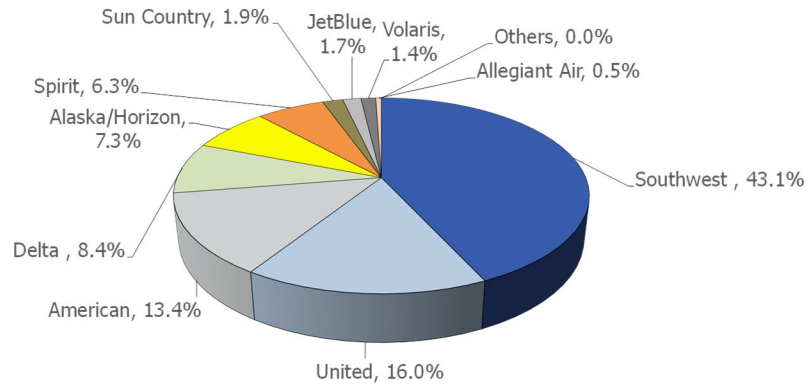


In October 2023, DHL cargo volume was down 28.4%, FedEx was down 14.4% and UPS was down 19.1% when compared to October 2022.

wemoveyou

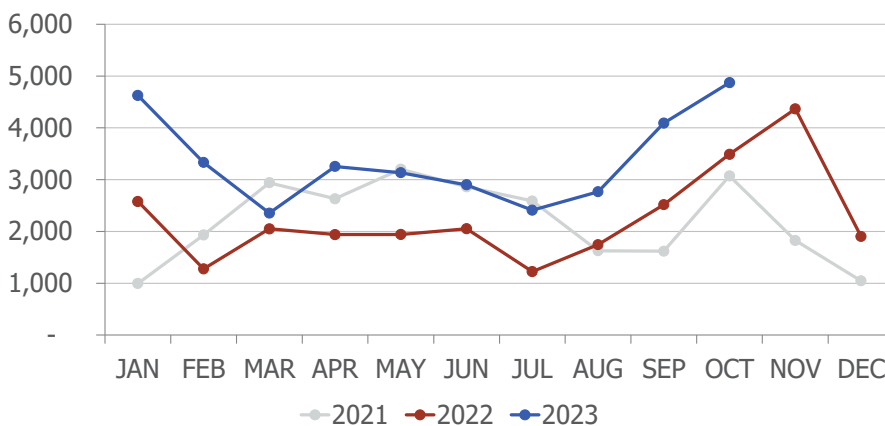


AIRLINE MARKET SHARE (passengers)



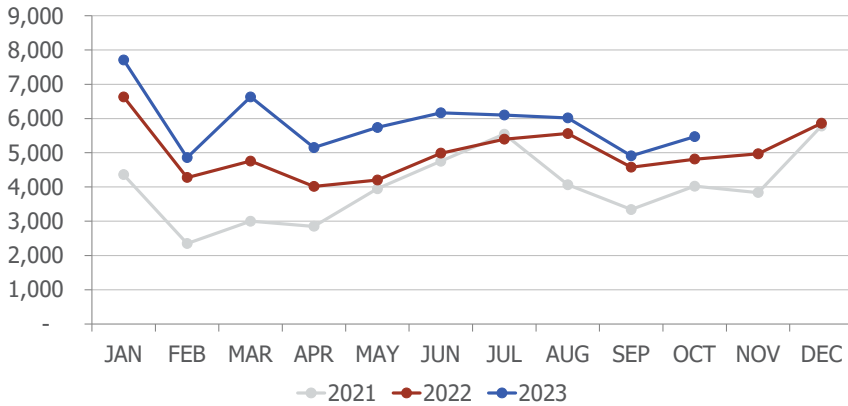
Airline Market Share			
	Oct-23	Oct-22	YOY Change
Alaska/Horizon	7.3%	6.5%	0.8
Allegiant Air	0.5%	0.6%	(0.1)
American	13.4%	17.2%	(3.8)
Delta	8.4%	8.7%	(0.3)
Frontier	n/a	0.8%	n/a
JetBlue	1.7%	1.5%	0.2
Southwest	43.1%	42.7%	0.4
Spirit	6.3%	4.4%	1.9
Sun Country	1.9%	1.3%	0.6
United	16.0%	15.0%	1.0
Volaris	1.4%	1.2%	0.1
Others	0.0%	0.0%	0.0

TOTAL CHARTER PASSENGERS



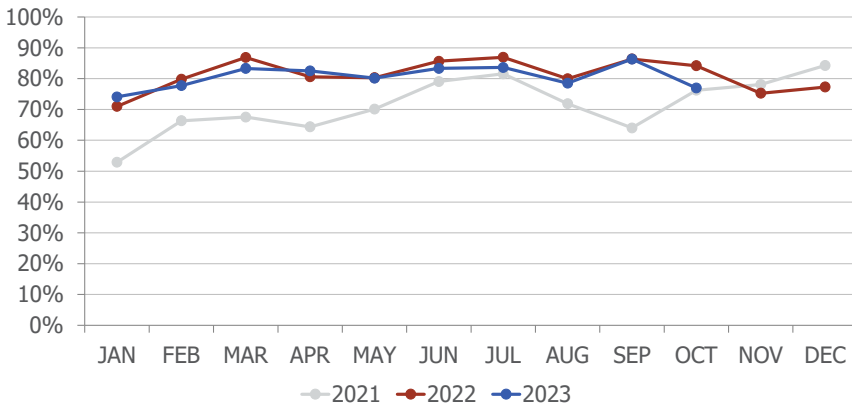
In October 2023, RNO served 4,873 passengers on charter flights, an increase of 39.6% when compared to October 2022.

TOTAL INTERNATIONAL PASSENGERS



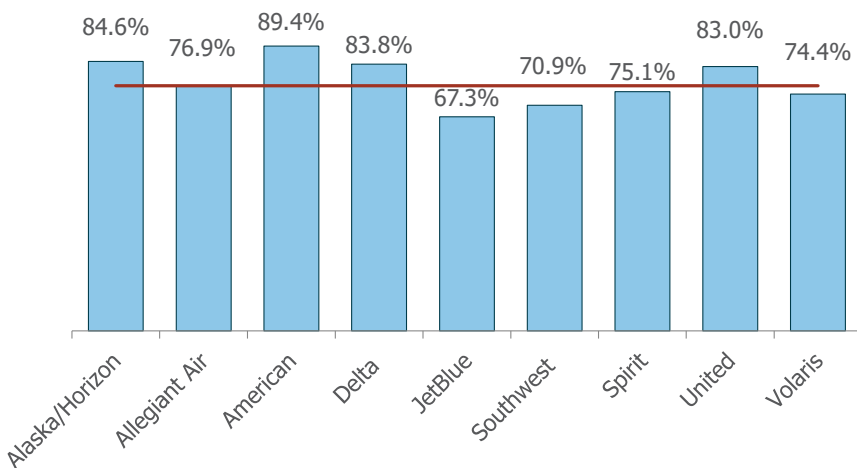
In October 2023, RNO served 5,468 international passengers, an increase of 13.6% when compared to October 2022.

AVERAGE ENPLANED LOAD FACTOR



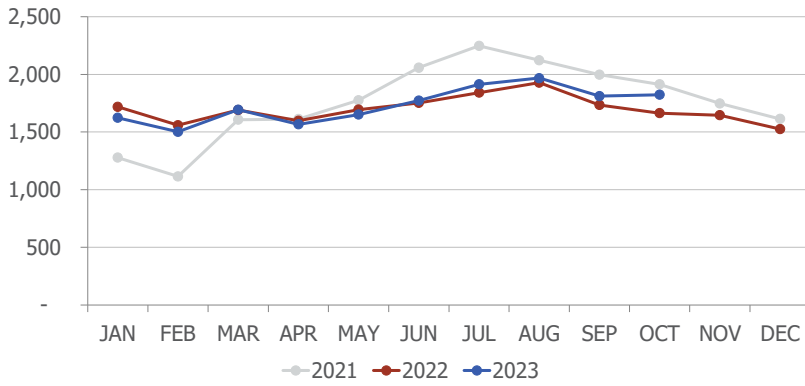
In October 2023, RNO's average enplaned load factor was 77.0%, down 7.2 pts. when compared to October 2022.

Including charters, Sun Country's enplaned load factor was 67.7% in October 2023.



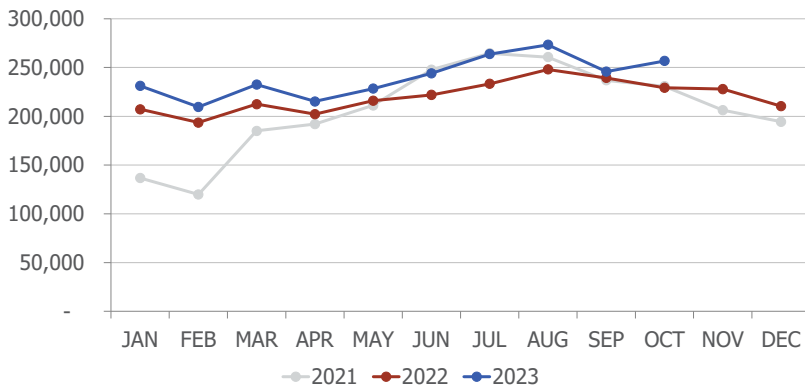
The red horizontal line on the left represents RNO's average enplaned load factor.

DEPARTURES



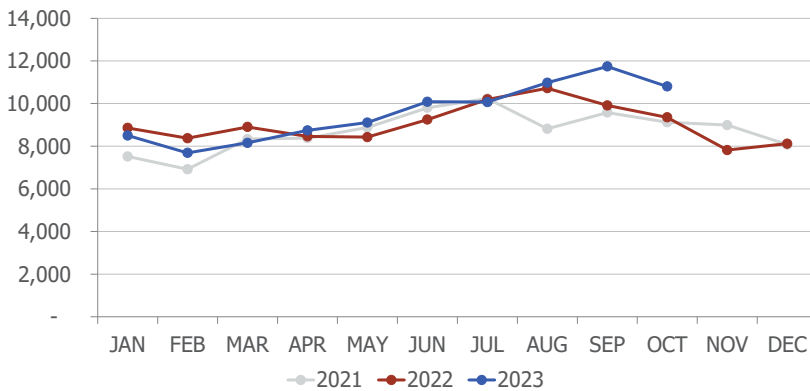
In October 2023, RNO handled 1,824 departures, an increase of 9.6% when compared to October 2022.

DEPARTING SEATS



In October 2023, RNO offered 256,777 departing seats, an increase of 12% when compared to October 2022.

TOTAL OPERATIONS



A total of 10,805 operations were handled at RNO in October 2023, an increase of 15.5% when compared to October 2022. Total operations include: Air Carrier, Air Taxi, General Aviation and Military operations as reported by the FAA.

wemoveyou



December 2023 RNO Flight Schedule

Destination	Airlines	Total Departures	Details
Austin	American	21	Mon, Thu, Fri, Sun & flights on 20, 26, 27
Burbank	Southwest	31	Daily
Chicago-O'Hare	United	8	Daily flight on 21-23, 26-30
Dallas-Love	Southwest	6	Daily flight on 21, 22, 26-29
Dallas/Fort Worth	American	93	Two to three daily flights. Four daily on 20-23, 26-30
Denver	Southwest	90	Three daily. Two flights on 2, 9, 16
	United	110	Three daily. Four daily on 14, 15, 17, 18, 20-31
Guadalajara	Volaris	21	Five weekly flights, Mon - Fri
Houston-Intercontinental	United	10	Daily flight on 21-23, 25-30
Las Vegas	Allegiant	8	Twice weekly. Thu Sun
	Southwest	316	11 daily. Six flights on Sat
	Spirit	55	Twice daily. Once on 5, 6, 9, 12, 13, 24, 31
Long Beach	Southwest	64	Twice daily. Three flights on 23, 30
Los Angeles	Delta	90	Three daily
	JetBlue	25	Daily. No flight on 2, 5, 6, 9, 12, 13
	Southwest	31	Daily
	United	60	Twice daily. Once on 24
New York-JFK	JetBlue	17	Daily 15-31
Oakland	Southwest	57	Twice daily. Once on Sat
Ontario	New Pacific	8	Twice weekly. Thu, Sun
Phoenix	American	111	Three to four daily flights. Five on 22
	Southwest	70	Twice daily. Three flights on 21-23, 26-30
Portland	Alaska	58	Twice daily. Once on 1, 5, 9, 12
Salt Lake City	Delta	94	Three daily. Twice on 24, 25, 31. Four on 26-30
San Diego	Southwest	67	Twice daily. Three on 21-23, 26-30
San Francisco	United	110	Four daily. Three on 21-23, 26-30, Twice on 24, 25, 31
San Jose	Southwest	31	Daily
Seattle	Alaska	85	Three daily. Twice on 2, 3, 5, 6, 9, 10, 12, 13

Multiple airlines

11.30.2023

wemoveyou



Total Passengers Oct-23						
	Passengers		% Diff.	Passengers		YOY % Diff.
	2021	2022		2023		
JAN	145,421	296,641	104.0%	344,268	16.1%	
FEB	162,071	310,738	91.7%	327,934	5.5%	
MAR	252,828	368,946	45.9%	380,363	3.1%	
1st QTR	560,320	976,325	74.2%	1,052,565	7.8%	
APR	247,220	326,787	32.2%	357,924	9.5%	
MAY	302,403	352,255	16.5%	368,930	4.7%	
JUN	397,906	384,429	-3.4%	409,467	6.5%	
2nd QTR	947,529	1,063,471	12.2%	1,136,321	6.9%	
JUL	438,168	407,867	-6.9%	442,942	8.6%	
AUG	369,686	409,942	10.9%	438,621	7.0%	
SEP	302,929	397,404	31.2%	408,732	2.9%	
3rd QTR	1,110,783	1,215,213	9.4%	1,290,295	6.2%	
OCT	350,631	385,466	9.9%	396,147	2.8%	
NOV	323,508	343,130	6.1%			
DEC	330,687	327,353	-1.0%			
4th QTR	1,004,826	1,055,949	5.1%			
TOTAL	3,623,458	4,310,958	19.0%			
YTD		3,640,475		3,875,328	6.5%	

Total Enplaned Passengers Oct-23				
Month	2021	2022	2023	% Diff.
JAN	72,887	147,773	171,374	16.0%
FEB	80,263	155,233	162,964	5.0%
MAR	126,359	185,671	193,748	4.4%
APR	125,009	163,973	177,665	8.4%
MAY	149,486	174,487	183,112	4.9%
JUN	197,261	191,234	203,452	6.4%
JUL	217,124	203,375	220,645	8.5%
AUG	188,207	199,365	214,616	7.6%
SEP	152,267	206,819	212,376	2.7%
OCT	177,407	193,074	197,692	2.4%
NOV	161,926	171,626		
DEC	164,561	162,680		
TOTAL	1,812,757	2,155,310		
YTD		1,821,004	1,937,644	6.4%

Total Deplaned Passengers				
Month	2021	2022	2023	% Diff.
JAN	72,534	148,868	172,894	16.1%
FEB	81,808	155,505	164,970	6.1%
MAR	126,469	183,275	186,615	1.8%
APR	122,211	162,814	180,259	10.7%
MAY	152,917	177,768	185,818	4.5%
JUN	200,645	193,195	206,015	6.6%
JUL	221,044	204,492	222,297	8.7%
AUG	181,479	210,577	224,005	6.4%
SEP	150,662	190,585	196,356	3.0%
OCT	173,224	192,392	198,455	3.2%
NOV	161,582	171,504		
DEC	166,126	164,673		
TOTAL	1,810,701	2,155,648		
YTD		1,819,471	1,937,684	6.5%

Total Cargo Volume in Pounds Oct-23						
	2021	2022	% Diff.	2023		YOY % Diff.
	Cargo in Pounds			Pounds	Metric Tons	
JAN	11,805,228	11,052,383	-6.4%	9,768,668	4,430	-11.6%
FEB	10,068,001	10,991,076	9.2%	8,963,956	4,065	-18.4%
MAR	13,204,912	12,265,793	-7.1%	11,124,124	5,045	-9.3%
1st QTR	35,078,141	34,309,252	-2.2%	29,856,748	13,540	-13.0%
APR	12,611,682	11,470,613	-9.0%	8,704,717	3,948	-24.1%
MAY	12,048,247	10,966,757	-9.0%	9,094,192	4,124	-17.1%
JUN	13,000,085	12,105,721	-6.9%	9,694,997	4,397	-19.9%
2nd QTR	37,660,014	34,543,091	-8.3%	27,493,906	12,469	-20.4%
JUL	12,722,035	11,289,066	-11.3%	8,508,207	3,859	-24.6%
AUG	11,636,003	11,751,228	1.0%	9,888,463	4,485	-15.9%
SEP	13,055,518	11,624,360	-11.0%	9,237,788	4,189	-20.5%
3rd QTR	37,413,556	34,664,654	-7.3%	27,634,458	12,533	-20.3%
OCT	12,660,541	10,502,407	-17.0%	8,731,063	3,960	-16.9%
NOV	12,089,489	11,569,577	-4.3%			
DEC	16,260,767	13,806,179	-15.1%			
4th QTR	41,010,797	35,878,163	-12.5%			
TOTAL	151,162,508	139,395,160	-7.8%			
YTD		114,019,404		93,716,175	42,502	-17.8%

Enplaned Passengers & Load Factor				
Airline	Enplaned PAX	Oct-23	Oct-22	Diff.
aha!	0	n/a	n/a	n/a
Alaska/Horizon	14,288	84.6%	87.9%	-3.3
Allegiant Air	1,079	76.9%	85.6%	-8.8
American	26,688	89.4%	88.8%	0.7
Delta	16,708	83.8%	94.5%	-10.8
Frontier	0	n/a	62.9%	n/a
JetBlue	3,378	67.3%	77.7%	-10.4
Southwest	84,737	70.9%	82.1%	-11.2
Spirit	12,360	75.1%	77.1%	-1.9
Sun Country	3,651	67.7%	51.3%	16.4
United	31,874	83.0%	89.7%	-6.6
Volaris	2,929	74.4%	68.8%	5.6

wemoveyou

