



Reno-Tahoe
Airport
Authority

Reno-Tahoe International Airport

Passengers and Cargo Statistics Report

December 2023

RNO OVERVIEW

December 2023 vs. December 2022

Total Passengers:	Up 9.0%
Avg. Enplaned Load Factor:	72.9%, down 4.4 pts.
Departures:	Up 15.2%
Departing Seats:	Up 14.7%
Cargo Volume:	Down 17.8%

2023 vs. 2022

Total Passengers:	Up 6.1%
Avg. Enplaned Load Factor:	79.5%, Down 2.1 pts.
Departures:	Up 2.2%
Departing Seats:	Up 8.9%
Cargo Volume:	Down 18.0%

Source: Airline Activity and Performance Reports;

SUMMARY

Reno-Tahoe International Airport (RNO) served 356,972 passengers in December 2023, an increase of 9.0% versus the same period last year.

In December 2023, RNO was served by 12 airlines to 22 non-stop destinations. The total seat capacity increased 14.7% and flights increased 15.2% when compared to December 2022.

In 2023, RNO served 4,573,384 passengers, an increase of 6.1% versus 2022, and an increase of 2.8% versus 2019.

RNO handled 11,347,689 pounds of air cargo in December 2023, a decrease of 17.8% when compared to December 2022.

In 2023, RNO handled 114,337,660 pounds of air cargo, a decrease of 18% when compared to 2022.

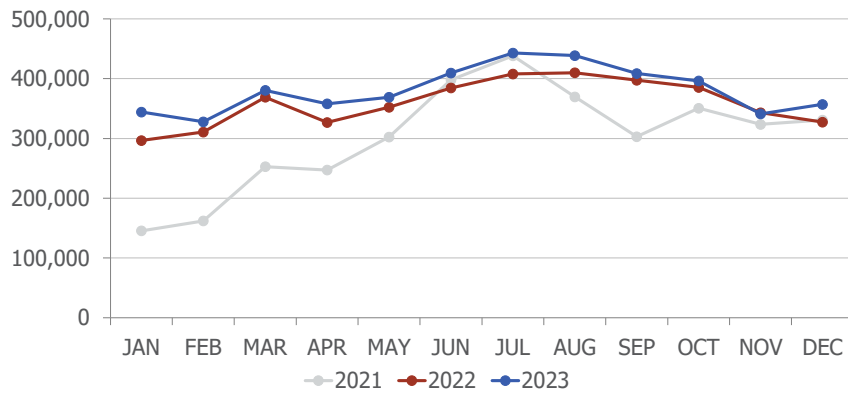
JSX Public Charters

JSX offers non-stop flights from RNO to Orange County and Burbank using a 30-seat Embraer 135/145 aircraft. JSX operates out of Stellar Aviation, a private Fixed Base Operator, located at 485 South Rock Blvd.

wemoveyou

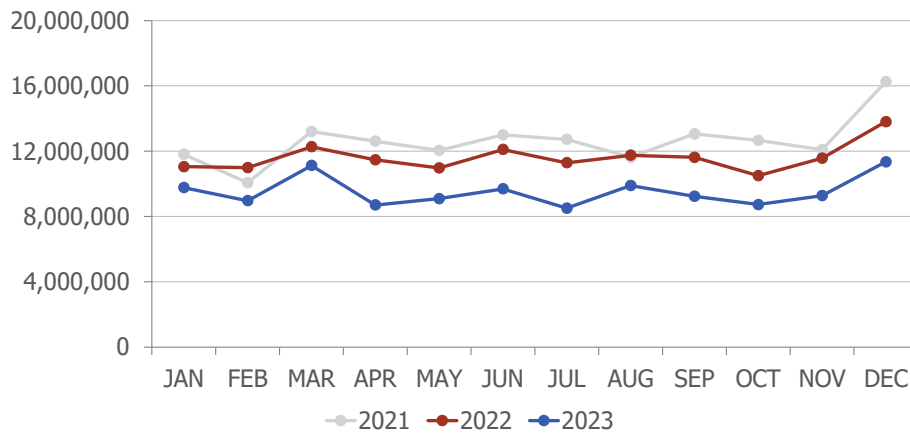


Passengers



Total Passengers			
	Dec-23	Dec-22	Difference
Alaska/Horizon	22,445	21,500	4.4%
Allegiant Air	1,777	2,216	-19.8%
American	50,973	55,042	-7.4%
Delta	29,518	30,268	-2.5%
Frontier	0	5,619	
JetBlue	8,696	7,489	16.1%
New Pacific	564	0	
Southwest	158,011	133,285	18.6%
Spirit	16,967	15,262	11.2%
Sun Country	1,945	1,901	2.3%
United	60,171	48,910	23.0%
Volaris	5,905	5,861	0.8%

Cargo

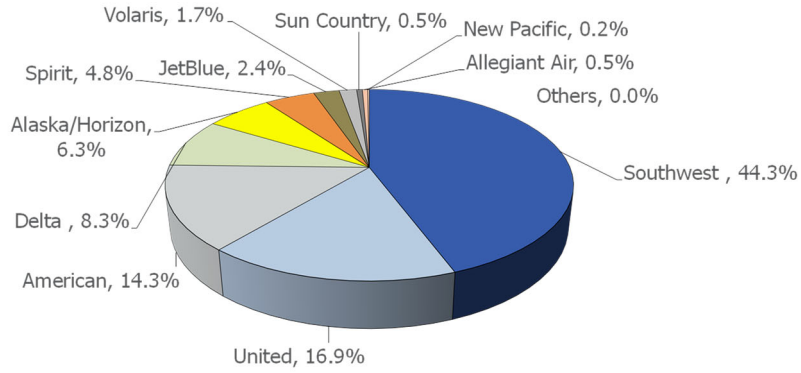


In December 2023, DHL cargo volume was down 31.2%, FedEx was down 12.5% and UPS was down 23.5% when compared to December 2022.

wemoveyou

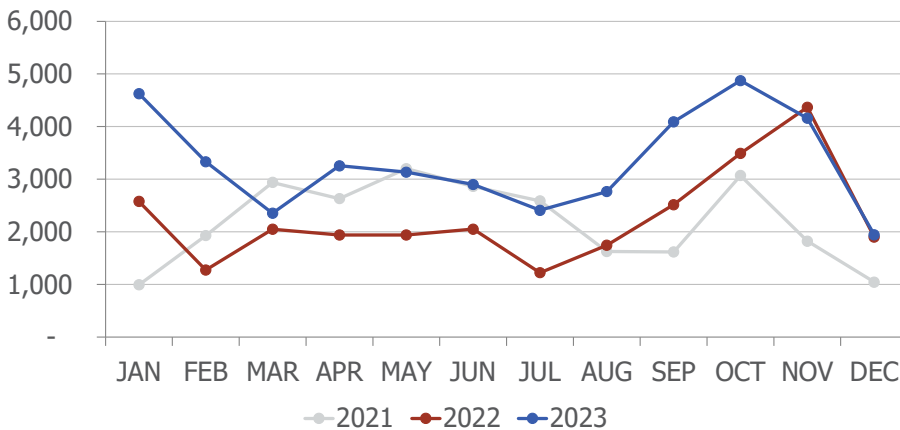


AIRLINE MARKET SHARE (passengers)



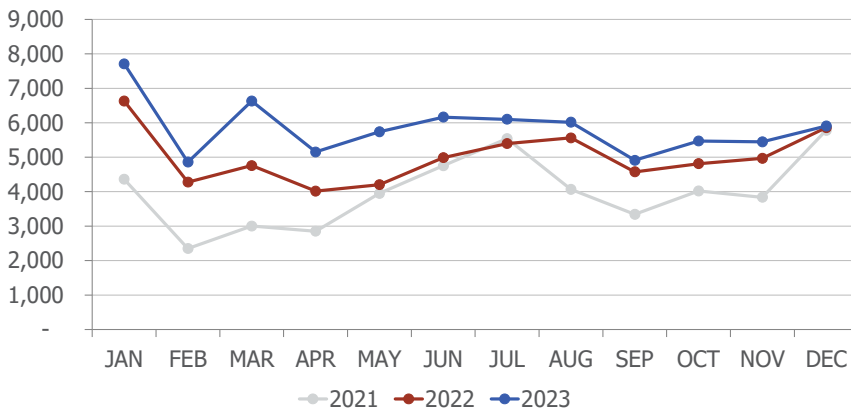
Airline Market Share			
	Dec-23	Dec-22	YOY Change
Alaska/Horizon	6.3%	6.6%	(0.3)
Allegiant Air	0.5%	0.7%	(0.2)
American	14.3%	16.8%	(2.5)
Delta	8.3%	9.2%	(1.0)
Frontier	n/a	1.7%	n/a
JetBlue	2.4%	2.3%	0.1
Southwest	44.3%	40.7%	3.5
Spirit	4.8%	4.7%	0.1
Sun Country	0.5%	0.6%	(0.0)
United	16.9%	14.9%	1.9
Volaris	1.7%	1.8%	(0.1)
New Pacific	0.2%	n/a	n/a
Others	0.0%	0.0%	0.0

TOTAL CHARTER PASSENGERS



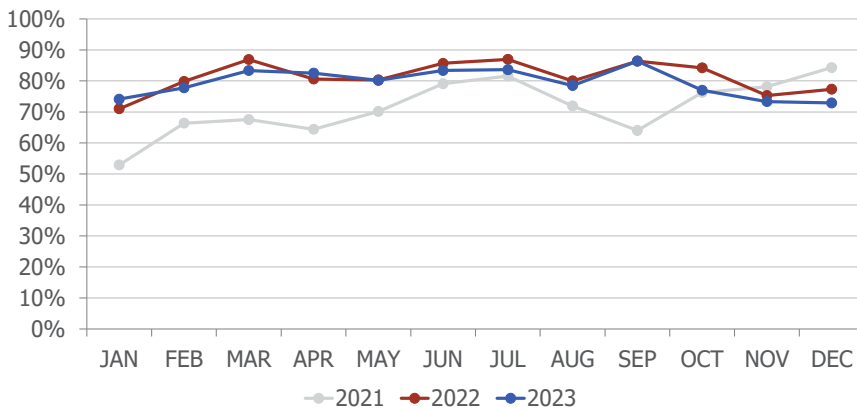
In December 2023, RNO served 1,945 passengers on charter flights, an increase of 2.3% when compared to December 2022.

TOTAL INTERNATIONAL PASSENGERS



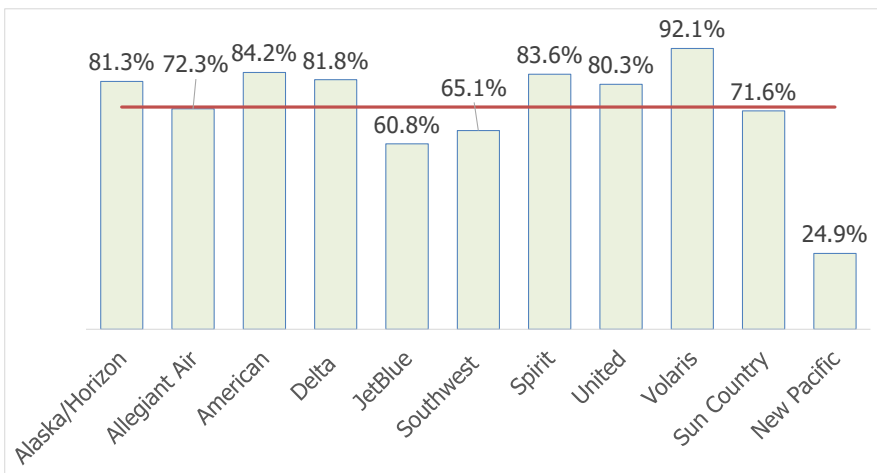
In December 2023, RNO served 5,905 international passengers, an increase of 0.8% when compared to December 2022.

AVERAGE ENPLANED LOAD FACTOR



In December 2023, RNO's average enplaned load factor was 72.9%, down 4.4 pts. when compared to December 2022.

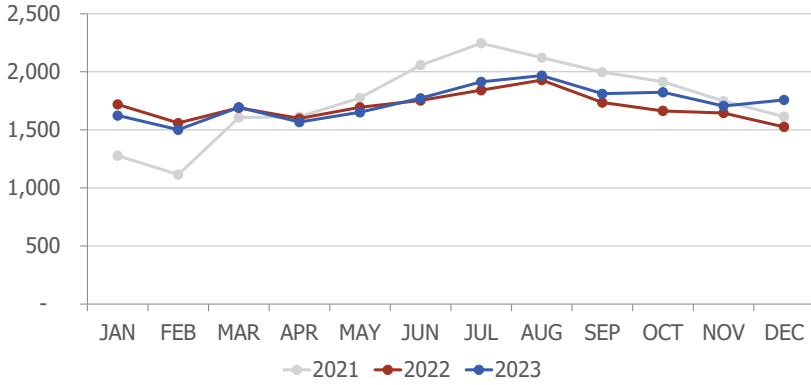
Sun Country's load factor includes commercial and charter flights.



The red horizontal line on the left represents RNO's average enplaned load factor.

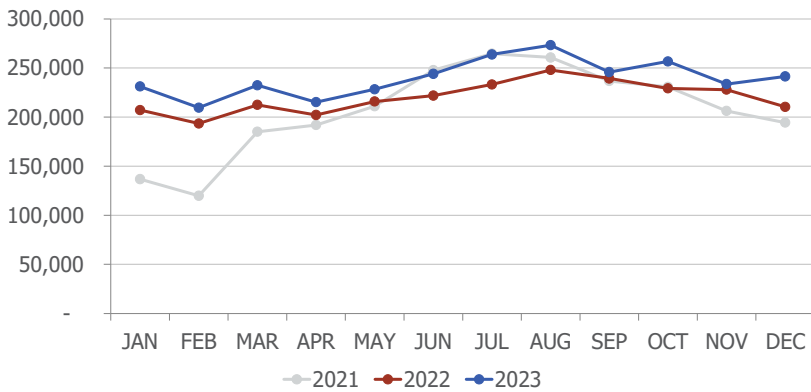
DEPARTURES

In December 2023, RNO handled 1,758 departures, an increase of 15.2% when compared to December 2022.



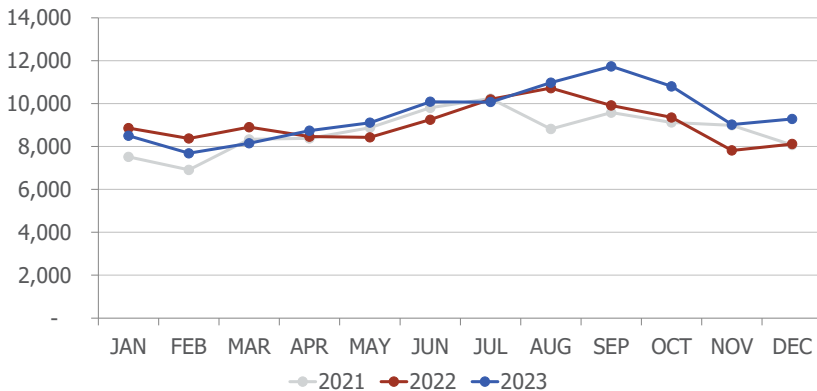
DEPARTING SEATS

In December 2023, RNO offered 241,466 departing seats, an increase of 14.7% when compared to December 2022.



TOTAL OPERATIONS

A total of 9,283 operations were handled at RNO in December 2023, an increase of 14.3% when compared to December 2022. Total operations include: Air Carrier, Air Taxi, General Aviation and Military operations as reported by the FAA.



wemoveyou



February 2024 RNO Flight Schedule

Destination	Airlines	Total Departures	Details
Burbank	Southwest	29	Daily
Chicago-O'Hare	United	4	One flight on 17, 18, 24, 25
Dallas-Love	Southwest	4	One flight on Sundays
Dallas/Fort Worth	American	96	Three to four daily flights
Denver	Southwest	87	Three daily
	United	87	Three daily
Guadalajara	Volaris	21	Five weekly flights, Mon - Fri
Las Vegas	Southwest	237	Eight to nine daily flights
	Spirit	58	Twice daily
Long Beach	Southwest	58	Twice daily
Los Angeles	Delta	87	Three daily
	JetBlue	25	Daily. No flight on 6, 7, 13, 14
	Southwest	33	Daily. Twice on Sun
	United	52	Twice daily. One to two flights on weekends
New York-JFK	JetBlue	15	Daily 15-29
Oakland	Southwest	50	Twice daily. Once on weekends
Ontario	New Pacific	9	Twice weekly. Thu, Sun
Phoenix	American	125	Three to five daily flights
	Southwest	58	Twice daily
Portland	Alaska	38	One to two daily flights
Salt Lake City	Delta	87	Three daily
San Diego	Southwest	62	Twice daily. Three on Sun
San Francisco	United	115	Four daily
San Jose	Southwest	29	Daily
Seattle	Alaska	75	Two to three daily
	Multiple airlines		

1.23.2024

wemoveyou



Total Passengers						
Dec-23						
	Passengers		% Diff.	Passengers		YOY % Diff.
	2021	2022		2023		
JAN	145,421	296,641	104.0%	344,268	16.1%	
FEB	162,071	310,738	91.7%	327,934	5.5%	
MAR	252,828	368,946	45.9%	380,363	3.1%	
1st QTR	560,320	976,325	74.2%	1,052,565	7.8%	
APR	247,220	326,787	32.2%	357,924	9.5%	
MAY	302,403	352,255	16.5%	368,930	4.7%	
JUN	397,906	384,429	-3.4%	409,467	6.5%	
2nd QTR	947,529	1,063,471	12.2%	1,136,321	6.9%	
JUL	438,168	407,867	-6.9%	442,942	8.6%	
AUG	369,686	409,942	10.9%	438,621	7.0%	
SEP	302,929	397,404	31.2%	408,732	2.9%	
3rd QTR	1,110,783	1,215,213	9.4%	1,290,295	6.2%	
OCT	350,631	385,466	9.9%	396,147	2.8%	
NOV	323,508	343,130	6.1%	341,084	-0.6%	
DEC	330,687	327,353	-1.0%	356,972	9.0%	
4th QTR	1,004,826	1,055,949	5.1%	1,094,203	3.6%	
TOTAL	3,623,458	4,310,958	19.0%	4,573,384	6.1%	

Total Enplaned Passengers				
Dec-23				
Month	2021	2022	2023	% Diff.
JAN	72,887	147,773	171,374	16.0%
FEB	80,263	155,233	162,964	5.0%
MAR	126,359	185,671	193,748	4.4%
APR	125,009	163,973	177,665	8.4%
MAY	149,486	174,487	183,112	4.9%
JUN	197,261	191,234	203,452	6.4%
JUL	217,124	203,375	220,645	8.5%
AUG	188,207	199,365	214,616	7.6%
SEP	152,267	206,819	212,376	2.7%
OCT	177,407	193,074	197,692	2.4%
NOV	161,926	171,626	171,361	-0.2%
DEC	164,561	162,680	176,035	8.2%
TOTAL	1,812,757	2,155,310	2,285,040	6.0%

Total Deplaned Passengers				
Month	2021	2022	2023	% Diff.
JAN	72,534	148,868	172,894	16.1%
FEB	81,808	155,505	164,970	6.1%
MAR	126,469	183,275	186,615	1.8%
APR	122,211	162,814	180,259	10.7%
MAY	152,917	177,768	185,818	4.5%
JUN	200,645	193,195	206,015	6.6%
JUL	221,044	204,492	222,297	8.7%
AUG	181,479	210,577	224,005	6.4%
SEP	150,662	190,585	196,356	3.0%
OCT	173,224	192,392	198,455	3.2%
NOV	161,582	171,504	169,723	-1.0%
DEC	166,126	164,673	180,937	9.9%
TOTAL	1,810,701	2,155,648	2,288,344	6.2%

Total Cargo Volume in Pounds						
Dec-23						
	2021	2022	% Diff.	2023		YOY % Diff.
	Cargo in Pounds			Pounds	Metric Tons	
JAN	11,805,228	11,052,383	-6.4%	9,768,668	4,430	-11.6%
FEB	10,068,001	10,991,076	9.2%	8,963,956	4,065	-18.4%
MAR	13,204,912	12,265,793	-7.1%	11,124,124	5,045	-9.3%
1st QTR	35,078,141	34,309,252	-2.2%	29,856,748	13,540	-13.0%
APR	12,611,682	11,470,613	-9.0%	8,704,717	3,948	-24.1%
MAY	12,048,247	10,966,757	-9.0%	9,094,192	4,124	-17.1%
JUN	13,000,085	12,105,721	-6.9%	9,694,997	4,397	-19.9%
2nd QTR	37,660,014	34,543,091	-8.3%	27,493,906	12,469	-20.4%
JUL	12,722,035	11,289,066	-11.3%	8,508,207	3,859	-24.6%
AUG	11,636,003	11,751,228	1.0%	9,888,463	4,485	-15.9%
SEP	13,055,518	11,624,360	-11.0%	9,237,788	4,189	-20.5%
3rd QTR	37,413,556	34,664,654	-7.3%	27,634,458	12,533	-20.3%
OCT	12,660,541	10,502,407	-17.0%	8,731,063	3,960	-16.9%
NOV	12,089,489	11,569,577	-4.3%	9,273,796	4,206	-19.8%
DEC	16,260,767	13,806,179	-15.1%	11,347,689	5,146	-17.8%
4th QTR	41,010,797	35,878,163	-12.5%	29,352,548	13,312	-18.2%
TOTAL	151,162,508	139,395,160	-7.8%	114,337,660	51,854	-18.0%

Enplaned Passengers & Load Factor				
Airline	Enplaned PAX	Dec-23	Dec-22	Diff.
Alaska/Horizon	10,944	81.3%	76.6%	4.7
Allegiant Air	902	72.3%	72.6%	-0.3
American	25,267	84.2%	86.5%	-2.2
Delta	14,677	81.8%	91.0%	-9.1
Frontier	0	n/a	78.1%	n/a
JetBlue	4,138	60.8%	79.7%	-18.9
New Pacific	270	24.9%	n/a	n/a
Southwest	77,655	65.1%	70.8%	-5.7
Spirit	8,484	83.6%	73.3%	10.3
Sun Country	1,066	71.6%	87.6%	-15.9
United	29,170	80.3%	79.9%	0.4
Volaris	3,462	92.1%	85.2%	6.9

wemoveyou

