



Reno-Tahoe International Airport

Passengers and Cargo Statistics Report

January 2024



RNO OVERVIEW

January 2024 vs. January 2023

Total Passengers:	Up 0.7%
Avg. Enplaned Load Factor:	74.4%, up 0.3 pts.
Departures:	Up 0.9%
Departing Seats:	Up 0.5%
Cargo Volume:	Down 10.2%

SUMMARY

Reno-Tahoe International Airport (RNO) served 346,845 passengers in January 2024, an increase of 0.7% versus the same period last year. In January 2024, RNO was served by 12 airlines to 22 non-stop destinations. The total seat capacity increased 0.5% and flights increased 0.9% when compared to January 2023.

RNO handled 8,769,205 pounds of air cargo in January 2024, a decrease of 10.2% when compared to January 2023.

Schedule Highlights

Airlines continue to increase seat capacity at RNO, with an increase of 12% this summer when compared to the summer 2023 schedule.

Chicago

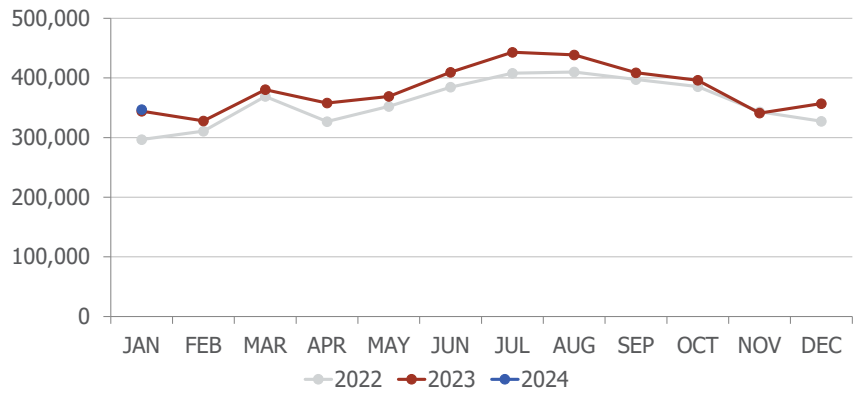
1. United Airlines upgraded the non-stop flights between RNO and Chicago O' Hare to a daily service on March 9.
2. Southwest Airlines will return the non-stop seasonal flights between RNO and Chicago Midway on June 4.
3. American Airlines will begin new non-stop seasonal flights between RNO and Chicago O'Hare on June 5.

Delta Air Lines will begin new non-stop flights between RNO and Atlanta on June 7.

wemoveyou

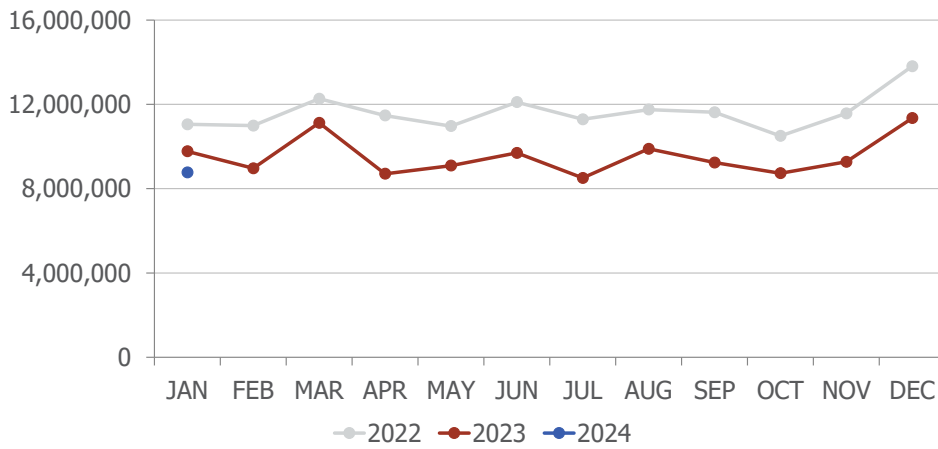


Passengers



Total Passengers			
	Jan-24	Jan-23	Difference
Alaska/Horizon	19,968	21,109	-5.4%
Allegiant Air	502	1,630	-69.2%
American	53,444	53,945	-0.9%
Delta	31,819	32,230	-1.3%
Frontier	0	3,511	
JetBlue	4,658	6,869	-32.2%
New Pacific	929	0	
Southwest	151,639	146,326	3.6%
Spirit	15,325	14,723	4.1%
Sun Country	3,072	3,356	-8.5%
United	58,065	53,065	9.4%
Volaris	7,424	7,001	6.0%

Cargo

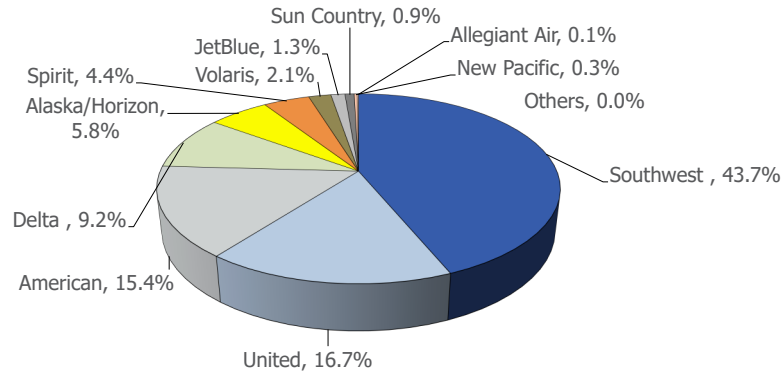


In January 2024, DHL cargo volume was down 14.7%, FedEx was down 7.6% and UPS was down 13.0% when compared to January 2023.

wemoveyou

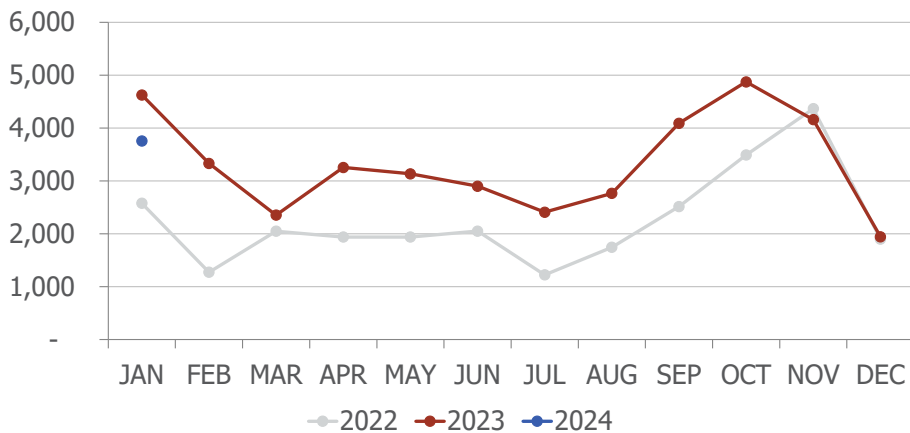


AIRLINE MARKET SHARE (passengers)



Airline Market Share			
	Jan-24	Jan-23	YOY Change
Alaska/Horizon	5.8%	6.1%	(0.4)
Allegiant Air	0.1%	0.5%	(0.3)
American	15.4%	15.7%	(0.3)
Delta	9.2%	9.4%	(0.2)
Frontier	n/a	1.0%	n/a
JetBlue	1.3%	2.0%	(0.7)
Southwest	43.7%	42.5%	1.2
Spirit	4.4%	4.3%	0.1
Sun Country	0.9%	1.0%	(0.1)
United	16.7%	15.4%	1.3
Volaris	2.1%	2.0%	0.1
New Pacific	0.3%	n/a	n/a
Others	0.0%	0.1%	(0.1)

TOTAL CHARTER PASSENGERS



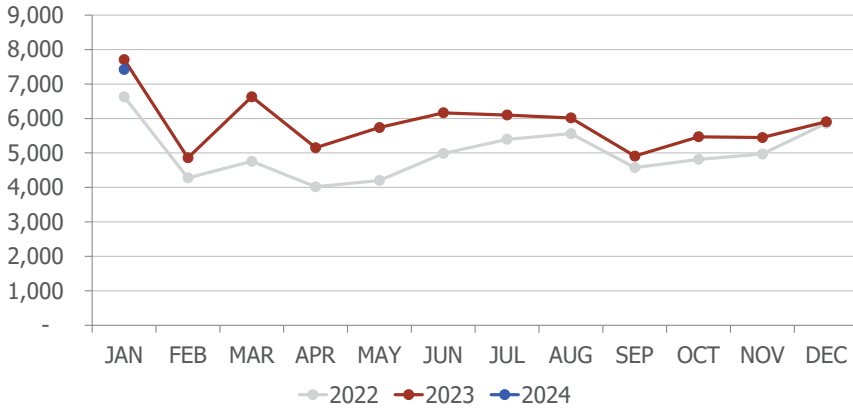
In January 2024, RNO served 3,755 passengers on charter flights, a decrease of 18.8% when compared to January 2023.

Sun Country Airlines provided charter flights at RNO in January 2024.

wemoveyou

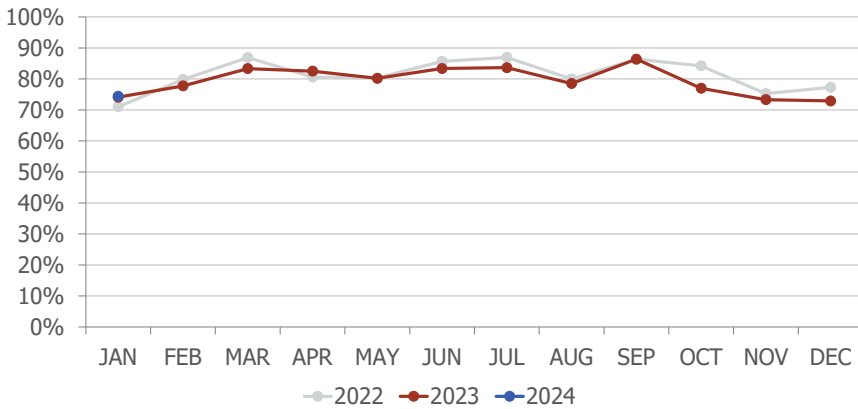


TOTAL INTERNATIONAL PASSENGERS



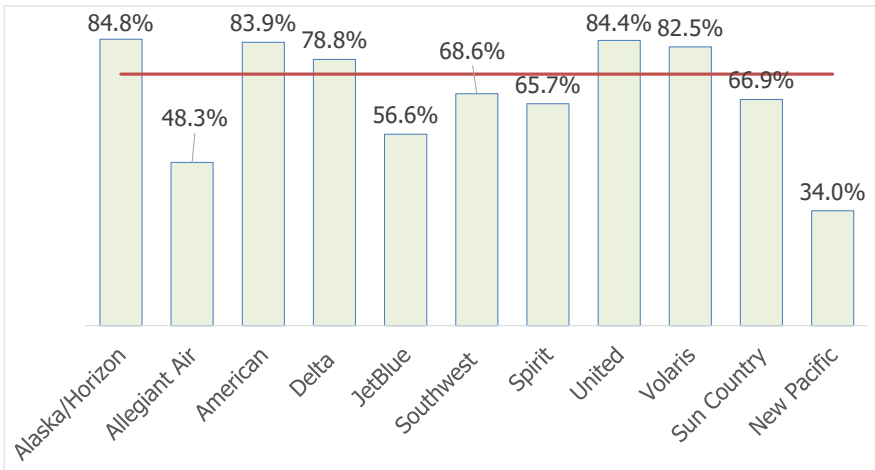
In January 2024, RNO served 8,107 international passengers, an increase of 5.2% when compared to January 2023.

AVERAGE ENPLANED LOAD FACTOR



In January 2024, RNO's average enplaned load factor was 74.4%, up 0.3 pts. when compared to January 2023.

Sun Country's load factor includes only charter flights.

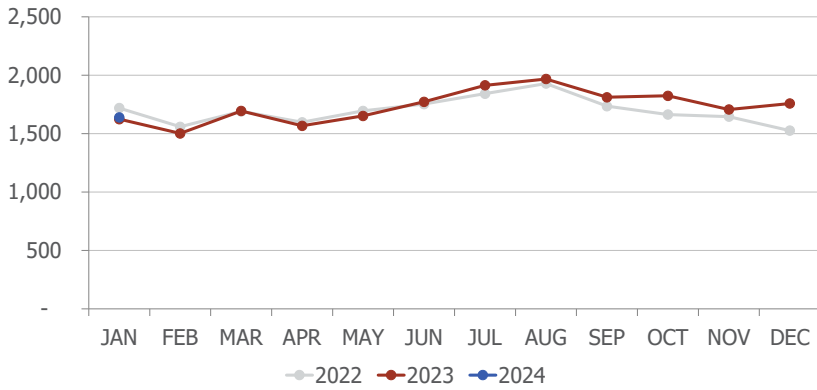


The red horizontal line on the left represents RNO's average enplaned load factor.

wemoveyou

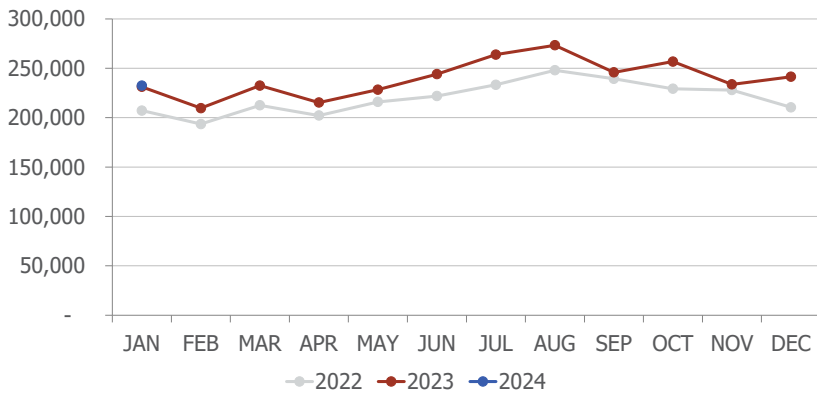


DEPARTURES



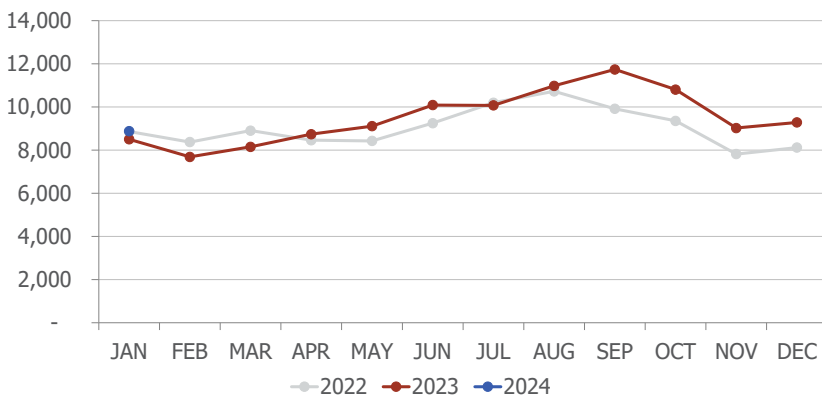
In January 2024, RNO handled 1,639 departures, an increase of 0.9% when compared to January 2023.

DEPARTING SEATS



In January 2024, RNO offered 232,453 departing seats, an increase of 0.5% when compared to January 2023.

TOTAL OPERATIONS



A total of 8,879 operations were handled at RNO in January 2024, an increase of 4.4% when compared to January 2023. Total operations include: Air Carrier, Air Taxi, General Aviation and Military operations as reported by the FAA.

wemoveyou



March 2024 RNO Flight Schedule

Destination	Airlines	Total Departures	Details
Burbank	Southwest	16	Daily 1-6, then Tue, Wed, Sat
Chicago-O'Hare	United	27	Flights on 2,3. Daily 7-31. No flights on Mon
Dallas-Love	Southwest	9	Twice weekly. Sat, Sun
Dallas/Fort Worth	American	116	Four daily. Three on Tue, Wed
Denver	Southwest	85	Three daily. Twice on Sat, Sun
	United	111	Three to four daily
Guadalajara	Volaris	21	Five weekly flights, Mon - Fri
Houston-Intercontinental	United	7	Twice weekly from Mar 9. Sat, Sun
Las Vegas	Southwest	295	11 daily Mon-Fri. 6-9 on weekends
	Spirit	88	Three daily. Twice daily 1-5
Long Beach	Southwest	66	Twice daily. Three on Sun
Los Angeles	Delta	93	Three daily
	JetBlue	31	Daily
	Southwest	32	Daily
	Sun Country	2	Daily 8 and 16
	United	53	Twice daily. Once on weekends
Minneapolis/St. Paul	Sun Country	1	Once on Mar 1
New York-JFK	JetBlue	31	Daily
Oakland	Southwest	52	Twice daily. Once on weekends
Ontario	New Pacific	9	Twice weekly. Thu, Sun
Phoenix	American	130	Four daily. Five daily 1-4 and Sun
	Southwest	68	Twice daily. Three on Tue, Wed
Portland	Alaska	56	Twice daily. Once on 2,5,6,9,12,13
Salt Lake City	Delta	93	Three daily
San Diego	Southwest	84	Three daily. Twice on Sat and 1,4,5,6
San Francisco	United	125	Four daily
San Jose	Southwest	31	Daily
Seattle	Alaska	101	Two to four daily
	Multiple airlines		

3.1.2024

wemoveyou



Total Passengers Jan-24						
	Passengers		% Diff.	Passengers		YOY % Diff.
	2022	2023		2024		
JAN	296,641	344,268	16.1%	346,845		0.7%
FEB	310,738	327,934	5.5%			
MAR	368,946	380,363	3.1%			
1st QTR	976,325	1,052,565	7.8%			
APR	326,787	357,924	9.5%			
MAY	352,255	368,930	4.7%			
JUN	384,429	409,467	6.5%			
2nd QTR	1,063,471	1,136,321	6.9%	0		
JUL	407,867	442,942	8.6%			
AUG	409,942	438,621	7.0%			
SEP	397,404	408,732	2.9%			
3rd QTR	1,215,213	1,290,295	6.2%	0		
OCT	385,466	396,147	2.8%			
NOV	343,130	341,084	-0.6%			
DEC	327,353	356,972	9.0%			
4th QTR	1,055,949	1,094,203	3.6%	0		
TOTAL	4,310,958	4,573,384	6.1%			

Total Enplaned Passengers Jan-24				
Month	2022	2023	2024	% Diff.
JAN	147,773	171,374	172,968	0.9%
FEB	155,233	162,964		
MAR	185,671	193,748		
APR	163,973	177,665		
MAY	174,487	183,112		
JUN	191,234	203,452		
JUL	203,375	220,645		
AUG	199,365	214,616		
SEP	206,819	212,376		
OCT	193,074	197,692		
NOV	171,626	171,361		
DEC	162,680	176,035		
TOTAL	2,155,310	2,285,040		

Total Deplaned Passengers				
Month	2022	2023	2024	% Diff.
JAN	148,868	172,894	173,877	0.6%
FEB	155,505	164,970		
MAR	183,275	186,615		
APR	162,814	180,259		
MAY	177,768	185,818		
JUN	193,195	206,015		
JUL	204,492	222,297		
AUG	210,577	224,005		
SEP	190,585	196,356		
OCT	192,392	198,455		
NOV	171,504	169,723		
DEC	164,673	180,937		
TOTAL	2,155,648	2,288,344		

Total Cargo Volume in Pounds Jan-24						
	2022	2023	% Diff.	2024		YOY % Diff.
	Cargo in Pounds			Pounds	Metric Tons	
JAN	11,052,383	9,768,668	-11.6%	8,769,205	3,977	-10.2%
FEB	10,991,076	8,963,956	-18.4%			
MAR	12,265,793	11,124,124	-9.3%			
1st QTR	34,309,252	29,856,748	-13.0%			
APR	11,470,613	8,704,717	-24.1%			
MAY	10,966,757	9,094,192	-17.1%			
JUN	12,105,721	9,694,997	-19.9%			
2nd QTR	34,543,091	27,493,906	-20.4%	0		
JUL	11,289,066	8,508,207	-24.6%			
AUG	11,751,228	9,888,463	-15.9%			
SEP	11,624,360	9,237,788	-20.5%			
3rd QTR	34,664,654	27,634,458	-20.3%	0		
OCT	10,502,407	8,731,063	-16.9%			
NOV	11,569,577	9,273,796	-19.8%			
DEC	13,806,179	11,347,689	-17.8%			
4th QTR	35,878,163	29,352,548	-18.2%	0		
TOTAL	139,395,160	114,337,660	-18.0%			

Enplaned Passengers & Load Factor				
Airline	Enplaned PAX	Jan-24	Jan-23	Diff.
Alaska/Horizon	9,862	84.8%	77.0%	7.8
Allegiant Air	226	48.3%	50.6%	-2.4
American	27,252	83.9%	78.3%	5.6
Delta	15,494	78.8%	81.7%	-2.9
Frontier	0	n/a	64.6%	n/a
JetBlue	2,385	56.6%	61.6%	-5.0
New Pacific	492	34.0%	n/a	n/a
Southwest	75,623	68.6%	70.0%	-1.4
Spirit	7,322	65.7%	67.3%	-1.6
Sun Country	1,369	66.9%	76.9%	-10.0
United	29,548	84.4%	82.1%	2.3
Volaris	3,395	82.5%	82.2%	0.3

wemoveyou

