



# Reno-Tahoe International Airport

## Passengers and Cargo Statistics Report

### February 2024



## RNO OVERVIEW

### February 2024 vs. February 2023

Total Passengers:	Up 8.0%
Avg. Enplaned Load Factor:	80.8%, up 3.0 pts.
Departures:	Up 3.4%
Departing Seats:	Up 4.9%
Cargo Volume:	Down 0.8%

## SUMMARY

Reno-Tahoe International Airport (RNO) served 354,252 passengers in February 2024, an increase of 8.0% versus the same period last year. In February 2024, RNO was served by 11 airlines to 20 non-stop destinations. The total seat capacity increased 4.9% and flights increased 3.4% when compared to February 2023.

RNO handled 8,896,368 pounds of air cargo in February 2024, a decrease of 0.8% when compared to February 2023.

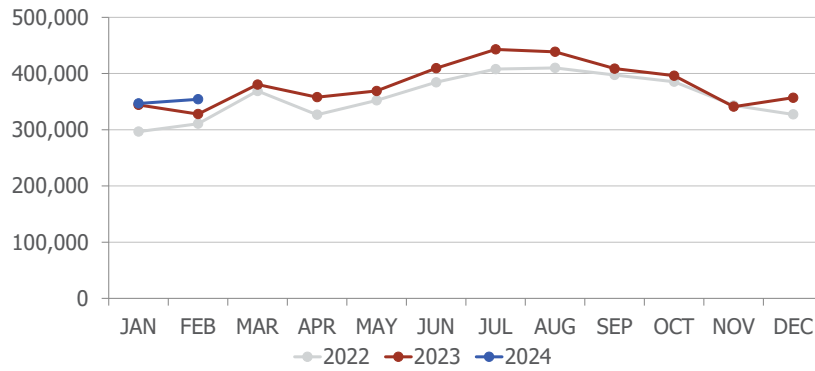
## Schedule Highlights

- United Airlines upgraded the non-stop flights between RNO and Chicago O' Hare to a daily service on March 9.
- The non-stop seasonal flights between RNO and Chicago Midway on Southwest Airlines will return on June 4.
- American Airlines will begin new non-stop seasonal flights between RNO and Chicago O'Hare on June 5.
- Delta Air Lines will begin new non-stop flights between RNO and Atlanta on June 7.

wemoveyou

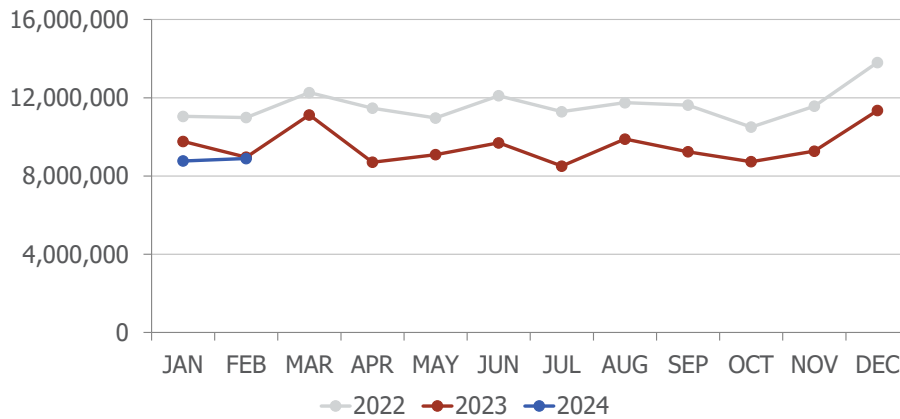


## Passengers



Total Passengers			
	Feb-24	Feb-23	Difference
Alaska/Horizon	19,998	15,197	31.6%
Allegiant Air	0	1,668	
American	58,975	52,404	12.5%
Delta	29,978	29,974	0.0%
Frontier	0	1,571	
JetBlue	9,114	8,375	8.8%
New Pacific	1,404	0	
Southwest	155,550	143,561	8.4%
Spirit	16,312	14,765	10.5%
Sun Country	3,185	2,958	7.7%
United	53,999	52,603	2.7%
Volaris	5,737	4,858	18.1%

## Cargo

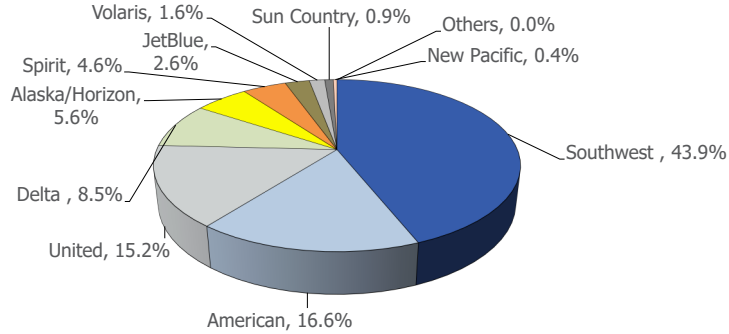


In February 2024, DHL cargo volume was down 21.8% and UPS was down 15.9% when compared to February 2023. FedEx cargo volume was up 11.6% for the same period.

wemoveyou

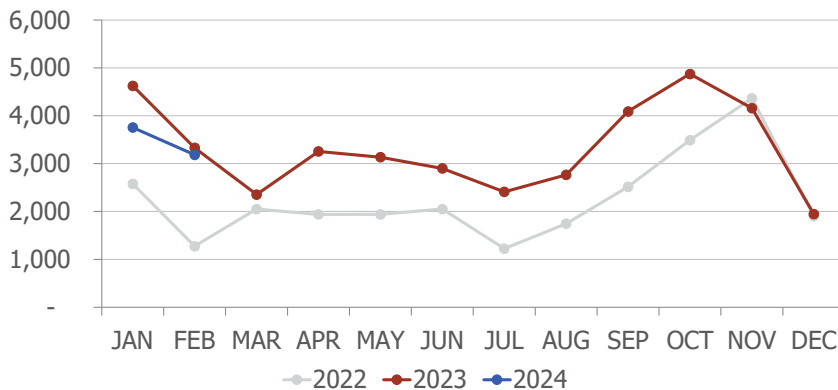


## AIRLINE MARKET SHARE (passengers)



Airline Market Share			
	Feb-24	Feb-23	YOY Change
Alaska/Horizon	5.6%	4.6%	1.0
Allegiant Air	n/a	0.5%	n/a
American	16.6%	16.0%	0.7
Delta	8.5%	9.1%	(0.7)
Frontier	n/a	0.5%	n/a
JetBlue	2.6%	2.6%	0.0
Southwest	43.9%	43.8%	0.1
Spirit	4.6%	4.5%	0.1
Sun Country	0.9%	0.9%	(0.0)
United	15.2%	16.0%	(0.8)
Volaris	1.6%	1.5%	0.1
New Pacific	0.4%	n/a	n/a
Others	0.0%	0.0%	0.0

## TOTAL CHARTER PASSENGERS

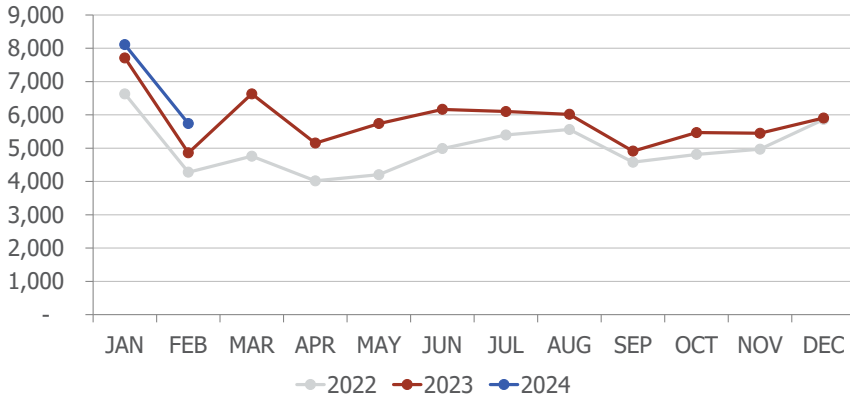


In February 2024, RNO served 3,185 passengers on charter flights, a decrease of 4.4% when compared to February 2023.

Sun Country Airlines provided charter flights at RNO in February 2024.

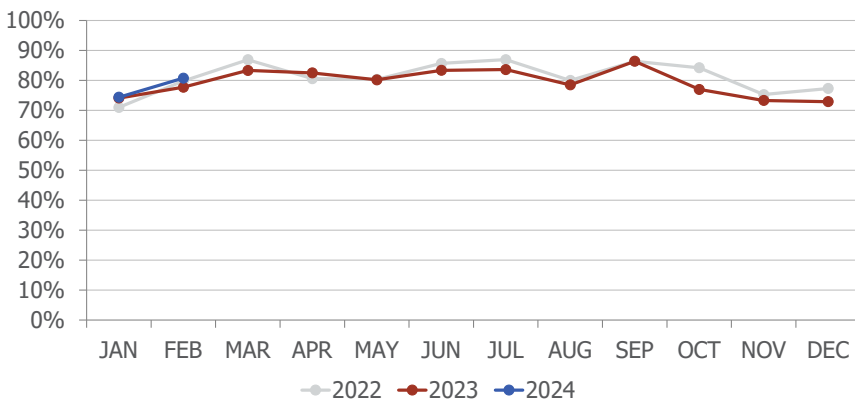
JSX provided public charters from one of the RTAA fixed based operators. JSX passenger numbers are not included above.

## TOTAL INTERNATIONAL PASSENGERS

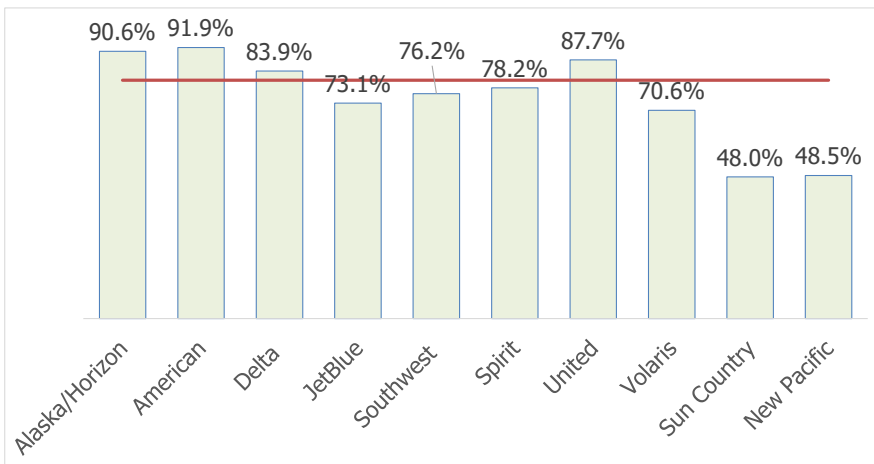


In February 2024, RNO served 5,737 international passengers, an increase of 18.1% when compared to February 2023.

## AVERAGE ENPLANED LOAD FACTOR



In February 2024, RNO's average enplaned load factor was 80.8%, up 3.0 pts. when compared to February 2023.

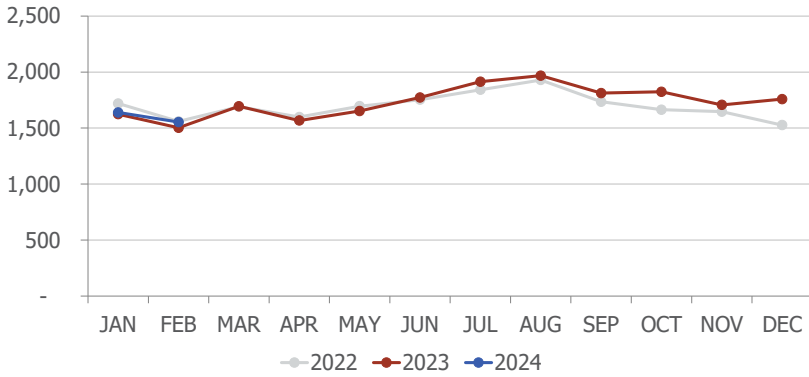


The red horizontal line on the left represents RNO's average enplaned load factor.

Sun Country's load factor includes only charter flights.

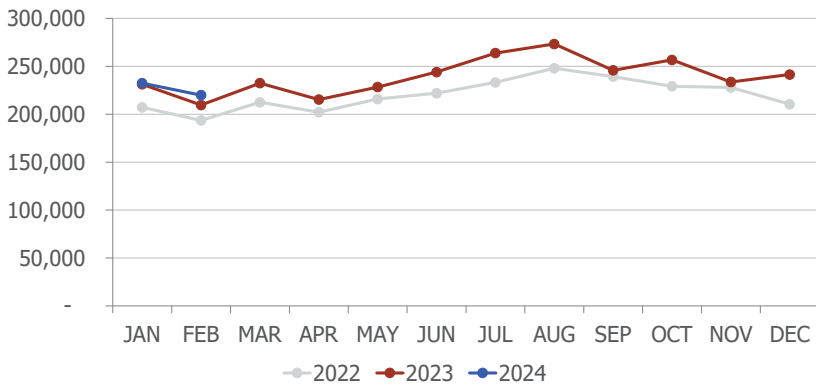
## DEPARTURES

In February 2024, RNO handled 1,553 departures, an increase of 3.4% when compared to February 2023.



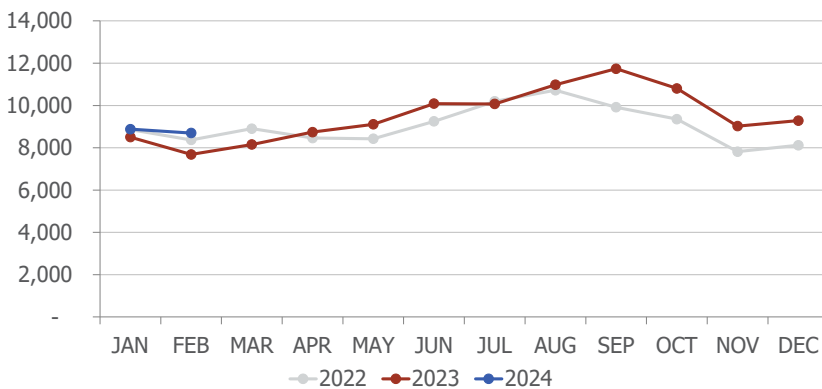
## DEPARTING SEATS

In February 2024, RNO offered 219,943 departing seats, an increase of 4.9% when compared to February 2023.



## TOTAL OPERATIONS

A total of 8,699 operations were handled at RNO in February 2024, an increase of 13.2% when compared to February 2023. Total operations include: Air Carrier, Air Taxi, General Aviation and Military operations as reported by the FAA.



## April 2024 RNO Flight Schedule

Destination	Airlines	Total Departures	Details
<b>Burbank</b>	Southwest	25	Daily, No flight on 1,4,5,7,8
<b>Chicago-O'Hare</b>	United	29	Daily, No flight on Apr 1
<b>Dallas-Love</b>	Southwest	2	Daily on Apr 6,7
<b>Dallas/Fort Worth</b>	American	106	Four daily. Three on Tue, Wed, Sat
<b>Denver</b>	Southwest	88	Three daily. Twice on 6,7
	United	90	Three daily
<b>Guadalajara</b>	Volaris	22	Five weekly flights, Mon - Fri
<b>Las Vegas</b>	Southwest	283	10 to 11 daily on weekdays. 6 to 8 on weekends
	Spirit	90	Three daily
<b>Long Beach</b>	Southwest	55	Twice daily. Once on 13,14,20,21,27,28
<b>Los Angeles</b>	Delta	90	Three daily
	JetBlue	30	Daily
	Southwest	33	Daily
	United	60	Twice daily
<b>Oakland</b>	Southwest	52	Twice daily. Once on weekends
<b>Ontario</b>	New	8	Twice weekly. Thu, Sun
<b>Phoenix</b>	American	147	Five daily. Four daily on 1,2,3
	Southwest	62	Twice daily.
<b>Portland</b>	Alaska	74	Twice daily 1-16. Three daily 17-30
<b>Salt Lake City</b>	Delta	90	Three daily
<b>San Diego</b>	Southwest	61	Twice daily. Once on Tue, Wed. Three daily 1-8.
<b>San Francisco</b>	United	120	Four daily
<b>San Jose</b>	Southwest	27	Daily. No flight on 14,21,28
<b>Seattle</b>	Alaska	111	Four daily. Three on Tue, Wed
	Multiple airlines		

3.21.2024

wemoveyou



Total Passengers Feb-24					
	Passengers		% Diff.	YOY %	
	2022	2023		2024	Diff.
JAN	296,641	344,268	16.1%	346,845	0.7%
FEB	310,738	327,934	5.5%	354,252	8.0%
MAR	368,946	380,363	3.1%		
<b>1st QTR</b>	<b>976,325</b>	<b>1,052,565</b>	<b>7.8%</b>		
APR	326,787	357,924	9.5%		
MAY	352,255	368,930	4.7%		
JUN	384,429	409,467	6.5%		
<b>2nd QTR</b>	<b>1,063,471</b>	<b>1,136,321</b>	<b>6.9%</b>	<b>0</b>	
JUL	407,867	442,942	8.6%		
AUG	409,942	438,621	7.0%		
SEP	397,404	408,732	2.9%		
<b>3rd QTR</b>	<b>1,215,213</b>	<b>1,290,295</b>	<b>6.2%</b>	<b>0</b>	
OCT	385,466	396,147	2.8%		
NOV	343,130	341,084	-0.6%		
DEC	327,353	356,972	9.0%		
<b>4th QTR</b>	<b>1,055,949</b>	<b>1,094,203</b>	<b>3.6%</b>	<b>0</b>	
<b>TOTAL</b>	<b>4,310,958</b>	<b>4,573,384</b>	<b>6.1%</b>		

Total Enplaned Passengers Feb-24				
Month	2022	2023	2024	% Diff.
JAN	147,773	171,374	172,968	0.9%
FEB	155,233	162,964	177,670	9.0%
MAR	185,671	193,748		
APR	163,973	177,665		
MAY	174,487	183,112		
JUN	191,234	203,452		
JUL	203,375	220,645		
AUG	199,365	214,616		
SEP	206,819	212,376		
OCT	193,074	197,692		
NOV	171,626	171,361		
DEC	162,680	176,035		
<b>TOTAL</b>	<b>2,155,310</b>	<b>2,285,040</b>		

Total Deplaned Passengers				
Month	2022	2023	2024	% Diff.
JAN	148,868	172,894	173,877	0.6%
FEB	155,505	164,970	176,582	7.0%
MAR	183,275	186,615		
APR	162,814	180,259		
MAY	177,768	185,818		
JUN	193,195	206,015		
JUL	204,492	222,297		
AUG	210,577	224,005		
SEP	190,585	196,356		
OCT	192,392	198,455		
NOV	171,504	169,723		
DEC	164,673	180,937		
<b>TOTAL</b>	<b>2,155,648</b>	<b>2,288,344</b>		

Total Cargo Volume in Pounds Feb-24						
	2022	2023	% Diff.	2024		YOY % Diff.
	Cargo in Pounds			Pounds	Metric Tons	
JAN	11,052,383	9,768,668	-11.6%	8,769,205	3,977	-10.2%
FEB	10,991,076	8,963,956	-18.4%	8,896,368	4,035	-0.8%
MAR	12,265,793	11,124,124	-9.3%			
<b>1st QTR</b>	<b>34,309,252</b>	<b>29,856,748</b>	<b>-13.0%</b>			
APR	11,470,613	8,704,717	-24.1%			
MAY	10,966,757	9,094,192	-17.1%			
JUN	12,105,721	9,694,997	-19.9%			
<b>2nd QTR</b>	<b>34,543,091</b>	<b>27,493,906</b>	<b>-20.4%</b>	<b>0</b>		
JUL	11,289,066	8,508,207	-24.6%			
AUG	11,751,228	9,888,463	-15.9%			
SEP	11,624,360	9,237,788	-20.5%			
<b>3rd QTR</b>	<b>34,664,654</b>	<b>27,634,458</b>	<b>-20.3%</b>	<b>0</b>		
OCT	10,502,407	8,731,063	-16.9%			
NOV	11,569,577	9,273,796	-19.8%			
DEC	13,806,179	11,347,689	-17.8%			
<b>4th QTR</b>	<b>35,878,163</b>	<b>29,352,548</b>	<b>-18.2%</b>	<b>0</b>		
<b>TOTAL</b>	<b>139,395,160</b>	<b>114,337,660</b>	<b>-18.0%</b>			

Enplaned Passengers & Load Factor				
Airline	Enplaned PAX	Feb-24	Feb-23	Diff.
Alaska/Horizon	9,972	90.6%	79.9%	10.7
Allegiant Air	0	n/a	63.3%	n/a
American	29,930	91.9%	88.7%	3.2
Delta	14,966	83.9%	84.6%	-0.7
Frontier	0	n/a	64.1%	n/a
JetBlue	4,734	73.1%	61.7%	11.3
New Pacific	702	48.5%	n/a	n/a
Southwest	78,056	76.2%	73.1%	3.2
Spirit	8,256	78.2%	77.2%	1.0
Sun Country	1,608	48.0%	48.9%	-0.9
United	26,918	87.7%	85.4%	2.3
Volaris	2,528	70.6%	73.2%	-2.6

wemoveyou

