



# Reno-Tahoe International Airport

## Passengers and Cargo Statistics Report

### December 2024





## RNO OVERVIEW

### December 2024 vs. December 2023

Total Passengers:	Up 12.2%
Avg. Enplaned Load Factor:	75.9%, up 3.0 pts.
Departures:	Up 9.0%
Departing Seats:	Up 6.5%
Cargo Volume:	Down 20.4%

## SUMMARY

Reno-Tahoe International Airport (RNO) served 400,626 passengers in December 2024, an increase of 12.2% versus the same period last year. In December 2024, RNO was served by 10 airlines to 21 non-stop destinations. The total seat capacity increased 6.5% and flights increased 9.0% when compared to December 2023.

RNO handled 9,030,713 pounds of air cargo in December 2024, a decrease of 20.4% when compared to December 2023.

Looking at the year as a whole, 2024 was a record year, with a total of 4.8 million passengers served—a 6% increase from the previous year—making it the busiest year since 2008. Seats were up by 9.0%, and flights increased by 8.4%.

RNO handled 102,382,081 pounds of air cargo in 2024, a decrease of 10.5% when compared to 2023.

wemoveyou





## 11 Airlines Connecting to 20+ Nonstop Destinations

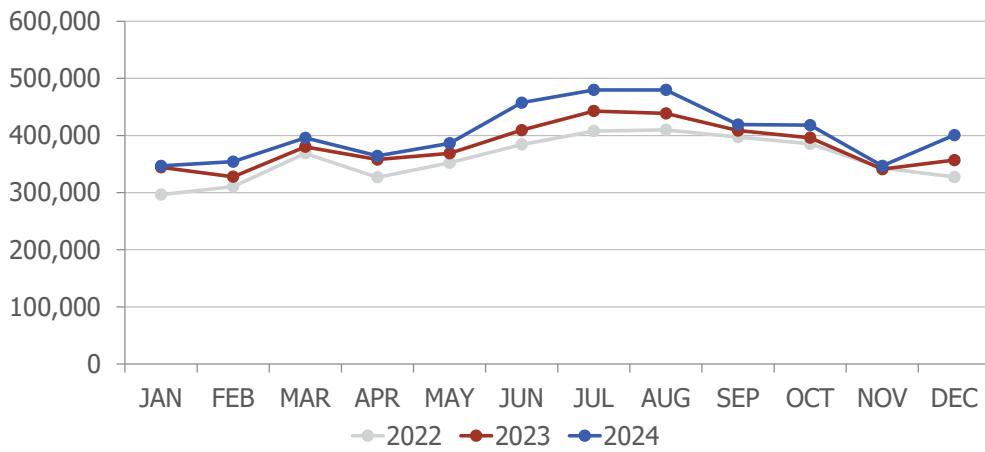
\*JetBlue & Sun Country Operate on a seasonal basis

\*Frontier begins in March

### Schedule Highlights

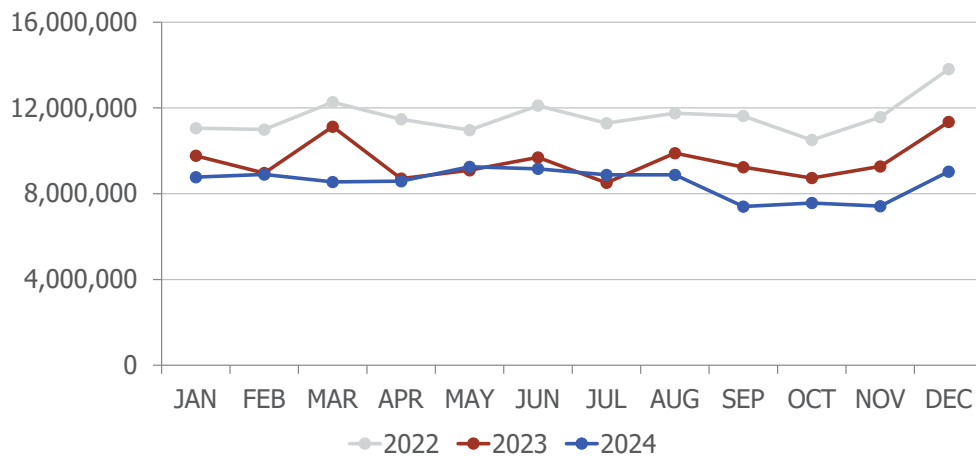
- Alaska Airlines began a daily seasonal non-stop flight between RNO and San Diego (SAN) on December 19.
- Southwest Airlines will begin non-stop seasonal flights between RNO and Austin (AUS) on March 6.
- Frontier Airlines will begin non-stop flights between RNO and Denver (DEN) on March 7.
- Frontier Airlines will begin non-stop flights between RNO and Las Vegas (LAS) on March 7.

## Passengers



Total Passengers			
	Dec-24	Dec-23	Difference
Alaska/Horizon	37,182	22,445	65.7%
American	53,880	50,973	5.7%
Delta	37,852	29,518	28.2%
JetBlue	2,865	8,696	-67.1%
New Pacific	0	564	
Southwest	164,700	158,011	4.2%
Spirit	26,056	16,967	53.6%
Sun Country	2,304	1,945	18.5%
United	69,466	60,171	15.4%
Volaris	6,321	5,905	7.0%

## Cargo

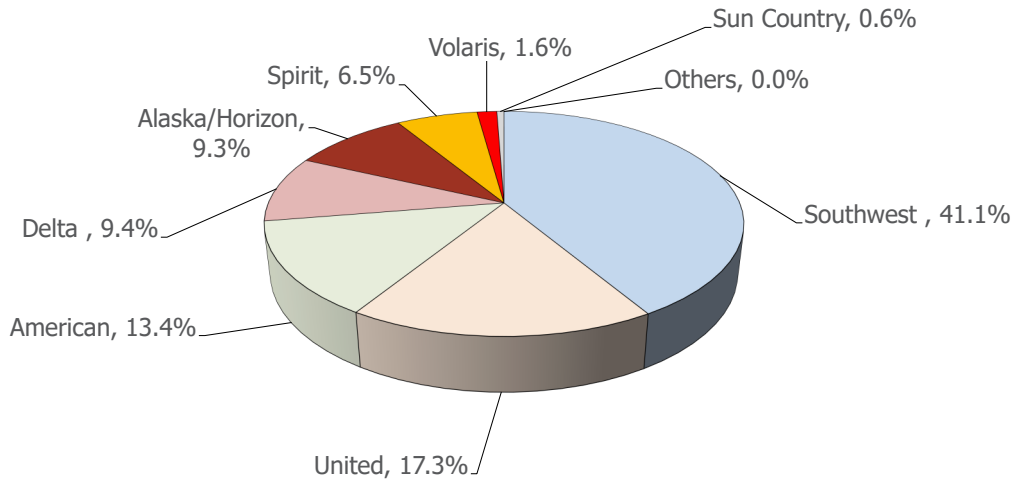


In December 2024, UPS cargo volume was up 11.2%, FedEx was down 40.1% and DHL saw decreases of 15.9% when compared to December 2023.

wemoveyou

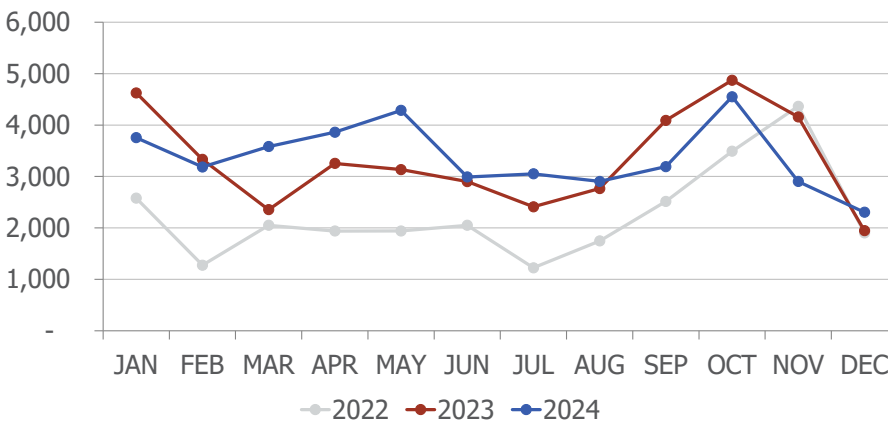


## AIRLINE MARKET SHARE (passengers)



Airline Market Share			
	Dec-24	Dec-23	YOY Change
Alaska/Horizon	9.3%	6.3%	3.0
Allegiant Air	n/a	0.5%	n/a
American	13.4%	14.3%	(0.8)
Delta	9.4%	8.3%	1.2
Frontier	n/a	n/a	n/a
JetBlue	0.7%	2.4%	(1.7)
Southwest	41.1%	44.3%	(3.2)
Spirit	6.5%	4.8%	1.8
Sun Country	0.6%	0.5%	0.0
United	17.3%	16.9%	0.5
Volaris	1.6%	1.7%	(0.1)
New Pacific	n/a	0.2%	n/a
Others	0.0%	0.0%	0.0

## TOTAL CHARTER PASSENGERS



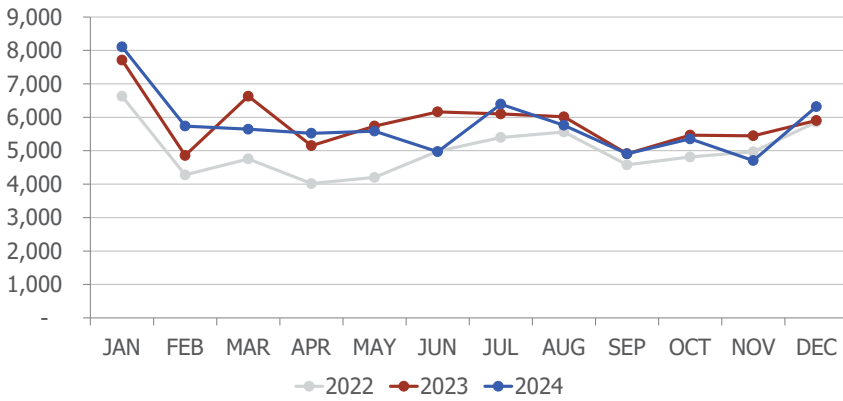
The airport served 2,304 passengers on charters, a increase of 18.5% when compared to December 2023. Sun Country Airlines was one airline offering charter flights at RNO during the month.

JSX public charter passenger count is not included in the figures above.

wemoveyou

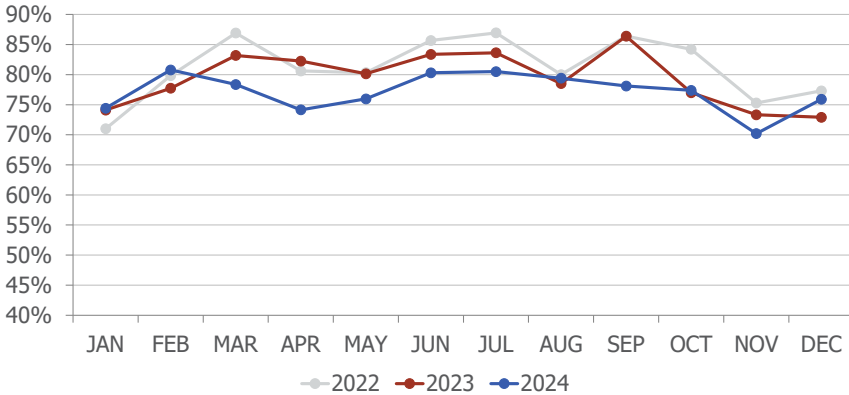


## TOTAL INTERNATIONAL PASSENGERS

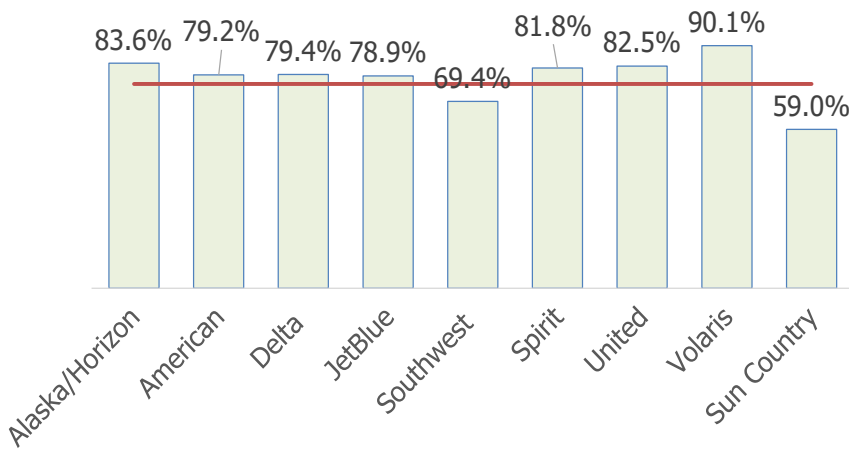


In December 2024, RNO served 6,321 international passengers, a increase of 7.0% when compared to December 2023.

## AVERAGE ENPLANED LOAD FACTOR



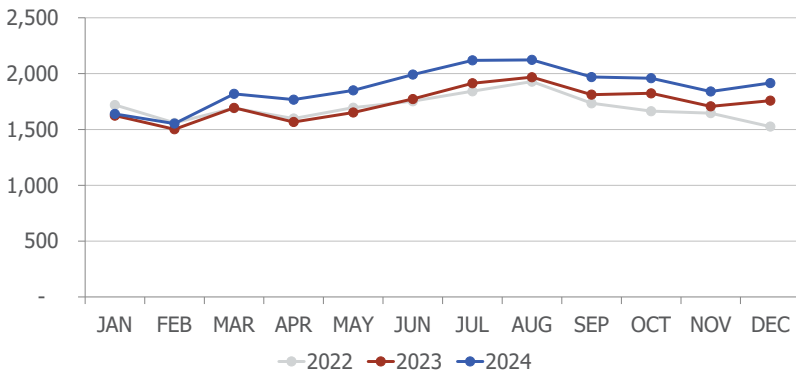
In December 2024, RNO's average enplaned load factor was 75.9%, which is up 3.0 points when compared to December 2023.



The red horizontal line on the left represents RNO's average enplaned load factor.

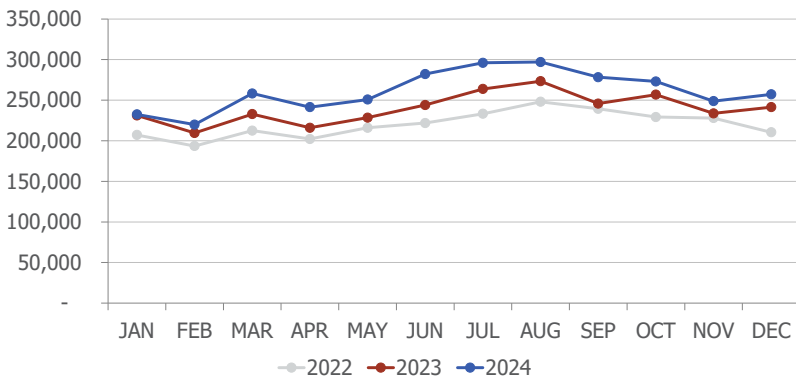
Sun Country's load factor reflects its charter operations only.

## DEPARTURES



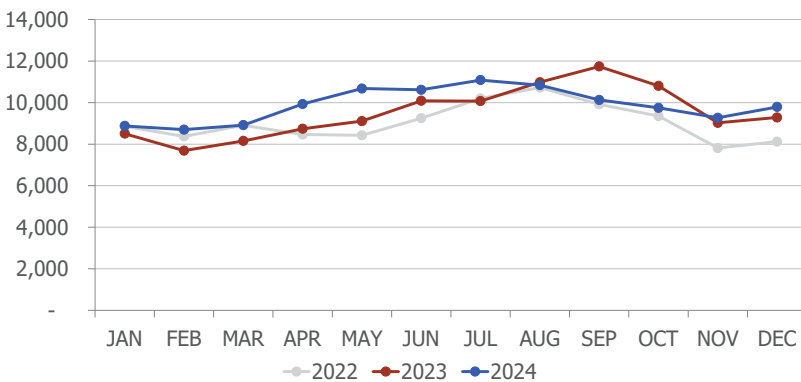
In December 2024, RNO handled 1,916 departures, an increase of 9.0% when compared to December 2023.

## DEPARTING SEATS



In December 2024, RNO offered 257,230 departing seats, an increase of 6.5% when compared to December 2023.

## TOTAL OPERATIONS



A total of 9,790 operations were handled at RNO in December 2024, a increase of 5.5% when compared to December 2023. Total operations include: Air Carrier, Air Taxi, General Aviation and Military operations as reported by the FAA.

Total Passengers Dec-24						
	Passengers		% Diff.	Passengers		YOY % Diff.
	2022	2023		2024		
JAN	296,641	344,268	16.1%	346,845	0.7%	
FEB	310,738	327,934	5.5%	354,252	8.0%	
MAR	368,946	380,363	3.1%	395,906	4.1%	
<b>1st QTR</b>	<b>976,325</b>	<b>1,052,565</b>	<b>7.8%</b>	<b>1,097,003</b>	<b>4.2%</b>	
APR	326,787	357,924	9.5%	364,374	1.8%	
MAY	352,255	368,930	4.7%	386,391	4.7%	
JUN	384,429	409,467	6.5%	457,524	11.7%	
<b>2nd QTR</b>	<b>1,063,471</b>	<b>1,136,321</b>	<b>6.9%</b>	<b>1,208,289</b>	<b>6.3%</b>	
JUL	407,867	442,942	8.6%	479,858	8.3%	
AUG	409,942	438,621	7.0%	479,829	9.4%	
SEP	397,404	408,732	2.9%	419,203	2.6%	
<b>3rd QTR</b>	<b>1,215,213</b>	<b>1,290,295</b>	<b>6.2%</b>	<b>1,378,890</b>	<b>6.9%</b>	
OCT	385,466	396,147	2.8%	418,241	5.6%	
NOV	343,130	341,084	-0.6%	346,927	1.7%	
DEC	327,353	356,972	9.0%	400,626	12.2%	
<b>4th QTR</b>	<b>1,055,949</b>	<b>1,094,203</b>	<b>3.6%</b>	<b>1,165,794</b>	<b>6.5%</b>	
<b>TOTAL</b>	<b>4,310,958</b>	<b>4,573,384</b>	<b>6.1%</b>	<b>4,849,976</b>	<b>6.0%</b>	

Total Enplaned Passengers Dec-24				
Month	2022	2023	2024	% Diff.
JAN	147,773	171,374	172,968	0.9%
FEB	155,233	162,964	177,670	9.0%
MAR	185,671	193,748	202,409	4.5%
APR	163,973	177,665	179,020	0.8%
MAY	174,487	183,112	190,496	4.0%
JUN	191,234	203,452	226,631	11.4%
JUL	203,375	220,645	238,290	8.0%
AUG	199,365	214,616	235,899	9.9%
SEP	206,819	212,376	217,408	2.4%
OCT	193,074	197,692	211,333	6.9%
NOV	171,626	171,361	174,680	1.9%
DEC	162,680	176,035	195,212	10.9%
<b>TOTAL</b>	<b>2,155,310</b>	<b>2,285,040</b>	<b>2,422,016</b>	<b>6.0%</b>

Total Deplaned Passengers				
Month	2022	2023	2024	% Diff.
JAN	148,868	172,894	173,877	0.6%
FEB	155,505	164,970	176,582	7.0%
MAR	183,275	186,615	193,497	3.7%
APR	162,814	180,259	185,354	2.8%
MAY	177,768	185,818	195,895	5.4%
JUN	193,195	206,015	230,893	12.1%
JUL	204,492	222,297	241,568	8.7%
AUG	210,577	224,005	243,930	8.9%
SEP	190,585	196,356	201,795	2.8%
OCT	192,392	198,455	206,908	4.3%
NOV	171,504	169,723	172,247	1.5%
DEC	164,673	180,937	205,414	13.5%
<b>TOTAL</b>	<b>2,155,648</b>	<b>2,288,344</b>	<b>2,427,960</b>	<b>6.1%</b>

Total Cargo Volume in Pounds Dec-24						
	2022		% Diff.	2024		YOY % Diff.
	Cargo in Pounds			Pounds	Metric Tons	
JAN	11,052,383	9,768,668	-11.6%	8,769,205	3,977	-10.2%
FEB	10,991,076	8,963,956	-18.4%	8,896,368	4,035	-0.8%
MAR	12,265,793	11,124,124	-9.3%	8,545,646	3,876	-23.2%
<b>1st QTR</b>	<b>34,309,252</b>	<b>29,856,748</b>	<b>-13.0%</b>	<b>26,211,219</b>	<b>11,887</b>	<b>-12.2%</b>
APR	11,470,613	8,704,717	-24.1%	8,581,674	3,892	-1.4%
MAY	10,966,757	9,094,192	-17.1%	9,253,876	4,197	1.8%
JUN	12,105,721	9,694,997	-19.9%	9,160,826	4,155	-5.5%
<b>2nd QTR</b>	<b>34,543,091</b>	<b>27,493,906</b>	<b>-20.4%</b>	<b>26,996,376</b>	<b>12,243</b>	<b>-1.8%</b>
JUL	11,289,066	8,508,207	-24.6%	8,878,130	4,026	4.3%
AUG	11,751,228	9,888,463	-15.9%	8,876,453	4,026	-10.2%
SEP	11,624,360	9,237,788	-20.5%	7,402,906	3,357	-19.9%
<b>3rd QTR</b>	<b>34,664,654</b>	<b>27,634,458</b>	<b>-20.3%</b>	<b>25,157,489</b>	<b>11,409</b>	<b>-9.0%</b>
OCT	10,502,407	8,731,063	-16.9%	7,565,778	3,431	-13.3%
NOV	11,569,577	9,273,796	-19.8%	7,420,506	3,365	-20.0%
DEC	13,806,179	11,347,689	-17.8%	9,030,713	4,096	-20.4%
<b>4th QTR</b>	<b>35,878,163</b>	<b>29,352,548</b>	<b>-18.2%</b>	<b>24,016,997</b>	<b>10,892</b>	<b>-18.2%</b>
<b>TOTAL</b>	<b>139,395,160</b>	<b>114,337,660</b>	<b>-18.0%</b>	<b>102,382,081</b>	<b>46,432</b>	<b>-10.5%</b>

Enplaned Passengers & Load Factor				
Airline	Enplaned PAX	Dec-24	Dec-23	Diff.
Alaska/Horizon	18,036	83.6%	81.3%	2.3
Allegiant Air	0	n/a	72.3%	n/a
American	25,840	79.2%	84.2%	-5.0
Delta	18,576	79.4%	81.8%	-2.5
JetBlue	1,325	78.9%	60.8%	18.1
New Pacific	0	n/a	24.9%	n/a
Southwest	79,865	69.4%	65.1%	4.2
Spirit	12,746	81.8%	83.6%	-1.8
Sun Country	1,208	59.0%	71.6%	-12.6
United	33,928	82.5%	80.3%	2.2
Volaris	3,688	90.1%	92.1%	-2.0

wemoveyou

