



Reno-Tahoe International Airport

Passengers and Cargo Statistics Report

March 2025



RNO OVERVIEW

March 2025 vs. March 2024

Total Passengers:	Up 6.2%
Avg. Enplaned Load Factor:	80.7%, up 2.4 pts.
Departures:	Up 7.6%
Departing Seats:	Up 1.6%
Cargo Volume:	Down 20.3%

SUMMARY

Reno-Tahoe International Airport (RNO) served 420,534 passengers in March 2025, an increase of 6.2% versus the same period last year. In March 2025, RNO was served by 11 airlines to 22 non-stop destinations. The total seat capacity increased 1.6% and flights increased 7.6% when compared to March 2024.

RNO handled 6,808,411 pounds of air cargo in March 2025, a decrease of 20.3% when compared to March 2024.



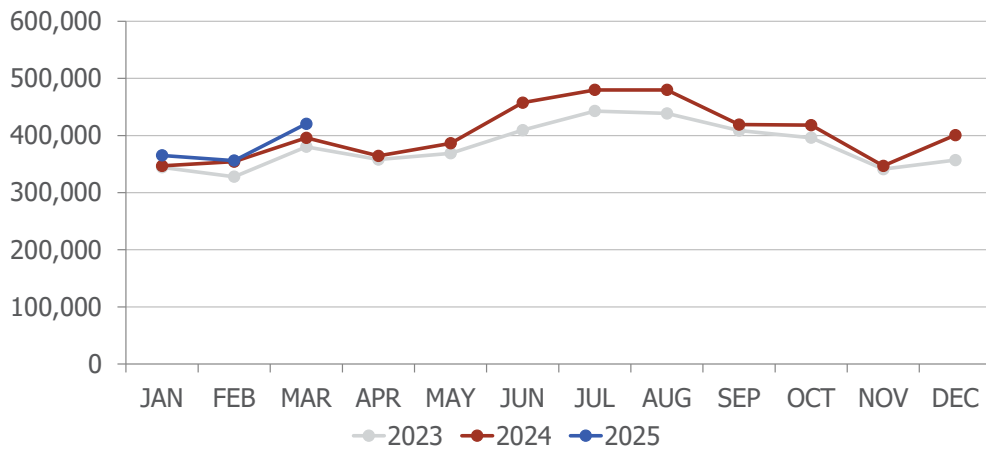
wemoveyou



Schedule Highlights

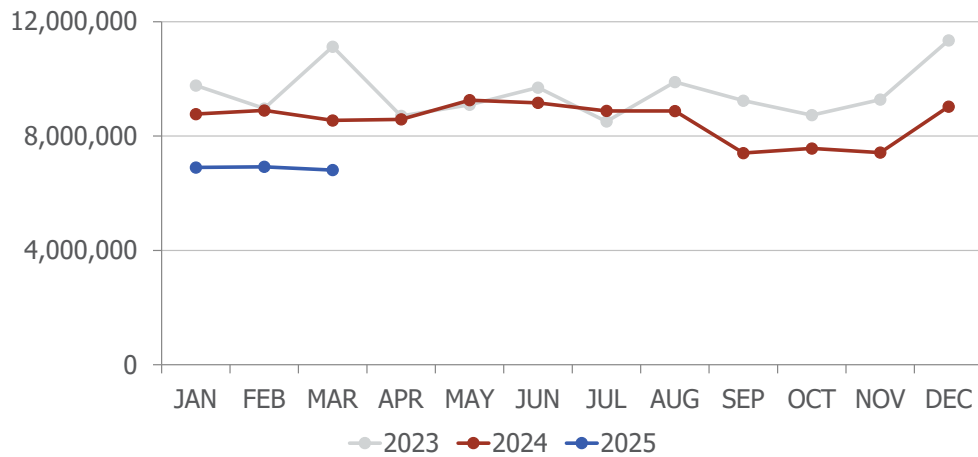
- Southwest Airlines began non-stop seasonal flights between RNO and Austin (AUS) on March 6.
- Frontier Airlines began non-stop flights between RNO and Denver (DEN) on March 7.
- Frontier Airlines began non-stop flights between RNO and Las Vegas (LAS) on March 7.
- JSX Airlines announced that it will begin non-stop seasonal flights between RNO and Carlsbad (CLD) and RNO to Las Vegas (LAS) June 19. Both these flights will operate four times a week.

Passengers

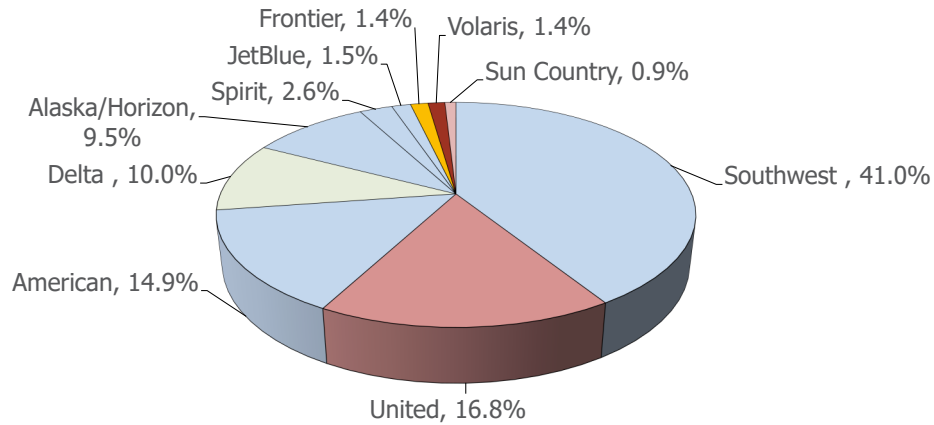


Total Passengers			
	Mar-25	Mar-24	Difference
Alaska/Horizon	39,927	24,426	63.5%
American	62,523	61,394	1.8%
Delta	41,916	32,267	29.9%
Frontier	5,954	0	
JetBlue	6,430	14,112	-54.4%
New Pacific	0	863	
Southwest	172,526	163,634	5.4%
Spirit	11,134	22,590	-50.7%
Sun Country	3,772	4,036	-6.5%
United	70,659	66,940	5.6%
Volaris	5,693	5,644	0.9%

Cargo

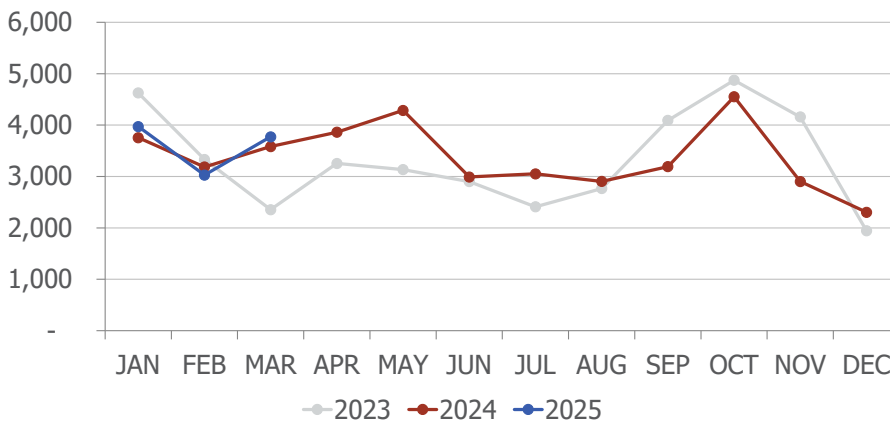


AIRLINE MARKET SHARE (passengers)



Airline Market Share			
	Mar-25	Mar-24	YOY Change
Alaska/Horizon	9.5%	6.2%	3.3
American	14.9%	15.5%	(0.6)
Delta	10.0%	8.2%	1.8
Frontier	1.4%	n/a	n/a
JetBlue	1.5%	3.6%	(2.0)
Southwest	41.0%	41.3%	(0.3)
Spirit	2.6%	5.7%	(3.1)
Sun Country	0.9%	1.0%	(0.1)
United	16.8%	16.9%	(0.1)
Volaris	1.4%	1.4%	(0.1)
Others	0.0%	0.0%	0.0

TOTAL CHARTER PASSENGERS



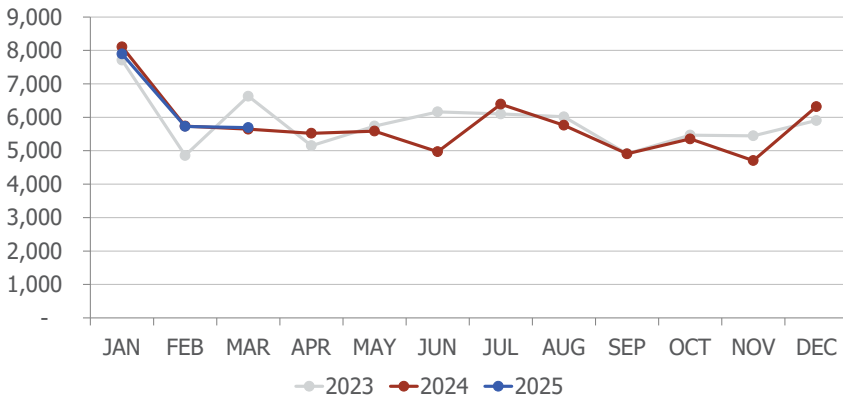
The airport served 3,771 passengers on charters, a increase of 5.3% when compared to March 2024. Sun Country Airlines was one of the airlines offering charter flights at RNO during the month.

JSX public charter passenger count is not included in the figures above.

wemoveyou

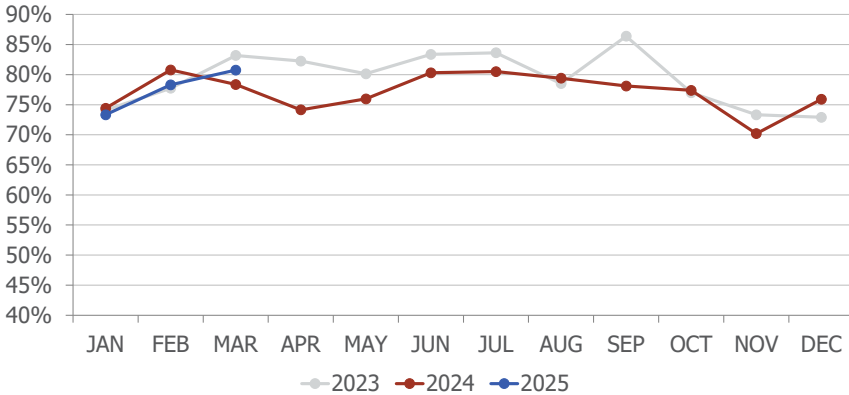


TOTAL INTERNATIONAL PASSENGERS

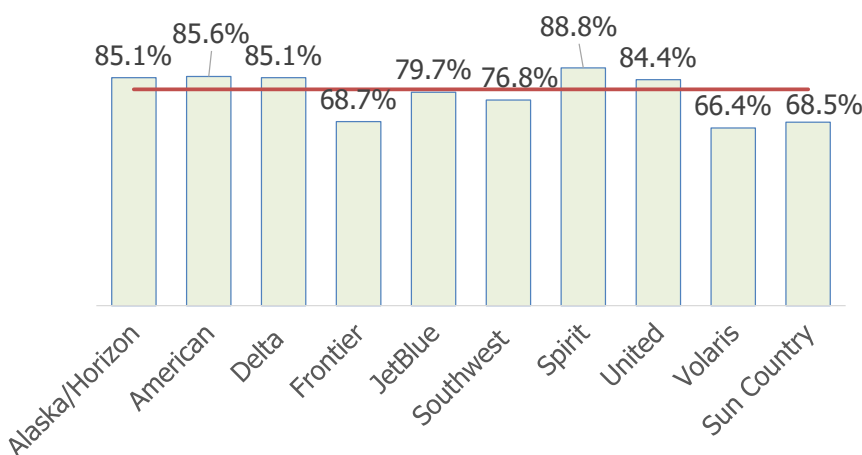


In March 2025, RNO served 5,693 international passengers, a increase of 0.9% when compared to March 2024.

AVERAGE ENPLANED LOAD FACTOR



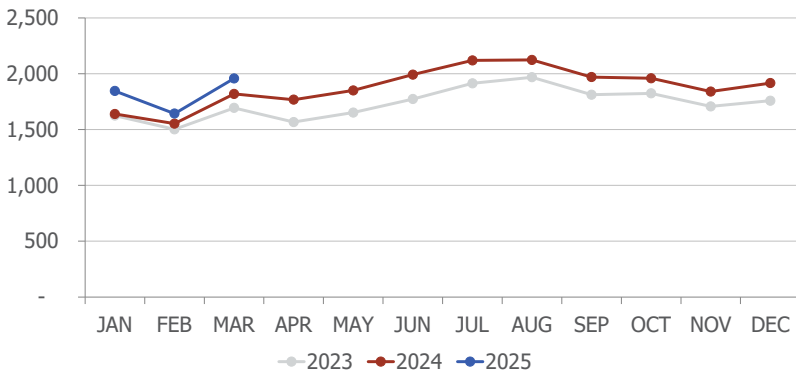
In March 2025, RNO's average enplaned load factor was 80.7%, which is up 2.4 points when compared to March 2024.



The red horizontal line on the left represents RNO's average enplaned load factor.

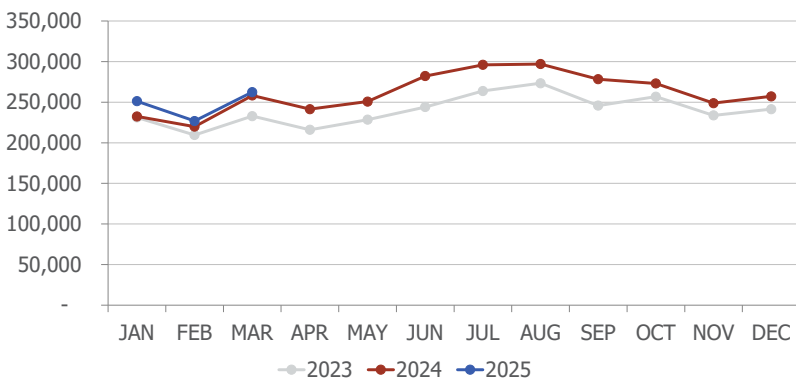
Sun Country's load factor reflects its charter operations only.

DEPARTURES



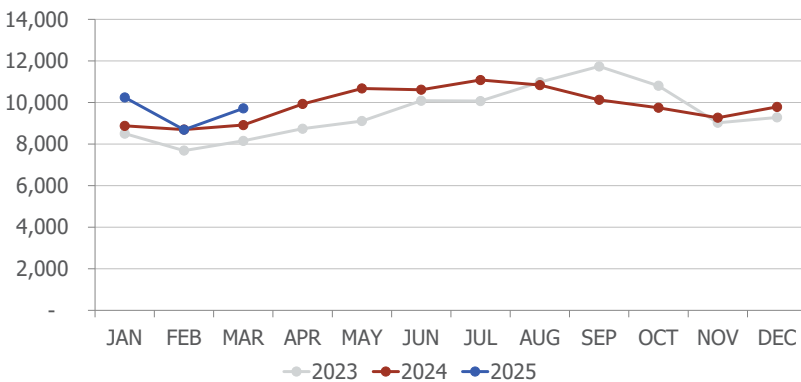
In March 2025, RNO handled 1,958 departures, an increase of 7.6% when compared to March 2024.

DEPARTING SEATS



In March 2025, RNO offered 262,467 departing seats, an increase of 1.6% when compared to March 2024.

TOTAL OPERATIONS



A total of 9,720 operations were handled at RNO in March 2025, a increase of 9.0% when compared to March 2024. Total operations include: Air Carrier, Air Taxi, General Aviation and Military operations as reported by the FAA.

Total Passengers					
Mar-25					
	Passengers		% Diff.	Passengers	
	2023	2024		2025	YOY % Diff.
JAN	344,268	346,845	0.7%	365,265	5.3%
FEB	327,934	354,252	8.0%	356,037	0.5%
MAR	380,363	395,906	4.1%	420,534	6.2%
1st QTR	1,052,565	1,097,003	4.2%	1,141,836	4.1%
APR	357,924	364,374	1.8%		
MAY	368,930	386,391	4.7%		
JUN	409,467	457,524	11.7%		
2nd QTR	1,136,321	1,208,289	6.3%		
JUL	442,942	479,858	8.3%		
AUG	438,621	479,829	9.4%		
SEP	408,732	419,203	2.6%		
3rd QTR	1,290,295	1,378,890	6.9%		
OCT	396,147	418,241	5.6%		
NOV	341,084	346,927	1.7%		
DEC	356,972	400,626	12.2%		
4th QTR	1,094,203	1,165,794	6.5%		
TOTAL	4,573,384	4,849,977	6.0%		

Total Enplaned Passengers				
Mar-25				
Month	2023	2024	2025	% Diff.
JAN	171,374	172,968	184,251	6.5%
FEB	162,964	177,670	177,521	-0.1%
MAR	193,748	202,409	211,941	4.7%
APR	177,665	179,020		
MAY	183,112	190,496		
JUN	203,452	226,631		
JUL	220,645	238,290		
AUG	214,616	235,899		
SEP	212,376	217,408		
OCT	197,692	211,333		
NOV	171,361	174,680		
DEC	176,035	195,212		
TOTAL	2,285,040	2,422,016		

Total Deplaned Passengers				
Month	2023	2024	2025	% Diff.
JAN	172,894	173,877	181,014	4.1%
FEB	164,970	176,582	178,516	1.1%
MAR	186,615	193,497	208,593	7.8%
APR	180,259	185,354		
MAY	185,818	195,895		
JUN	206,015	230,893		
JUL	222,297	241,568		
AUG	224,005	243,930		
SEP	196,356	201,795		
OCT	198,455	206,908		
NOV	169,723	172,247		
DEC	180,937	205,414		
TOTAL	2,288,344	2,427,960		

Total Cargo Volume in Pounds						
Mar-25						
	2023		% Diff.	2025		YOY % Diff.
	Cargo in Pounds			Pounds	Metric Tons	
JAN	9,768,668	8,769,205	-10.2%	6,901,224	3,130	-21.3%
FEB	8,963,956	8,896,368	-0.8%	6,922,536	3,139	-22.2%
MAR	11,124,124	8,545,646	-23.2%	6,808,411	3,088	-20.3%
1st QTR	29,856,748	26,211,219	-12.2%	20,632,171	9,357	-21.3%
APR	8,704,717	8,581,674	-1.4%			
MAY	9,094,192	9,253,876	1.8%			
JUN	9,694,997	9,160,826	-5.5%			
2nd QTR	27,493,906	26,996,376	-1.8%			
JUL	8,508,207	8,878,130	4.3%			
AUG	9,888,463	8,876,453	-10.2%			
SEP	9,237,788	7,402,906	-19.9%			
3rd QTR	27,634,458	25,157,489	-9.0%			
OCT	8,731,063	7,565,778	-13.3%			
NOV	9,273,796	7,420,506	-20.0%			
DEC	11,347,689	9,030,713	-20.4%			
4th QTR	29,352,548	24,016,997	-18.2%			
TOTAL	114,337,660	102,382,081	-10.5%			

Enplaned Passengers & Load Factor				
Airline	Enplaned PAX	Mar-25	Mar-24	Diff.
Alaska/Horizon	20,200	85.1%	86.1%	-1.0
American	32,057	85.6%	87.3%	-1.7
Delta	21,174	85.1%	87.4%	-2.3
Frontier	2,958	68.7%	n/a	n/a
JetBlue	3,140	79.7%	68.8%	10.8
Southwest	86,854	76.8%	72.4%	4.4
Spirit	5,564	88.8%	77.8%	11.0
Sun Country	1,911	68.5%	60.2%	8.2
United	35,491	84.4%	85.1%	-0.8
Volaris	2,592	66.4%	77.8%	-11.5

wemoveyou

