



Reno-Tahoe  
Airport  
Authority

# Reno-Tahoe International Airport

## Passengers and Cargo Statistics Report

### June 2025



## RNO OVERVIEW

### June 2025 vs. June 2024

Total Passengers:	Down 1.0%
Avg. Enplaned Load Factor:	79.1%, down 1.2 pts.
Departures:	Up 3.9%
Departing Seats:	Up 1.8%
Cargo Volume:	Down 30.3%

## SUMMARY

Reno-Tahoe International Airport (RNO) served 453,113 passengers in June 2025, a decrease of 1.0% versus the same period last year. In June 2025, RNO was served by 11 airlines to 25 non-stop destinations. The total seat capacity increased 1.8% and flights increased 3.9% when compared to June 2024.

RNO handled 6,387,181 pounds of air cargo in June 2025, a decrease of 30.3% when compared to June 2024.



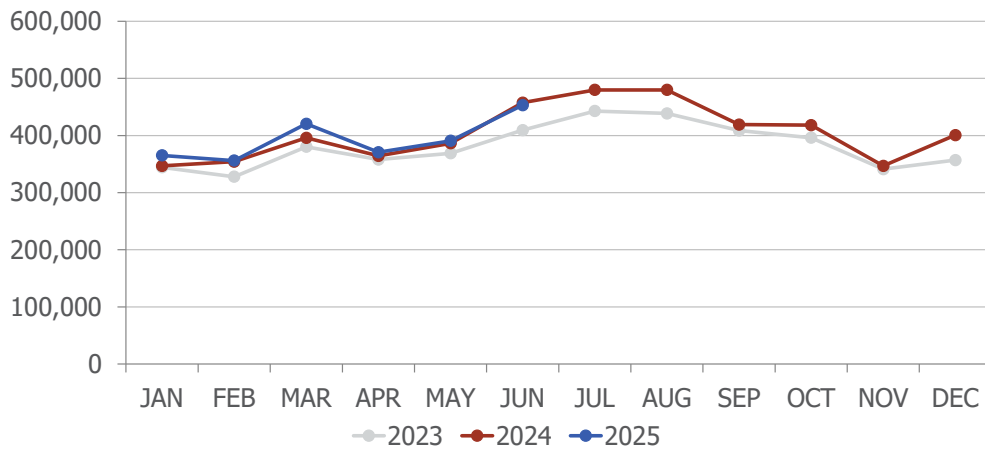
wemoveyou



## Schedule Highlights

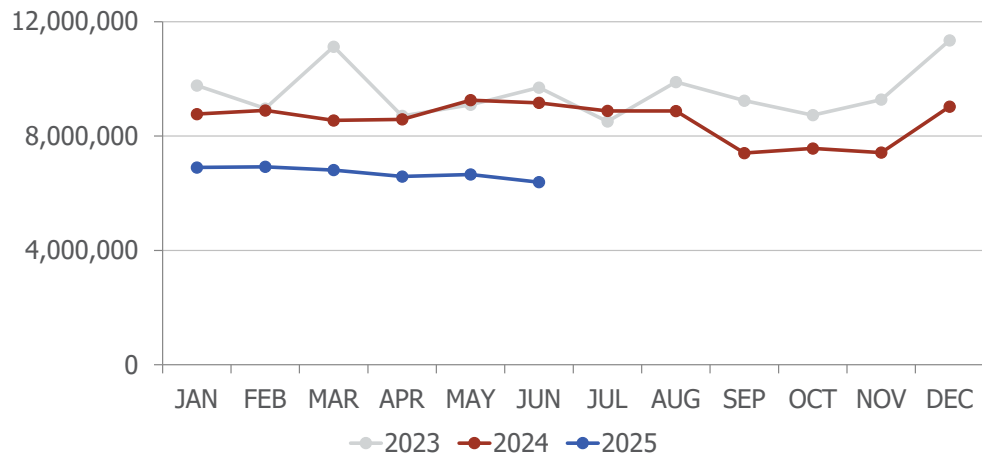
- JSX Airlines announced that it will begin non-stop seasonal flights between RNO and Carlsbad (CLD) and RNO to Las Vegas (LAS) June 19. Both these flights will operate four times a week.
- Alaska Airlines announced that it will upgrade its non-stop once daily seasonal service from RNO to San Diego (SAN) to a year-round beginning October 4, 2025. This flight will be upgraded again to a double daily service beginning November 1, 2025.
- JetBlue seasonal non-stop service from RNO to New York City (JFK) returned June 12 and continues through September 2.
- Delta Air Lines seasonal non-stop service to Minneapolis (MSP) returned June 9 and continues through September 8.
- Southwest seasonal non-stop service from RNO to Dallas-Love (DAL) returned June 7 and continues through September 28.
- Southwest seasonal non-stop service from RNO to Chicago-Midway (MDW) returned June 5 and continues through September 29.

## Passengers



Total Passengers			
	Jun-25	Jun-24	Difference
Alaska/Horizon	50,099	37,911	32.1%
American	66,869	75,782	-11.8%
Delta	48,971	46,659	5.0%
Frontier	6,270	0	
JetBlue	3,893	5,459	-28.7%
Southwest	173,783	184,890	-6.0%
Spirit	14,090	25,872	-45.5%
Sun Country	7,456	7,409	0.6%
United	76,777	68,570	12.0%
Volaris	4,905	4,972	-1.3%

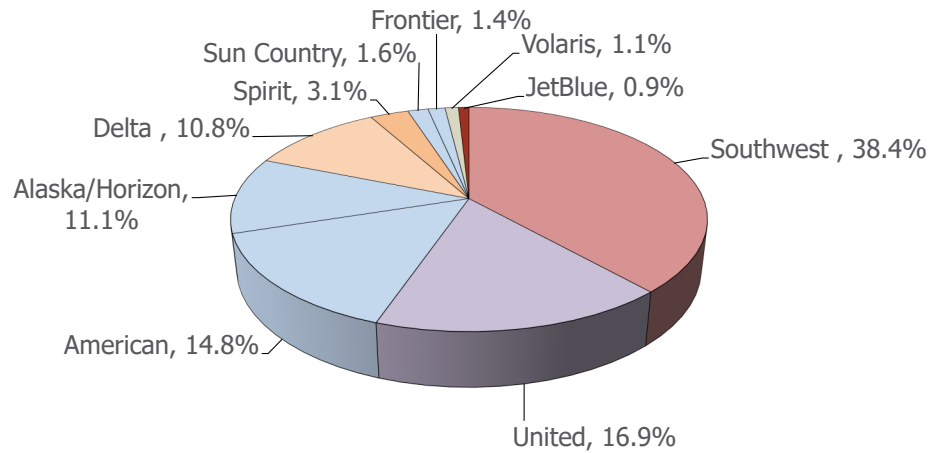
## Cargo



wemoveyou

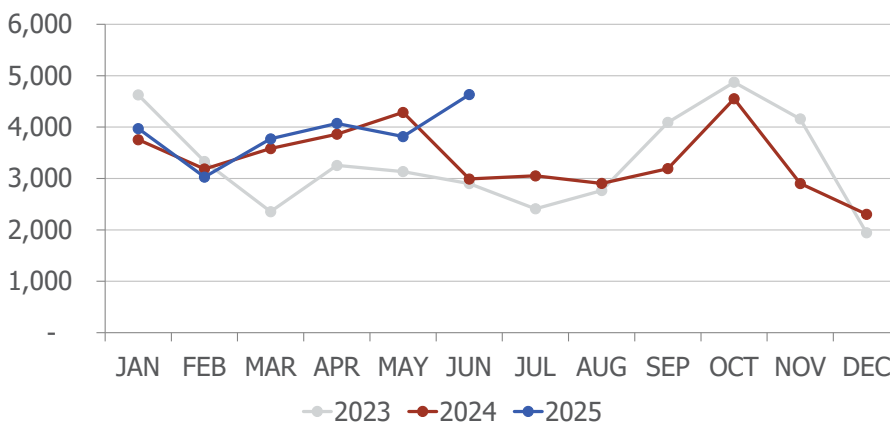


## AIRLINE MARKET SHARE (passengers)



Airline Market Share			
	Jun-25	Jun-24	YOY Change
Alaska/Horizon	11.1%	8.3%	2.8
American	14.8%	16.6%	(1.8)
Delta	10.8%	10.2%	0.6
Frontier	1.4%	n/a	n/a
JetBlue	0.9%	1.2%	(0.3)
Southwest	38.4%	40.4%	(2.1)
Spirit	3.1%	5.7%	(2.5)
Sun Country	1.6%	1.6%	0.0
United	16.9%	15.0%	2.0
Volaris	1.1%	1.1%	(0.0)
Others	0.0%	0.0%	0.0

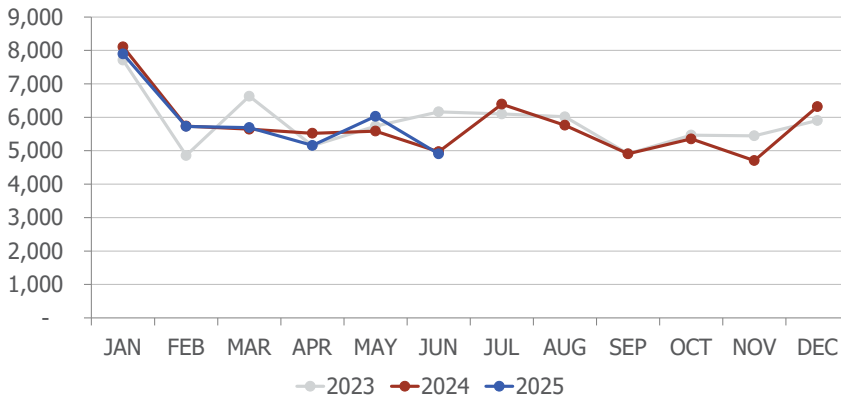
## TOTAL CHARTER PASSENGERS



The airport served 4,633 passengers on charters, a increase of 54.9% when compared to June 2024. Sun Country Airlines was one of the airlines offering charter flights at RNO during the month.

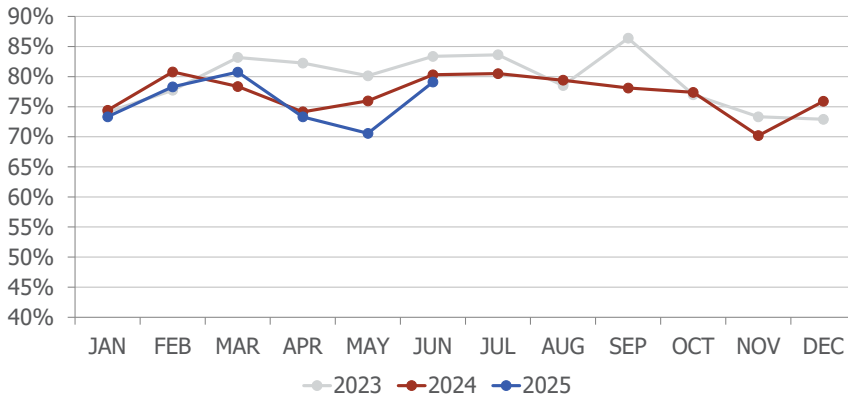
JSX public charter passenger count is not included in the figures above.

## TOTAL INTERNATIONAL PASSENGERS

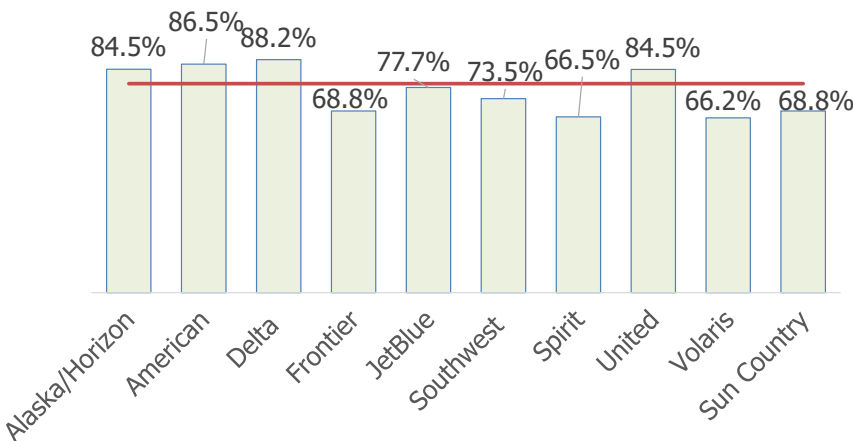


In June 2025, RNO served 4,905 international passengers, a decrease of 1.3% when compared to June 2024.

## AVERAGE ENPLANED LOAD FACTOR



In June 2025, RNO's average enplaned load factor was 79.1%, which is down 1.2 points when compared to June 2024.



The red horizontal line on the left represents RNO's average enplaned load factor.

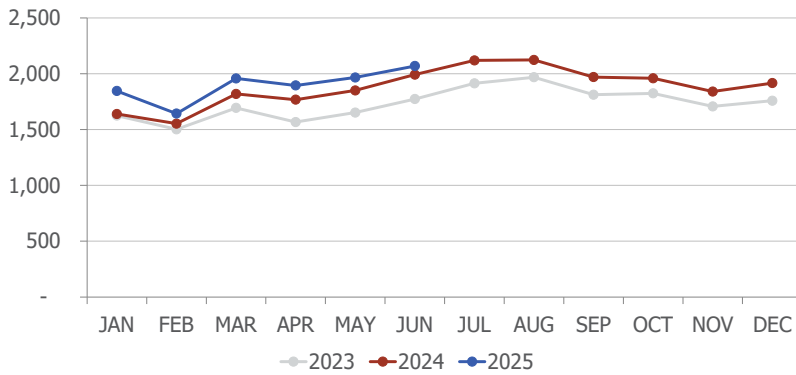
Sun Country's load factor includes its charter operations.

Doesn't include JSX Charters.

wemoveyou

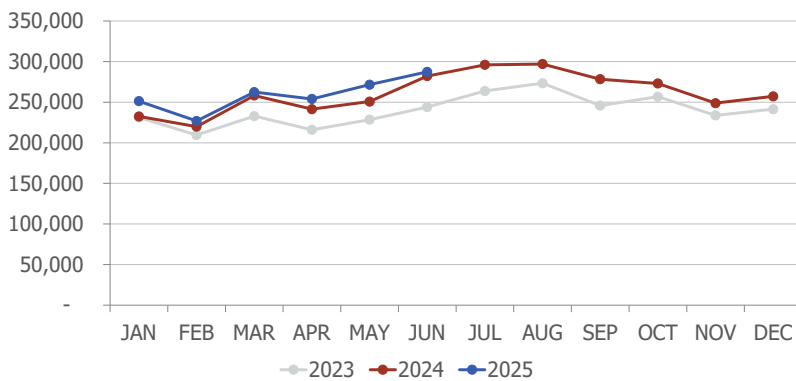


## DEPARTURES



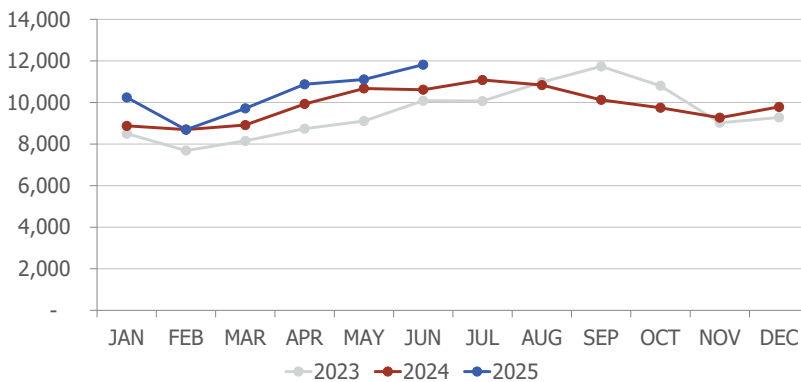
In June 2025, RNO handled 2,069 departures, an increase of 3.9% when compared to June 2024.

## DEPARTING SEATS



In June 2025, RNO offered 287,402 departing seats, an increase of 1.8% when compared to June 2024.

## TOTAL OPERATIONS



A total of 11,823 operations were handled at RNO in June 2025, a increase of 11.4% when compared to June 2024. Total operations include: Air Carrier, Air Taxi, General Aviation and Military operations as reported by the FAA.

wemoveyou



Total Passengers					
Jun-25					
	Passengers		% Diff.	Passengers	
	2023	2024		2025	YOY % Diff.
JAN	344,268	346,845	0.7%	365,265	5.3%
FEB	327,934	354,252	8.0%	356,037	0.5%
MAR	380,363	395,906	4.1%	420,534	6.2%
<b>1st QTR</b>	<b>1,052,565</b>	<b>1,097,003</b>	<b>4.2%</b>	<b>1,141,836</b>	<b>4.1%</b>
APR	357,924	364,374	1.8%	370,758	1.8%
MAY	368,930	386,391	4.7%	390,729	1.1%
JUN	409,467	457,524	11.7%	453,113	-1.0%
<b>2nd QTR</b>	<b>1,136,321</b>	<b>1,208,289</b>	<b>6.3%</b>	<b>1,214,600</b>	<b>0.5%</b>
JUL	442,942	479,858	8.3%		
AUG	438,621	479,829	9.4%		
SEP	408,732	419,203	2.6%		
<b>3rd QTR</b>	<b>1,290,295</b>	<b>1,378,890</b>	<b>6.9%</b>		
OCT	396,147	418,241	5.6%		
NOV	341,084	346,927	1.7%		
DEC	356,972	400,626	12.2%		
<b>4th QTR</b>	<b>1,094,203</b>	<b>1,165,794</b>	<b>6.5%</b>		
<b>TOTAL</b>	<b>4,573,384</b>	<b>4,849,977</b>	<b>6.0%</b>		

Total Enplaned Passengers				
Jun-25				
Month	2023	2024	2025	% Diff.
JAN	171,374	172,968	184,251	6.5%
FEB	162,964	177,670	177,521	-0.1%
MAR	193,748	202,409	211,941	4.7%
APR	177,665	179,020	186,218	4.0%
MAY	183,112	190,496	191,724	0.6%
JUN	203,452	226,631	227,328	0.3%
JUL	220,645	238,290		
AUG	214,616	235,899		
SEP	212,376	217,408		
OCT	197,692	211,333		
NOV	171,361	174,680		
DEC	176,035	195,212		
<b>TOTAL</b>	<b>2,285,040</b>	<b>2,422,016</b>		

Total Deplaned Passengers				
Month	2023	2024	2025	% Diff.
JAN	172,894	173,877	181,014	4.1%
FEB	164,970	176,582	178,516	1.1%
MAR	186,615	193,497	208,593	7.8%
APR	180,259	185,354	184,540	-0.4%
MAY	185,818	195,895	199,005	1.6%
JUN	206,015	230,893	225,785	-2.2%
JUL	222,297	241,568		
AUG	224,005	243,930		
SEP	196,356	201,795		
OCT	198,455	206,908		
NOV	169,723	172,247		
DEC	180,937	205,414		
<b>TOTAL</b>	<b>2,288,344</b>	<b>2,427,960</b>		

Total Cargo Volume in Pounds						
Jun-25						
	2023	2024	% Diff.	2025		YOY %
	Cargo in Pounds			Pounds	Metric Tons	Diff.
JAN	9,768,668	8,769,205	-10.2%	6,901,224	3,130	-21.3%
FEB	8,963,956	8,896,368	-0.8%	6,922,536	3,139	-22.2%
MAR	11,124,124	8,545,646	-23.2%	6,808,411	3,088	-20.3%
1st QTR	29,856,748	26,211,219	-12.2%	20,632,171	9,357	-21.3%
APR	8,704,717	8,581,674	-1.4%	6,584,600	2,986	-23.3%
MAY	9,094,192	9,253,876	1.8%	6,654,959	3,018	-28.1%
JUN	9,694,997	9,160,826	-5.5%	6,387,181	2,897	-30.3%
2nd QTR	27,493,906	26,996,376	-1.8%	19,626,740	8,901	-27.3%
JUL	8,508,207	8,878,130	4.3%			
AUG	9,888,463	8,876,453	-10.2%			
SEP	9,237,788	7,402,906	-19.9%			
3rd QTR	27,634,458	25,157,489	-9.0%			
OCT	8,731,063	7,565,778	-13.3%			
NOV	9,273,796	7,420,506	-20.0%			
DEC	11,347,689	9,030,713	-20.4%			
4th QTR	29,352,548	24,016,997	-18.2%			
TOTAL	114,337,660	102,382,081	-10.5%			

Enplaned Passengers & Load Factor				
Airline	Enplaned PAX	Jun-25	Jun-24	Diff.
Alaska/Horizon	25,182	84.5%	81.2%	3.3
American	33,828	86.5%	86.7%	-0.2
Delta	24,733	88.2%	90.9%	-2.8
Frontier	3,145	68.8%	n/a	n/a
JetBlue	1,863	77.7%	51.8%	25.8
Southwest	86,762	73.5%	75.7%	-2.2
Spirit	6,907	66.5%	79.5%	-13.0
Sun Country	3,709	68.8%	72.2%	-3.4
United	38,614	84.5%	85.4%	-0.9
Volaris	2,585	66.2%	72.7%	-6.6

wemoveyou

