



Reno-Tahoe International Airport

Passengers and Cargo Statistics Report

December 2025

RNO OVERVIEW

December 2025 vs. December 2024

Total Passengers:	Down 3.7%
Avg. Enplaned Load Factor:	74.3%, down 1.6 pts.
Departures:	Down 1.3%
Departing Seats:	Down 0.8%
Cargo Volume:	Down 16.5%

SUMMARY

Reno-Tahoe International Airport (RNO) served 385,607 passengers in December 2025, a decrease of 3.7% versus the same period last year. In December 2025, RNO was served by 10 airlines to 22 non-stop destinations. The total seat capacity was down 0.8% and flights decreased 1.3% when compared to December 2024.

RNO handled 7,544,354 pounds of air cargo in December 2025, a decrease of 16.5% when compared to December 2024.



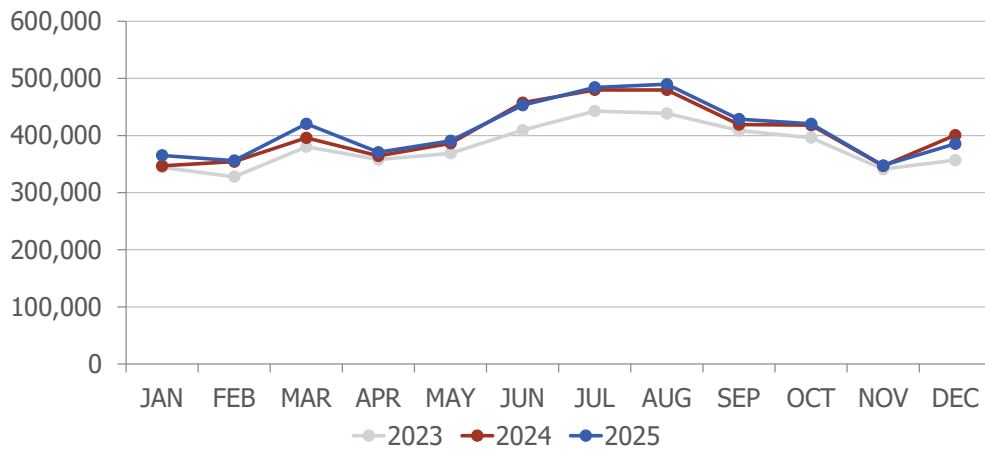
wemoveyou

**RENO
TAHOE**
Reno-Tahoe
International
Airport

Schedule Highlights

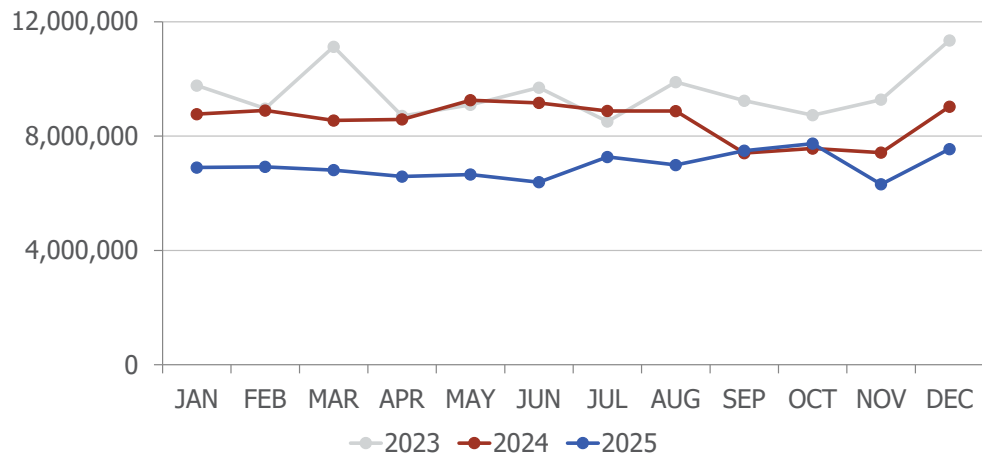
- Southwest Airlines seasonal non-stop service to Dallas-Love (DAL) returns November 22 and continues through January 4.
- JetBlue Airlines seasonal non-stop service to New York City (JFK) returns December 18 and continues through January 5.
- United Airlines seasonal non-stop service to Houston (IAH) returns December 18 and continues through January 5. This flight will operate daily.
- JetBlue Airlines announced a seasonal non-stop service to Fort Lauderdale (FLL), this flight will only operate on March 14, 21, and 28.

Passengers



Total Passengers			
	Dec-25	Dec-24	Difference
Alaska/Horizon	43,514	37,182	17.0%
American	53,610	53,880	-0.5%
Delta	37,545	37,852	-0.8%
Frontier	6,144	0	
JetBlue	2,881	2,865	0.6%
Southwest	151,195	164,700	-8.2%
Spirit	11,658	26,056	-55.3%
Sun Country	1,788	2,304	-22.4%
United	69,695	69,466	0.3%
Volaris	7,577	6,321	19.9%

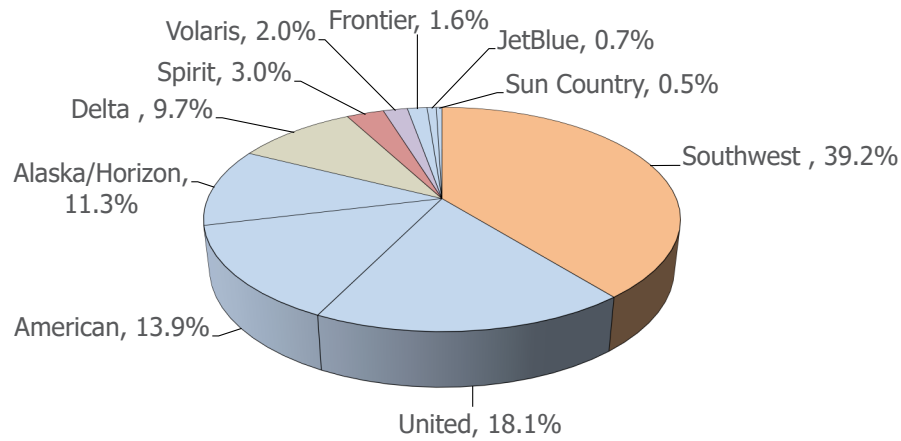
Cargo



wemoveyou

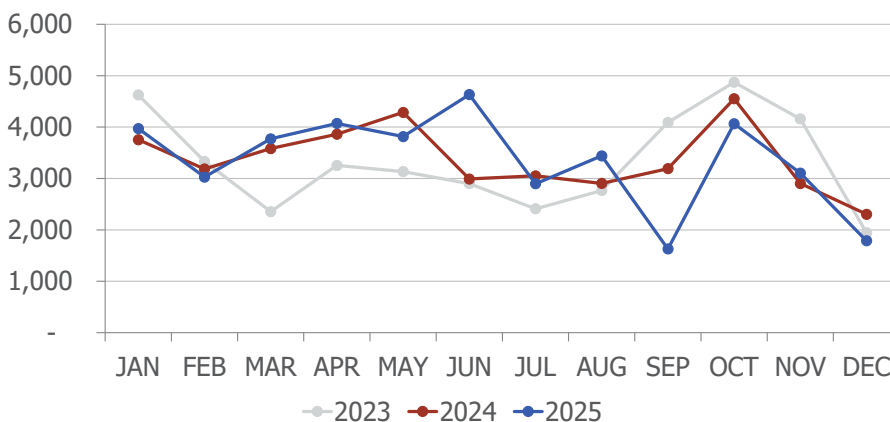


AIRLINE MARKET SHARE (passengers)



Airline Market Share			
	Dec-25	Dec-24	YOY Change
Alaska/Horizon	11.3%	9.3%	2.0
American	13.9%	13.4%	0.5
Delta	9.7%	9.4%	0.3
Frontier	1.6%	n/a	n/a
JetBlue	0.7%	0.7%	0.0
Southwest	39.2%	41.1%	(1.9)
Spirit	3.0%	6.5%	(3.5)
Sun Country	0.5%	0.6%	(0.1)
United	18.1%	17.3%	0.7
Volaris	2.0%	1.6%	0.4
Others	0.0%	0.0%	0.0

TOTAL CHARTER PASSENGERS



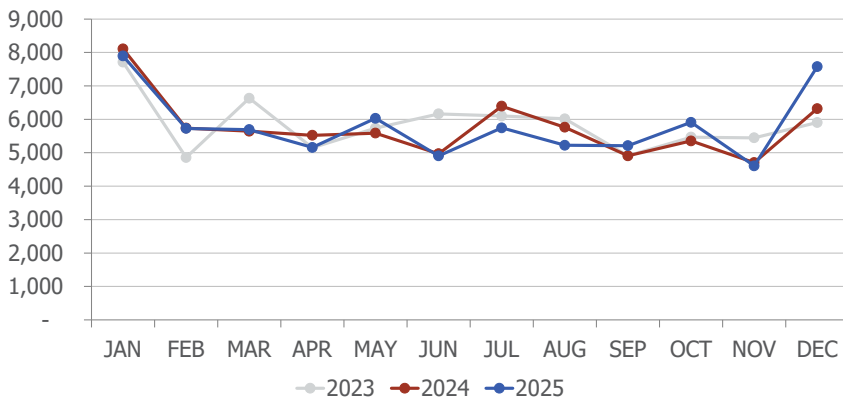
The airport served 1,788 passengers on charters, a decrease of 22.4% when compared to December 2024. Sun Country Airlines was one of the airlines offering charter flights at RNO during the month.

JSX public charter passenger count is not included in the figures above.

wemoveyou

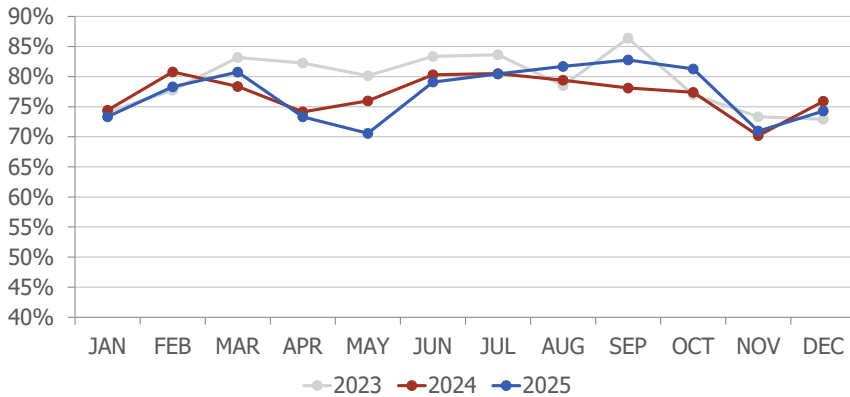


TOTAL INTERNATIONAL PASSENGERS

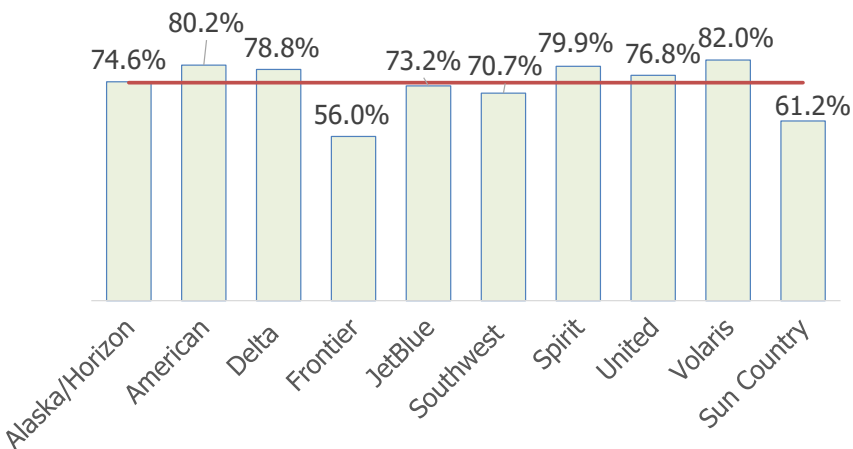


In December 2025, RNO served 7,577 international passengers, a increase of 19.9% when compared to December 2024.

AVERAGE ENPLANED LOAD FACTOR



In December 2025, RNO's average enplaned load factor was 74.3%, which is down 1.6 points when compared to December 2024.



The red horizontal line on the left represents RNO's average enplaned load factor.

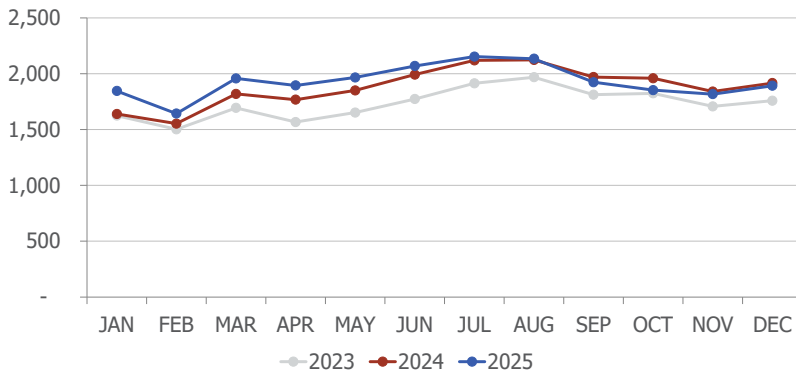
Sun Country's load factor includes its charter operations.

Doesn't include JSX Charters.

wemoveyou

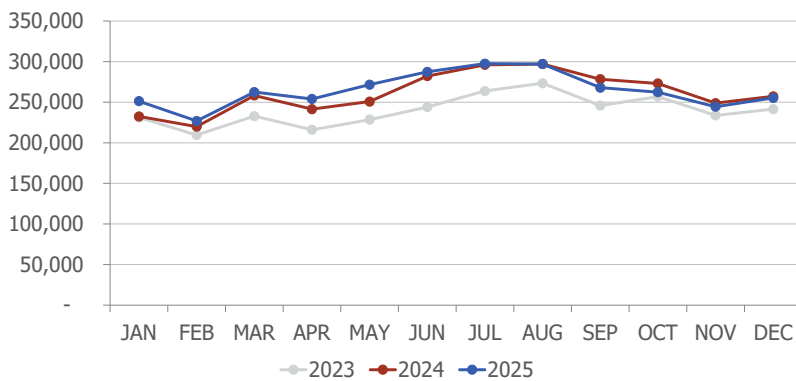


DEPARTURES



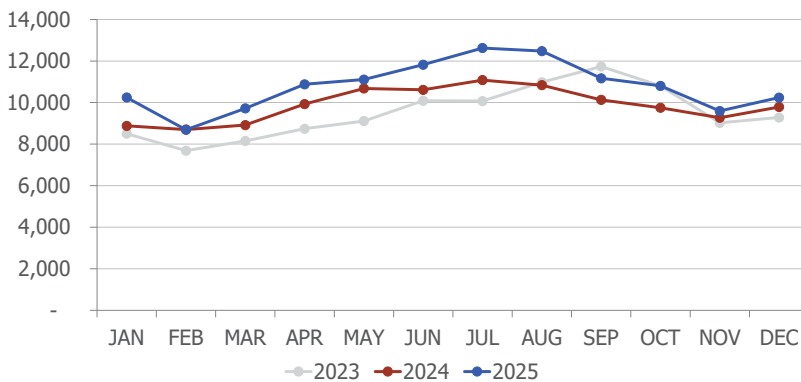
In December 2025, RNO handled 1,892 departures, a decrease of 1.3% when compared to December 2024.

DEPARTING SEATS



In December 2025, RNO offered 255,264 departing seats, a decrease of 0.8% when compared to December 2024.

TOTAL OPERATIONS



A total of 10,241 operations were handled at RNO in December 2025, a increase of 4.6% when compared to December 2024. Total operations include: Air Carrier, Air Taxi, General Aviation and Military operations as reported by the FAA.

wemoveyou



Total Passengers Dec-25					
	Passengers		% Diff.	Passengers	
	2023	2024		2025	YOY % Diff.
JAN	344,268	346,845	0.7%	365,265	5.3%
FEB	327,934	354,252	8.0%	356,037	0.5%
MAR	380,363	395,906	4.1%	420,534	6.2%
1st QTR	1,052,565	1,097,003	4.2%	1,141,836	4.1%
APR	357,924	364,374	1.8%	370,758	1.8%
MAY	368,930	386,391	4.7%	390,729	1.1%
JUN	409,467	457,524	11.7%	453,113	-1.0%
2nd QTR	1,136,321	1,208,289	6.3%	1,214,600	0.5%
JUL	442,942	479,858	8.3%	484,244	0.9%
AUG	438,621	479,829	9.4%	489,751	2.1%
SEP	408,732	419,203	2.6%	428,712	2.3%
3rd QTR	1,290,295	1,378,890	6.9%	1,402,707	1.7%
OCT	396,147	418,241	5.6%	420,541	0.5%
NOV	341,084	346,927	1.7%	347,609	0.2%
DEC	356,972	400,626	12.2%	385,607	-3.7%
4th QTR	1,094,203	1,165,794	6.5%	1,153,757	-1.0%
TOTAL	4,573,384	4,849,977	6.0%	4,912,900	1.3%

Total Cargo Volume in Pounds Dec-25						
	2023	2024	% Diff.	2025		YOY %
	Cargo in Pounds			Pounds	Metric Tons	Diff.
JAN	9,768,668	8,769,205	-10.2%	6,901,224	3,130	-21.3%
FEB	8,963,956	8,896,368	-0.8%	6,922,536	3,139	-22.2%
MAR	11,124,124	8,545,646	-23.2%	6,808,411	3,088	-20.3%
1st QTR	29,856,748	26,211,219	-12.2%	20,632,171	9,357	-21.3%
APR	8,704,717	8,581,674	-1.4%	6,584,600	2,986	-23.3%
MAY	9,094,192	9,253,876	1.8%	6,654,959	3,018	-28.1%
JUN	9,694,997	9,160,826	-5.5%	6,387,181	2,897	-30.3%
2nd QTR	27,493,906	26,996,376	-1.8%	19,626,740	8,901	-27.3%
JUL	8,508,207	8,878,130	4.3%	7,270,009	3,297	-18.1%
AUG	9,888,463	8,876,453	-10.2%	6,988,551	3,169	-21.3%
SEP	9,237,788	7,402,906	-19.9%	7,488,397	3,396	1.2%
3rd QTR	27,634,458	25,157,489	-9.0%	21,746,957	9,863	-13.6%
OCT	8,731,063	7,565,778	-13.3%	7,738,183	3,509	2.3%
NOV	9,273,796	7,420,506	-20.0%	6,314,147	2,864	-14.9%
DEC	11,347,689	9,030,713	-20.4%	7,544,354	3,421	-16.5%
4th QTR	29,352,548	24,016,997	-18.2%	21,596,684	9,794	-10.1%
TOTAL	114,337,660	102,382,081	-10.5%	83,602,552	37,915	-18.3%

Total Enplaned Passengers Dec-25				
Month	2023	2024	2025	% Diff.
JAN	171,374	172,968	184,251	6.5%
FEB	162,964	177,670	177,521	-0.1%
MAR	193,748	202,409	211,941	4.7%
APR	177,665	179,020	186,218	4.0%
MAY	183,112	190,496	191,724	0.6%
JUN	203,452	226,631	227,328	0.3%
JUL	220,645	238,290	239,345	0.4%
AUG	214,616	235,899	242,656	2.9%
SEP	212,376	217,408	221,785	2.0%
OCT	197,692	211,333	213,243	0.9%
NOV	171,361	174,680	173,399	-0.7%
DEC	176,035	195,212	189,619	-2.9%
TOTAL	2,285,040	2,422,016	2,459,030	1.5%

Total Deplaned Passengers				
Month	2023	2024	2025	% Diff.
JAN	172,894	173,877	181,014	4.1%
FEB	164,970	176,582	178,516	1.1%
MAR	186,615	193,497	208,593	7.8%
APR	180,259	185,354	184,540	-0.4%
MAY	185,818	195,895	199,005	1.6%
JUN	206,015	230,893	225,785	-2.2%
JUL	222,297	241,568	244,899	1.4%
AUG	224,005	243,930	247,095	1.3%
SEP	196,356	201,795	206,927	2.5%
OCT	198,455	206,908	207,298	0.2%
NOV	169,723	172,247	174,210	1.1%
DEC	180,937	205,414	195,988	-4.6%
TOTAL	2,288,344	2,427,960	2,453,870	1.1%

Enplaned Passengers & Load Factor				
Airline	Enplaned PAX	Dec-25	Dec-24	Diff.
Alaska/Horizon	21,443	74.6%	83.6%	-9.0
American	26,499	80.2%	79.2%	1.0
Delta	18,555	78.8%	79.4%	-0.6
Frontier	3,153	56.0%	n/a	n/a
JetBlue	1,332	73.2%	78.9%	-5.7
Southwest	73,722	70.7%	69.4%	1.3
Spirit	5,818	79.9%	81.8%	-1.9
Sun Country	1,025	61.2%	59.0%	2.2
United	33,649	76.8%	82.5%	-5.8
Volaris	4,423	82.0%	90.1%	-8.1

wemoveyou

